

ROTORUA

OFFICIAL VISITOR GUIDE

2020





KIA ORA

WELCOME TO ROTORUA

Rotorua is a great place to enrich the soul. There's a plethora of attractions and experiences on offer for everyone from adventure seekers to those just looking to chill out. Make sure you check out our world class mountain bike trails, 18 lakes, geothermal wonders and experience Maori culture. Rotorua is one of New Zealand's most diverse, exciting and accessible holiday destinations, just a three hour drive from Auckland or a short flight from Wellington and Christchurch.

Inside this guide you'll get a feel for why we want to share Rotorua with you. We look forward to seeing you soon.

We're always happy to hear from you:



RotoruaNZ



+64 (07) 348 5179



DestinationRotorua



RotoruaNZ.com



CONTENTS

2 What's On: Events Calendar

4 Explore Rotorua's Lakes

6 Relax & Unwind

8 Our Forests

10 Find Your Element in Rotorua

15 Sustainable Tourism Charter

16 Stay

26 To Do

72 Eat & Drink

80 Travel Kit

82 Maps

WHAT'S ON

EVENTS CALENDAR Nov 2019 - Sep 2020

25 Oct - 3 Nov ➤ **Rotorua Bike Festival**

Now in its 7th year, the Rotorua Bike Festival delights both bikers and non-bikers alike. Enjoy this ten day festival celebrating all things with two wheels.

1-9 Nov ➤ **Grease - The Musical**

The world's best loved musical is coming to Rotorua! With its phenomenal score bursting with hits, this musical classic is brought to life by the Rotorua Musical Theatre!

2 Nov, 7 Dec & 22 Jan ➤ **Giant Gravity Enduro**

Cruise up, race down! This is the country's biggest gravity Enduro series with three races over summer.

14 Dec ➤ **Suffer Half Ironman**

This classic Half Ironman is a must do! Swim, run and ride in this event which will push you to your limits whilst offering unforgettable sights.

31 Dec ➤ **Glo Festival**

A fun and festive way to bring in the New Year.

3 Jan ➤ **Katchafire and The Black Seeds**

NZ reggae royalty will headline this concert along with NZ legends The Black Seeds, on the Rotorua Lakefront.

1-14 Feb ➤ **Rotorua Fringe Festival**

An eclectic range of performances as part of Rotorua's very own Fringe Festival.

8 Feb ➤ **Tarawera Ultra Marathon**

The 12th edition of New Zealand's most prestigious trail running event traverses forests, waterfalls and includes seven lakes and the most stunning scenery imaginable.

29 Feb ➤ **Rotorua Lakeside**

Gather the family, blankets and picnics, and head to the Village Green where you can join in on an evening of entertainment, culture and celebrations on the 24th year of Lakeside Rotorua.

1 Mar ➤ **Rotorua Off Road Half Marathon**

Join us in the Whakarewarewa Forest with distances ranging from a half marathon, quarter marathon, 5km and the little devil's race, there is something for all.

2–8 Mar ➤ **Crankworx**

The world's largest mountain bike festival comes back to Rotorua bringing together the best riders from around the world. These guys and gals do things on two wheels that need to be seen to be believed!

14–15 Mar ➤ **Rotorua Walking Festival**

The ultimate walking festival to suit everybody. From old to young, experienced to newbies – this festival is sure to please and showcase Rotorua's stunning surroundings.

21–22 Mar ➤ **Generation Homes Legends of the Lake**

With distances ranging from 5km ultra, through to a 100m race for the kids, there is a distance to suit all!

4 Apr ➤ **Radix Nutrition Xterra**

The Radix Xterra festival is the biggest multisport event in New Zealand. Enjoy the eight events on offer set in and around Rotorua's beautiful Lake Tikitapu (Blue Lake) and the Whakarewarewa Forest.

2 May ➤ **56th Rotorua Marathon**

The Rotorua Marathon is NZ's most iconic marathon event with the course going around Lake Rotorua. Great for spectators and competitors alike.

Jun/Jul ➤ **Matariki Festival**

When Matariki reappears in our dawn skies around June or July each year, it heralds the start of Te Tau Hou Māori – the Māori New Year.

Sep ➤ **Aronui Indigenous Arts Festival**

The month-long festival celebrates indigenous art and highlights the world-class artists we have in our community.

Sep ➤ **Lendlenser Run Beneath the Stars**

Get your headlamps ready and enjoy an evening under the stars in the famous Whakarewarewa Forest. Run or walk your way around a 5km, 10km or 21km course on a mixture of single track and forestry roads.

Weekly ➤ **Rotorua Night Market**

Every Thursday night from 5pm to 9pm (weather permitting).

Weekly ➤ **Rotorua Farmers Market**

Every Sunday morning 9am to midday (weather permitting).

EXPLORE ROTORUA'S LAKES

Welcome to the North Island Lakes District. The 18 sparkling lakes and three major rivers dotted around Rotorua makes the area a water lover's paradise. Take it all in while relaxing in a lake edge thermal hot pool or explore the lakes at length, discovering glow worm caves and fresh water springs by kayak or stand up paddle board.

Here are a few suggestions on some of the best lakes to visit for a dip:

LAKE TIKITAPU

Also known as the Blue Lake, Tikitapu is one of the most popular places in Rotorua for water sports. Whether you are keen to get out on the water, or want to swim or bathe in it, Tikitapu is the perfect choice. With crystal clear water and family friendly places for a picnic, catch some rays at the Blue Lake this year.



LAKE ROTOITI

Lake Rotoiti offers plenty of safe places to take the kids for some time in the water. Dropping off gradually in depth, the less confident swimmers will have a blast playing in the shallows. Between the lake and the playground at the end of Tamatea Sreett, the young ones will be entertained for hours.





LAKE OKAREKA

A little less frequented than some other lakes in the region, Lake Okareka is another great place to get in the water. Renowned for its natural beauty, this lake is beloved by locals. Head to Boyes Beach where you and friends or family can set up for the day. With barbeques and picnic tables, it's the perfect spot to enjoy the summer and early autumn sun.



LAKE TARAWERA

Lake Tarawera offers it all; history, natural beauty and a perfect spot for swimming and water sports. It's even one of the best places in the country for astro-photography. Catch the water taxi out to Hot Water Beach - a special lakeside location where spring water trickles down a small stream and into the lake.

RELAX AND UNWIND

Rotorua's geothermal water is known as "Waiariki"- translated to "water of the gods". The soothing water, mineral rich muds, traditional massage and indigenous herbs all play a special role in Rotorua's spa culture. From a simple soak, through to a full day luxury experience, there is something for all in Rotorua.

Here are a few suggestions for thermal bathing in the region:

POLYNESIAN SPA

This iconic complex offers hot mineral bathing with four different areas to choose from and a menu of soothing massage and spa treatments. Rejuvenate your body, mind and soul at Polynesian Spa.



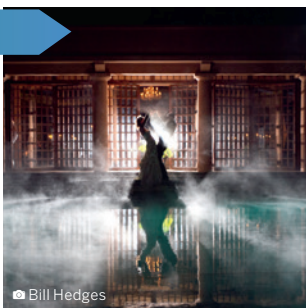
WAIKITE VALLEY



Visit Waikite Valley Thermal Pools to experience the 'Living Waters' of the Te Manaroa Spring - the largest single source of boiling water in NZ. The water cascades into the main settlers pool, the toddlers beach, the sit 'n' soak pool and the luxurious garden and pergola pools.

BLUE BATHS

"Mixed bathing in liquid light." Such was the promise of pleasure used to entice visitors to Rotorua's Blue Baths in the 1930's, the first venue to daringly offer mixed bathing in New Zealand. The Juvenile Pool sits at 30°C whilst the two hot soak pools vary between 37°C and 42°C.



© Bill Hedges



QE HEALTH

Bathing in hot mineral water for health benefits and pleasure has been practiced for centuries. The alkaline and sulphurous water at QE Health is sourced from the Rachel Spring and is renowned for its softening effects on the skin and its relaxing properties.



HELL'S GATE

Check out NZ's most active geothermal attraction, with the biggest mud volcano in the country and the largest hot waterfall in the Southern Hemisphere. Enjoy a guided tour before soaking in a mud or sulphur spa under the sun or stars. The kids will love painting themselves with mud.

HOT WATER BEACH

A special lakeside location where spring water trickles down a small stream and into the lake. At this extraordinary hot spot you can create a hot sandy hole to soak in or build a rock wall to create a private steamy spa.



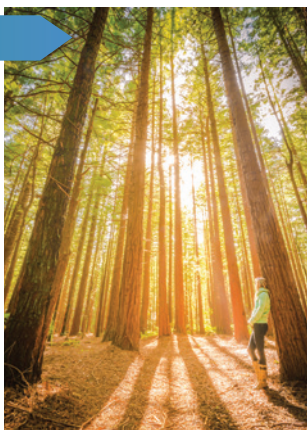
OUR FORESTS

The Redwoods, Whakarewarewa Forest, is a breathtaking place framed by magnificent stands of towering native and exotic trees – close, yet a world away from Rotorua’s inner city. The Dansey native Forest is lesser-known but equally as impressive with some great experiences on offer

There is an array of trails, tracks and nifty nooks to explore.

WALKING THE TRAILS

Take a stroll through the grove of towering Californian Redwoods or wander along one of the many signposted walks that cater for all ages and abilities. Magnificent panoramic views await those prepared to head uphill.



MOUNTAIN BIKING

Amateurs to experts from around the globe agree mountain biking doesn't get any better, with free access to an ever growing number of scenic, evolving trails covering 150km+. Exploring the forest by bike is sure to leave you grinning and anyone can find a trail to suit their ability. If you're a bit unsure on how to get started there are a number of mountain bike guides who will point you in the right direction.





REDWOODS TREEWALK

No trip to The Redwoods is complete with experiencing The Redwoods Treetwalk either by day or by night – two completely different experiences! Suspended high above the forest floor, encounter 75-metre-tall redwoods as you walk across eco-suspended bridges and platforms intricately designed to honour and accentuate the stunning natural environment.



DANSEY NATIVE FOREST

Where adrenaline and conservation collide! If you are looking for an eco-friendly experience that provides birds eye views of the forest and regenerates the bird life then Rotorua Canopy Tours is for you. On the less adventurous side is Rail Cruising which are self-drive rail cars that provide beautiful views of the land and lake Rotorua.




Find your element... in Rotorua



In Rotorua, connecting to the natural world is second nature. It's a place where the four elements - earth, air, fire and water - come together in a powerful way, to create unique experiences full of wonder and excitement.

Explore more, seek new adventures and find your element in our natural world.

Where billions of fires
light the earth 



Inspired by niho taniwha (teeth of the taniwha), the earth element represents myths and legends of the Māori people. The tapatoru (triangles) symbolise strength and resilience, and mirror the shape of our mountains and forests.

**Discover the road less travelled on our
world-class mountain bike trails.**

ROTORUA

Find your element



An aerial photograph of a dense green forest canopy. A wooden walkway with safety ropes runs diagonally across the frame. Four people wearing helmets and safety gear are walking on the path. A large, semi-transparent green koru symbol is overlaid on the forest, centered around the walkway. The symbol has four distinct loops, each containing a different type of foliage. The text "Where earth and air" is written in white, with a small koru icon replacing the word "air". Below it, the word "create" is written in white, followed by "your playground" in white.

Where earth and air create your playground

The four koru represent ngā hau e whā (the four winds), which were thought to be controlled by tohunga (priests) to help their tribe. This symbol is representative of bringing people together.

Immerse yourself in nature's wonder by taking an eco-adventure through an ancient New Zealand forest.

Where **fire**  and water
awaken your senses




The kaokao pattern reflects the burning passion of Māori warriors – arms strong, standing united – as they perform the haka, a fierce display of pride and strength.

**Seek out the secrets of our land and observe
New Zealand's largest geyser in action.**

ROTORUA

Find your element



A woman in a black bikini is floating on her back in a clear, shallow hot pool. Above her, a vibrant rainbow is visible in the water, creating a circular pattern of light and color. The pool is surrounded by dark rocks and some green foliage on the right side. The overall scene is peaceful and serene.

Where fire and water warm your soul

Called the 'life giver of all things', the water element represents water giving energy to the koru as it unfurls. The three ripples relate to the lakes, rivers and geothermal waters, which each have their own mauri (life force).

**Experience the calming nourishment
of healing waters in one of our luxury
geothermal hot pools.**

RotoruaNZ.com

ROTORUA

Find your element



SUSTAINABLE TOURISM CHARTER

The Rotorua Sustainable Tourism Charter is a group of tourism operators committed to continual improvement in these areas:

- ▶ Supporting our community
- ▶ Acknowledging our community's multi-cultural values
- ▶ Protecting and enhancing our natural environment
- ▶ Efficient use of all available resources
- ▶ Statutory compliance
- ▶ A safe, enjoyable and informative experience for visitors

Charter member businesses are required to undergo a sustainability assessment and annual review process. Member businesses must commit annually to new actions that improve their sustainability performance.

Play your part

A sustainable visitor destination exists not only on the actions of the host community, but also on the actions of its visitors.



For Charter member businesses look for the Charter logo in this publication or visit **sustainableNZ.com**



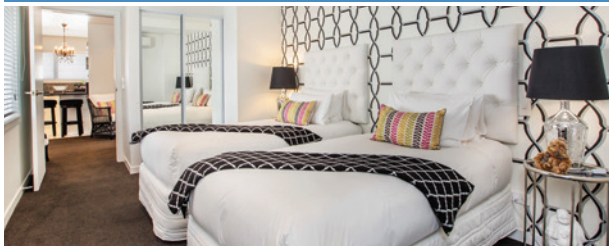
Whether it's an inviting hotel, luxury lodge, backpackers, charming motel, or camping under the stars, you'll find the perfect place to stay in Rotorua.

With more than 12,500 beds on offer, Rotorua caters for everyone with many of the accommodation options within a short walk of the heart of the city. For those who like to escape the hustle and bustle there are also stunning lake or countryside options. If you want to get a feel for how an accommodation provider is rated, look for the Qualmark rating system. The Qualmark star system independently rates various categories of accommodation in New Zealand and is a reliable indication of the standard of the facilities.

**HOT
TIP**

For more information on where to stay in Rotorua visit RotoruaNZ.com/visit

Regent of Rotorua



Prepare to be wowed by an eclectic mix of stylish spaces at Regent of Rotorua. Refreshingly original, the Regent marks the epitome of chic, luxury accommodation in the city. Restorative heated pools, a fabulous location and welcoming staff transform this boutique hotel into a sparkling gem that stands miles apart from the crowd.

35 rooms, conference facilities, award-winning restaurant/cocktail bar, free parking and WiFi. In the heart of the vibrant restaurant area.



📍 1191 Pukaki St, Rotorua
☎ (07) 348 4079
✉ info@regentrotorua.co.nz
🌐 regentrotorua.co.nz



Solitaire Lodge Executive Suite

Rydges Rotorua



Rydges Rotorua offers the city's most spacious accommodation rooms. Free unlimited WiFi and kids can stay and eat for free – two great reasons to stay with us. Situated beside the race course, enjoy great views across to Lake Rotorua and Mokoia Island. For those who rise early you will be able to watch the horses doing their early morning track work. Best available rates at rydges.com.

The hotel is within walking distance of the city centre and our large car park will ensure easy access to the hotel.

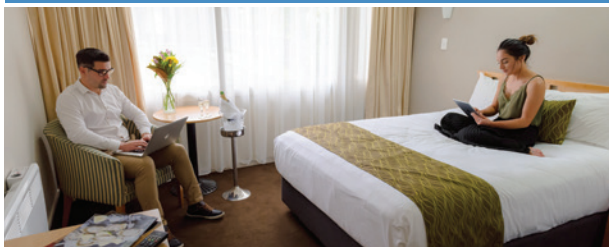


RYDGES
ROTORUA

- 📍 272 Fenton St, Rotorua
- ☎ (07) 349 0099
- ✉ reservations_rotorua@rydges.com
- 🌐 rydges.com/rotorua



The Copthorne Hotel Rotorua



The Copthorne Hotel Rotorua boasts 110 comfortable guest rooms. All rooms feature individual air-conditioning (ceiling fans only in standard rooms), limited Sky channels, WiFi access in all rooms. Desk, refrigerator, tea and coffee facilities, direct dial telephones, personalised voice mail, in-room safe, ironing facilities and hair dryers.

A choice of configurations are available including family options. Check-in: 2pm. Check-out: 10am

Copthorne
ROTORUA

- 📍 328/348 Fenton St, Rotorua
- ☎ (07) 348 0199
- ✉ copthorne.rotorua@millenniumhotels.co.nz
- 🌐 millenniumhotels.com/en/rotorua



Quest Rotorua Central



Located in Rotorua's CBD – fully self-contained apartment living with kitchen, laundry, lounge and dining facilities. We are a short walk to Rotorua Shopping and Restaurant Precinct, Convention Centre and other city attractions. Ideal accommodation for business and leisure visitors alike.

All apartments offer king beds, LED TVs, dedicated work stations, air-conditioning and free unlimited high speed WiFi.

Book direct for the best available rates.



📍 1192 Hinemoa St, Rotorua
☎ (07) 929 9808
✉ host@questrotoruacentral.co.nz
🌐 questrotoruacentral.co.nz



VR Rotorua Lake Resort

Best views in town, close to the airport and a host of activities, this is the perfect setting to do as much or as little as you like! Check out our daily specials and packages on our website. All rooms with views over Okawa Bay or the surrounding gardens.

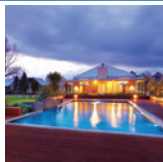


📍 366 State Highway 33, Rotorua
☎ (07) 362 4599
✉ rotorua.reservations@vrhotels.co.nz
🌐 vrrotorua.co.nz



Ramada Resort Rotorua Marama

Just 20 minutes from the city. Close to the region's geothermal attractions, including geysers, hot springs and boiling mud pools. Enjoy the pool, spa, gym, tennis court, BBQ facilities, café and bar. Book direct to get 10% off our best available rate (T's & C's apply).



📍 1420 Hamurana Rd, Mourea, Rotorua
☎ (07) 362 4120
✉ reception@ramadarotorua.co.nz
🌐 ramada.com



Emerald Spa Motor Inn



In the heart of Rotorua's tourism area, Tuscany Villas and Emerald Spa Motor Inn offer modern and well-kept suites, a heated outdoor swimming pool (October to March), BBQ facilities and friendly, personal service on-site.

With a range of luxury studio suites, one and two-bedroom family suites, all with spa bath, ensuite, kitchenette, Sky 50+ channels TV, complimentary unlimited WiFi and secure bike storage and bike wash down facilities.



Ideal for families, couples or executive travellers. Great central location, just a short walk into the CBD and only 5 minutes' walk to the supermarket or a short bike ride to the Redwoods.

📍 280 - 286 Fenton St, Rotorua
☎ (07) 348 7788 or 0800 20 40 88
✉ info@tuscanyvillasrotorua.co.nz
✉ stay@emeraldspa.co.nz



Terume Hot Spring Resort



Come and enjoy the tranquil ambience of our authentic Japanese Onsen in Rotorua, our Onsens are filled with 100% natural hot mineral water from 150 metres underground and are beneficial for stress relief and therapeutic usages. Studio and family units available. All hot baths for stay-in guests only. 5 minute walk to city centre.

Any clothing, swimwear and towels are not allowed in the baths.

Check-in: 3pm, Check-out: 10am



📍 88 Ranolf St, Rotorua
☎ (07) 347 9499
✉ terume@terumeresort.co.nz
🌐 terumeresort.co.nz

Cedarwood Lakeside



Tranquil accommodation on the shores of Lake Rotorua. Cedarwood Lakeside is one of the most relaxing motel and conference venues in Rotorua. Off the beaten track, located in a residential cul-de-sac. Cedarwood offers comfortable, spacious units in park like surroundings.

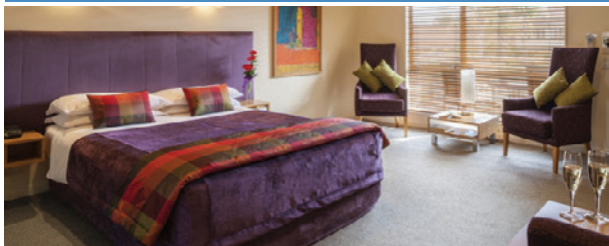
Relax and enjoy the views from our hot tub overlooking the lake, a short eight minute drive to the city centre, we offer plenty of space, parking for boats, playground, DVD library, swimming pool, BBQ and picnic area.



📍 17 Holden Ave, Holdens Bay, Rotorua
☎ (07) 345 7773
✉ welcome@cedarwood.co.nz
🌐 cedarwood.co.nz



Regal Palms Resort



Our modern, well-equipped accommodation is designed for comfort and relaxation, a short distance from cafés, restaurants and tourist attractions. We are the perfect place for corporate stays, romantic interludes and family holidays. We will have a mix of luxury studios, suites and apartments opening late December/early January.

Facilities include spa pool in all suites, Sky Guest Select, free WiFi, guest laundry, gym, heated swimming pool, mini golf, bikes, BBQ area, sauna, tennis court and playground.



📍 350 Fenton St, Rotorua
☎ 0800 74 3000 in NZ or (07) 350 3232
✉ experience@regalpalms.co.nz
🌐 regalpalms.co.nz



Aura Accommodation



Firmly establishing itself as a Rotorua favourite, Aura Accommodation has all your needs covered. Centrally located, heated outdoor pool, hot thermal pools with a strong focus on sustainability.

Crack open a beer while on the BBQ, let the kids (or big kids) loose on the trampoline and lawn games or go for a bike round town on the free explAura bikes.

Offering a range of geothermally heated rooms to suit all travellers with free WiFi, Netflix & Sky TV.



📍 1078 Whakaue St, Rotorua
☎ (07) 348 8134
✉ info@aurarotorua.co.nz
🌐 aurarotorua.co.nz



Rotorua Thermal Holiday Park



Situated in relaxing park-like grounds, stay and enjoy free hot mineral pools, a heated pool, tennis courts and a cricket pitch. Accommodation: tent sites, large powered sites, dorms, cabins, self-contained units and two bedroom motels. Closest holiday park to the internationally renowned mountain biking tracks. Ideal for families, mountain bikers, group bookings, school trips and sports groups. Pets welcome by prior arrangement. Discounts available to attractions/activities for guests.



Closest holiday park to the internationally renowned mountain biking tracks, yet only a few minutes from the city centre, within walking distance to the world famous Pohutu Geyser and a golf course.

📍 463 Old Taupo Rd, Rotorua
☎ +64 (07) 346 3140
✉ info@rotoruathermal.co.nz
🌐 rotoruathermal.co.nz



Blue Lake Top 10 Holiday Park – Rotorua



We are Rotorua's only TOP 10 Holiday Park located on the picturesque and stunning Blue Lake. Choose from our lake-view motels to self-contained units, or kitchen and standard cabins. The park offers quality accommodation to suit any sized group and budget. Walk across the road for a swim in Lake Tikitapu or take a short 5 minute drive to Lakes Okareka or Tarawera.

Comprehensive tour information and booking services provided.



📍 723 Tarawera Rd, Blue Lake, Rotorua
☎ 0800 808 292
✉ info@bluelaketop10.co.nz
🌐 bluelaketop10.co.nz

Rotorua Top 10 Holiday Park



Welcome to Rotorua's award-winning, premium-graded and 5-star rated holiday park. Conveniently located in the heart of the city and right next door to Kuirau Park, Rotorua's breathtaking free geothermal reserve. We offer guests premium facilities including free BBQ areas, wheelchair accessible facilities, playground, trampolines and a jumping pillow to keep the family entertained.

All guests receive access to WiFi, mineral pools and the Golds Gym, Rotorua. Tour bookings can be made at reception.



📍 1495 Pukuatua St, Rotorua
☎ 0800 223 267
✉ stay@rotoruatop10.co.nz
🌐 rotoruatop10.co.nz



Rotorua Family Holiday Park



Our family owned holiday park is in a quiet location with no sulphur smell and just 1 minutes walk to Lake Rotorua. On our grounds we offer various accommodation, motels, self-contained units, cabins, tents and campervan sites. Facilities include playground, spa pool, swimming pool (seasonal), BBQ area, TV room, fishing tackle shop and camping facilities. free unlimited WiFi.

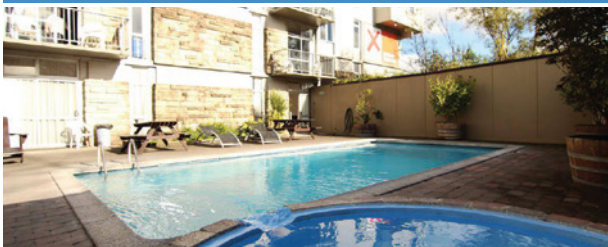
3 minutes drive north of Rotorua.
Closest holiday park to many of Rotorua's major attractions.



📍 22 Beaumont Rd, Ngongotaha, Rotorua
☎ 0800 574 289 or (07) 357 4289
✉ stay@rotoruafamilypark.co.nz
🌐 rotoruafamilypark.co.nz



Base Rotorua



Book Now 0800 22 73 69.

Fun backpacker accommodation located opposite Kuirau Geothermal Park and 5 minutes walk from Rotorua CBD. Facilities include free WiFi, a geothermal pool, carpark and the Lava Bar. Accommodation options include dorm share, female only dorms and private rooms.

Enjoy our famous hospitality at the Lava Bar with exclusive deals for Base guests.



📍 1286 Arawa St, Rotorua
☎ (07) 348 8636 or 0800 Base NZ
✉ rotorua@stayatbase.com
🌐 stayatbase.com



© ZORB

Rotorua is an adventure playground with a plethora of activities to enjoy.

Rotorua is home to a stunning variety of world class adventure activities, including the highest commercially rafted waterfall in the world (the 7m Tutea Falls). Prepare to get your adrenalin pumping! You can also experience the region's world famous mountain biking trails, the spectacular scenery of our 18 lakes and pristine native forest, geothermal otherworldly landscapes, amazing spas and hot springs and rich cultural history. There are also plenty of family friendly activities to keep the kids happy.

**HOT
TIP**

For more information on what to do in Rotorua visit RotoruaNZ.com/visit

Rotorua Duck Tours



Experience the thrill of riding on a converted WWII Amphibious Landing Craft (The Duck), while you enjoy incredible lake and mountain scenery. Visit up to four lakes set amongst unique natural landscapes.

Our legendary guide will bring Rotorua alive by retelling stories of the past and providing information on Māori culture, geothermal wonders, ecology, historic sights, flora and fauna. Our tours offer a great introduction to Rotorua and are perfect for all ages.



Two tours available, Rotorua City & Lakes Tour (Family Fun) and Tarawera & Lakes Tour (Eco Tour) running every day in all weather. Language translation sheets available.

📍 1241 Fenton St, Rotorua
☎ (07) 345 6522
✉ info@ducktours.co.nz
🌐 rotorua ducktours.co.nz



Rotorua Canopy Tours



Soar through the trees and experience New Zealand's ancient forest like never before – in an award-winning zipline adventure. Journey with authentic Kiwi guides along a network of ziplines, suspended swing bridges, treetop platforms and forest trails as you immerse yourself in this 1,000 year-old native eco-system. Come face to face with New Zealand native birds and find out how we can make our forest great again. This unique eco-adventure will leave you in awe of our native flora and fauna, and give you a whole new appreciation of our natural world.



Ultimate and Original Canopy Tours depart throughout the day and in all weather. Bookings are highly recommended. Suitable for ages 6+ years. 120kg weight limit does apply.

📍 147 Fairy Springs Rd, Rotorua
☎ (07) 343 1001 or 0800 22 66 79
✉ hello@canopytours.co.nz
🌐 canopytours.co.nz



Waikite Valley Thermal Pools



Bathe in 100% natural clear geothermal waters, direct from the Te Manaroa Spring, New Zealand's largest single source of natural boiling water. Bathing temperatures of between 36 and 40 degrees are offered across six bathing pools.

Private Pools are also available, bookings recommended. Stay the night in the adjacent camping ground, powered and non-powered sites available. Relax with a beer or a wine from the Pukeko in a Ponga Tree café.



Situated 36km south of Rotorua on SH5. The ideal place to relax all year round. Experience The Living Waters of Waikite Valley Thermal Pools. Open 7 days from 10am to 9pm.

📍 648 Waikite Valley Rd, Rotorua
☎ (07) 333 1861
✉ info@hotpools.co.nz
🌐 hotpools.co.nz



Redwoods Treewalk – Day



Walk high and up close to the majestic gentle giants of Rotorua's iconic Redwood Forest. This 30 minute ecological walk provides a unique bird's eye perspective, capturing picturesque beauty and ambience. The walkway has been specifically designed and constructed to preserve the trees and the surrounding natural environment. A perfect wet weather activity with the stunning colours of the forest coming to life in the rain. Enjoy the peacefulness at your own pace and leave feeling inspired, refreshed and rejuvenated.



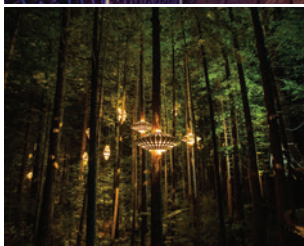
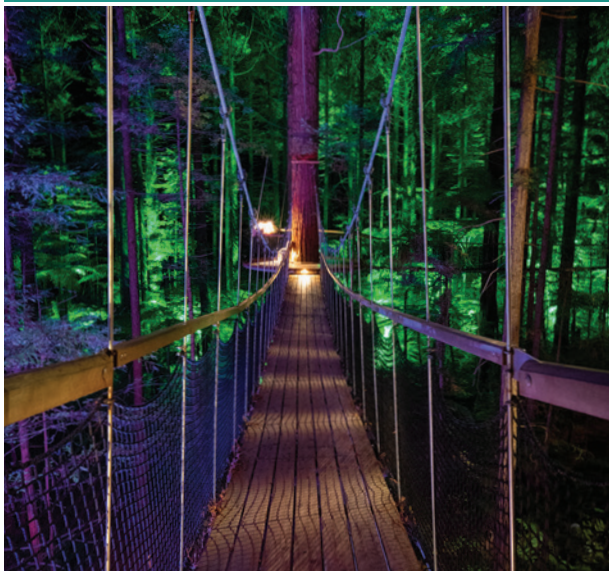
Redwoods
Treewalk®

The 700 metre long eco-tourism tree walk consists of 28 suspension bridges (up to 20 metres above the forest floor), and traverses 27 majestic Redwood trees.

📍 Long Mile Rd, Whakarewarewa, Rotorua
✉ info@treewalk.co.nz
🌐 treewalk.co.nz



Redwoods Treewalk – Night



Open every night, the enchanted forest comes alive with the Redwood Nightlights. The creations of award winning design and conservation icon David Trubridge, this immersive experience ensures that you discover the forest in a whole new light; enhancing the majesty of the Redwoods and the native ferns. See this natural treasure from a bird's eye perspective, up to twenty metres from the ground. Walk into the canopy of the forest, breathe in the pure air and listen to the chorus of native birds. This is a truly magical and surreal experience.

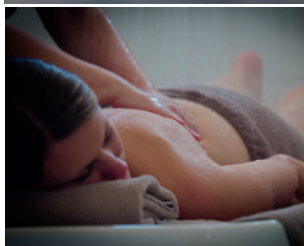


Rates start at \$30/adult and \$20/child for the daytime or nightlights experience, upgrade to a combo for an additional \$10pp. Family packages available. Open 9am to late.

📍 Long Mile Rd, Whakarewarewa, Rotorua
✉ info@treewalk.co.nz
🌐 treewalk.co.nz



Polynesian Spa



Relax and unwind at Polynesian Spa, a world-leading, natural mineral bathing and luxury spa retreat. Geothermal waters nourish the skin and relieve tired muscles, aches and pains, while decadent massage therapies rejuvenate using ancient and modern techniques. On-site café and gift shop combine for the perfect experience.



Polynesian Spa has 28 geothermal mineral pools and is open daily from 8am to 11pm. The slightly acidic Priest Spring relieves tired muscles, aches and pains while the alkaline waters of the Rachel Spring nourishes skin. Bathing suits and lockers are available for hire. Café and Spa Gift Shop on-site.

Share your photos on Instagram #PolynesianSpa

📍 1000 Hinemoa St, Rotorua
☎ (07) 348 1328
✉ info@polynesianspa.co.nz
🌐 polynesianspa.co.nz



Hell's Gate – Geothermal Reserve & Mud Spa



Witness a land born of myth and legend, where Rūaumoko heats the earth from a world below, boiling mud and billowing steam into the air above. Journey through native bush that opens up into geothermal landscapes, and bathe in mud and sulphur pools that revitalise mind, body and soul. Experience New Zealand's most active geothermal reserve and mud spa as it excites and soothes, as it has done for centuries.



Open every day except Christmas. Summer hours: 8.30am to 10pm (1 October to 31 March). Winter hours: 8.30am to 8.30pm (1 April to 30 September). Free shuttle with any package – bookings essential. Guided tours depart daily. Bring swimwear and towels or hire on-site.

📍 351 State Highway 30, Tikitere, Rotorua
☎ (07) 345 3151
✉ info@hellsgate.co.nz
🌐 hellsgate.co.nz



Rail Cruising – Self Drive Rail Cars



Imagine sitting in your own rail car travelling along a railway line with nothing ahead but the unobstructed curve of the rail stretching out into the distance, with the countryside drifting by and the clickety clack sound of the rail beneath you.

The RailCruiser was designed to provide people the freedom to experience rail travel in your own personal rail car. Each RailCruiser can carry up to four adults or two adults and three children.



Duration 1.5 hours, 19km trip return. Trips depart daily and prices vary. Bookings essential. Pick up from Rotorua accommodation available at an extra cost.

-
- 📍 11 Kaponga St, Mamaku, (19kms north of Rotorua)
 - ☎ 0800 72 45 74
 - ✉ info@railcruising.com
 - 🌐 railcruising.com
-

ZORB Rotorua



Superman dive into a giant inflatable ball and roll down Mt Ngongotaha with ZORB, where the fun will have you laughing uncontrollably.

Discover FOUR different ball rolling tracks – the world's longest zig-zag Sidewinder Track, the smooth 'n' fast double Straight Track, MEGA

Track – the longest, fastest and steepest track in all the land, and the newest track; Big Air, our latest thrill ride. Ride with water or without water, the choice is yours! Rotorua is the ONLY location in New Zealand where you can experience this amazingly fun and bizarre bucket list activity!

ZORB™

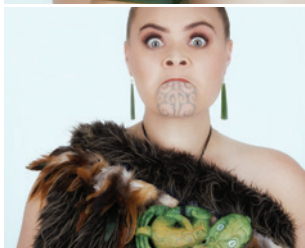
5 minutes' drive north of Rotorua City. Open 364 days 9am to 5pm (later in summer).

Suitable for all ages from 5 years of age.

📍 525 Ngongotaha Rd, Fairy Springs, Rotorua
☎ 0800 646 768
✉ info@zorb.com
🌐 zorb.com



Puawai Jade



Locally owned and managed, we are specialists in carving authentic New Zealand Jade (Pounamu) into Māori traditional adornment and jewellery. We have two jade carvers on-site, where you can watch how pendants, sculptures and jade jewellery are made. We can also custom design traditional pendants, gold or sterling silver jewellery to suit you.



Located in Eat Street, we are open 7 days a week from 10am to late.

📍 1093 Tutanekai St, Rotorua
☎ +64 (0)7 348 6499
✉ info@puawaijade.nz
🌐 puawaijade.nz

Paradise Valley Springs Wildlife Park



Interact with and hand-feed New Zealand's wild animals, trout, native birds and friendly farm critters. See native eels, our waterbird wetland and walk through Kea Aviary. Taste pure water straight from our spring, and take our elevated treetops walk through mature New Zealand bush.

Get close to the 'Pride of Paradise' - our large pride of African lions who are fed daily at 2.30pm.



Open every day of the year from 8am to dark with last entry at 5pm. Lion pride feeding 2.30pm, Kea and possum feeding 3pm every day.

10 minutes from Rotorua city.

📍 467 Paradise Valley Rd, Rotorua
☎ (07) 348 9667
✉ info@paradisev.co.nz
🌐 paradisevalleysprings.co.nz



Buried Village



Encounter first-hand how the Tarawera Eruption drastically changed the landscape and lives of the people of Te Wairoa, at New Zealand's most visited archaeological site. There is so much to love about the Buried Village: an award-winning museum, excavated village sites, café and store, guided tours and beautiful waterfall trail. An authentic, peaceful and fascinating experience awaits. We look forward to welcoming you.



Scenic drive East from city, past Redwood Forest Treewalk (5 minutes), Blue & Green Lake walk (10 minutes), Tarawera Trail (15 minutes) and arrive at The Buried Village (20 minutes).

Open from 9am daily (except Christmas).

📍 1180 Tarawera Rd, Rotorua
☎ (07) 362 8287
✉ discover@buriedvillage.co.nz
🌐 buriedvillage.co.nz



Skyline Rotorua



Feel the thrill of Skyline Rotorua's adrenalin fuelled gravity fed rides with the ultimate Half Day Pass. The best way to experience four must-do activities in Rotorua while soaking in the views of the city—enjoy a return gondola ride up Mt Ngongotaha, five luge rides, zipline ride, skyswing ride and take a photo home to remember your experience. This pass ensures maximum fun at awesome value. Allow 3 to 4 hours to complete all activities!



Open 365 days of the year from 9am to late and just five minutes drive from central Rotorua.

Please share photos with us: #Skylinerotorua

📍 178 Fairy Springs Rd, Rotorua
☎ (07) 347 0027
✉ info@website.com
🌐 skyline.co.nz/rotorua



Skyline Rotorua Stargazing



Look for shooting stars and discover planets invisible to the naked eye with the amazing Skyline Rotorua Stargazing experience atop Mt Ngongotaha - one of the top spots in New Zealand for stargazing. The most impressive telescope performs 2,586 times better than your eye to see space like never before and your knowledgeable guide will point out breath-taking constellations. Open now.



Tours depart daily, after dark, year-round and run for 60 mins. Session times vary as sunset times change regularly. Visit skyline.co.nz/rotorua to see when you can book.

#StargazingRotorua

📍 178 Fairy Springs Rd, Rotorua
☎ (07) 347 0027
✉ rotorua@skyline.co.nz
🌐 skyline.co.nz/rotorua



Skyline Rotorua MTB Park



Skyline Rotorua MTB Park is the world's first all season, gondola accessed mountain bike park.

Featuring twelve mixed grade trails on Mt Ngongotaha spanning over 12km – you'll love riding the trails from beginner through to expert, with multigrade features including a 2km jumps trail. We offer a range of gondola assisted bike passes to suit every rider. Bikes can be hired on arrival.



The Skyline Rotorua MTB Park offers a range of uplift passes for riders. From a single uplift, to the great value 100 uplift pass, you are going to find the perfect riding pass to suit.

📍 178 Fairy Springs Rd, Rotorua
☎ (07) 347 0027
✉ rotorua@skyline.co.nz
🌐 skyline.co.nz/rotorua



Hobbiton™ Movie Set



Experience the real Middle-earth™ at Hobbiton™ Movie Set where you can step into the lush pastures of the Shire™ as seen in The Lord of the Rings and The Hobbit Trilogies.

HOBBITON™
• MOVIE SET •

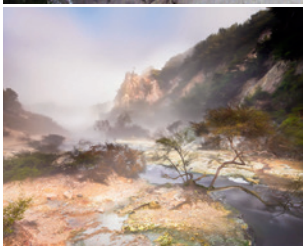
Your guide will escort you around the movie set, pointing out fascinating details and explaining how the movie magic was made. See Hobbit Holes™, the Mill, and enjoy a drink in the famous Green Dragon™ Inn from our exclusive range of beverages.

Tours depart twice daily from Hobbiton™ Movie Set Shop, 1235 Fenton Street, Rotorua, and regularly from The Shire's Rest, 501 Buckland Road, Hinuera, Matamata.

📍 1235 Fenton St, Rotorua
☎ 0508 4 HOBBITON
🌐 hobbitontours.com



Waimangu Volcanic Valley



We connect people with the beating heart of the world's youngest geothermal valley, its unique history and legacy.

We share how the world began.

Waimangu is home to the now hidden Pink and White Terraces.

Immerse yourself in the stories of the 1886 Mount Tarawera volcanic eruption, its people and the resulting dramatic landscape changes that created this unique part of the world.



Explore on foot with a variety of self-guided nature walks, hikes and lake cruises, interpretive signage, technology, map guides and human to human interaction. Immerse, imagine and feel the unique geothermal features, regenerating forest, bird life, botany and culture and legacy of the Waimangu Volcanic Valley.

📍 587 Waimangu Rd, Rotorua

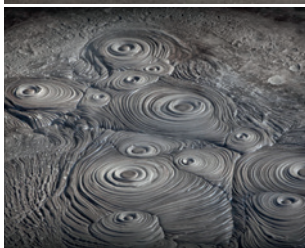
☎ (07) 366 6137

✉ nature@waimangu.co.nz

🌐 waimangu.co.nz



Whakarewarewa The Living Māori Village



Set in a geothermal wonderland, Whakarewarewa – The Living Māori Village is one of New Zealand's oldest, iconic and most authentic destinations. Home to two Māori sub-tribes, residents have been welcoming and sharing their enviable way of life for over 100 years.

Enjoy a guided tour with a local, be enchanted by a Māori concert performance, taste traditional Māori food (hangi) cooked by Mother Nature in geothermal steamboxes and view New Zealand's most famous and largest geyser, Pōhutu. Whakarewarewa is just minutes away from central Rotorua. Gain fascinating historical insights and learn how local residents live among bubbling mud pools and active geysers. This will be a memorable experience for all ages. Open 8.30am to 5pm daily.



THE LIVING MĀORI VILLAGE
Whakarewarewa
ROTORUA NEW ZEALAND

📍 17 Tryon St, Whakarewarewa Village
☎ (07) 349 3463
✉ info@whakarewarewa.com
🌐 whakarewarewa.com



Kaitiaki Adventures



Kaitiaki Adventures is your professional Whitewater Rafting and Sledging Company. Based on the Okere section of the Kaituna River, we mix the amazing scenery of the river with a grade 5 rafting experience, including the world's highest commercially rafted waterfall. Maritime New Zealand approved and Qualmark rated, Kaitiaki Adventures offers New Zealand culture blended with fun and whitewater adventure. Experience the Kaitiaki difference today!



Open 7 days a week offering Kaituna Grade 5 Rafting, Kaituna Grade 3 Sledging and Wairoa Grade 5 Rafting (subject to availability). Located within the Diversion Maze Park.

📍 1135 Te Ngae Rd, (Diversion Maze Park)
☎ 0800 338 736
✉ info@kaitiaki.co.nz
🌐 kaitiaki.co.nz



Orakei Korako Cave and Thermal Park



Situated between Taupō and Rotorua lies “The Hidden Valley” of Orakei Korako Cave and Thermal Park. Wander through a valley of bubbling hot springs, natural active geysers, amazing silica terraces and an extremely rare geothermal cave.

TripAdvisor Certificate of Excellence 2011–2017 and Hall of Fame 2015.

Lonely Planet writes: “...arguably the best thermal area left in New Zealand.” Follow us on Facebook and Instagram!

**Orakei
Korako**
Cave and Thermal Park

Open all year round from 8am to 4.30pm (4pm in the winter). Our tour lasts approximately 1 to 1½ hours. Come early and relax in our MudCake Cafe with a coffee and enjoy the fantastic surroundings.

📍 494 Orakei Korako Rd, Reporoa
☎ (07) 378 3131
✉ admin@orakeikorako.co.nz
🌐 orakeikorako.co.nz



Kaituna Cascades



Join the original Kaituna rafting company for unbeatable grade 5 whitewater adventures on New Zealand's most exciting and beautiful rivers! Experience 14 epic rapids in the amazing deep warm water canyons of the Kaituna River including the world's highest rafted waterfall! We strive to give you the safest and most entertaining trips on the river.

Our sweet rafting base is located on the shores of the Kaituna River. Come join our awesome crew!



Daily departure: Kaituna River at 9am, 11.45am and 2.30pm (4.30pm summer only). Wairoa River on selected Sundays. Rangitaiki River on request. Bring swimwear and a towel. Free shuttle and online specials available.

📍 18 Okere Falls Road, Okere Falls, Rotorua
☎ 0800 KAITUNA (524 8862) or 027 276 5457
✉ info@kaitunacascades.co.nz
🌐 kaitunacascades.co.nz



3D Trick Art Gallery



Experience the first and only 3D art gallery in NZ. A unique, exciting and educational activity for all ages. More than 50 trick artworks are displayed in 5 themes including Māori culture, NZ sports, leisure and grand nature, created by professional 3D painters. Jump into the paintings, be immersed and play with the optical illusion. Take photos and create your own interpretations. Send us your pictures to take part in our regular competitions.

3D TRICK ART GALLERY

Rotorua Heritage Farm has fun-filled and educational activities for all visitors. Come and enjoy a great day at The Farm Tour, 3D Trick Art and Farmside Buffet, all at one location.

📍 171 Fairy Springs Rd, Rotorua
☎ (07) 349 0920
✉ info@3dtrickart.co.nz
🌐 3dtrickart.co.nz

The Farm Tour



The Farm Tour is an hour long guided tour, travelling through a farm environment in covered trailers. Visitors can feed and interact with animals with a tour guide providing educational information about the farm and its livestock.

The experience concludes with an outstanding and amusing sheep mustering dog demonstration show and sheep shearing show which is a must-see performance.



Rotorua Heritage Farm has fun-filled and educational activities for all visitors. Come and enjoy a great day at The Farm Tour, 3D Trick Art and Farmside Buffet, all at one location.

📍 171 Fairy Springs Rd, Rotorua
☎ (07) 349 0920
✉ info@thefarmtour.co.nz
🌐 thefarmtour.co.nz

Fancy Meow Cat Cafe



Welcome to Fancy Meow Cat Cafe, the very first cat café in Rotorua and the only cat café in New Zealand with purebred cats! Our cats and kittens are always grateful for the play and cuddle time with their human companions. So come in for a visit to relax, decompress and enjoy your break with our furry friends. Menu of hot drinks are available for you to enjoy while you unwind. With a flat-screen TV, free WiFi, air con and even a massage chair, we want to create a home-like environment for you and your family/friends. Experience an unforgettable memory with over 16 fur balls!



Located in the heart of the Rotorua CBD, attached to Gelato Mio Ice Cream. Open from 9.30am. Last entry at 4.30pm. Online booking available at fancymeowcatcafe.co.nz.

📍 1210 Arawa St, Rotorua
☎ (07) 460 6868
✉ info@fancymeowcatcafe.co.nz
🌐 fancymeowcatcafe.co.nz



Rotorua Rafting



Home to the highest commercially rafted waterfall in the world – Tutea Falls – 7 metres high! Raft with the local specialists and experience the Rotorua Rafting difference as they take you to the limit of your comfort zone enjoying the playfulness of the beautiful Kaituna River.



Use Promo Code #ROTORUA10 and get \$10 off per person.

Situated 20km from Rotorua on SH33. With the warmest raftable river in New Zealand it's a must-do! We offer trips at 9am, 12pm and 3pm daily with others on demand. Bookings essential.

📍 761 State Highway 33, Okere Falls, Rotorua
☎ 0800 772 384
✉ raft@rotorua-rafting.co.nz
🌐 rotorua-rafting.co.nz



Wai-O-Tapu Thermal Wonderland



Sculptured out of volcanic activity and thousands of years in the making, Wai-O-Tapu Thermal Wonderland is considered to be New Zealand's most colourful and diverse geothermal sightseeing attraction. You are introduced to a uniquely different natural landscape, one of the most extensive geothermal systems in New Zealand, extending over 18km². See the Lady Knox Geyser at 10.15am every day, view the unique Champagne Pool and the largest Sinter terraces in the Southern Hemisphere.



Open every day of the year.

Winter: 8.30am to 5pm (last admission 3:45pm).

Summer: 8.30am to 6pm (last admission 4:45pm).

Visit our website for further information.

📍 201 Waiotapu Loop Rd, RD3, Rotorua
☎ (07) 366 6333
✉ info@waiotapu.co.nz
🌐 waiotapu.co.nz



River Rats Raft & Kayak



River Rats Raft & Kayak offer quality rafting and kayaking experiences. We pride ourselves on a safety first culture and our friendly, professional guides. There's something for everyone, from full on action including the world's highest commercially rafted waterfall through to a gentle scenic raft trip suitable for the whole family. Kayaking is available as freedom hire or a guided tour.



Located at Rotorua Airport, 10 minutes from Rotorua CBD. Transfers available. Open 365 days a year. Please phone for reservation. Phones operate 8am to 9.30pm. Bring swim wear and a towel, we provide everything else.

📍 Hangar 14S, Rotorua Airport, 837 Te Ngae Rd, Rotorua
☎ (07) 345 6543
✉ info@riverrats.co.nz
🌐 riverrats.co.nz



Lady Janes Ice Cream Parlour



Take time out with family and friends to enjoy a sumptuous tasty treat at Rotorua's iconic Lady Janes Ice Cream Parlour. Tickle your taste buds with over 50 flavours, such as cookies & cream, white chocolate & raspberry, black doris plum, hokey pokey and many more. There is something for every one, from Danish waffle cones to fabulous sundaes, yummy smoothies ... and the list goes on. Great coffee also available. This is your one-stop shop for dessert – rain or shine!



Take a photo with your delicious ice creams and tag us!
Instagram: [#ladyjanesicecreamparlour](https://www.instagram.com/ladyjanesicecreamparlour)

📍 1092 Tutanekai St, Rotorua
☎ (07) 347 9340
✉ ladyjanesicecream@gmail.com
📱 Lady Janes Ice Cream Parlour

Mountain Jade



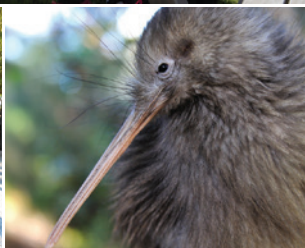
Every day, you can join a free guided tour of our jade carving workshop. You'll discover how we transform raw stone into carved art and meet local artists as they craft jade by hand. We'll take you on a journey into the important role pounamu plays in Māori culture, exploring its traditional uses and uncovering the legends and stories which breathe life into the stone. You'll also see how jade from different countries around the world varies in colour and texture, and learn how this treasured stone was formed millions of years ago deep within the earth.



Our free 15 minute guided tours run daily, on-demand, between 10am and 5pm. No bookings are required and tours are suitable for all ages and weather conditions.

📍 1288 Fenton St, Rotorua
☎ +64 (0)7 349 1828
✉ sales@mountainjade.co.nz
🌐 mountainjade.co.nz

Te Puia Te Rā (Day Pass)



Come face to face with Pōhutu Geyser, jumping mud pools, and live kiwi birds; watch master carvers and weavers at work, and take an hourly guided tour to hear our guides share stories passed down from their ancestors.

Also add our haka (cultural performance) or Kai Ngāwha (steambox lunch) products for an added cultural immersion that showcases our vibrant culture through dance, song and also cuisine.



Concert times: 10.15am, 12.15pm, and 3.15pm.

Steambox tour and lunch experience: 11am to 1.30pm.

Open 365 days: Summer 8am to 6pm, Winter 8am to 5pm.

📍 Hemo Rd, Rotorua
☎ (07) 348 9047 or 0800 TE PUIA
✉ reservations@tepuia.com
🌐 tepuia.com



Te Puia Te Pō (Indigenous Evening Experience)



Enjoy a mouth-watering banquet of authentic Māori kai (cuisine) and marvel at the breath-taking beauty of our geothermal valley under lights. This includes a traditional welcoming ceremony (pōwhiri) and intimate concert performance. Or alternatively enjoy the ultimate way to experience Māori culture and add the Te Rā (Day Pass) including all that it encompasses in an exclusive guided tour.



Te Rā (Day Pass) + Te Pō (Indigenous Evening Experience):
4.30pm to 9pm.

Te Pō (Indigenous Evening Experience): 6.15pm to 9pm.

Open 365 days: Summer 8am to 6pm, Winter 8am to 5pm.

📍 Hemo Rd, Rotorua
☎ (07) 348 9047 or 0800 TE PUIA
✉ reservations@tepuia.com
🌐 tepuia.com



Katoa Lake Rotorua



Based right at the city lakefront, we have various adrenaline jet boat trips from 30 minutes, while our drivers immerse you in the history & legends of Lake Rotorua. We are the only operator to land on the famous Mokoia Island for guided tours on either our jet boat or our new water taxi. The island is also a bird sanctuary.

Try our parasailing tandem, solo or triple flights up to 400 feet. Awesome views and a unique experience. Fun and educational.



Conveniently located at the city lakefront, we are open 364 days from 8.30am. Trips depart hourly. Kids under 5 years are free for jet boating. Minimum age is 10 for parasailing. Try our Sky Jet Combo.

📍 Memorial Drive City, Lakefront Rotorua
☎ (07) 343 7600
✉ info@katoalakerotorua.co.nz
🌐 katoalakerotorua.co.nz



Tamaki Māori Village



Voted #7 best attraction in the world by TripAdvisor in 2018! Tamaki Māori Village offers a world class cultural experience. Learn about the origins of the Māori people, their journey to Aotearoa – NZ and how these proud people have upheld the traditions of their ancestors. Tamaki Māori Village is an immersive, interactive and entertaining experience open nightly.



Inclusions: return transport from Rotorua accommodation, welcome ceremony, village tour, performances, hangi dinner and desserts served buffet style. Wear comfortable footwear, a warm jacket and allow 3.5 hours. Bookings essential.

📍 1220 Hinemaru St, Central Rotorua
📞 0508 TAMAKI (826254)
✉ bookings@maoriculture.co.nz
🌐 Tamakimaorivillage.co.nz



RiverJet – Thermal Safari The Ultimate Adventure Combo



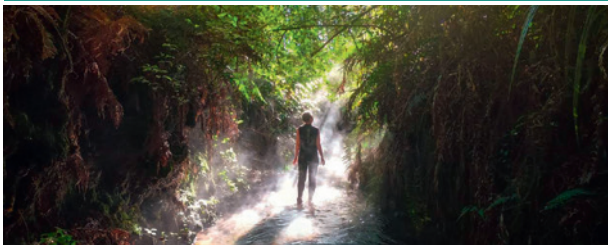
Wind your way up the Waikato River on one of RiverJet's powerful boats to the mystical world of Orakei Korako Thermal Park. Enjoy stunning scenery, bubbling mud pools, geysers, silica terraces and the closest thing in existence to the world famous Pink and White Terraces. Then jump back on board for an adrenalin filled blast back.

2.5 hour experience. Located approximately half way between Rotorua and Taupo on SH5. Open daily except Xmas Day. Enquire about our group rates and packages.



📍 6 Tutukau Rd, SH5
☎ 0800 RIVERJET (748375)
✉ sales@riverjet.co.nz
🌐 riverjet.co.nz

“The Squeeze” – World Famous Jet Boat – Canyon – Hot Spring



The perfect combination of fantasy, adventure and relaxation. The Squeeze excursion offers thrills of a jet boat ride, the serenity of New Zealand's untouched nature and the adventure of 'squeezing' through tight rock passages to reach your mystical destination, a heated relaxing water fall and rock pool.

2.5 hour experience. Located approximately half way between Rotorua and Taupo on SH5. Open daily except Xmas Day. Enquire about our group rates and packages.



📍 6 Tutukau Rd, SH5
☎ 0800 RIVERJET (748375)
✉ sales@riverjet.co.nz
🌐 riverjet.co.nz

aMAZEme Rotorua “Have Fun – Get Lost!”



Old-fashioned family fun for all ages, aMAZEme opened in 2010 as a must-do experience where people of all ages can come and have a great time together in a lovely, relaxing environment.

Get lost in the 1.4km hedge maze and home of the giant board games. Bring a picnic. We also offer toys for toddlers.

Present this advert or mention ‘Visitor Guide’ to receive 10% off your entry (conditions apply; discount does not apply to family pass).



📍 1335 Paradise Valley Rd, Rotorua

☎ (07) 357 5759

✉ amazeme@xtra.co.nz

🌐 amazeme.co.nz

Rotofobia Escape Adventure



Our escape adventures:

One Hell Of A Kitchen: Escape from chef with one hell of a hobby. Catch Me If You Can: Are you the right team for the job? Strip-Club Escape R18: Rely on your basic instinct to escape! Expect to be thrilled! Check our website for available days and times.

Crack codes, find clues and solve mysteries in our top-notch escape adventure house in the centre of Rotorua! Your team is locked up in a room and given 60 minutes to escape!



📍 1282 Hinemoa St, Rotorua

☎ (027) 527 9660

✉ info@rotofobia.co.nz

🌐 rotofobia.co.nz

Electric Bike Rotorua | Mohawk Ebike Tours



Explore Rotorua on the saddle of an e-bike! Electric Bike Rotorua offers e-bike rentals and tours for all riders! City cruisers, hardtail, or full-suspension e-MTBs! Kids e-bikes and child seats also available. Guided Mohawk e-MTB Tours are available to make the most out of your Redwoods Forest experience.

High quality electric bikes – explore the city and forest. Safety gear provided, shuttles available from accommodation or to start point.



📍 1265 Fenton St, Rotorua
☎ (07) 460 0844
✉ info@electricbikerotorua.com
🌐 electricbikerotorua.com

Kahukiwi Experiences



Explore the untouched, sacred land of the Ngāti Pikiao tribe, in this intimate, small group three-hour 4WD experience. Guided by our local and highly knowledgeable Māori guide, you'll explore our stunning marae, landscapes and never-before-seen views that look over Rotorua's lake district.

Tours depart at 9am and 1.30pm in all weather. Bookings highly recommended. Suitable for ages 6 and up. Pickups from Rotorua accommodation is part of the tour.



📍 1268 Haupapa St, Rotorua
☎ (07) 282 2402 or (021) 721 602
✉ info@kahukiwi.co.nz
🌐 kahukiwi.co.nz



Totally Tarawera



Welcome to the Māori tribal lands of Lake Tarawera, Rotorua. Enjoy a guided lake cruise and learn our history and family stories. Explore one of our stunning walking trails, swim at our geothermal Hot Water Beach or visit the spectacular Tarawera Falls. All this in full view of our sacred mountain. Check our website for details.

15 minute stunning drive from Rotorua city.
Tribal family owned and operated business.
Open 364 days.



📍 The Landing, Lake Tarawera, Rotorua
☎ (07) 362 8080
✉ info@totallytarawera.com
🌐 totallytarawera.com



Rotorua Golf Club



One of NZ's leading golf courses situated in the picturesque Whakarewarewa Geothermal Valley. The golf course is an 18 hole, par 70 course providing variety and challenge. Steaming hot pools, bubbling mud, as well as bunkers make up the unique golf hazards around the course. The golf club has a fully equipped professional golf shop with clubs, trundlers and electric cart hire to ensure clients enjoy their round of golf. After a memorable round clients can also take advantage of the fully licenced restaurant and bar. Enquire about competitive group and trade pricing.



📍 399 Fenton St, Rotorua
☎ (07) 348 4051
✉ rotorua@golf.co.nz
🌐 rotoruaagolfclub.co.nz



Lakeland Queen



NZ's only stern-wheel paddle driven vessel, the Lakeland Queen offers a range of 1 hour scenic cruises, capturing the very best of Lake Rotorua's natural wonders while you dine. Join us on this relaxing experience and witness the geothermal area of Sulphur Bay, stunning lake views including Mokoia Island and the city.

Daily departures: 8am breakfast, 1pm lunch and 6pm dinner cruise options. Coffee & Wine Cruise options also available. Bookings essential.



📍 Lakefront, Memorial Dr, Rotorua
☎ (07) 348 0265
✉ info@lakelandqueen.com
🌐 lakelandqueen.com



Volcanic Air Helicopters & Floatplanes



Helicopter and floatplane tours include flights over stunning volcanoes, ancient forests, vibrant geothermal activity and beautiful crater lakes. Helicopter options include the unique opportunity to land on and explore White Island (permanently active marine volcano) and atop Mount Tarawera for views of spectacular volcanic craters.

Flights depart from the Rotorua City Lakefront. Priced from \$115.00 per person. Duration from 8 minutes to 3.5 hours. Open daily from 8.30am.



📍 Memorial Dr, City Lakefront, Rotorua
☎ (07) 348 9984 or 0800 800 848
✉ info@volcanicair.co.nz
🌐 volcanicair.co.nz



Horse Trekking Lake Okareka



Horse trek through 500 acres of native bush and 1,500 acres of working sheep and cattle farm with stunning views of Lake Okareka, Lake Tarawera and Mount Tarawera. Horses to suit all abilities, with guided treks from 30 minutes to 3 hours. What a fantastic way to enjoy the fresh air and experience the region. Rides to suit all abilities from beginners to experienced riders.

Daily departures at 10am, 1.30pm and times to suit. Various routes on offer, depending on weather, trail conditions & rider experience.



📍 Longfords Farm, 51 Acacia Rd, Lake Okareka
☎ (021) 292 2233
✉ lucy@treklakeokareka.co.nz
🌐 treklakeokareka.co.nz



Velocity Valley Adventure Park



Conquer fears and discover new limits by launching into action at NZ's ultimate adventure hub. Velocity Valley is NZ's premier adventure park with five unique rides. Fun for the whole family. Home to the world's only Shweeb, NZ's only Agrojet, Swoop & Freefall Xtreme & Rotorua Bungy. Present this advert & receive 50% off your photo and video package.

Courtesy transport available from CBD, please call to schedule a pick up time. Open 9am to 5pm daily, closed Christmas Day.



📍 1335 Paradise Valley Rd, Rotorua
☎ 0800 949 888
✉ reservations@velocityvalley.co.nz
🌐 velocityvalley.co.nz



Adrenalin Forest



High excitement, stomach churning and a great confidence builder. Test your skills on an Adrenalin Forest aerial obstacle course. Adrenalin Forest courses feature over 100 fun filled challenges across six levels. Each level is harder than the last! To conquer them all and claim your bragging rights you'll be climbing, jumping & swinging at least 20 metres up in the air.

Located among natural surroundings in the Bay of Plenty, Wellington, Auckland and Canterbury. Opening hours may vary, please see our website for current hours of operation.



📍 TECT All Terrain Park, Upper Pyes Pa Rd, Tauranga
☎ (07) 929 8724
✉ tauranga@adrenalin-forest.co.nz
🌐 adrenalin-forest.co.nz



Rotorua Super Passes



Rotorua Super Passes is a one stop shop offering the best of Rotorua attractions. Super Passes enable great savings allowing flexibility to visit attractions when it suits. Most Passes can be done in one day or over several days. Passes are available to self drive or with transport included.

All passes include entrance to activities. Transport included options are on a seat in coach basis with pick up from CBD accommodation. Bookings can be made via the contact details below.



📍 PO Box 12076, Rotorua 3045
☎ (022) 304 8171
✉ res@rotoruasuperpasses.co.nz
🌐 rotoruasuperpasses.co.nz

Off Road NZ & Raceline Karting



Visit Off Road NZ, you will be driven by adventure! Raceline Karting: 1.2km outdoor race circuit for pure karting exhilaration. Monster 4X4 Thrill Ride: hang on tight while being driven through our twisting and turning forest trails. 4WD Bush Safari: our premier 4WD experience that puts the driver in control with challenges and obstacles along the way. Claybird Shooting: test your accuracy and skill using real shotguns and live ammunition. Highly trained and entertaining guides. Discover a journey packed full of challenges, surprises and excitement!



📍 193 Amoore Rd, RD2, Rotorua
☎ (07) 332 5748
✉ drive@offroadnz.co.nz
🌐 offroadnz.co.nz



Lakeview Golf and Country Club



Come and enjoy our free draining 18 hole, par 72 course. Where we have spectacular views of Lake Rotorua, Mokoia Island and surrounding countryside. Hazards include bunkers and native bush clad gorges. Lakeview has a fully stocked pro shop with electric carts, clubs and trundlers available for hire.

Competitive pricing available for large groups, corporate days, 9 or 18 hole team building challenges or head over to our covered driving range and practice your swing.



📍 704 State Highway 5, Rotorua (3min drive north of Agrodome)
☎ (07) 357 2341
✉ lakeview@golf.co.nz
🌐 lakeviewgolf.co.nz

Secret Spot Hot Tubs, Rotorua



Soak in your own private cedar hot tub of fresh forest spring water in the spectacular Whakarewarewa forest. Enjoy “Shinny Dip” foot tubs, craft beer and cider, and great coffee. Just a stone’s throw from Rotorua, hidden away in the Waipa Valley, in the heart of New Zealand’s mountain biking mecca.

45 minute time slots for hot tubs, minimum age is 5 years. We are open 7 days from 9am to 10pm. “Shinny Dips” are free with any drinks purchase.



📍 13/33 Waipa State Mill Rd, Rotorua
☎ (07) 348 4442 or 0800 737 768
✉ info@secretspot.nz
🌐 secretspot.nz



Paddle Board Rotorua



See NZ’s famous glowworms right here in Rotorua and experience the lakes district like never before. We provide SUP and kayak tours, great for all skill levels and will take you to places even the locals don’t know about. Paddle across lakes surrounded by NZ’s stunning rain forests by day and even make your way through hidden caves filled with magical constellations of glowworms by night.

Locally owned and operated, free shuttle from the Rotorua i-SITE to our stunning lake destination. Visit our website for more info.



📍 i-SITE 1167, Fenton St, Rotorua
☎ 027 669 4410
✉ info@paddleboardrotorua.com
🌐 paddleboardrotorua.com



Agrodome



New Zealand's ultimate farm experience! See baby animals all year round in our nursery, take part in the iconic farm show and enjoy a tour of a genuine real life working farm with our farm tour. Regardless of what you choose, you're guaranteed to get up close with a large number of our feathery and furry friends!

Agrodome, the ultimate farm show and farm tour experience, is open every day 8.30am to 5pm.



📍 141 Western Rd, Ngongotaha, Rotorua
☎ (07) 350 0468
✉ info@agrodome.co.nz
🌐 agrodome.co.nz



Rainbow Springs Nature Park



Nature and fun combine to create the perfect day out. See kiwi, kea, kākā, tuatara and so many more of New Zealand's native wildlife up close with a guided tour. Then experience the world's largest kiwi husbandry facility: the National Kiwi Hatchery Aotearoa. There's no better place to see kiwi in action, and learn about the extensive recovery efforts undertaken to preserve our national icon.

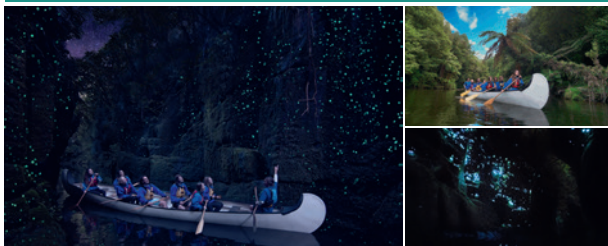
Rainbow Springs Nature Park is open daily, 8.30am to 5.30pm (last entry 5pm).



📍 192 Fairy Springs Rd, Rotorua
☎ (07) 350 0440 or 0800 724 626
✉ info@rainbowsprings.co.nz
🌐 rainbowsprings.co.nz



Waimarino GlowWorm Big Kanu



Waimarino Big Kanu offers the only 2 hour evening experience to explore Lake Rotoiti, Rotorua by evening, where glow worms begin to twinkle in their cave like the stars glowing above, for the small family group to the medium group visiting Rotorua. New for NZ 2019/2020. For the romantics, try the starlight kayaking experiences.

If experiencing a unique glow worm experience by kanu or kayak is your NZ goal enjoy the outdoor connection with Waimarino.

WAIMARINO
kayak tours

☎ 0800 GLOW WORM (456 996) or (07) 576 4233
✉ info@glowwormkayaking.com
🌐 glowwormkayaking.com



Volcanic Hills Winery & Tasting Room



Discover the amazing flavours of New Zealand's best wine growing areas, made right here in Rotorua. The Tasting Room, up the iconic Skyline Gondola, offers our delicious wines with panoramic views.

Present this advert to receive a free gift with your wine tasting – conditions apply.

Tasting Room open 11am to 6pm (last tasting at 5.15pm). You must be 18 years or older to taste or purchase wine.



📍 Top of the Skyline Gondola, 176 Fairy Springs R, Rotorua
☎ (07) 282 2018
✉ taste@volcanichills.co.nz
🌐 volcanichills.co.nz

Bibleworld Museum & Discovery Centre

An enjoyable outing for adults and children! Check out the detailed, handcrafted scale models. See over 70 ancient artefacts used in Bible times. Try out a range of hands on activities, electronic quizzes and interactive maps. Free entry!

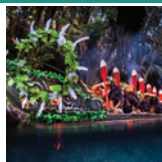


📍 1141 Eruera St, Rotorua
☎ (021) 909 842
✉ bibleworld@xtra.co.nz
🌐 bibleworld.org.nz



Mitai Maori Village

An authentic introduction to Māori culture, including traditional hangi meal, cooked in the 'earth oven'. Witness warriors paddle in an ancient canoe, a demonstration of a rich and powerful cultural performance. It will be a night to remember. Bookings essential.



📍 196 Fairy Springs Rd, Rotorua
☎ +64 (0)7 343 9132
✉ reservations@mitai.co.nz
🌐 mitai.co.nz



Mamaku Blue – Blueberry Experience

Love blueberries? Taste yummy jams, chutneys, juice, award-winning wines and liqueurs. Relax in our café while feasting on pancakes, crepes and more, or enjoy a real fruit ice cream. Orchard and winery tours available, bookings essential.



📍 311 Maraeroa Rd, Mamaku, Rotorua
☎ (07) 332 5840
✉ winery@mamakubblue.co.nz
🌐 mamakubblue.co.nz



Ki Te Hoe – Waka Paddle Rotorua

"Ki Te Hoe" means get ready to paddle, experience our waka (canoe) culture, hear our history and connection to Lake Rotorua and learn how to paddle our waka. From 29 Nov 2019, 10am, 12noon, 2pm, 4pm, \$75pp. For bookings visit: wakapaddlerotorua.co.nz.



📍 Rotorua Lakefront
☎ (027) 432 6117
✉ admin@wakapaddlerotorua.co.nz
🌐 wakapaddlerotorua.co.nz



EAT & DRINK

With a burgeoning foodie scene - fine dining or markets, delicious coffee or espresso beer stout, steambox and hangi - Rotorua will surprise those who take time to uncover its secrets.

Rotorua has an eclectic and extensive range of dining options to suit every palate – choose from more than 80 restaurants and cafes dotted in and around the city featuring everything from ethnic to contemporary New Zealand dining options. Take a stroll down ‘Eat Street’ as it’s known to locals and celebrate late into the night with a drink, a dance or a tasty cocktail.

**HOT
TIP**

For more information on where to eat and drink in Rotorua visit RotoruaNZ.com/visit

Stratosfare Restaurant & Bar



Take a scenic gondola ride up Mt Ngongotaha to enjoy Rotorua's award-winning restaurant.

Stratosfare offers an à la buffet experience including kitchen theatre, a stunning array of freshly prepared buffet and cooked to order dishes highlighting locally sourced seafood, meat and produce. Relax in the ambience featuring amazing panoramic views of the city and iconic David Trubridge lighting.



Stratosfare Restaurant opens for lunch from 11.30am and dinner from 5.30pm daily. Phone for bookings or via website.

Please share your photos with us #StratosfareRotorua

📍 178 Fairy Springs Rd, Rotorua
☎ (07) 347 0027
✉ rotorua@skyline.co.nz
🌐 skyline.co.nz



The Blind Finch Hamburgeria



Gourmet hamburgers cooked on a distinctive custom wood fire grill. The entire menu is characterised by unique flavours that are representative of popular countries. The wood fired grill introduces a subtle manuka smokiness that enhances the overall flavour of the burger. All our burgers are made from fresh quality ingredients that are cooked to order. Locations in Rotorua and Ohakune.

Eat-in or takeaway options, fully licensed bar. Open 7 days 11am to late (Rotorua).



📍 1151 Arawa St, Rotorua
☎ 0800 EAT BURGERS (328 287 4377)
✉ info@theblindfinch.co.nz
🌐 theblindfinch.co.nz

Good Eastern Taphouse



Good Eastern Taphouse is created by Andy and Prue Allan. With biking in their blood and a love for Rotorua it was the perfect place to start a Taphouse – called Good Eastern. With a great outdoor area for the mountain bikers training at the famous Redwoods, to the family restaurant for the campers at the spectacular lakes surrounding the Good Eastern, and good beer for the locals.

It is the place to be, good beer, good friends, good cheer. Open daily from 11am to late.



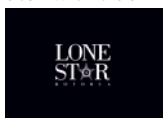
📍 Cnr Tarawera & Te Ngae Rd, Rotorua
☎ (07) 345 4476
📘 [goodeastern](https://www.goodeastern.co.nz)
🌐 goodeastern.nz

Lone Star Rotorua



It's fair to say we are pretty famous in NZ! Our legendary food has stood strong for 30 years, a true icon of NZ. Come see us at Lone Star Rotorua near Eat Street! Lone Star, the place where you find true Kiwiana on a plate! We are famous in New Zealand for serving high quality, locally sourced food. Our food is all cooked from scratch with true Lone Star love and care.

Come dine with us and download our Lone Star Loyal App for a free dessert, birthday voucher and ongoing rewards!



📍 1182 Whakaue St, Rotorua
☎ (07) 349 4040
✉ rotorua@lonestar.co.nz
🌐 lonestar.co.nz

Terrace Kitchen & Bar



Clever design and elegant décor aside, it's our food that takes centre stage. We proudly offer modern NZ cuisine for discerning diners. Also enjoy our attentive service, boutique NZ wines, bespoke cocktails, our sunny back lawn, geothermally heated porch – and the gorgeous Tonic Bar. Available for private events.

Bustling daytime café morphs into restaurant and bar after dark. Enjoy the innovative NZ cuisine and cool vibes. Open 7 days from 7.30am till late.



📍 1029 Tutanekai St, Rotorua
☎ (07) 460 1229
✉ hey@terrace.kitchen
🌐 terrace.kitchen

Gelato Mio Ice Cream



Gelato Mio Ice Cream is New Zealand's largest Gelateria. Connected to Rotorua's first cat café, it offers over 72 flavours. Gelato Mio Ice Cream believes in "small batches, big freshness", meaning the gelato is made daily on site so that it can be consumed in the best condition:

Dense and smooth with natural colour and flavour. All of the top quality ingredients are shipped directly from Italy to give your taste buds the best of the best! Exciting new flavours are frequently added to the selection to make every visit a different experience.



Gelato Mio Ice Cream even provides dairy-free, gluten-free, sugar-free and fat-free options for those who want a bit of change. Attached to Fancy Meow Cat Cafe.

📍 1210 Arawa St, Rotorua
☎ (07) 460 6868
✉ gelatomiorotorua@gmail.com
📱 [gelato.mio.rotorua](https://www.gelato.mio.rotorua)

Lime Cafeteria



A bright and lively café with a breakfast and lunch menu including such delicious temptations as peach melba waffles, spicy Boston beans and Thai risotto full of fresh flavours, plus cabinet food and also our specials board. With communal tables and extensive outdoor seating bathed in the summer sun, Lime provides a friendly atmosphere with good old fashioned table service.



Open 7.30am to 4.30pm, 7 days a week. Beautifully appointed, friendly attentive staff. Walking distance to picturesque Lake Rotorua, central shops and across the road from Spa at QE Health.

📍 1096 Whakaue St, Rotorua
☎ (07) 350 2033
✉ limecafe1096@hotmail.co.nz



Regent Room, Restaurant, Wine & Cocktail Bar



The Regent Room open daily offering breakfast, snacks, coffee to go, elegant high teas, à la carte lunch, tapas and dinner. Indulge in the degustation dinner menu 7 days a week. Dine in our outdoor courtyard or sit fireside. Experience contemporary New Zealand cuisine, an extensive wine list and elegant cocktails paired with professional, friendly service.

The Regent Room awarded Rotorua Hotel Restaurant of the Year 2013, 2015 and 2018, and Beef & Lamb Excellence Awards 2013 to 2018.



📍 1191 Pukaki St, Rotorua
☎ (07) 348 4079
✉ info@regentrotorua.co.nz
🌐 regentrotorua.co.nz



Urbano Restaurant



Café by day, bistro dining by night – serving modern, innovative contemporary cuisine. Licensed bar with comprehensive range of beer, wine, spirits and non-alcoholic beverages. Bar snacks available. Suitable for casual and intimate dining, business meetings, family gatherings and corporate functions. NZ Beef & Lamb Excellence Award. Located on Rotorua's "Motel Mile".

Opening hours: Monday to Sunday
9am to 11pm. Sunday 9am to 3pm.
Reservations recommended.



📍 289 Fenton St, Glenholme, Rotorua
☎ (07) 349 3770
✉ urbanobistro.co.nz
📱 Urbano Bistro



Scope Rotorua



Your hosts Steve and Dana welcome you to this oasis in the middle of the city, close to shops, banks and a short walk to our beautiful Lake Rotorua. Take a few minutes to recharge with our amazing Altura coffee, delectable food offerings and a cheeky glass of wine.

Winner of People's Choice Establishment of the Year Award and Finalists in the Café of the Year Award.

Relax in this café that pays a subtle tribute to NZ hunting and deer. Open 7 days. Visit our Facebook and Instagram: @scoperotorua.



📍 1296 Tutanekai St, Rotorua
☎ (07) 282 2090
✉ scoperotorua@gmail.com
📱 scoperotorua

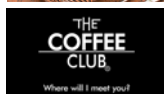


The Coffee Club Rotorua

Visit us before exploring the Redwood Forest and the Blue & Green Lakes. Good food, great service and excellent coffee in a modern, relaxed café. A wide range of breakfast and lunch meals, snacks, kids' meals and desserts with plenty of parking.



📍 Redwood Centre, 5 Tarawera Rd, Lynmore
☎ (07) 562 4846
🌐 thecoffeclub.co.nz



Third Place Café

Magnificent views over Lake Rotorua. Breakfast and lunch menus. Fresh baking, fresh salad selection, paninis and light meals. Free parking, kid's play area, outdoor dining, award winning café and friendly staff. Open 7 days from 7.30am.

📍 35 Lake Rd, Ohinemutu, Rotorua
☎ (07) 349 4852
✉ 3rdplccafe@gmail.com
🌐 thirdplacecafe.co.nz





TRAVEL KIT

ALL YOU NEED TO KNOW

Rotorua is New Zealand's most dynamic thermal area, home to spurting geysers, steaming hot springs and exploding mud pools.

The city is renowned for its 18 lakes, 145km + of world-class mountain biking trails, native and exotic forests, and the number of spas and spa treatments available.

Māori culture and the spirit of manaakitanga (warmth and hospitality) is really important to the locals, so take time to experience and understand it.

Rotorua enjoys a pleasant climate with clear crisp days in winter (June to August, 10 to 16 degrees) and plenty of sunshine in summer (December to February, 22 to 26 degrees).

Useful Māori Phrases

Here are a few useful Māori words to try and use while you're here.

- ▶ **Aotearoa** – New Zealand
- ▶ **Kai** – Food
- ▶ **Haka** – A posture dance
- ▶ **Ka pai** – Good
- ▶ **Kia Ora** – Hello / Thank you
- ▶ **Marae** – Tribal meeting place
- ▶ **Ko (your name) ahau** – I am (your name)
- ▶ **Ko (name of your river) te awa**
– My river is (name of your river)
- ▶ **Ko (name of your mountain) te maunga**
– My mountain is (name of your mountain)



Rotorua Airport

Rotorua Airport is your gateway to the Bay of Plenty region and the Central North Island. Its location in the heart of New Zealand's North Island makes it the region's most convenient airport.

Beyond Rotorua

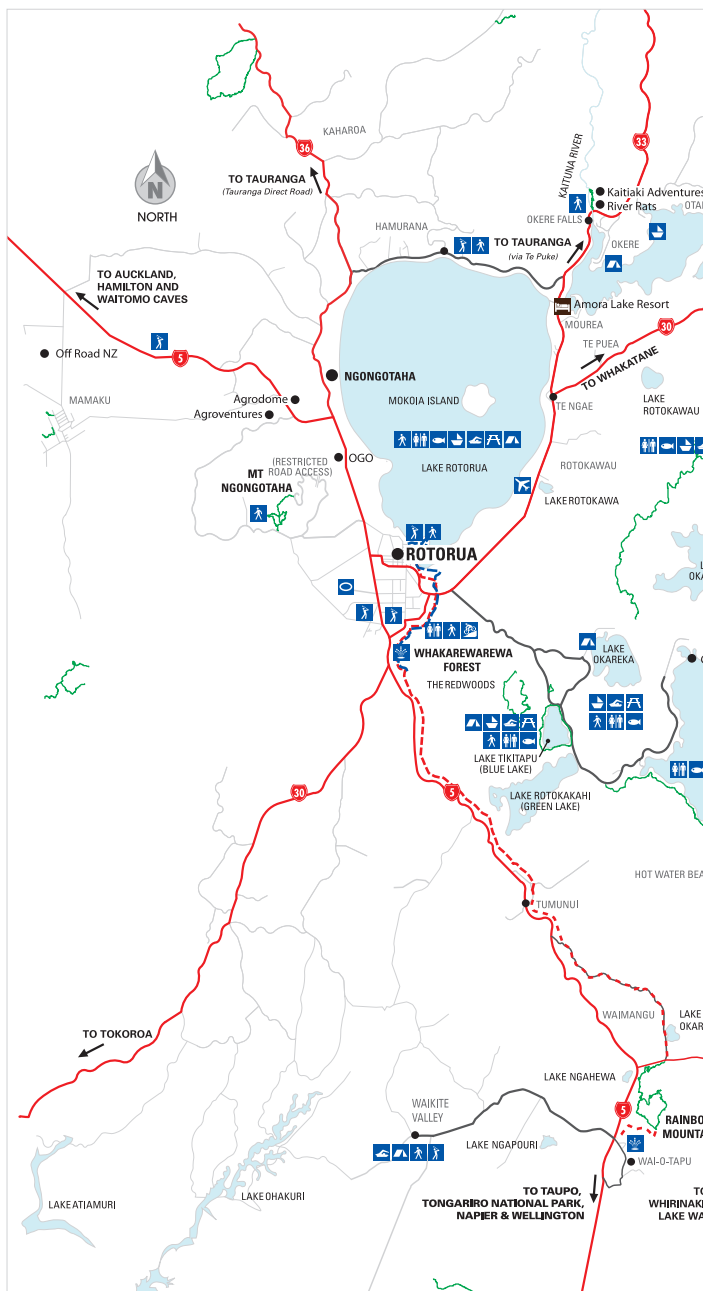
Rotorua's central location makes it handy to a number of other cities with Tauranga, Taupō and Hamilton only a one hour drive away. A little further afield are the black-sand beaches of the North Island's West Coast, the ski fields of the Central Plateau and Hawke's Bay's famous vineyards, all within a few hours drive.

Driving Travel Times

► Rotorua to Auckland	3 hours	234 km
► Rotorua to Tauranga	1 hour	86 km
► Rotorua to Taupō	1 hour	80 km
► Rotorua to National Park	2 hours	177 km
► Rotorua to Hamilton	1 hour	108 km















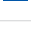
MAPS

LAKE DISTRICT



































MAP KEY

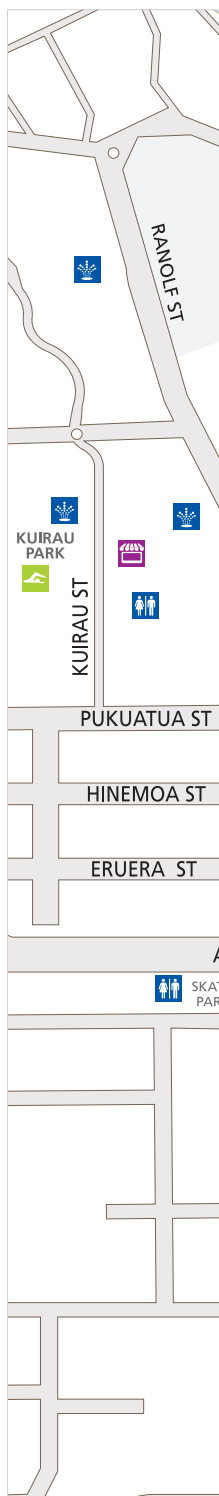
-  State Highway
-  Te Ara Ahi - Go Thermal By Bike Cycle Trail
-  Sulphur Point Walking Trail
-  D.O.C Tracks and Walks
-  Public toilet
-  Picnic area
-  Walking trail
-  Mountain bike trails
-  Fishing
-  Swimming
-  Camping
-  Golf course
-  Geothermal area
-  Stadium
-  Airport

MAPS

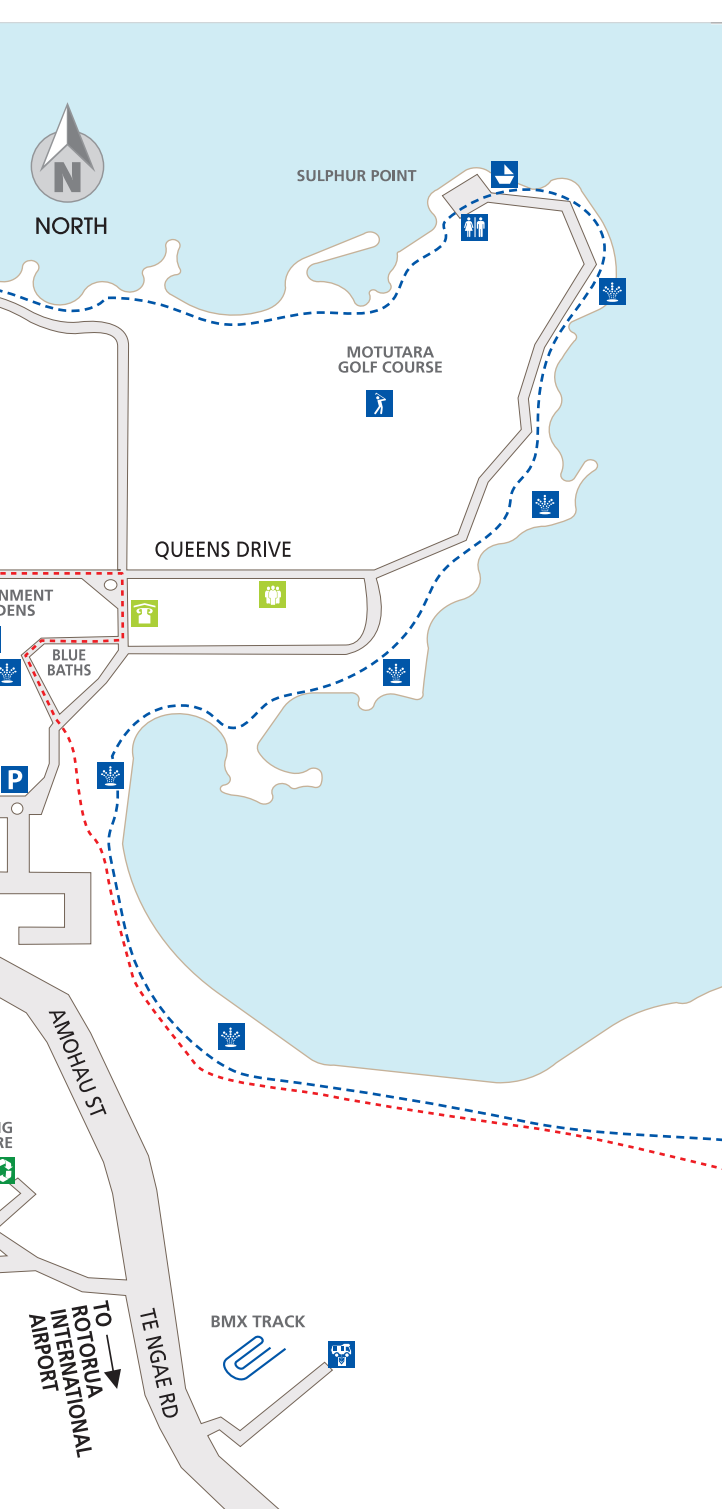
ROTORUA CENTRAL

MAP KEY

-   Rotorua Visitor Centre & i-SITE
-  Te Ara Ahi – Go Thermal By Bike Cycle Trail
-  Sulphur Point Walking Trail
-  Public toilet
-  Picnic area
-  Golf course
-  Inner City
-  Taxi stand
-  National bus transit point
-  Parking
-  Tutanekei St – free parking 1 hour
-  Pukuatua St, Hinemoa St, Eruera St – free parking for 90 minutes
-  Post Shop
-  Supermarket
-  Geothermal area
-  Eat Street
-  Healthcare
-  Boat Ramp
-  Museum
-  Police Station
-  Night Market. Every Thursday night from 5pm
-  Kuirau Park Market, Every Saturday 7am-1pm
-  Soundshell Market, Every second weekend
-  Farmers Market, Every Sunday, 9am-1pm
-  Aquatic Centre
-  Library
-  Sir Howard Morrison Performing Arts Centre (formerly the Rotorua Convention Centre)
-  Energy Events Centre
-  Official start Te Ara Ahi Cycle Trail









ROTORUA'S TRAVEL EXPERTS

The i-SITE is Rotorua's official information and booking centre and is open 7 days.

A visit on arrival to Rotorua will help you uncover the places to go that are right for you and help make your visit truly memorable. Our friendly staff can provide advice to help you plan your sightseeing, accommodation, activities and more. So make sure you pop into the i-Site to help make your Rotorua experience great.

See Rotorua's official information and booking centre for:

- ▶ Attraction, sightseeing and accommodation vouchers
- ▶ All forms of transportation bookings (bus, ferry, rail and flight)
- ▶ Rest of New Zealand itinerary bookings
- ▶ Luggage storage
- ▶ Free WiFi

A Corner Fenton
and Arawa Streets,
Rotorua

T +64 (0)7 348 5179

E info@RotoruaNZ.com



site



Visitor
Information



To help plan your holiday
check out RotoruaNZ.com

