

ROTORUA

OFFICIAL VISITOR GUIDE

2023



RotoruaNZ.com

KIA ORA

Welcome to Rotorua

With the huge range of attractions and experiences on offer, Rotorua is like a giant pick-n-mix!

There really is something for everyone. Adventure seekers, you have whitewater rafting, ziplining, mountain biking and much more to keep the adrenaline flowing. Those of you looking for a respite from the daily grind, come relax in our numerous hot pools, stroll under the canopy of an incredible forest of towering redwoods, or explore otherworldly geothermal reserves.

Rotorua is also home to authentic, awe-inspiring Māori cultural encounters that invite you to hear the stories and learn the history of New Zealand's indigenous people.

Rotorua is one of New Zealand's most diverse, exciting and accessible holiday destinations, just a three-hour drive from Auckland or a short flight from Wellington and Christchurch.

Inside this guide you'll find plenty of inspiration for your next holiday here. We look forward to seeing you soon!



RotoruaNZ



(07) 348 5179



Rotorua NZ



RotoruaNZ.com

These pages: *Experience a once-in-a-lifetime crater walk on Mt Tarawera with Kaitiaki Adventures.*

On the cover: *Explore the 60-hectare landscape at Te Puia where you'll encounter native bush, geysers and mud pools, and feel the natural power of Pōhutu Geyser – the largest geyser in the Southern Hemisphere!*

CONTENTS

2

Culture & Wellness: Māori culture and wellness therapies go hand in hand

4

Forests & Mountain Biking: Two amazing sanctuaries and ways to enjoy them

6

Lakes & Fishing: Enjoy some of our favourite lakes year round

8

Geothermal: Nature's incredible landscapes

10

Stay

17

Experience

45

Eat & Drink

50

Maps

CULTURE & WELLNESS

Māori culture and wellness therapies go hand in hand

The Māori culture and the geothermal landscape of Rotorua are very much entwined. In fact, we have the first Māori settlers of Rotorua to thank for our incredible array of Māori cultural experiences as well as some of the ways we look after our health and wellbeing.

In the 1880s, it was the local Māori women who guided the manuhiri (visitors) that travelled from around the world to soak in the mineral-rich hot waters flowing over the famous Pink and White Terraces. Ever since, we've been bathing in natural spring-fed hot pools that abound in Rotorua.

We're lucky to have quite a variety of hot pools to enjoy, from rural to secluded to nearly the middle of the city.

Hell's Gate is our most active geothermal reserve and the only place in New Zealand where you can soak in a natural, mineral-rich, outdoor mud bath used for generations by Māori to ease joint and muscle pain.

For a beautiful drive to a lush country setting, head to **Waikite Valley Thermal Pools**, about 20 minutes south of town.

At **Secret Spot Hot Tubs**, you reserve your own freshwater cedar hot tub and can enjoy tub-side service to top up any drinks.

Polynesian Spa, located in the city and alongside Lake Rotorua, is internationally acclaimed. Besides offering 28 pools with gorgeous views to choose from, their luxurious spa treatments are next level zen.



Opening in early to mid-2023, **Wai Ariki Hot Springs and Spa** will offer a luxury 5-star cultural spa and wellness experience on the shores of Lake Rotorua. Guests can choose from various traditional spa and bathing therapies that are uniquely inspired by Māori wellness and wellbeing approaches.

For more in-depth knowledge and understanding of Māoritanga (Māori culture, practices and beliefs) and tikanga (customs), a guided tour of **Te Puia** and the **New Zealand Māori Arts and Crafts Institute** is the perfect place to start. This world-famous attraction combines Māori history, art and stories with a very close encounter with the Southern Hemisphere's largest active geyser, Pōhutu.

Te Pā Tū, formerly known as Tamaki Māori Village, has created a new evening experience that immerses guests in the culture through performance, stories and rituals, and of course kai (food), which is an integral part of any special gathering for Māori people.

At **Mitai Māori Village**, guests are greeted by the fierce Māori warriors making their way down the Wai-o-whiro stream in a traditional waka (canoe). An amazing sight to see and a fitting start to an incredible evening of traditional entertainment, education and an authentic hāngī dining experience.

FORESTS & MOUNTAIN BIKING

Two amazing sanctuaries and great ways to enjoy them

As different as they are, two favourite Rotorua forests share some similarities as well.

Both are breath-taking places and loved by the thousands of locals and non-locals who visit each year. Both bathe their guests in natural phytoncides, airborne chemicals that researchers say help boost our immune system – so they're great for us to spend time in!

Where Whakarewarewa Forest is only a 10-minute drive from the Rotorua city centre (don't worry you'll still feel a world away!) and accessible by anyone, any day, any time, Dansey Road Scenic Reserve is a bit more out of the way and mainly enjoyed by guests of the award-winning **Rotorua Canopy Tours** for amazing ziplining adventures.

Whakarewarewa Forest

Known locally as The Redwoods, we love to share this special place with visitors.

Walking/running trails

Stroll or give the lungs a workout along trails that weave their way amid 75-metre-tall California redwoods and native understory that make this a soothing place to unwind and fall in love with nature. The variety of signposted walks means there's a trail for nearly any age and ability, including some that are wheelchair and pushchair/stroller accessible. Magnificent panoramic views await those who head uphill.

Get a bird's eye view

When you arrive, you can't miss the network of eco-friendly suspended bridges and platforms that make up **Redwoods Treewalk & Nightlights** and take you up to 20 metres above the forest floor. This self-guided tour allows you to encounter the forest in a much more intimate way. Visit during



the day and again at night for two completely different experiences!

Mountain biking

If you're looking for a hit of adventure, the forest is also known for what mountain bikers call "dirt gold" and is home to New Zealand's newest Cycle Trail Great Ride. Expert riders from around the globe agree that mountain biking doesn't get any better than in Rotorua – but don't take that to mean the trails are only for pro riders. The network of scenic trails has been purpose-built to ensure there's something for everyone, including first-timers and children.

If you're unsure on how to get started, see the folks at **Mountain Bike Rotorua** or **Planet Bike** who are happy to offer advice. They also have trail maps available, bikes for hire and guides to book.

Thanks to the local iwi land owners, Whakarewarewa Forest is always free to visit and our volcanic soil means you can ride in all weather conditions.

Dansey Road Scenic Reserve

Here stands one of the most intact native eco-systems you'll find anywhere in New Zealand. Its



trees have stood for more than 1,000 years, providing homes to countless rare species of native birds, insects, reptiles and fungi.

Soar through the trees and experience New Zealand's

ancient forest like never before – in two award-winning zipline adventures with **Rotorua Canopy Tours**. You'll also learn about the award-winning tour company's dedication and massive success in regenerating the native bird life here through tracking and trapping introduced pest species.



LAKE & FISHING

Enjoy some of our favourite lakes year round

📍 Lake Rotoiti

Welcome to the Lakes District of the North Island! The 18 sparkling lakes dotted around Rotorua, and the numerous ways to enjoy them, make this a water lover's paradise. Enjoy a refreshing swim. Soak in hot pools along a lake's edge. Explore on vessels ranging from stand-up paddle boards to jet boats. Land a trout – or five – from a lake with the highest catch rate in the country.

While 17 of the lakes are open to the public, here are a few of our favourites, all of which are fishable and free to utilise.

Lake Rotorua

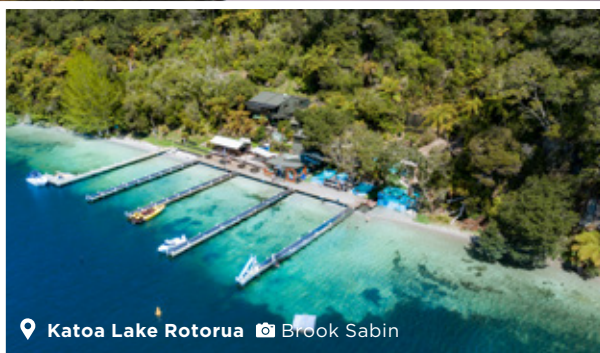
Lake Rotorua is our region's largest, formed from the crater of a large volcano. If you haven't got your own boat, try **Katoa Lake Rotorua** jet boat experiences which depart from the beautifully redeveloped **Lakefront Boardwalk** and playgrounds. **Volcanic Air** heli and floatplane tours depart from here, too.

Lake Rotorua is the most productive trout fishery in New Zealand, with both rainbow and brown trout in large numbers, making it extremely popular for fishing.

Enjoy the lake another way at **Polynesian Spa** where half of their 28 hot pools are situated along the lakeshore, providing gorgeous views across to Mokoia Island while you soak.

Lake Rotoiti

Connected to Lake Rotorua by the Ohau Channel, Lake Rotoiti offers plenty of great swimming spots and boat ramps. **Rotorua Trout Guide** hosts fishing charters in all three of these waterways as they're great for catching good-sized trout.



Rotoiti is home to secluded hot pools accessible only by boat or air. Make a real splash by arriving via a **Volcanic Air** floatplane tour or **Katoa Lake Rotorua** jetboat, cruise over in your own boat, or arrive via **Pure Cruise**'s Rotoiti Water Shuttles or eco-friendly, all-electric Airstream Project.

Lake Tikitapu

Lake Tikitapu is one of the best-known recreational lakes in our district, and less than 15 minutes' drive from the city centre. Also known as Blue Lake, it offers everything you need for a lovely day out: crystal-clear water, sandy beach, picnic spots, sheltered barbeques, playground, boat launch, plenty of healthy trout, and public toilets.

Lake Ōkāreka

Nearby is Lake Ōkāreka. Head to Boyes Beach and set up for the day. With a large sandy beach, barbeques and picnic tables in the shade, and a great playground, it's the perfect spot to enjoy fun in the sun.

Ōkāreka means "the lake of sweet food", which is apt for it keeps anglers happy with high numbers of quality fish, especially the large population of rainbow trout. It's also a gentle lake, so very suitable for family fishing.

Lake Tarawera

Less than 10 minutes from Tikitapu you'll find this lake at the foot of majestic Mt Tarawera. It's one of the best places for astro-photography from the end of the jetty. From here, launch your boat, book a fishing charter with **Cruise And Fish**, or catch a pre-booked water taxi through **Totally Tarawera** to the secluded Hot Water Beach where a hot spring-fed stream trickles into the lake.



GEO THERMAL

Nature's incredible landscapes

📍 Wai-O-Tapu

Spouting geysers, bubbling mud pools, steaming vents and boiling lakes are just about everywhere in and around Rotorua.

Checking out the spectacular geothermal parks and reserves – each one so different from the others – is a must-do. These incredible places provide the most amazing scenes to photograph and are great for adventure seekers too.

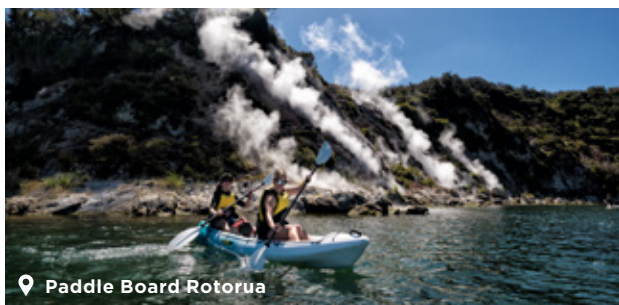
Two geothermal reserves, **Kuirau Park** and **Sulphur Bay Wildlife Refuge**, are located in town and free to visit on foot or by bicycle.

Meandering paths through Kuirau Park take you past mud pools and hot pools. The natural hot pools here are definitely not for bathing – they're far too hot – but you're invited to sit a spell and dangle your feet in the free foot bath.

Along the shores of Lake Rotorua, you'll find Sulphur Bay Wildlife Refuge. This amazing 145-hectare volcanic area takes you past steam vents, boiling mud pools and strangely coloured streams. Sulphur Bay is home to unique plant life and birds who've adapted in order to survive in this harsh environment, including the nationally threatened New Zealand dabchick, banded dotterel, and black-billed gull.

Also located in town, **Whakarewarewa - The Living Māori Village** allows you to experience the Whakarewarewa Valley Reserve on e-bikes from **Electric Bike Rotorua**. This is a great activity for families, couples, and groups up to 10, and for nearly all levels of fitness.

Possibly one of the most photographed geothermal attractions is **Wai-O-Tapu Thermal Wonderland**, famous for Lady Knox Geyser and its lakes and pools of electric colours and rising steam.



Another steamy place to treat the senses is **Waimangu Volcanic Valley**. Choose from a range of self-guided nature walks and hiking trails through pristine native bush, past volcanic craters, enormous hot water springs, beautiful geothermal features, rare and unusual plant life, brilliantly coloured microbiology and an array of birds.

Add on a relaxing cruise across beautiful Lake Rotomahana to see even more geothermal activity, with full commentary by your skipper.

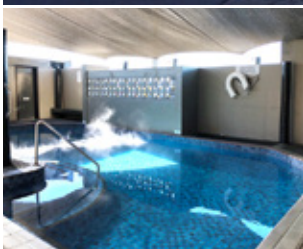
For a more active and intimate way to enjoy this lake, book a Steaming Cliffs Kayak tour with **Paddle Board Rotorua**. In two-person kayaks, this guided, history-filled tour takes you along the shoreline and over the spot where the famous Pink and White Terraces were buried during the eruption of Mt Tarawera.

Back on foot, follow in the steps of New Zealand's first tourists, and uncover even more stories of the Tarawera eruption during The Round Trip at Waimangu Volcanic Valley. This full-day tour includes a guided walk through Waimangu, boat cruises on lakes Rotomahana and Tarawera, and a visit to the **Buried Village of Te Wairoa**.

No Rotorua adventure is complete without walking the summit of Mt Tarawera. **Kaitiaki Adventures** offers both a half-day and full-day guided Mt Tarawera Volcanic Crater Experience that include 360-degree views and optional scree run into the heart of the volcano. This culturally steeped expedition encompasses the unique environment and a deep dive into the history of one of New Zealand's pristine natural heritage sites.

If you've got limited time but you're still keen for an amazing view, check out the 2.5km walk up **Rainbow Mountain**. The summit is less than two hours by foot and includes two crater lakes, and mountain ranges and lakes in all directions. Access is free, and mountain biking (uphill only) is also permitted here.

Sudima Lake Rotorua



Sudima Rotorua sits on the shore of Lake Rotorua with views over the water. This well-appointed home-away-from-home is across the road from Polynesian Spa and just a short stroll from the town centre. It has all the facilities you'd expect from a 4-star hotel, as well as a few that set it apart, including a kids play area, geothermally heated swimming pool and optional Māori cultural performance and hāngī buffet dinner. With its relaxed fit-out, Sudima Rotorua represents 4-star style, comfort and value and is the perfect location to explore the world-renowned wonders of Rotorua.

SUDIMA
HOTELS

Sudima Lake Rotorua has a relaxed atmosphere and is ideal for a fun filled couples, group or family getaway.

- 📍 1000 Eruera Street, Rotorua
- ☎ 0800 783 462
- ✉ reservations@sudimahotels.com
- 🌐 sudimahotels.com



Prince's Gate Boutique Hotel



Feel the ambience of early New Zealand hospitality in central Rotorua's historic boutique hotel. Uniquely decorated fully serviced rooms, award-winning cuisine and the elegant Duke's Bar & Restaurant. Enjoy high teas, hot pools and easy parking.

On-site restaurant, high tea, bar, guest lounge, conference facilities, thermally heated swimming pools, free WiFi and Sky TV. Guest laundry and off-street parking and function rooms.



📍 1057 Arawa Street, Rotorua
☎ (07) 348 1179
✉ info@princesgate.co.nz
🌐 princesgate.co.nz

Black Swan Lakeside Boutique Hotel



Luxurious accommodation on the edge of Lake Rotorua. Rose gardens, swimming pool, sandy beach, private jetty. Nine rooms beautifully appointed with stunning views over the lake or gardens. Black Swan offers guests the opportunity to dine with fabulous views of Lake Rotorua.

Only a 5 minute drive from Rotorua or 20 minutes from Rotorua Airport. Business or pleasure, experience exceptional lakefront living, luxury accommodations, exquisite dining and the finest amenities.



📍 171 Kawaha Point Road, Rotorua
☎ (07) 346 3602
✉ info@blackswanhotel.co.nz
🌐 blackswanhotel.co.nz

Koura Lodge



A private lawn-to-lakefront retreat, nestled amongst subtropical gardens on Lake Rotorua. Choose from a range of luxurious lodge rooms and suites, and a two-bedroom family apartment, all with private ensuites. All 10 rooms offer spectacular views, with a maximum of 20 guests, ensuring peaceful seclusion. Facilities and activities include a sauna, outdoor shower and hot-tub, canoes, fishing, and float plane excursions.

Accommodation just five mins drive to the city centre, dozens of restaurants and many of Rotorua's world famous attractions.



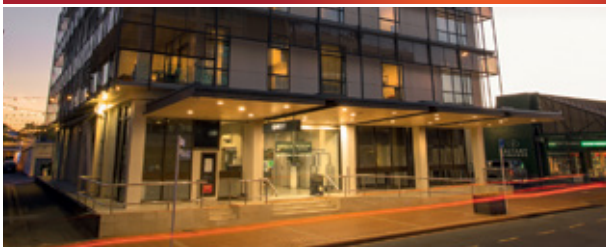
📍 209 Kawaha Point Road, Rotorua

☎ (07) 348 5868

✉ stay@kouralodge.co.nz

🌐 kouralodge.co.nz

Quest Rotorua Central



Located in the heart of Rotorua, Quest Rotorua Central offers fully self-contained apartments. We are a short walk to Rotorua's shopping and restaurant precinct, Energy Events Centre and other city attractions. Ideal accommodation for business and leisure visitors alike.

All apartments offer king beds, LED TVs, dedicated work stations, air-conditioning and free unlimited high speed WiFi. Book direct for the best available rates.



📍 1192 Hinemoa Street, Rotorua

☎ (07) 929 9808

✉ host@questrotoruacentral.co.nz

🌐 questrotoruacentral.co.nz



Jet Park Hotel



Jet Park Rotorua is a family run hotel, with an outstanding team dedicated to personal and caring service. Centrally located, our hotel is the perfect base for exploring Rotorua. Our knowledgeable staff are happy to provide suggestions on activities and experiences for you to enjoy.

Jet Park Hotel Rotorua offers 63 rooms comprising standard, superior, suites, and apartments. Get in touch with our reservations team to make a booking.



📍 237 Fenton Street, Rotorua
☎ 0800 538 466
✉ reservations@jetpark.co.nz
🌐 jetparkrotorua.co.nz

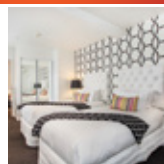


NEW ZEALAND
OWNED & OPERATED



Regent of Rotorua

Refreshingly original, the Regent marks the epitome of chic accommodation in the city. A restorative mineral pool, heated outdoor pool, a fabulous location and welcoming staff transform this boutique hotel into a sparkling gem that stands apart from the crowd.



📍 1191 Pukaki Street, Rotorua
☎ (07) 348 4079
✉ info@regentrotorua.co.nz
🌐 regentrotorua.co.nz



REGENT
OF ROTORUA

VR Rotorua Lake Resort

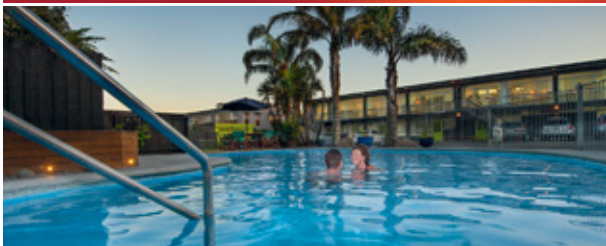
Best views in town, close to the airport and a host of activities, this is the perfect setting to do as much or as little as you like! Check out our daily specials and packages on our website. All rooms with views over Okawa Bay or the surrounding gardens.



📍 366 State Highway 33, Rotorua
☎ (07) 362 4599
✉ rotorua.reservations@vrhotels.co.nz
🌐 vrrotorua.co.nz



Aura Accommodation



Firmly establishing itself as a Rotorua favourite, Aura Accommodation has all your needs covered. Centrally located, heated outdoor pool, hot thermal pools and a strong focus on sustainability. Crack open a beer while on the BBQ, let the kids (or big kids) loose on the trampoline and lawn games or take our free scooters out for an explore.

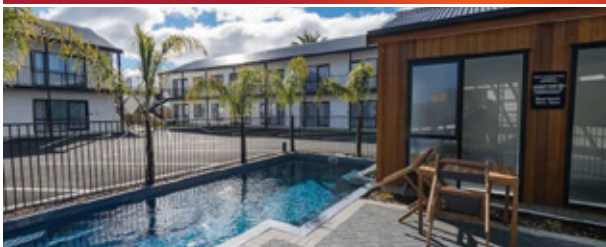
Offering a range of geothermally heated rooms to suit all travellers plus free WiFi, Netflix & Sky TV.



📍 1078 Whakaue Street, Rotorua
☎ (07) 348 8134
✉ info@aurarotorua.co.nz
🌐 aurarotorua.co.nz



Rotorua International Motor Inn



One of Rotorua's newest tourism accommodation options, providing a warm and caring service. Recently renovated with brand new furniture. All ground floor studios, one-bedroom and two-bedroom apartments include a private courtyard and spa pool. Interconnecting units are available to accommodate large groups.

50-inch Smart TV and 50+ Sky channels in all rooms. Heated outdoor pool, gym and sauna room also available daily for guest use.



📍 2 Monokia Street, Rotorua
☎ (07) 282 2051
✉ info@rotoruumotorinn.co.nz
🌐 rotoruumotorinn.co.nz

Rotorua Family Holiday Park



Our Kiwi owned and operated holiday park for over 16 years is in a quiet location with no sulphur odour. We are a short 3 minute drive north of central Rotorua and the closest holiday park to many of Rotorua's major attractions.

At our holiday park we offer various accommodation, motels, family units, self contained units, cabins, tent and campervan sites. Facilities include playground, swimming pool (seasonal), spa pool, BBQ area, TV room and fishing tackle shop. Free unlimited WiFi and showers. Discounts available for many of Rotorua's activities and attractions.

Our staff are happy to assist with local information.

Prices from \$36.00 per night for 2 people for powered site and \$87.00 per night for 2 people for units.

Phone or email for your reservation. Check our reviews (Campermate, Tripadvisor, Rotorua Family Holiday Park).

📍 22 Beaumont Road, Ngongotahā, Rotorua

☎ 0800 574 289 or (07) 357 4289

✉ stay@rotoruafamilypark.co.nz

🌐 rotoruafamilypark.co.nz

Blue Lake Top 10 Holiday Park



We are Rotorua's only TOP 10 Holiday Park located on the picturesque and stunning Blue Lake. Choose from our lake-view motels to self-contained units, or kitchen and standard cabins. The park offers quality accommodation to suit any sized group and budget. Walk across the road for a swim in Lake Tikitapu or take a short 5 minute drive to Lakes Okareka or Tarawera.

The famous Rotorua mountain bike tracks are on our doorstep.



📍 723 Tarawera Road, Blue Lake, Rotorua
☎ 0800 808 292
✉ info@bluelaketop10.co.nz
🌐 bluelaketop10.co.nz

Rotorua Thermal Holiday Park



Situated in relaxing park-like grounds, stay and enjoy free hot pools, a heated pool, tennis courts and a cricket pitch. Tent sites, large powered sites, dorms, cabins, self-contained units and two bedroom motels. Close to the renowned mountain biking tracks. Ideal for families, mountain bikers, group bookings, school trips and sports groups. Pets welcome by prior arrangement. Discounts available to attractions/activities for guests.

Only a few minutes from the city centre, within walking distance to the Pōhutu Geyser.



📍 463 Old Taupo Road, Rotorua
☎ (07) 346 3140
✉ info@rotoruathermal.co.nz
🌐 rotoruathermal.co.nz



Secret Spot Hot Tubs



Soak in cedar hot tubs surrounded by native ferns! Situated beside the breath-taking Whakarewarewa Forest, nestled in the heart of New Zealand's mountain biking mecca, we are the perfect spot to relax after your adventures.



Enjoy tub-side bar service at the push of a button, “Shinny Dip” foot tubs or explore our unique BaseCamp café and bar with craft beer, cider and wine. Have a bite to eat, play lawn games and gather around our outdoor campfires.

45 minute time slots for hot tubs, minimum age is 5 years. We are open 7 days from 9am-10pm. “Shinny Dips” are free with any drinks purchase.

📍 13/33 Waipa State Mill Road, Rotorua
☎ (07) 348 4442 or 0800 737 768
✉ info@secretspot.nz
🌐 secretspot.nz



Te Puia - Guided Experiences



Discover one of New Zealand's most magnificent geothermal wonderlands...

For generations, Te Puia has welcomed manuhiri (visitors) from all over the world and offers hours of fun for the whole whānau.

Day and Night Guided Experiences

Our most popular guided day experiences explore the unique beauty of our geothermal valley, ending at the base of the powerful Pōhutu Geyser. Get closer than ever before to the kiwi bird in our Kiwi Conservation Centre and marvel at the endlessly active mud pools.

Be guided through the New Zealand Māori Arts and Crafts institute, where masters of the traditional Māori art form are based, to teach the next generation of carving and weaving.

We now have an added Cultural Performance (Haka) option available for guests visiting during the day. Immerse yourself into the customs and traditions of Māori or book Te Pō - the full Te Puia evening experience which includes a full buffet, concert and evening tour.



Geyser By Night

Until now, the magic hidden within Te Puia has remained a secret that only Mother Nature has truly been exposed to. For the first time, the geothermal valley is revealed under night skies, providing a multi-sensory experience that cannot be replicated anywhere else in the world.



TE PUIA

ROTORUA, NEW ZEALAND

*E kore au e ngaro te purapura
i ruia mai i Rangiaitea*

Pātaka Kai Restaurant, Bar & Café

Your visit to Te Puia wouldn't be complete without experiencing our world-famous buffet.

Please visit our website for available time slots to book your guided tour, buffet meal or dining experience. Open daily. Bookings are essential.

📍 Hemo Road, Rotorua
☎️ (07) 348 9047 or 0800 TE PUIA
✉️ reservations@tepuia.com
🌐 tepuia.com



Skyline Rotorua



Famous for a reason, Skyline Rotorua is your ticket to an unforgettable holiday.

Begin your day with a tranquil Gondola ride up Mt Ngongotahā overlooking Lake Rotorua then wind your way down via the Luge or if you prefer to descend by mountain bike, weave your way through one of the newly created park trails.

Get the adrenalin pumping even more on the Zoom Zipline and the Sky Swing. Or for a more relaxed approach take a stroll through the stunning nature trails with informative and interactive panels along the way.

Left feeling a little peckish? Head to the Market Kitchen or the Stratosfare Restaurant & Bar to fuel up again. While you're there, why not also pop into the Volcanic Hills Wine Tasting Room while the kids explore the Jelly Belly Gallery and Store.

The Skyline Rotorua complex is just 5 minutes' drive from central Rotorua, sitting atop Mt Ngongotahā providing unsurpassed views of New Zealand's coolest hot spot.

This is an all-weather must-do attraction suitable for all ages.



With over 14 months of construction, we are proud to present the latest Luge track additions to Skyline Rotorua, Ultra, Twister and the Legend! Four brand new corkscrews, over 12,000 native trees planted, four tunnels lit up with 430m of LED strip lighting, and so many more twists and turns.



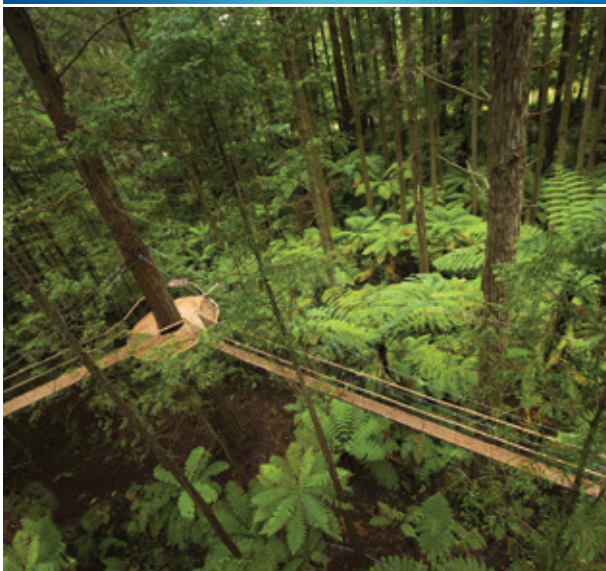
The Night Luge has also been transformed with 170 coloured LED lights and with the addition of these new tracks our Luge now boasts a total track length of 7.3 kilometres - the longest in the world!

Check the website for the most up-to-date hours of operation. Just five minutes drive from central Rotorua. Please share photos with us: #Skylinerotorua

📍 178 Fairy Springs Road, Rotorua
 ☎ (07) 347 0027
 ✉ rotorua@skyline.co.nz
 🌐 skyline.co.nz/rotorua



Redwoods Treewalk & Nightlights



The Treewalk and Nightlights is a Rotorua must-do. A nature eco experience like no other. A peaceful haven for you to discover and explore nature above the forest floor. Surround yourself with these long living giants, native flora and fauna including sweeping silver ferns.

At night the enchanted forest comes alive with Redwoods Nightlights. An immersive experience ensures you discover the forest in a whole new light. See the award winning lanterns by design champion David Trubridge in nature's gallery. We say day-time for nature and night-time for magic.



Redwoods
Treewalk®

Open 9am to late daily. Only 5min from Rotorua city centre. Allow 40 minutes for the 700 metre suspended bridge walk. Visit our website for more information and tickets.

📍 1 Long Mile Road, Whakarewarewa, Rotorua
✉ info@treewalk.co.nz
🌐 treewalk.co.nz
📘 RedwoodsTreewalk



Redwoods Altitude



Inspired by constant visitor feedback to go higher up the trees, the Treewalk team are pleased to launch their thrilling tree top guided adventure Redwoods Altitude.

Pull on your safety harness, step your way up the six-story suspended stair case into the forest canopy itself. From here your “Indiana Jones” jungle themed bridge journey begins, with swing bridges, Hercules net, plank & vine bridges and for even more fun includes three flying foxes & an optional 22 meter jump to finish.

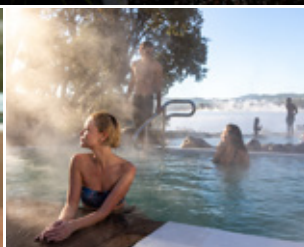
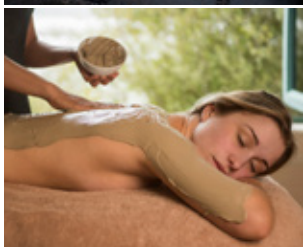


Open daily. Allow 2.5 hours in total. Located beside Redwoods Treewalk. Height, weight and health restrictions apply for this new adventure. Bookings essential and can be made online at RedwoodsAltitude.co.nz

📍 1 Long Mile Road, Whakarewarewa, Rotorua
✉ altitude@treewalk.co.nz
🌐 redwoodsaltitude.co.nz
📘 RedwoodsAltitude



Polynesian Spa



Polynesian Spa is a world-leading, historic hot springs and luxury spa retreat on the shores of Lake Rotorua. Geothermal waters nourish your skin and signature day spa therapies and mud treatments restore body, mind and soul. The contemporary on-site café 88Ra, serves authentic gelato, delicious juices, smoothies and great food. Finish off with some retail therapy in our Spa Essentials Gift Shop. Polynesian Spa has 28 geothermal mineral pools fed by two distinct springs. The heritage protected and mildly acidic Priest Spring relieves tired muscles, aches and pains while the alkaline waters of the Rachel Spring nourish your skin. There are three public pool areas - Pavilion Adult, Family and Deluxe Lake Spa, as well as two private pool areas to choose from. Temperatures range from 36°C to 41°C.

Open 7 days and all Public Holidays, 9am - 11pm.

📍 1000 Hinemoa Street, Rotorua
☎ (07) 348 1328
✉ info@polynesianspa.co.nz
🌐 polynesianspa.co.nz



Rotorua Canopy Tours



So much more than the ziplines! Our award winning canopy experiences take you soaring on an epic eco-adventure like no other high above New Zealand's ancient rainforest. Storytelling guides bring the restored forest to life along a network of ziplines, suspended swing bridges, treetop platforms and forest trails as you immerse yourself in this 1,000 year-old native eco-system. Come face to face with native birds and be inspired as you become part of one of New Zealand's leading eco restoration projects.



Ultimate and Original Canopy Tours depart throughout the day and in all weather. Bookings are highly recommended. Suitable for ages 6+ years. 120kg weight limit does apply.

📍 147 Fairy Springs Road, Rotorua
☎ (07) 343 1001 or 0800 22 66 79
✉ hello@canopytours.co.nz
🌐 canopytours.co.nz



Fancy Meow Cat Café



Welcome to Fancy Meow Cat Café, the very first cat café in Rotorua and the only cat café in New Zealand with purebred cats! Our cats and kittens are always grateful for play and cuddle time with our visitors. Come in for a visit to relax, decompress and enjoy your break with our furry friends.

A menu of hot and cold drinks are available for you to enjoy while you unwind. With two flat-screen TVs, free Wifi, air conditioning and massage chairs, we want to create a home-like environment for you and your family and friends. We even have fun building blocks for the kids to play with! Come experience an unforgettable memory with over 25 fur balls!

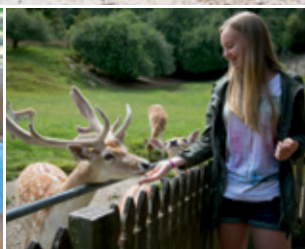


Located in the heart of the Rotorua CBD, attached to Gelato Mio Ice Cream. Check website for opening hours. Online booking available at fancymeowcatcafe.co.nz.

- 📍 1210 Arawa Street, Rotorua
- ☎ (07) 460 6868
- ✉ info@fancymeowcatcafe.co.nz
- 🌐 fancymeowcatcafe.co.nz



Paradise Valley Springs Wildlife Park



Interact with and hand-feed New Zealand's wild animals, trout, native birds and friendly farm critters. See native eels, our waterbird wetland and walk through kea aviary. Taste pure water straight from our spring, and take our elevated treetops walk through mature New Zealand bush



Get close to the 'Pride of Paradise', our pride of African lions who are fed daily at 2.30pm.

Open every day of the year from 8am to dark with last entry at 5pm.

Lion pride feeding 2.30pm, kea and possum feeding 3pm every day.

10 minutes from Rotorua city.

📍 467 Paradise Valley Road, Rotorua
☎ (07) 348 9667
✉ info@paradisev.co.nz
🌐 paradisevalleysprings.co.nz



Hell's Gate - Geothermal Reserve & Mud Spa



Witness a land born of myth and legend where Rūaumoko heats the earth from a world below, boiling mud and billowing steam into the sky above. Journey through native bush that opens up into geothermal landscapes, and bathe in sulphurous mud and waters that revitalise mind, body and soul. Experience New Zealand's only geothermal mud spa as it excites and soothes, just as it has done for centuries.



Opening days and hours may vary. Please refer to our website for operating hours, guided tour and shuttle information. Bring towels and swimwear or hire on-site. Follow us for inspiration at @HellsGateNZ

📍 351 State Highway 30, Tikitere, Rotorua
☎ (07) 345 3151
✉ info@hellsgate.co.nz
🌐 hellsgate.co.nz



Waimangu Volcanic Valley



We connect people with the beating heart of the world's youngest geothermal valley, its unique history and legacy. We share how the world began. Waimangu is home to the now hidden Pink and White Terraces. Immerse yourself in the stories of the 1886 Mount Tarawera volcanic eruption, its people and the resulting dramatic landscape changes that created this unique part of the world.



Explore on foot with a variety of self-guided nature walks, hikes and lake cruises, interpretive signage, technology, map guides and human-to-human interaction. Immerse, imagine and feel the unique geothermal features, regenerating forest, bird life, botany and culture and legacy of the Waimangu Volcanic Valley.

📍 587 Waimangu Road, Rotorua
☎ (07) 366 6137
✉ nature@waimangu.co.nz
🌐 waimangu.co.nz



Rotorua Heritage Farm – 3D Trick Art Gallery & The Farm Tour



Art, not as you would expect it to be!
A perfect place to get memorable
photos for your family and friends.
Where else can you find yourself
climbing mountains, riding alpacas,
standing stranded on an ice edge,
trying to stop yourself becoming a
crocodile's dinner then flying away in
a hot air balloon, all in one day?
3D Trick Art Gallery is the place to be.

The farm is educational for all ages, as the Farm Tour does
not only allow visitors to interact with the farm animals, they
also can enjoy getting up close and personal with the animals
by feeding and patting them. Listen to the stories from your
guide as you go around the farm.



Check out our website for operating times.

📍 171 Fairy Springs Road, Rotorua
☎ (07) 349 0920
✉ info@3dtrickart.co.nz
🌐 3dtrickart.co.nz



Waikite Valley Hotpools



Bathe in 100% natural clear geothermal waters, direct from the Te Manaroa Spring, New Zealand's largest single source of natural boiling water. Bathing temperatures of between 36 and 40 degrees are offered across six bathing pools. Private Pools are also available, bookings recommended. Stay the night in the adjacent camping ground, powered and non-powered sites available.



Situated 36km south of Rotorua on SH5. The ideal place to relax all year round. Experience The Living Waters of Waikite Valley Thermal Pools. Open 7 days from 10.30am to 8.00pm.

📍 648 Waikite Valley Road, Rotorua
☎ (07) 333 1861
✉ info@hotpools.co.nz
🌐 hotpools.co.nz



Kaitiaki Adventures



Kaitiaki Adventures is your professional whitewater rafting, sledging and guiding company. Based on the Okere section of the Kaituna River, we mix the amazing scenery of the river with grade 3 and 5 rafting/sledging experiences, including the world's highest commercially rafted waterfall. Alternatively, our fully guided Mt Tarawera walking experience encompasses the unique landscape and history of the area. With unmatched scenic vistas and 360 panoramic views this experience is ideal for all ages. Kaitiaki Adventures offers New Zealand culture blended with fun and whitewater adventure.



Experience the Kaitiaki difference today!
Open 7 days a week.

📍 1135 Te Ngae Road, Rotorua
☎ 0800 338 736
✉ info@kaitiaki.co.nz
🌐 kaitiaki.co.nz



Adventure Playground Rotorua



Located just 5 minutes' drive from Rotorua City, Adventure Playground has grown over eight years into a highly rated multi activity tourist destination offering fully guided buggy tours, horse treks, claybird shooting, archery, airsoft and paintball. We help you explore over 750 acres of New Zealand native bush travelling on one hundred year old forestry trails reaching the highest views in Rotorua.



Adventure Playground is a multi activity destination located in the heart of Rotorua's tourism mecca. All activities take in the spectacular scenery overlooking Lake Rotorua and our beautiful native bush set on Mount Ngongotahā. Please book to avoid disappointment.

📍 451 Ngongotahā Road, Rotorua
☎ 0800 782 396
✉ info@adventureplayground.co.nz
🌐 adventureplayground.co.nz

ZORB Rotorua



Discover FOUR different ball rolling tracks – the world's longest zig-zag Sidewinder Track, the smooth 'n' fast double Straight Track, MEGA Track -the longest, fastest and steepest track in all the land, and the newest track; Big Air, with sweeping corners and drops! Think of it like a giant water slide, 40 litres of water (warm in winter, cool in summer) with no tumbling involved, just full on belly laughs from top to bottom. To this day, Rotorua is the **ONLY** location in New Zealand where you can experience this amazingly fun and bizarre bucket list activity.

ZORB™

5 minutes' drive north of Rotorua City.
Suitable for all ages from 5 years of age.
Check our website for up to date opening hours.

📍 525 Ngongotahā Road, Fairy Springs, Rotorua
☎ 0800 646 768
✉ info@zorb.com
🌐 zorb.com



Rotorua Duck Tours



Experience the thrill of riding on a converted WWII Amphibious Landing Craft (The Duck), while you enjoy incredible lake and mountain scenery. Visit up to four lakes set amongst unique natural landscapes. Our legendary guide will bring Rotorua alive by retelling stories of the past and providing information on Māori culture, geothermal wonders, ecology, historic sights, flora and fauna. Our tours offer a great introduction to Rotorua and are perfect for all ages.

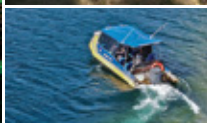


Two unique tours - Rotorua City & Lakes Tour 90mins (Family Fun) and Tarawera & Lakes Tour 120mins (Eco Tour). All weather. Language translation sheets available.

📍 1241 Fenton Street, Rotorua
☎ (07) 345 6522
✉ info@ducktours.co.nz
🌐 rotorua ducktours.co.nz



Totally Tarawera - Somewhere Very Special



Walk the Tarawera Trail, New Zealand's most beautiful day walk, with return water taxi. With a little less effort, enjoy a lake tour or try one of our stunning shorter walks. Stay the day or overnight at geothermal Hot Water Beach DOC campsite. Or totally relax at our secret hideaway glamping site.

Water Taxi, Lake Cruise, Tours, Glamping.
Hot Water Beach DOC Camp. Lake Tarawera,
20-minute drive from Rotorua. Visit our
website for tours, taxi times, glamping and
DOC camp bookings.



📍 The Landing, Lake Tarawera, Rotorua
☎ (07) 362 8080
✉ info@totallytarawera.com
🌐 totallytarawera.com



Velocity Valley Adventure Park



Conquer fears and discover new limits by launching into action at New Zealand's ultimate adventure hub. Velocity Valley is New Zealand's premier adventure park with five unique rides. Fun for the whole family. Home to the world's only Shweeb, New Zealand's only Agrojet, Swoop & Freefall Xtreme & Rotorua Bungy. Present this advert & receive 50% off your photo and video package.

No prebookings required, we are an all weather park. Check our website for the most up to date opening hours.



📍 1335 Paradise Valley Road, Rotorua
☎ 0800 949 888
✉ reservations@velocityvalley.co.nz
🌐 velocityvalley.co.nz



Kaituna Cascades



Join the original Kaituna rafting company for unbeatable grade 5 whitewater adventures on New Zealand's most exciting and beautiful rivers! Experience 14 epic rapids in the amazing deep warm water canyons of the Kaituna River including the world's highest rafted waterfall! We strive to give you the safest and most entertaining trips on the river.

Daily departure: Kaituna River at 9am, 11.45am and 2.30pm (4.30pm summer only). Bring swimwear and a towel. Epic combo adventures available online.



📍 18 Okere Falls Road, Okere Falls, Rotorua
☎ 0800 KAITUNA (524 8862) or 027 276 5457
✉ info@kaitunacascades.co.nz
🌐 kaitunacascades.co.nz



Agrodome



Action-packed from the second you enter the farm gate, experience a day on our real-life working farm. Enjoy the world-renowned Farm Show and jump on our guided Farm Tour for an up close and personal animal meet and greet.

Open 7 days, 9am – 5pm.
Farm Shows, Farm Tours, and Dog Trials
run throughout the day.

Agrodome

📍 141 Western Road, Ngongotahā, Rotorua
✉ reservations@agrodome.co.nz
🌐 agrodome.co.nz
📱 agrodome 📘 AgrodomeRotorua



Lady Janes Ice Cream Parlour



Take time out with family and friends to enjoy a sumptuous treat at Rotorua's iconic Lady Janes Ice Cream Parlour. There is something for everyone, from Danish Waffle Cones to fabulous sundaes, milkshakes and smoothies... the list goes on! With over 50 flavours to choose from, including dairy-free options and real-fruit ice creams!

Follow us on Instagram and tag us with your delicious ice cream Instagram: [#ladyjanesicecream](#)



📍 1092 Tutanekai Street, Rotorua
☎ (07) 347 9340
📷 [ladyjanesicecream](#)

Paddle Board Rotorua



See NZ's famous glowworms right here in Rotorua or discover the steaming geothermal wonders of Lake Rotomahana with Paddle Board Rotorua. We provide incredible evening glow worm tours with stand-up paddle board and kayak options and amazing steaming cliffs kayak tours in the day. Tours are suitable for beginners as our customer focused, friendly and all-round awesome guides will help you learn the activities and ensure you have a great time.

Shuttle service available. Visit our website for more information.



📍 i-SITE, 1167 Fenton Street, Rotorua
☎ 022 427 9136
✉ info@paddleboardrotorua.com
🌐 paddleboardrotorua.com



Off Road NZ & Raceline Karting



Visit Off Road NZ, you will be driven by adventure! Raceline Karting: 1.2km outdoor race circuit for pure karting exhilaration. Monster 4X4 Thrill Ride: hang on tight while being driven through our twisting and turning forest trails. 4WD Bush Safari: our premier 4WD experience that puts the driver in control with challenges and obstacles along the way. Claybird Shooting: test your accuracy and skill using real shotguns and live ammunition. Highly trained and entertaining guides. Discover a journey packed full of challenges, surprises and excitement!



📍 193 Amoore Road, RD2, Rotorua
☎ (07) 332 5748
✉ drive@offroadnz.co.nz
🌐 offroadnz.co.nz



Katoa Jet



Uncover Lake Rotorua! Experience the thrill of jet boating with 360° spins whilst discovering Rotorua's ancient and inspiring history or enjoy the ride and relax at Manupirua Hot Springs, only accessible by water. We offer a range of trips enjoyable for the whole family.

Daily deals and family discounts available - see our website for more info.



KATOA
LAKE ROTORUA

📍 1 Lakefront Drive, Rotorua
☎ 0800 538 7746
✉ info@katoalakerotorua.co.nz
🌐 katoalakerotorua.co.nz



Horse Trekking Lake Okareka



Horse trek through 500 acres of native bush and 1,500 acres of working sheep and cattle farm with stunning views of Lake Okareka, Lake Tarawera and Mount Tarawera. Horses to suit all abilities, with guided treks from 30 minutes to 3 hours. What a fantastic way to enjoy the fresh air and experience the region. Rides to suit all abilities from beginners to experienced riders.

Daily departures at 10am, 1.30pm and times to suit. Various routes on offer, depending on weather, trail conditions & rider experience.



- 📍 Longfords Farm, 51 Acacia Road, Lake Okareka
- ☎ (021) 292 2233
- ✉ lucy@treklakeokareka.co.nz
- 🌐 treklakeokareka.co.nz



Rail Cruising – Self Drive Rail Cars



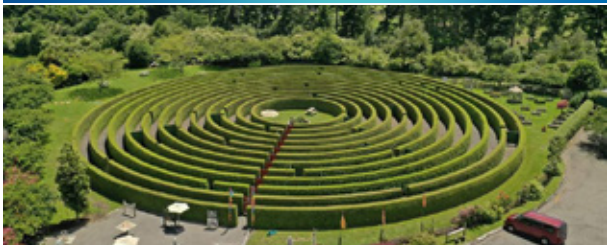
Travel in your own rail car with the curve of the rails stretching out into the distance. Hear the clickety clack of the rails beneath you as you pass through beautiful the Dansey Scenic Reserve. The RailCruiser is your own personal rail car – designed to carry up to four adults or two adults and three children.

Duration 1.5 hours, 19km trip return.
Daily departures. Prices vary.
Bookings essential.



- 📍 11 Kaponga Street, Mamaku
- ☎ 0800 72 45 74
- ✉ bookings@railcruising.com
- 🌐 railcruising.com

aMAZEme “Have Fun – Get Lost!”



Old-fashioned family fun for all ages, aMAZEme opened in 2010 as a must-do experience where people of all ages can come and have a great time together in a lovely, relaxing environment. Get lost in the 1.4km hedge maze and home of the giant board games. Bring a picnic. We also offer toys for toddlers.

Present this advert or mention ‘Visitor Guide’ to receive 10% off your entry (conditions apply; discount does not apply to family pass).



📍 1335 Paradise Valley Road, Rotorua

☎ (07) 357 5759

✉ amazeme@xtra.co.nz

🌐 amazeme.co.nz

Volcanic Hills Winery & Tasting Room



Discover the amazing flavours of New Zealand’s best wine growing areas, made right here in Rotorua. The Tasting Room, up the iconic Skyline Gondola, offers our delicious wines with panoramic views.

Tasting Room open daily, check website for current hours. You must be 18 years or older to taste or purchase wine.



VOLCANIC HILLS WINERY

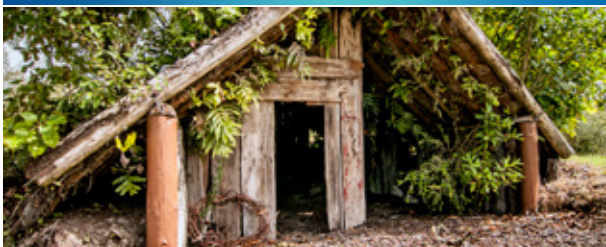
📍 Top of the Skyline Gondola, 176 Fairy Springs Road, Rotorua

☎ (07) 282 2018

✉ taste@volcanichills.co.nz

🌐 volcanichills.co.nz

Buried Village of Te Wairoa



Encounter first-hand how the Tarawera eruption drastically changed peoples lives and the landscape of Te Wairoa – now New Zealand’s most visited archaeological site. Come and explore the award-winning museum, excavated village sites, café, gift store and beautiful waterfall trail. An authentic, peaceful, and fascinating experience awaits.

Enjoy a scenic 15-minute drive past the Redwood Forest and the Blue and Green Lakes before arriving at the Buried Village.



📍 1180 Tarawera Road, Rotorua
☎ (07) 362 8287
✉ discover@buriedvillage.co.nz
🌐 buriedvillage.co.nz



Rotorua Golf Club



One of NZ’s leading golf courses situated in the picturesque Whakarewarewa Geothermal Valley. The golf course is an 18 hole, par 70 course providing variety and challenge. Steaming hot pools, bubbling mud, as well as bunkers make up the unique golf hazards around the course. The golf club has a fully equipped professional golf shop with clubs, trundlers and electric cart hire to ensure clients enjoy their round of golf.

After a memorable round clients can also take advantage of the fully licenced restaurant and bar. Enquire about competitive group and trade pricing.

📍 399 Fenton Street, Rotorua
☎ (07) 348 4051
✉ golfshop@rotoruaclub.co.nz
🌐 rotoruaclub.co.nz



Lakeview Golf & Country Club



Come and enjoy our free draining 18 hole, par 72 course, where we have spectacular views of Lake Rotorua, Mokoia Island and surrounding countryside. Hazards include bunkers and native bush clad gorges. Lakeview has a fully stocked pro shop with electric carts, clubs and trundlers available for hire.

Competitive pricing available for large groups, corporate days, 9 or 18 hole team building challenges or head over to our covered driving range and practice your swing.



📍 704 State Highway 5, Rotorua (3 min drive north of Agrodome)
☎ (07) 357 2341
✉ info@lakeviewgolf.co.nz
🌐 lakeviewgolf.co.nz

Volcanic Air Helicopters and Floatplanes



Experience helicopter and floatplane tours over our stunning Lakes District abundant in spectacular volcanic and geothermal wonders. Land and explore geothermal reserves and the dormant volcano of Mt Tarawera. Try something new and add a visit to lake edge hot pools only accessible by boat or floatplane.

Flights depart from the Rotorua City Lakefront. Priced from \$127 per person. Open daily from 8.30am.



📍 Lakefront Drive, Rotorua City Lakefront
☎ (07) 348 9984 or 0800 800 848
✉ info@volcanicair.co.nz
🌐 volcanicair.co.nz



Rotofobia Escape Adventure

Crack codes, find clues and solve mysteries in our top-notch escape adventure house in the centre of Rotorua! Your team is locked up in a room and given 60 minutes to escape! Expect to be thrilled! Check our website for available days and times.



📍 1282 Hinemoa Street, Rotorua
☎ (027) 527 9660
✉ info@rotofobia.co.nz
🌐 rotofobia.co.nz



National Kiwi Hatchery Aotearoa

Experience conservation in action at the world's largest and most successful kiwi hatchery! An educational, thought-provoking, and truly unique experience, you'll see how the National Kiwi Hatchery is working hard to save our national bird. Help us hatch more kiwi.



📍 192 Fairy Springs Road - Next to Skyline
☎ 0800 724 626
✉ reservations@nationalkiwihatchery.org.nz
🌐 nationalkiwihatchery.org.nz



📍 Te Puia

Stratosfare Restaurant & Bar



Take a scenic gondola ride up Mt Ngongotahā to enjoy Rotorua's award-winning restaurant. Stratosfare offers an à la buffet experience including kitchen theatre, a stunning array of freshly prepared buffet and cooked to order dishes highlighting locally sourced seafood, meat and produce. Relax in the ambience featuring amazing panoramic views of the city and iconic David Trubridge lighting.



Stratosfare Restaurant opens for lunch from 11.30am and dinner from 5.30pm. Phone for bookings or via website. Please share your photos with us #StratosfareRotorua

📍 178 Fairy Springs Road, Rotorua
☎ (07) 347 0027
✉ rotorua@skyline.co.nz
🌐 skyline.co.nz



Pig & Whistle Historic Pub



Enjoy the warm atmosphere of one of Rotorua's most popular pubs, with the newest addition of a retractable roof in the garden bar. Try our fresh and tasty pub food or a refreshing drink from our large selection, including 15 craft beers and ciders on tap. Live music, playing every Friday and Saturday nights, makes us the perfect place for a great night. Live sports on 7 big screens.



Open 11.30am till late, 7 days a week. Located in the heart of the Rotorua CBD in a classic piece of 1940's architecture, the Pig & Whistle is a local landmark with a great history.

- 📍 1182 Tutanekai Street, Rotorua
- ☎ (07) 347 3025
- ✉ marketing@pigandwhistle.co.nz
- 🌐 pigandwhistle.co.nz

Good Eastern Taphouse



If you're after a quick bite or pub meal, our chefs have created a mouth-watering menu to cater for all dietary needs, whether you're wanting a refreshing beer after a ride in the forest, a cheeky wine with the ladies, or a relaxed family meal. Even your four-legged friends are welcome in the dog friendly covered courtyard, only a 5 minute walk from the Redwood Forest.

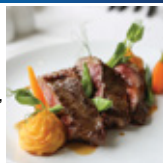
If you haven't got time to stop, there's a delicious range of Good George brews to takeaway too.



📍 Cnr Tarawera & Te Ngae Roads, Rotorua
☎ (07) 345 4476
🌐 goodeastern.nz
📘 GoodEasternTaphouse

Regent Room, Restaurant & Wine Bar

The Regent Room open daily offers breakfast, coffee to go, high teas, lunch, tapas and dinner including a degustation menu 7 nights a week. Experience contemporary New Zealand cuisine, an extensive wine list and elegant cocktails paired with professional, friendly service.



📍 1191 Pukaki Street, Rotorua
☎ (07) 348 4079
✉ info@regentrotorua.co.nz
🌐 regentrotorua.co.nz



Duke's Bar & Restaurant

To be found in the historic Prince's Gate Hotel is award-winning cuisine and an ambient bar serving New Zealand beers and wines. Open daily for breakfast, lunch and dinner. Try the all day Dukes Bar menu. This is the home of high teas in an elegant Victorian décor.



📍 1057 Arawa Street, Rotorua
☎ (07) 348 1179
✉ info@princesgate.co.nz
🌐 princesgate.co.nz



Capers Café + Store



We love good food and good coffee! Fuel your day with wholesome, delicious meals from our seasonal menus, or choose from our cabinets bursting with fresh salads, savoury and sweet options. Our extensive tea menu features Libertine Blends plus Noble & Sunday, which sits alongside our Organico Coffee providing an organic, fair-trade fix. Take time to browse our Store with a vast selection of New Zealand Artisan products, perfect for foodies!

**capers café
+ store**

Open everyday from 7am-7pm for breakfast, lunch and dinner. Happy hour daily from 4pm-6pm. Check out our Capers@Home ready-made meals and whole cakes online.

 1181 Eruera Street, Rotorua
 (07) 348 8818
 capers.co.nz
 @caperscafe

Gelato Mio Ice Cream



Gelato Mio Ice Cream is New Zealand's largest Gelateria.

Connected to Rotorua's first cat cafe, it offers over 70 flavours. Gelato Mio Ice Cream believes in "small batches, big freshness", meaning the gelato is made daily on site so it can be consumed in the best condition:

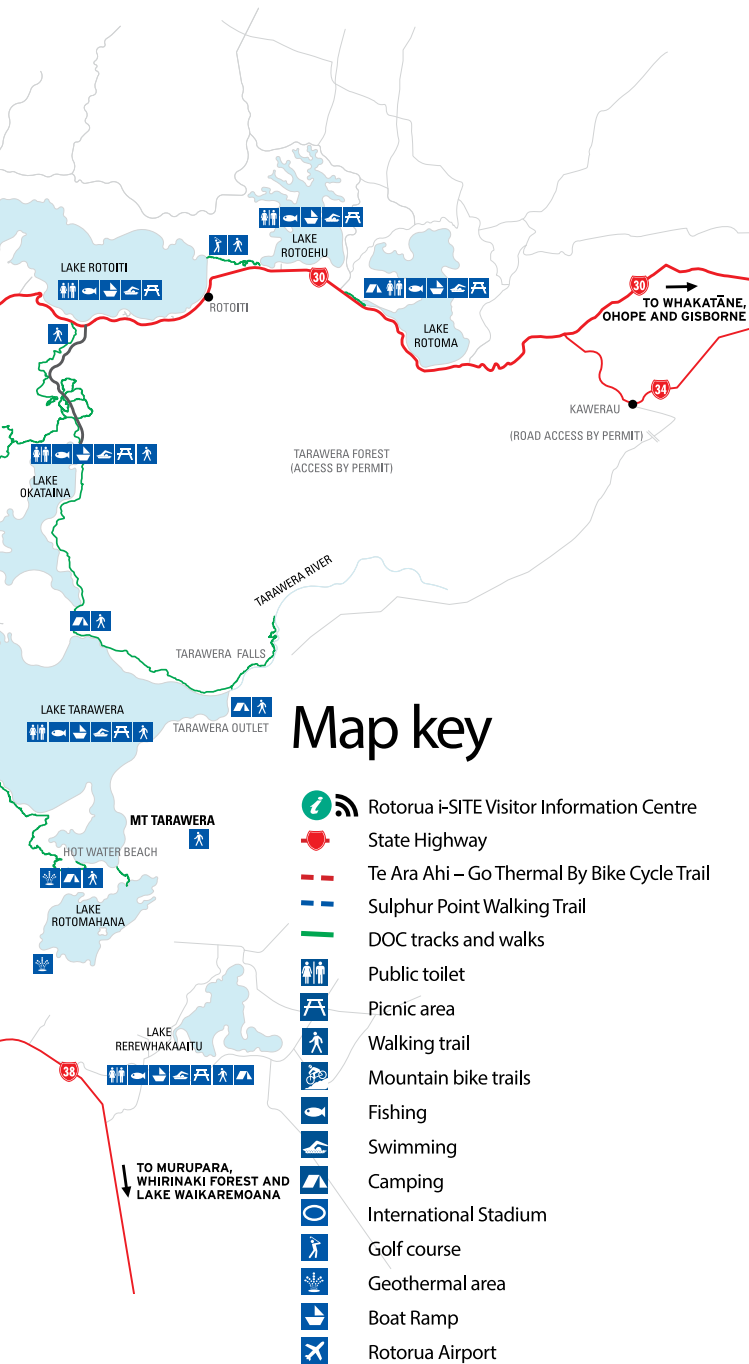
dense and smooth with natural colour and flavour. All of the top quality ingredients are shipped directly from Italy to give your taste buds the best of the best! Exciting new flavours are frequently added to the selection to make every visit a new experience. We now have milkshakes and smoothies made from our homemade gelato!

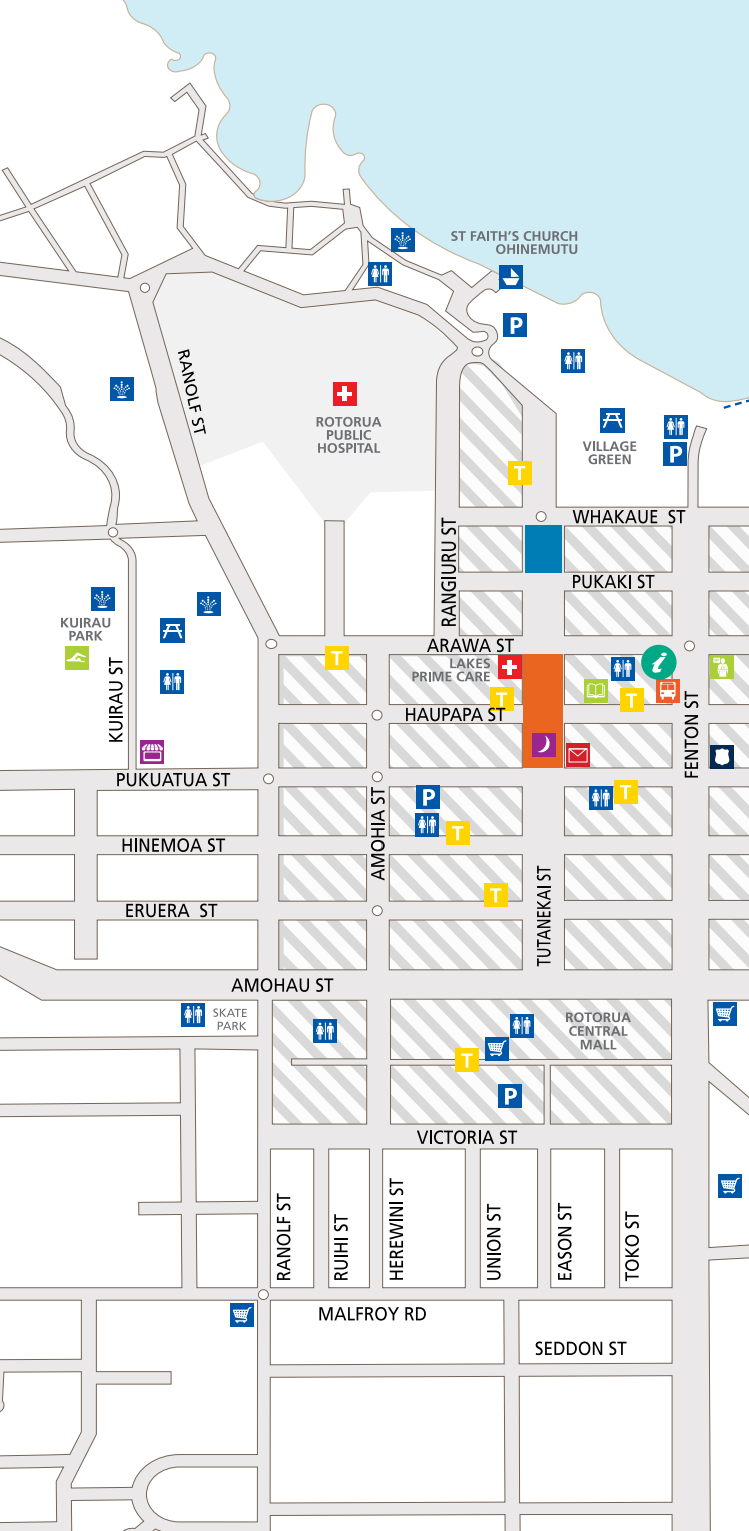


Gelato Mio Ice Cream even provides dairy-free, gluten-free, sugar-free and fat-free options for those who want a bit of change. Attached to Fancy Meow Cat Café.

📍 1210 Arawa Street, Rotorua
☎ (07) 460 6868
✉ gelatomiorotorua@gmail.com
📘 [gelato.mio.rotorua](https://www.facebook.com/gelato.mio.rotorua)









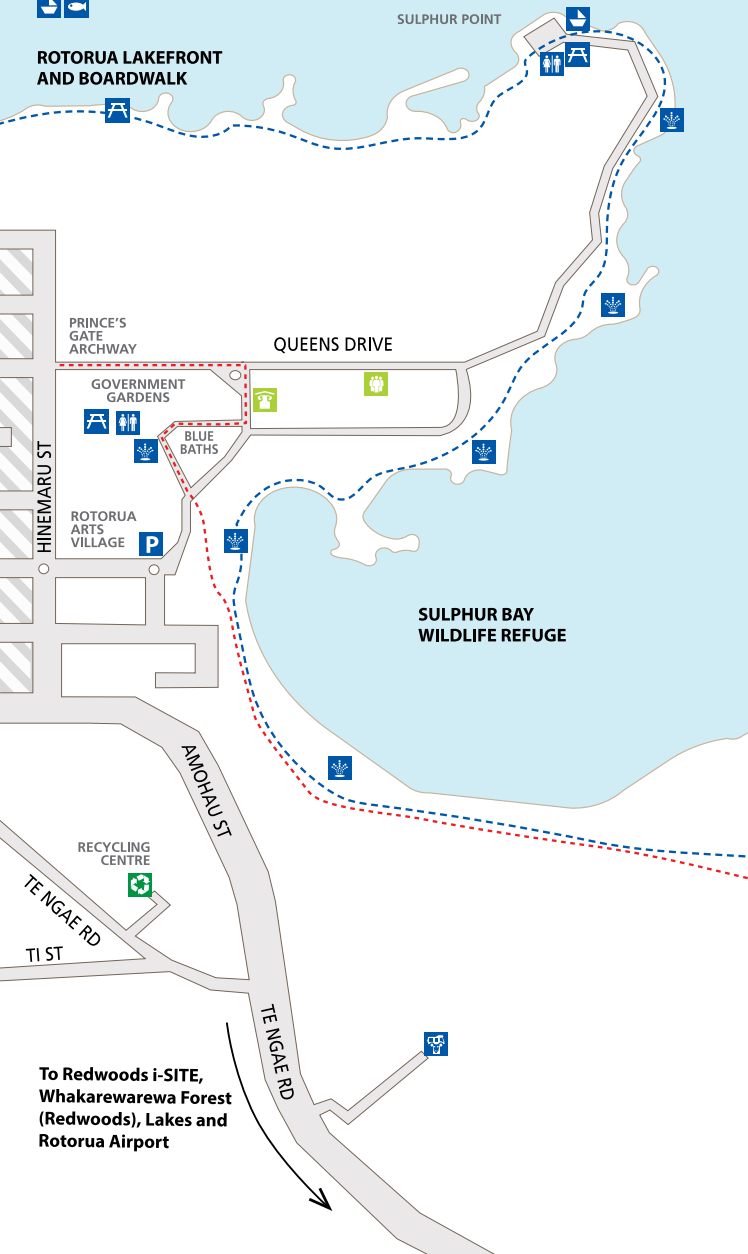
NORTH

LAKE ROTORUA



ROTORUA LAKEFRONT AND BOARDWALK

SULPHUR POINT



To Redwoods i-SITE,
Whakarewarewa Forest
(Redwoods), Lakes and
Rotorua Airport



ROTORUA TRAVEL EXPERTS

Rotorua i-SITE Visitor Information Centre is the city's official information and booking service, ready to assist you seven days a week, 364 days a year.

Best of all, their services are 100% free.

The friendly i-SITE team is happy to assist with:

- ▶ Attraction, sightseeing and accommodation advice, bookings and vouchers
- ▶ Any specials or package deals available
- ▶ All forms of transportation bookings (bus, ferry, rail and flight)
- ▶ Rest of New Zealand itinerary bookings
- ▶ Luggage storage
- ▶ Free Wi-Fi

A 1167 Fenton Street
Corner Fenton and Arawa
Streets, Rotorua

T +64 (0)7 348 5179

E info@RotoruaNZ.com



SITE



Visitor
Information



To help plan your holiday
check out RotoruaNZ.com