

AUTUMN/WINTER 2021

ROTORUA

**YOUR
GUIDE TO
ROTORUA**

**MOUNTAIN
BIKING MECCA**

**FUN UNDER
THE STARS**

**BEST SPOTS
TO USE YOUR
GOLD CARD**



RADIX NUTRITION XTERRA ROTORUA FESTIVAL

10 April 2021



Since its inception 25 years ago, XTERRA Rotorua Festival has grown to become the biggest multisport event in New Zealand and the biggest XTERRA event held in any location throughout the world. Each year nine running, mountain biking and/or swimming events are set in and around beautiful Lake Tikitapu (Blue Lake) and Whakarewarewa Forest – without question some of the most amazing scenery for both competitors and spectators.

xterra.co.nz

ROTORUA MARATHON

8 May 2021

New Zealand's most iconic marathon features four events that take runners through our hidden gems, surreal scenery and stunning natural wonders. Events include the full marathon nicknamed "Take the Lake" around Lake Rotorua, the Red Stag Timber off-road half marathon, a 10km, and a 5.5km run or walk, offering a distance for everyone.

facebook.com/rotoruumarathon



Up&Up Photography & Film

CRANKWORX

1-7 November 2021



The world's largest mountain biking festival returns, bringing the best mountain bikers to compete in several events. Crankworx Rotorua is more than just pro-athletes going to head to head in downhill, jump and trick events, it's an exciting festival atmosphere that celebrates the world-renowned mountain bike culture of Rotorua. This is the perfect spectator event, too, with track-side views as well as giant screens so you'll catch all the action.

crankworx.com



KIA ORA & WELCOME

to the latest edition of the Rotorua Visitor Magazine.

Rotorua is perfectly positioned in the heart of the Central North Island, making it an easy destination to add to your itinerary whether for a day trip, weekend getaway, or a week-long holiday.

From our famous geothermal landscapes and tranquil forests, to our lakes and rivers; from our own winery, brewery, and coffee roasters, to eateries ranging from decadent to down-to-earth; from the rich history of New Zealand's indigenous people to the multicultural region it's become – there are so many reasons why Rotorua is one of New Zealand's favourite holiday destinations.

Having so many amazing options to choose from can make planning your visit

a bit tricky, so if you need help narrowing down your choices, we hope this edition of Rotorua Magazine will help.

Firstly, check out the newest activities and eateries on pages 6 and 7, as well as on page 11. Hint: see geysers at night, and paddle a kayak right over the site of the Pink and White Terraces.

If you're a keen mountain biker or prefer to see Rotorua by peddle-power, our feature story on page 8 is your guide to how, who, when and where, from tour guides to bike shops and where you can safely lock up your ride while you refuel and quench your thirst.

We've also included a story showing

night owls what to do after dusk, and another story highlighting activities where travellers who are 65+ in age can take advantage of their SuperGold Card discounts and package deals available through Rotorua i-SITE Visitor Information Centre.

With such a wealth of exciting activities, attractions and natural wonders on our doorstep, plus the manaakitanga and warm welcome Rotorua is known for, we hope you'll visit soon to see for yourself why we love it here so much.

Operating days and hours for some businesses may change following publication, so it always pays to check before you go.

- 2 FEATURED EVENTS
- 4 WHAT'S ON
- 6 WHAT'S NEW & FUN IN ROTORUA
- 8 GEAR UP FOR A GREAT RIDE
- 11 EVENING ACTIVITIES FOR NIGHT OWLS
- 13 AMAZING ACTIVITIES FOR SUPERGOLD CARD HOLDERS
- 16 Q&A WITH TASHA MEYS



RotoruaNZ



DestinationRotorua



+64 (07) 348 5179



RotoruaNZ.com



SKYLINE MTB PARK



To see more Rotorua events and confirm dates, check out RotoruaNZ.com/whats-on

WHAT'S ON

Highlander | Geyser to Lake

3 APRIL 2021

The Highlander | Geyser to Lake mountain bike race returns. The 23, 40 and 63km routes take in the Te Puia geothermal valley, Whakarewarewa Forest and finish at Lake Tikitapu.

highlandermtb.co.nz

Rotorua Youth Festival

11 APRIL 2021

Sport, as the key driver behind youth engagement, will bring rangatahi and their whānau together for a full day of sport, entertainment and fun.

facebook.com/rotoruyouthfestival

Matariki

19 JUNE - 11 JULY 2021



Matariki is the Māori name for a group of 7 or 9 stars known as the Pleiades star cluster. When Matariki reappears in our dawn skies, around June or July each year, it heralds the start of Te Tau Hou Māori – the Māori New Year. Rotorua is celebrating this special time with a range of free events around the region.

rotorualakescouncil.nz/Matariki

Giant 2W Gravity Enduro

17 APRIL 2021



Ezra Newick

Race 3 of New Zealand's premier enduro race series in the world-renowned Whakarewarewa Forest.

facebook.com/2WGravityEnduro

Winter Forest Festival

8 AUGUST 2021



Kurt Matthews

Something for everyone, offering seven events including trail running/walking and mountain biking options with kids' activities, an expo, food and live music as we celebrate the amazing vibes in stunning Whakarewarewa Forest.

facebook.com/Winterforestfest


WEEKLY

Rotorua Night Market – Thursdays 5-9pm, Tutanekai St. Food & boutique shopping
Rotorua Farmers Market – Sundays 9am-1pm, Te Manawa. Fresh produce & crafts

Tough Guy & Gal Challenge

21 AUGUST 2021



Swamp crossings, a spider's web net climb, barbed wire crawl, bush trails, tunnels, hurdles, a climbing frame, plus mud, mud and more mud – what a race to watch!

eventpromotions.co.nz

Emerson's Whaka100

22-24 OCTOBER 2021



Emerson's Whaka100 proudly holds the reputation of one of the toughest mountain bike marathons in the Southern Hemisphere.

facebook.com/Whaka100

Rotorua Blues Festival

22-25 OCTOBER 2021



A festival of blues with artists from all over New Zealand.

facebook.com/rotorua bluesfest



ROTORUA i-SITE VISITOR INFORMATION CENTRE

With so many options for what to do and where to stay, we recommend contacting the friendly travel experts at one of the Rotorua i-SITE Visitor Information Centres for free advice and bookings. They've got the best deals, too, so you can trust them to arrange the most fun, exciting, and memory-making visit.

The Rotorua i-SITE team is also the only booking agent in New Zealand that offers a 100% MONEY-BACK GUARANTEE with all Rotorua accommodation sales, giving you peace of mind and a great night's rest while you're here.

OPEN 7 DAYS 8:30am – 5:00pm
RotoruaNZ.com/isite

NEW! LAKESIDE PICNIC GETAWAY PACKAGE



Volcanic Air Rotorua

If you've been daydreaming of beach-side getaways on tropical islands, Volcanic Air's 90-minute picnic begins with a scenic floatplane tour over Lake Rotorua, Mokoia Island and the beautiful Rotorua landscape. You'll then disembark at a beautiful, secluded beach on the Northern edge of Lake Rotoiti for an hour of delicious food, swimming and exploring while your pilot sets up the perfect picnic.

NEW! STEAMING CLIFFS KAYAK TOUR



Waimangu Volcanic Valley & Paddle Board Rotorua

Explore the amazing scenery of Lake Rotomahana in Waimangu Volcanic Valley on this kayak tour. Watch the steam rise from the cliffs in the world's youngest geothermal system as you hear the story of this incredible place and paddle your way past geothermal features exclusive only to this beautiful part of New Zealand. Book online through Paddle Board Rotorua.

NEW! V-FORCE



Velocity Valley

Since 1998, people have been heading to Velocity Valley to pedal, freefall, launch, propel, swoop or splash their way to adventure. The team there is very creative, having invented Shweeb Racer, the world's only pedal-powered monorail track. Adding to their stable of adrenaline-inducing adventure rides is V-Force, a reverse bungee that sends you 45 metres skyward at speeds up to 80km/h.

NEW! GEYSER BY NIGHT



Te Puia

Until now, the magic hidden within Te Puia after hours has remained a secret that only Mother Nature knew. For the first time ever, the geothermal valley is revealed under night skies, providing a multi-sensory experience that makes Geyser by Night truly remarkable. Read more about this interactive journey over on page 11.

NEW! HUI E! KAI E! AND MAKUE! KAI E!



Tamaki Māori Village

Tamaki Māori Village offers two new interactive and immersive experiences you can really sink your teeth into. Literally. In both the daytime Hui E! Kai E! and the night-time Makue! Kai E! activities, you'll roll up your sleeves and prepare what is possibly the world's first fried-bread burger. While dining with your hosts, you'll be entertained and enlightened by stories of new and old. Read more on page 11.



Off Road NZ

Buckle up and hold on tight. Driven by adventure, Off Road NZ's highly trained (and entertaining!) guides provide pulse-racing, adrenaline-pumping adventures that are perfect for families, friends and groups. From the rugged and remote self-drive 4WD Bush Safari, to the Monster 4X4 Thrill Ride, and heart-racing Raceline Karting, this truly is the adventure-seeker's playground of their dreams. Claybird shooting and archery are also available with advance bookings.

NEW! EASTWOOD



Eastwood

The crew behind Terrace Kitchen is thrilled to launch their latest dining destination, Eastwood, located within Scion Research, and nestled alongside the famous Whakarewarewa Forest. Eastwood serves up Mediterranean-styled, wood-fired pizzas, fresh salads, and sandwiches with a difference. Atomic Coffee and sweet treats from the cabinet are also on offer. Open daily from 8am with two late nights on Friday and Saturday.

NEW! FTP VEGAN EATS



FTP Vegan Eats

The FTP Vegan Eats food truck was such a hit at the Rotorua Night Market on Thursdays, that veganista Kaya has just moved into permanent premises in the CBD, making her famous burgers and loaded fries available four days a week. While we're on the subject, another fantastic plant-based café to check out is Tea & Happiness on Fairy Springs Road.

NEW! THE FAINTING GOAT



The Fainting Goat

The Fainting Goat is the newest chilled-out gastropub on the block. With nibbles, platters and sliders perfect for sharing, plus chilled brews, a killer cocktail menu and sleek atmosphere, it's a great place to start your evening or spend a Saturday afternoon.



Lady Janes Ice Cream Parlour

Lady Janes Ice Cream Parlour is an absolute Rotorua icon. Challenge yourself to choose from the 40 different flavours of ice cream, 1, 2 or 3 scoops, and your choice of additional toppings. Milkshakes, smoothies and coffee are also available, and all of this is just across the road from the Village Green at the end of Eat Street.



Sabroso

Since 2007, Sabroso has been serving up a rustic menu of amazing, traditional dishes from the Caribbean, Central and South America, all infused with Latino warmth, hospitality and house-made sauces and spices. Complement your meal with signature wine varietals of Chile and Argentina, seasonal sangrias, signature margaritas, or mojitos to create an authentic dining experience. Sabroso is lovely and cosy (but not cramped), so bookings are highly recommended.



site

A full-page photograph of a mountain biker in a blue shirt and black shorts riding a white bike on a dirt trail. The trail is surrounded by dense green ferns and tall trees. Another biker is visible in the distance on the same trail.

GEAR UP FOR A GREAT RIDE

Undisputedly the mountain biking capital of New Zealand, Rotorua has more kilometres of mountain biking trails than any other city in the country.



WHAKAREWAREWA
FOREST



The vibrant cycling culture of Rotorua is evident by the 20-plus bike shops around town, the numerous restaurants and cafés that cater to riders (and even their four-legged trail buddies), and the ever-increasing number of world-class mountain bike trails being built year after year.

DISCOVER OUR CITY'S HIDDEN GEMS

We think seeing the city and all it has to offer from your bike has got to be the best way to see it all. On foot is great, too, but by bike you can see even more in less time. Do it on your own along the 23.7km of shared walking-cycling CyWay, or with a guide to show you the most 'gram-worthy spots.

To see the city, **Happy Ewe Cycle Tours** is a great go-to. Owner-operator Roger was born and raised in Rotorua and knows all the hidden gems that most people miss.

Happy Ewe's three-hour tours are mostly off road (and mostly flat) and include nearly 30 sites around town, with plenty of history, and stops along the way to capture the scenery. The tour is suitable for all ages, includes bike hire, and child seats and tandem trailers for children are available.

Daily tours with **MDA Experiences** include a scenic ride around the central business district, taking in areas of significance and learning the geographical and cultural history of the inner city.

GO FURTHER FOR LONGER

Electric bikes are all the rage these days, not just for commuting, but for sightseeing and even mountain biking.

Hire an e-bike – both commuters and trail versions are available – so you can explore further for longer. And they sure make a hard slog up a hill a heck of a lot easier!

Companies like **Electric Bike Rotorua**, **The Volcano Rock Electric Bike Factory** and others make it easy to find your perfect mount to enjoy during your visit.



Make your next holiday one that's enjoyed on two wheels and come to Rotorua. It's the perfect place for individuals and families to get out and enjoy fresh air, incredible scenery and a bit of adventure.

BIKE-FRIENDLY PLACES TO REHYDRATE AND REFUEL

Whether you've been shredding our epic mountain bike trails or exploring the city by bike, there's a great selection of bike-friendly places (just bring your own lock) to quench your thirst or satisfy the 'hangry' monster within.

Eastside:

Sequoia Eatery*
Good Eastern Taphouse*
Eastwood Café*
BurgerFuel at Redwood Centre
Grøunded at Te Pūtake o Tawa

In and near the CBD:

Arts Village Café
Terrace Kitchen
Eat Streat
Lady Janes Ice Cream Parlour

Southside:

Secret Spot Hot Tubs Rotorua*
Trail Kitchen Rotorua

To read more about some of these spots, head to www.rotoruanz.com and type **"THIRSTY"** in the search bar.

**Your furry trail buddy is welcome here at the outside tables, with water bowls on tap nearby.*

HIRE, FIX AND SHOP

Where to rent a bike:

Mountain Bike Rotorua
Planet Bike

Where to have your bike serviced:

Bike Culture Limited
Cyclezone Rotorua
Electric Bike Rotorua
Evo Cycles Rotorua
Jeffsonbikes
My Ride Rotorua
The Suspension Lab
Torpedo7 Rotorua

Where to go for cool kit:

NZO Ride Central



RIDE THE FAMOUS FOREST OR NZ'S ONLY GRAVITY PARK

Heading to Rotorua for mountain biking is an obvious choice when you're looking for, well, choices.

With nearly 200km of purpose-built trails in **Whakarewarewa Forest**, there are trails for everyone, from beginner to seasoned experts, cruisy to extreme downhill, not-so-fit to pro athlete. There's even a kid's loop that's not only great for the littlies but also a perfect warm-up for newbies.

Riding is always free and the trails are always open. Seriously, there's no excuse not to try it!

Skyline Rotorua is home to New Zealand's first all-season Gondola-assisted MTB bike park, allowing you to access 11 world-class downhill mountain biking trails on Mt Ngongotahā at intermediate, advanced and expert-only levels. You can buy one, 15 or 40 Gondola trips up the mountain, to ride as much or as little as you can fit into your day, and bikes can be hired from Skyline if you didn't bring your own.



A SPECTACULAR EVENT FOR MTB LOVERS

This year, for the first time ever, **Crankworx Rotorua** becomes the final stop of the Crankworx World Tour. That means we'll not only see the best of the best compete for overall Crankworx titles, but we'll get to witness the King and Queen of Crankworx crowned at the final event of the Crankworx FMBA Slopestyle World Championship (SWC) season.

If you haven't experienced the Crankworx festival, start planning your visit now because this is one epic, energy-filled, trick-fuelled, bike-centric event you don't want to miss.



EVENING ACTIVITIES FOR NIGHT OWLS

Not satisfied with just daytime activities like whitewater rafting the famous Kaituna River, ziplining through an ancient forest canopy, or marvelling at our geothermal landscapes, many Rotorua tourism operators have created loads of evening experiences for you to enjoy. Who needs a proper bedtime on holiday, anyway?

NEW: GEYSERS UNDER THE STARS

When **Te Puia** guides sneak you in through a secret passage and down a dark tunnel, you'll feel like you've been given special back-stage access to this famous geothermal valley at night after the park has 'closed'. In fact, the amazing thing is that if you've visited during the day, this new Geyser by Night tour will look and feel completely different.

Starting at dusk and armed with a flashlight, you'll be escorted through the park's three kilometres of night trails that end at the world-famous Pōhutu Geyser. Along the way, your hosts – some who are fifth generation guides – will share the history and stories of the valley, the geothermal features, and the Māori iwi who made this spot their home 170 years ago.

While we don't want to give everything away, stops in the tour provide tasty treats, including one made using traditional methods.

NEW: FORESTS BY NIGHT

It's not often you'll show up as a guest somewhere and be asked to make your own dinner, but this is just the start of the fun you'll have at **Tamaki Māori Village's** new Makue! Kai E! experience.

Following a traditional whakatau (welcome ceremony) as you enter the village, you'll be handed an apron and begin creating your own fried bread Puku Burger, a new twist invented by the Tamaki team.

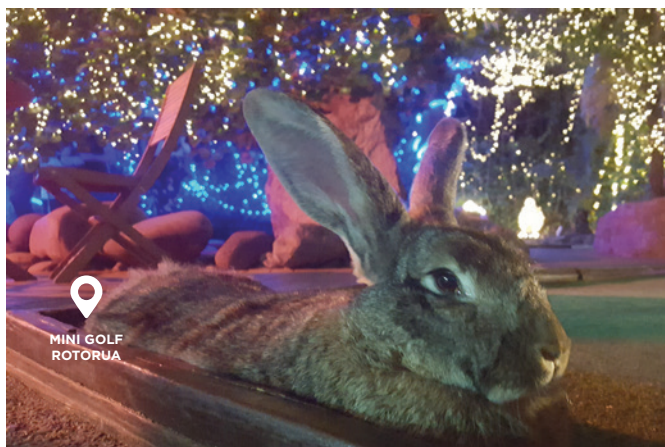


Once assembled, your burgers are whisked away to be cooked while you enter the towering tawa forest. Here bonfires blaze and delicious morsels are cooked for you – buttery corn on the cob, boil-up broth, steamed mussels, smoked fish and more – and an evening of song, dance and story-telling ensues before you feast upon your hand-made burger with your hosts joining you like long-time mates.



The award-winning **Redwoods Nightlights** experience is one you'll remember for years to come, and newly hung David Trubridge-designed aluminium lanterns add to the magical atmosphere.

Suspended high above the forest floor, you'll walk along a 700-metre walk consisting of 28 eco-suspended bridges and 27 platforms among 75-metre-tall Californian redwoods. The intricately designed walk – lit with colourful LED lights and the Trubridge lanterns – takes you up to 20 metres off the ground, providing a unique perspective of this stunning natural environment.



NIGHT-TIME GOLFING WITH LIVE BUNNIES

Challenge yourself to a game of mini golf at one of the most picturesque courses in the country. This is a game for all ages and skills – in fact, the worse you are the more fun you'll have!

Mini Golf Rotorua prides itself on providing high-fun, low-skill entertainment for the whole family. Colourful fairy lights, a bubble machine, friendly bunnies bouncing around the course, plus pigeons, waterfalls, fish and frogs keep everyone delighted and entertained for the whole 18 holes.

GALAXIES OF GLOW WORMS

Glow worms are the highlight of any evening, and when found in abundance they can be as breath-taking as our starry skies.

There are a few ways to find these fascinating creatures. One way is on the water as you're guided across one of our lakes to hidden caves. Two local companies know the way – you just choose your vessel: aboard a paddle board (SUP) with **Paddle Board Rotorua**, kayak with **River Rats**, or **Waimarino Kayak Tours'** sea kayak or Canadian canoe.

If you're more comfortable with feet on terra firma, a walking tour into the native bush will top off this stellar evening by relaxing under the stars.



CAPTURE THE MAGIC

Don't leave your camera behind. Many smart phones are able to capture sunsets beautifully, and Rotorua has many picture-perfect spots. Kuirau Park, Lake Rotorua, Sulphur Bay, and atop Mt Ngongotaha via **Skyline Rotorua** are a few to try.





AMAZING ACTIVITIES FOR SUPERGOLD CARD HOLDERS

In Rotorua, you can breathe in the fresh forest air amid giant redwood trees, feel your body relax in the thermal waters, and hear the roar of the Southern Hemisphere's largest active geyser – all at special discounted rates for SuperGold Card holders.

If you've got a SuperGold Card and you're planning your next holiday, be sure to check out the discounted package deals that follow for great things to do in Rotorua. Enjoy these special rates only when you book through one of the Rotorua i-SITE Visitor Information Centres.

IMMERSE YOURSELF IN NATURE

Redwoods Treewalk never fails to impress. Whether you visit by day or night, you'll be transported through this peaceful haven above the forest floor, and given peace of mind knowing the trees are protected through a uniquely constructed series of slings to avoid damaging the trees or natural environment around them.

Another geographic treasure is the incredible volcanic valley created when Mt Tarawera erupted in 1886.



Waimangu Volcanic Valley's cruise on Lake Rotomahana shows you the literal hot spots in the geothermal landscape that are still steaming, hissing and spouting water.

Once the heart of a native forestry mecca that thrived for decades, Rotorua Railway in Mamaku has been transformed into a world-first self-drive touring railway called

RailCruising. Gentle curves and steep climbs with beautiful lake views and native forest scenery are featured along the 19-kilometre voyage. Each RailCruiser fits up to four adults and only your group members will share the ride. Clear, drop-down curtains and blankets on board create the perfect all-weather cruise in comfort.



Te Puia is a long-time favourite of visitors to Rotorua, and seeing the world-famous Pōhutu Geyser erupting is a sight you'll never forget. Join one of the guided experiences (twice daily at 10.30am and 1.30pm on open days), to learn about this incredible geothermal valley, Māori culture, and the kiwi Conservation Centre with five kiwi in a new state-of-the-art enclosure.



ENJOY EPIC VIEWS

If there's a relaxing and self-rewarding must-do in Rotorua, it's taking the scenic route up Mt Ngongotahā by way of the **Skyline Gondola**. The views over Rotorua and its namesake lake are beautiful by day or night.

Speaking of views and while you're there, feast your eyes upon one of the best buffets you'll ever find at **Stratosfare Restaurant and Bar**, or treat yourself to a wine tasting with a platter of nibbles at the only winery in Rotorua, **Volcanic Hills Winery**. Both options allow you to make more of that million-dollar view before you take another gondola back down the mountain.

LET YOUR INNER KID OUT

The Rotorua City & Lakes tour with **Rotorua Duck Tours** will really take you back in time as you board an authentic re-purposed WWII amphibious watercraft.

Rotorua Duck Tours driver-guides are as entertaining as they are knowledgeable about the Ducks they're commandeering as well as the three lakes (you'll splashdown on two) and surrounding areas you'll visit.

Animal lovers adore **Paradise Valley Springs** for all the feathered and furry residents and visitors to this beautiful wildlife park. Visit the kea in a walk-through aviary, meet the friendly tui, and see kakariki and kereru. Stroll through the wetland for great views of native and introduced waterfowl. Handfeed the farm animals and trout, and watch the pride of African lions being given their daily lunch.

Imagination is everything at **3D Trick Art Gallery** where you become part of the art. Be sure to have your camera ready as you immerse yourself in dozens of 3D action scenes such as falling out of a hot air balloon, or sitting at van Gogh's famous Café Terrace at Night. This is the only 3D trick art



gallery in New Zealand and your photos will capture all the fun.

SLOW THINGS DOWN


If you're looking for some extra relaxation and pampering, immerse yourself in New Zealand's original geothermal bathing experience at **Polynesian Spa**.

Several hot pools, both private and public, await, as well as the luxurious Lake Spa Retreat where a wonderful range of facials and body treatments are offered.

Tired muscles, aches and pains? The slightly acidic Priest Spring waters will help. To treat your skin, soak in the Rachel Spring.

Not much needs to be said about a **Volcanic Air** floatplane tour to the secluded Lake Rotoiti Hot Pools other than "book it." You'll love flying over Lake Rotorua and making a splash as you land on Lake Rotoiti for a relaxing hot soak along the lake's edge.

Being accessible only by boat or by air is what keeps this haven so unspoiled and pristine. Enjoy the beauty of the surrounding native flora and fauna, with seven mineral hot pools to soak in, and the clear blue lake waters to cool down in.

Last but not least, **Lakeland Queen** is a heritage-styled vessel that operates on the beautiful, historical Lake Rotorua. It's the only one of its kind in New Zealand and the gentle pace of its paddle provides a relaxing cruise, perfect for seeing the area's geothermal features, natural wonders and stunning views. The one-hour daily lunch cruises depart at 1pm. 

ROTORUA

Package Deals



site



Gold Card Discounts

FROM
\$91

More bang for
your buck



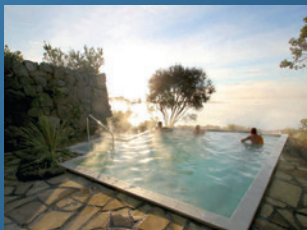
Redwoods Treewalk day or night



Waimangu lake cruise



Skyline Gondola ride



Polynesian Spa Pavilion Pools

FROM
\$183

See the town
sitting down



Rotorua Duck Tours



RailCruising



Waimangu lake cruise



Lakeland Queen cruise

FROM
\$185

The Bucket List



Redwoods Treewalk day or night



Volcanic Air floatplane to Lake
Rotoiti Hot Pools



FROM
\$124

Lace up those
walking shoes



Redwoods Treewalk day or night



Te Puia geothermal valley



3D Trick Art Gallery



Paradise Valley Springs



Prices shown are Gold Card specials. Non-Gold Card holders price will differ slightly. Activities do not have to be completed in the same day.

See something you like?

We can mix and match activities to suit your needs.

Enquire today:

07 348 5179

0800 ROTORUA

counter@rotorualc.nz



Q&A WITH TASHA MEYS

Social media marketer Tasha Meys recently visited Rotorua with her bestie. We asked Tasha a few questions about her time here.

What activities would you say are must-dos for anyone visiting Rotorua this summer and why?

If you have a sunny day in Rotorua, start with a horse trek overlooking the beautiful Lake Okareka, then enjoy a delicious lunch at Terrace Kitchen. Finish with an evening soak in the Secret Spot Hot Tubs. The hot tubs are incredible! The water is sourced and filtered from a spring so it feels amazing on your skin and doesn't leave you feeling or smelling 'chlorine-y'.

Are there any hidden gems that you discovered during your visit to Rotorua?

The native virgin forest we got to visit with Rotorua Canopy Tours. It's rare to see New Zealand bush as it originally was, plus I learned a lot about conservation.

Also, if you're an adrenaline lover like me, you'll love Off Road NZ's adventures!!! Go 4x4 driving (you drive!), monster trucking, or race your friends go-carting.



Do you have any childhood memories visiting Rotorua?

If so, what are they and why did they leave a lasting impression? As a child I have fun memories of family adventures on the Skyline Gondola and Luge, and mountain biking in the Redwoods. Rotorua always seemed to be full of activities so we would always look forward to visiting it.

Would you recommend that others get out to enjoy Rotorua? If so why?

Yes, 100%. Whether you live far or only an hour away, Rotorua is a good place to choose for a getaway. There are so many activities and it suits any budget. We were blown away by how lovely and welcoming everyone was.

What do you do professionally?

Social media marketing.

When you aren't busy with work what gets you up in the mornings?

A walk up the Mount. I love getting out and about outdoors. The fresh air and movement is the best way to start my day.



ROTORUA CANOPY TOURS

Soar through the trees and experience ancient New Zealand forest like never before – in two unforgettable zipline adventures. Immerse yourself in this intact native eco-system filled with towering trees, native flora and beautiful birdsong.

Tucked away in an unrevealing location is the entrance to an ancient forest. As soon as you step into its ambience you know you're somewhere special. Surrounded by unique flora and fauna found nowhere else in the world, a green filmy layer carpets the rainforest while outstretched branches lift your eye through layers of lush foliage and up massive ancient giants standing proud. You've never seen a place quite like it and with the guidance of Rotorua Canopy Tours you can see the forest through (and above) the trees!

Named one of the top 10 experiences of the South Pacific two years running, this is an experience not to be missed. There are two unique eco-tours to choose from to keep everyone engaged and excited. Conservation of the forest is a big part of the story and guests become part of this restoration journey with every ticket purchased contributing back to the rehabilitation of Dansey Road Scenic Reserve.

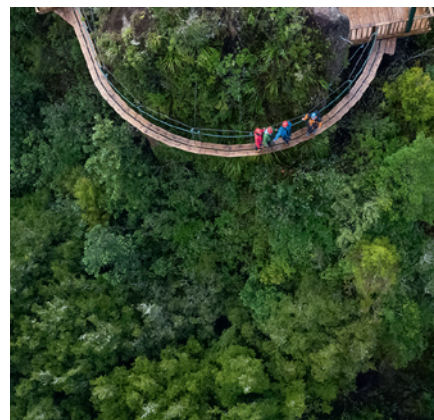
THE ORIGINAL CANOPY TOUR

This award-winning three-hour tour is perfect for all ages. Your guides will show you what New Zealand was once

like from the top of the forest canopy and explain the conservation challenges that now exist. In between the thrill of ziplines and suspended tree bridges, you'll see and hear wood pigeons, tui, North Island robins, bellbirds, tomtits, fantails and more as they flit amongst the tree canopy around you. Come and explore this unique environment and create amazing memories that will last a lifetime.

THE ULTIMATE CANOPY TOUR

The Ultimate Canopy Tour is higher, longer and even more spectacular than the award-winning Original Canopy Tour. The Ultimate Canopy Tour experience is a step up in adventure level and incorporates some incredible new features that will blow you away. It includes a 50-metre high suspended cliff-face walkway, swing bridges, controlled descent and an impressive 400-metre long tandem zipline, so you can share the experience of our longest zipline together! Glide across wide open valleys, deep gorges and lose yourself in this remarkable forest.



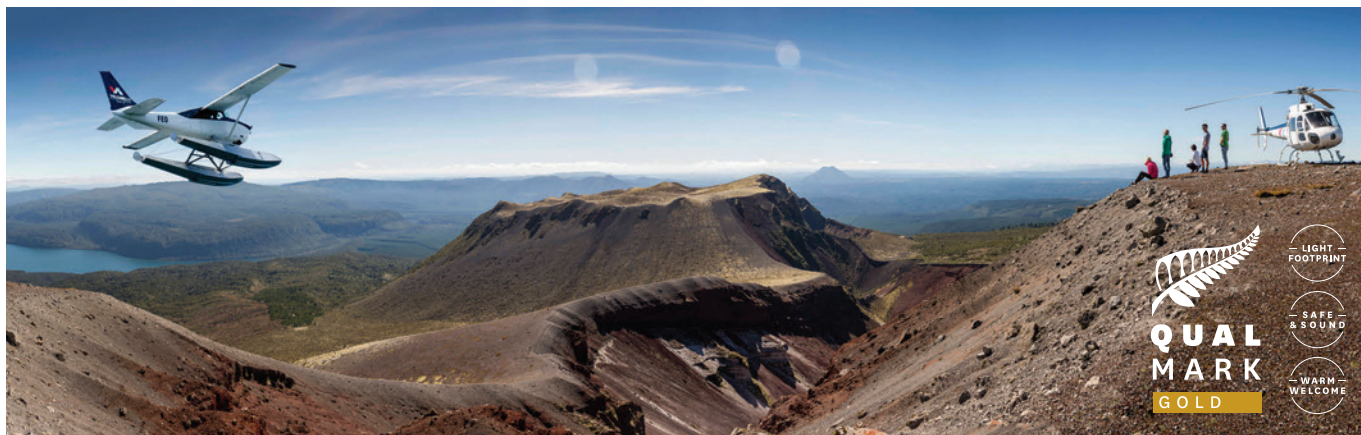
DO SOMETHING **NEW** NEW ZEALAND



VOLCANICAIR

HELICOPTERS & FLOATPLANES
ROTORUA - NZ

BOOK NOW!



— LIGHT
FOOTPRINT

— SAFE
& SOUND

— WARM
WELCOME

TRY OUR KIWI EXPERIENCES

- 2 HOUR HOT POOL EXPERIENCE BY FLOATPLANE @ \$165 PER ADULT
- 1.5 HOUR FLOATPLANE LAKESIDE PICNIC GETAWAY @ \$289 PER ADULT
- 6.5 HOUR TARAWERA FALLS VOLCANIC HELI HIKE BY HELICOPTER @ \$640 PER ADULT
- 3-4 HOUR FLOATPLANE/JETBOAT/GOLF EXPERIENCE @ \$299 PER PERSON

Lakefront Drive, Rotorua City Lake Front, Rotorua NZ | 0800 800 848 | VOLCANICAIR.CO.NZ



PARADISE VALLEY SPRINGS WILDLIFE PARK

Interact closely with a range of New Zealand's wild animals, native birds, farm animals and trout, and get up close to a large pride of African Lions.

DON'T JUST LOOK, GET HANDS ON

Animals that are found wild around the country such as deer, goats, tahr and wallabies, as well as a range of sociable farm animals like alpacas, emus and sheep can all be hand-fed throughout the day.

UP CLOSE WITH THE NATIVE BIRDS

Visit the Kea, New Zealand's infamous and comical parrot in their walk-through aviary, see kakariki and kereru birds and meet our friendly tui. Stroll through our waterbird wetland for great views of native and introduced waterfowl, and look out for the different native birds living wild around the park.

CASCADING WATERWAYS

Fern edged pools show off hundreds of rainbow and brown trout. Feed the wild trout in the natural stream and get eye to eye at the underwater window. Look out for large native long-finned eels lazing in their ponds.

NATURE AT ITS BEST

Pathways through native trees lead to our freshwater spring where you can drink straight from the source, then purchase some of our own bottled 'Paradise Pure' to take away with you. Take our elevated treetops walk in a tranquil and secluded area of the park, putting you up near the canopy of the trees.

THE PRIDE OF PARADISE

There is also a pride of African Lions that can be seen all day in an enclosure that allows visitors to get very close to these wild animals. The afternoon feeding show is a great time to see the lions active and to learn a bit more about the pride.

Paradise Valley Springs is open every day of the year from 8am to dark, with last entry at 5pm. Lion feeding is at 2.30pm everyday, followed by kea and possum feeding at 3pm.

We hope to see you at Paradise soon.



skyline

ROTORUA

there's
more.
to enjoy



Check our website for most
up-to-date hours of operation

Fairy Springs Road, Rotorua

Phone +64 7 347 0027

skyline.co.nz



VOLCANIC HILLS WINERY

ROTORUA'S LOCAL WINERY • TASTINGS • PLATTERS



VISIT OUR TASTING ROOM

Join us at the top of the iconic Skyline Rotorua Gondola for a glass of wine or a wine tasting in a relaxed environment with spectacular views.

For up-to-date opening hours, please check our website.

For Group Bookings call +64-7 282 2018

Walk-ins Welcome

Skyline
ROTORUA

176 Fairy Springs Road
Rotorua, New Zealand



WWW.VOLCANICHILLS.CO.NZ



You must be over 18 to purchase alcohol. Closed Christmas Day, Good Friday & Easter Sunday.



**BUY
TREETWALK DAY
GET NIGHTLIGHTS
FREE**
Limited time
Conditions apply

A ROTORUA MUST DO: REDWOODS TREETWALK

Experience this must do attraction by both day and night!
It is highly recommended and only 5 minutes from city centre.

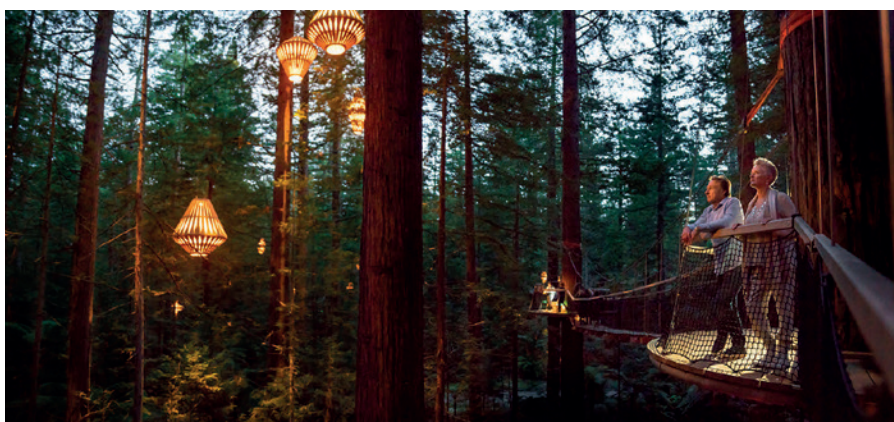
The Redwoods Treewalk offers visitors the opportunity to see this natural treasure from a bird's eye perspective, up to twelve metres from the ground. Walk into the canopy of the forest, breathe in the pure air and listen to the chorus of native birds. No rush, just nature and you.

The daytime walk allows for breathtaking views from each of the 22 living decks along the half-kilometre journey. Informative signs allow visitors to take in the full scope of this natural gem.

Open every night, the enchanted forest comes alive with the Redwood Nightlights. The creations of award winning design and conservation icon David Trubridge, this immersive experience ensures that you discover the forest in a whole new light; enhancing the majesty of the Redwoods and the native ferns. This is a truly magical and surreal experience.

Open daily from 9:30 am till late (as late as midnight over peak Summer holidays).

Check out our website for latest times:
www.treewalk.co.nz



📍 Long Mile Rd, Whakarewarewa, Rotorua
✉ info@treewalk.co.nz

🌐 treewalk.co.nz
📘 Redwoods Treewalk Rotorua





\$99 ADULT
OR CHILD
\$249 1 x ADULT
2 x CHILDREN
\$299 2 x ADULTS
2 x CHILDREN
HOT DEAL

REDWOODS ALTITUDE

Enjoy Rotorua's latest gem: a tree top experience into another world.

Your adventure begins on the "jellyfish" – a five-story high suspended spiralling staircase,

from there Altitude awaits – twenty-five jungle themed bridges, each one different and thrilling. Channel your inner adventurer as you make your journey high into the treetops. You'll feel like Indiana Jones as you make your way across net and rope bridges – even dodging missing planks.

Throw in a few flying foxes for good measure – and this is without a doubt the fun adventure you've been waiting for. Minutes from the heart of Rotorua city, in the awe-inspiring Redwood Forest, alongside our award-winning sister attractions, Redwoods Treewalk and Redwoods Nightlights.

SOARING ADVENTURE

Pull on your safety harness and step your way up five stories and into the treetops, then let our professional guides take you on a journey through the canopy of the original Redwoods.

Building on the sustainability ethos we've won awards for, Redwoods Altitude has been built without the use of a single screw, bolt or nail going into the trees.

Instead, the entire experience uses slings and is engineered in a way that doesn't inhibit tree growth.

EXHILARATING, INFORMATIVE – BUT MOST OF ALL FUN!

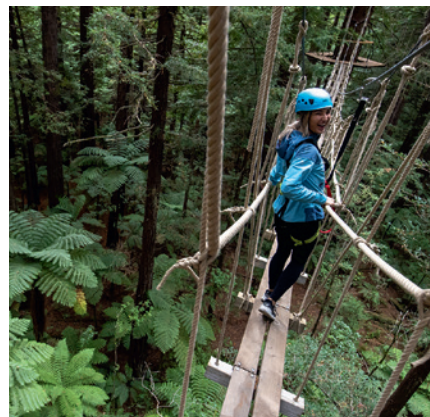
Throughout the tour, Altitude explorers are guided on their adventure while learning the stories of the forest, our region and its colourful history.

Did you know that the Redwood Forest was a location used in Walt Disney's 2016 film *Pete's Dragon*? It's also been described as **'the forest moon of Endor'** by Star Wars fans.

Tours depart every hour from 10am, and take about two hours, leaving plenty of time to explore the rest of Rotorua. All equipment is provided – you just need to bring your sense of adventure.

Height, weight and health restrictions apply. For more info and bookings, visit www.redwoodsaltitude.co.nz.

Check out our Facebook page: [altitude.nz](https://www.facebook.com/altitude.nz) and Instagram [@altitude.nz](https://www.instagram.com/altitude.nz).





POLYNESIAN SPA

Polynesian Spa is perfect for those seeking to rejuvenate their health and wellbeing and brings you our Mindful Moments retreat to help you switch off from your busy life to bring mind, body and spirit into balance.

Spend two days on our **Mindful Moments Retreat** surrounded by the natural elements of Rotorua and Polynesian Spa's therapeutic alkaline and acid waters. You will be guided through yoga, mindfulness, meditation, wellness workshops and take time to indulge in world-renowned Polynesian Spa therapy treatments.

Mindful Moments is hosted by our highly experienced Spa and Retreat Manager Helena Keenan and inspirational Polynesian Spa Health and Wellness ambassador Rachel Grunwell. This unique geothermal bathing and soul soothing retreat originated here at Polynesian Spa in 2016 and has established itself as a must do health and wellness experience for those wanting to unwind, relax and reset.

BOOK YOUR 2020 MINDFUL MOMENTS RETREAT NOW

Saturday 15th May – Sunday 16th May

Saturday 14th August – Sunday 15th August

Saturday, 13th November – Sunday, 14th November

Visit www.polynesianspa.co.nz/mindful-moments-retreat for more information and to secure your mindful moments weekend.



1000 Hinemoa St, Rotorua
(07) 348 1328

info@polynesianspa.co.nz
polynesianspa.co.nz



POLYNESIAN SPA
GEOTHERMAL HOT SPRINGS
AND THERAPIES



POLYNESIAN SPA

GEOHERMAL HOT SPRINGS
AND THERAPIES



ROTORUA HERITAGE FARM

Rotorua Heritage Farm presents “Family Fun for everyone”. We offer fun, exciting and educational activities for all visitors - The Farm Tour, 3D Trick Art, Café 171.

THE FARM TOUR

An hour long tour led by a qualified team of guides, includes meeting nursery animals, travelling through our farm environment on covered trailers while experiencing and feeding farm animals with the guide providing educational information about the farm and its livestock.

3D TRICK ART

A 3 dimensional experience of 50 paintings that all ages can enjoy and is a first in the New Zealand market. It offers an educational, creative and imaginative experience. 3D Trick Art has been rated as 2nd out of 68 attractions in Rotorua according to Tripadvisor.



CAFÉ 171

Based on a kiwi farm landscape, Café 171 offers a stunning venue for the special events. Enjoy a coffee and a meal while the kids are romping in the playground. We can host up to 200 people for weddings, birthdays or conferences. We also offer a perfect, unique setting for your wedding photos



SELF-DRIVE RAIL CARS RAILCRUISING

Imagine sitting in control of your own rail car travelling along a railway line with nothing ahead but the unobstructed curve of the rail stretching out into the distance.

RailCruising is the new tourist activity that allows people just like you the ability to travel along railway lines in your own powered self-drive, 4-seat railway vehicle called the RailCruiser.

The rail journey of 20km takes approximately 1.5 hours return through the beautiful Dansey Native Forest and rolling farmland with views out over Lake Rotorua. Listen to the commentary and discover a unique piece of New Zealand railway and local history.

The RailCruiser has comfortable seats with unobstructed views, is fitted with clear drop-down waterproof sides, windscreen wipers, blankets provided and comes with onboard heating.

RailCruising is a special experience to be shared with family and friends. It is popular with clubs and social groups with many combining RailCruising with lunch or dinner at the iconic Mamaku Railway Station.

How does RailCruising work? Groups of RailCruisers spaced apart, travel 10km together in one direction from Mamaku Railway Station to Tarukenga Railway Station. At Tarukenga the Rail

Cruisers are then turned and head back to Mamaku.

Cruising along at 20km/hr, you can listen to the audio tour and discover a unique piece of New Zealand railway history. This is the ultimate way to experience a railway.

The RailCruiser V3000 is the world's first fully automated, state of the art petrol-electric four seat self-drive hybrid rail vehicle. The RailCruiser has comfortable seats with unobstructed views, is fitted with clear drop down waterproof sides and comes with onboard heating.

Trips depart daily from Mamaku Railway Station at:

11am, 1pm & 3pm (Nov-Apr)
and 11am & 1pm (May-Oct).

Bookings are essential.

"What a great innovation! These little trains take you on a wee journey of 19km's return through the native forest seeing Farmland and Lake Rotorua."

Recent TripAdvisor Review





SECRET SPOT HOT TUBS ROTORUA

Enjoy a Secret Spot cedar hot tub soak or experience a “Shinny Dip” foot hot tub, surrounded by streams, ferns and bird song while sipping a craft beverage ah so good, see you soon.

Local brothers Eric and Keith have created Secret Spot, so you can treat yourself to a visit in paradise, a secret place, where streams and bird song set the tone for you to relax.

Enjoy a 45min individual hot tub soak with push button drinks service with up to 6 people in your group. By day enjoy the beautiful natural surroundings, swing bridges and waterfalls. By night Secret Spot becomes magical with tasteful lighting, and burning flames, while moreporks call to each other. Try dipping your toes into the new “Shinny Dip” foot hot tubs, FREE with any drinks purchase.

Stop in for a tasty lunch or Good George beer and cider. Want great coffee? Try our manuka-roasted coffee beans or indulge in our hand-crafted teas. To make things easy we are dog friendly and have private bike racks.



📍 13/33 Waipa State Mill Rd, Rotorua
☎ 0800 737 768 or (07) 348 4442

✉ info@secretspot.co.nz
🌐 secretspot.nz



SECRET SPOT
HOT TUBS ROTORUA

BURIED VILLAGE

New Zealand's most visited archaeological site.



The 1886 Tarawera eruption destroyed the Village of Te Wairoa, the Pink and White Terraces and with it the birthplace of tourism in New Zealand.

Learn how this historic New Zealand event devastated the landscape and lives of the people of Te Wairoa and the surrounding areas. Our museum exhibitions share remarkable stories of



human resilience, tragedy and survival. Walk over 1km of excavated heritage sites and see where the people of Te Wairoa lived and worked. Challenge the kids to Smithy's Treasure Hunt and explore the stunning scenery with a beautiful stream and waterfall walk. Stand in the spray of the magnificent Te Wairoa falls as it plunges over the Waitoharuru cliffs.



Complete your visit with a delicious bite to eat and a hot or cold beverage in our licenced onsite cafe, Smith & Co and browse our great range of gift and homewares in our store.

Enjoy a scenic 15 minute drive from the city centre and allow approximately 1-2 hours. For opening hours please call or visit our website.

1180 Tarawera Rd, Rotorua
(07) 362 8287

buriedvillage.co.nz
discover@buriedvillage.co.nz



[f](#) #BuriedVillage
[i](#) #BuriedVillage



**Book Online
Today**



1180 Tarawera Road, Rotorua
www.buriedvillage.co.nz

HORSE TREKKING LAKE OKAREKA

Horse and pony rides through native bush, over green pastures and spectacular views of Lake Tarawera.

Rides to suit all abilities from beginners to experienced riders. Experienced riders are able to trot and canter. Daily departures at 10am, 1.30pm, and times to suit.

Various trekking routes on offer, depending on trail conditions and rider experience. Trek through dense native bush, onto green pastures, across sheep and cattle country, and to the top of the farm with views over Lake Rotorua, Lake Okareka, Lake Tarawera, Lake Rotomahana, Lake Okataina, the Green Lake and Mount Tarawera. What a fantastic way to enjoy the fresh air and experience the region. Treks from 30 minutes to 3 hours.



📍 51 Acacia Rd, Lake Okareka, Rotorua
☎ (021) 292 2233

✉ lucy@treklakeokareka.co.nz
🌐 treklakeokareka.co.nz



ROTORUA DUCK TOURS

Explore Rotorua's incredible lakes district on New Zealand's only WWII Landing Craft, 'The Duck'. Experience the thrill of driving from land to lake without leaving your seat. Perfect for all ages.



Splashdown on up to 4 lakes while being entertained and informed by our legendary guides who will bring Rotorua alive by retelling stories of the past, along with providing information on Maori culture, geothermal wonders, historic sights, flora and fauna and much more. Learn about the Ducks WWII history.



The ducks have clear, roll down sides and on cold days we also have blankets available making the Duck suitable for any weather condition. Two tour options available, the Rotorua City and Lakes Tour (90min) and the Tarawera and Lakes Eco-Tour (120min) running every day in all weather. Our Tarawera & Lakes



Eco-Tour is a more focused look at Rotorua's rich history and environment. Tours depart at regular intervals throughout the day



📍 1241 Fenton St, Rotorua
☎ (07) 345 6522

✉ info@ducktours.co.nz
🌐 rotoruaducktours.co.nz



ADVENTURE PLAYGROUND ROTORUA

We are having a great time hosting our fellow kiwis who are exploring their own back yard. What better way to do it, than in our amazing 750 acre adventure playground.



Imagine being able to travel over 750 acres of native bush taking in the spectacular views over Lake Rotorua and beyond. Our Rotorua Adventure Playground trails are made from old forestry tracks dating back to the 1930s. Winding between totara, rewarewa and tawa trees, the native trees cast long shadows all along the



trails. You can either ride at pace on our new 4x4 self drive buggies or take things a little slower in the four wheel drive buggies which will be driven by one of our professional guides.

Whether you are after an adrenaline-filled off road experience, a stunning scenic horse trek or simply some fun



with a gun claybird shooting, our Rotorua Adventure Playground is the place to be. All activities take in the spectacular scenery overlooking Lake Rotorua and our beautiful native bush set on Mount Ngongotaha. Buggies and claybird shooting are available in all weather. We love what we do and we know you will too....

📍 451 Ngongotaha Rd, Rotorua
☎ 0800 782 396

✉ info@adventureplayground.co.nz
🌐 adventureplayground.co.nz



WAIKITE VALLEY THERMAL POOLS, SPRINGS 'N' SPA

100% pure natural geothermal water, direct from the largest single source of boiling water in New Zealand provides a natural geothermal bathing experience for all to enjoy.

Waikite Valley Thermal Pools, Springs 'n' Spa is a unique place to experience bathing in 100% pure natural geothermal waters. The boiling, sulphur free, calcite laden waters, direct from the depths of the earth, cascade into our outdoor Settler's Pool, Pergola Pool and Garden Pools, Sit 'n' Soak Pool and Tubs. All pools are drained and refilled daily. Private Pool options (bookings recommended) are also available, as is swimsuit and towel hire.

As well as the pool complex is a simple yet quaint 28 site campground with shower, laundry and kitchen facilities. Opening hours 10.30am – 8.00pm (except Christmas Day and Boxing Day) First pools drained from 7.15pm. Café offers a snack menu from 12.00 noon.



📍 648 Waikite Valley Rd, Rotorua
☎ (07) 333 1861

✉ info@hotpools.co.nz
🌐 hotpools.co.nz



TE PUIA

The Centre for New Zealand's Māori Culture and Geothermal Wonders.



There has never been a better time to experience the magic of Te Puia as we share the stories that have shaped our land and culture for generations. Te Puia, is home to the largest active geyser in the Southern Hemisphere, Pōhutu Geyser, as well as the New Zealand Māori Arts and Crafts Institute training the next generation of artists from around the country.

Join one of our world famous guided experiences at 10.30am and 1.30pm, showcasing our geothermal valley, Māori culture and Kiwi Conservation Centre with five Kiwi in our state of the art enclosure. Visit our stunning restaurant Pātaka Kai serving fresh coffee and lunch each day of operation as well as a mouth-watering buffet dinner experience on Friday and Saturday evenings.

Sunday brunch is also on offer. Our latest experience, Geyser By Night – Te Puia Light Trails, reveals for the first time our geothermal valley under night skies, providing a multi-sensory experience that can not be replicated anywhere else in the world. Hear the stories of the past and feel the beauty of Pōhutu in an interactive journey guided by light.

📍 Hemo Rd, Rotorua
☎ (07) 348 9047 or 0800 TE PUIA

✉ reservations@tepuia.com
🌐 tepuia.com



DRIVEN BY ADVENTURE!

Set amongst the stunning backdrop of New Zealand forest, enjoy impeccable safety and highly interactive adventure experiences for all ages and abilities. Operating since 1992.



With a visit to Off Road NZ you will be driven by adventure! For half an hour or most of the day, there is a range of self-drive activities to keep you entertained.

4WD BUSH SAFARI

Buckle in behind the wheel of one of our 4WDs into a journey of the unknown. In amongst our stunning native forest the



challenges come thick and fast.

MONSTER 4X4 THRILL RIDE

Take on the monster! It's huge, it's loud, it roars with V6 power. Hold on tight for the ultimate thrill ride!

RACELINE KARTING

The fast track to excitement. Experience



the buzz and adrenaline of kart racing on our 1.2km outdoor circuit, reach up to 100km/hour on the 150m straight.

CLAYBIRD SHOOTING

Test your skills and accuracy! With real shotguns and live ammunition. It's not as easy as it looks.

📍 193 Amoore Rd, RD2, Rotorua
☎️ (07) 332 5748

✉️ drive@offroadnz.co.nz
🌐 offroadnz.co.nz



VELOCITY VALLEY ADVENTURE PARK

Velocity Valley, where speed, adrenaline and fear collide. Experience iconic New Zealand inspired activities within one location.



Velocity Valley is excited to introduce our brand-new rides, the reverse bungy ride V-Force, as well as a thrilling upgrade to our outdoor-indoor skydiving ride, Freefall Xtreme.

V-Force will have you catapulting vertically up to 45 metres in the air, strapped to a cradle, the world a blur



around you, the G-force you will feel at launch equals that experienced by astronauts during lift-off (4.5 Gs)!

To add to the thrills, we have upgraded our outdoor skydiving ride, Freefall Xtreme, with a 4.8m high transparent cylinder providing a better flying experience than ever before.



With so much to offer in one location including: Agrojet, Shweeb, Swoop and Rotorua Bungy we should not be missed on your next visit to Rotorua.

Cost Saving multi ride packages available for individuals and families alike.

***See website for more details.**

📍 1335 Paradise Valley Rd, Rotorua
☎️ 0800 949 888

✉️ reservations@velocityvalley.co.nz
🌐 velocityvalley.co.nz



DRIFT KARTZ

Race on one of the slipperiest indoor go kart tracks in New Zealand.
With the best price on go karting in Rotorua.

Try out our purpose built slippery indoor go-kart race track. Perfect for all weather conditions.

Our race track has a special coating giving you one of the most difficult racing surfaces you will ever encounter, making for an out of control racing experience.

Imagine trying to control an out of control race car! That's what DriftKartz is all about.

Come and try out our new 400cc kartz!

Great for:

- **Team building**
- **Corporate events**
- **Sports teams**
- **School**
- **Social clubs**



📍 10 Old Taupo Rd, Rotorua
☎ (07) 345 6211

✉ admin@driftkartz.co.nz
🌐 driftkartz.co.nz



AMAZEME ROTORUA — “HAVE FUN - GET LOST!”

Old fashioned family fun for all ages. 1.4 km of hedges, giant board games, small animals, picnic areas and many other activities.

aMAZEme opened in 2010 with family fun in mind, a destination where two or three generations can come and have a great time together, in a lovely relaxing environment, whilst enjoying their own picnic.

We have a range of games including, tic-tac-toe, tug of war, balance bar wipe out, sack races, swing ball, frisbees, giant connect four, giant ludo, giant snakes & ladders and giant checkers. The prime attraction is of course our 1.4km Hedge Maze, with an average completion time of 20mins (parents, don't let your children win!). For those who like small animals, we have rabbits, doves and zebra finches.

Mention this ad and get 10% off the normal retail price.



📍 1335 Paradise Valley Rd, Rotorua
☎ (07) 357 5759

✉ amazeme@xtra.co.nz
🌐 amazeme.co.nz





KATOA

LAKE ROTORUA



FEEL THE THRILL

**Excitement & exhilaration
on Lake Rotorua**



DISCOVER THE CULTURE

**Discover an abundant
wildlife sanctuary steeped
in Māori culture**



CRUISE ON THE LAKE

**Relax and unwind in an
unspoiled pocket of paradise**

Book Now!



www.katoalakerotorua.co.nz



0800 538 7746



LAKEVIEW GOLF AND COUNTRY CLUB

Come and enjoy a unique 18 hole par 72 golfing paradise
with stunning views where everyone is welcome.



The golf course has undulating fairways and challenging greens with stunning views overlooking Lake Rotorua and Mokoia Island. Hazards include bunkers and bush clad gorges. As you play your round of golf you will enjoy the spectacular vistas across Lake Rotorua of Mount Tarawera and Mount Ngongotaha which stand

proudly steeped in local history in the Rotorua landscape. The peace and tranquility of Lakeview and the sounds and antics of native birds such as the Tui, Bellbird, Fantail and Kereru will add to this unique golfing experience. The club has a fully stocked pro shop and covered driving range for all your golfing needs. Clubs, trundlers and

electric carts are available for hire. Catering and bar facilities are available on Tuesdays, Saturdays and Sundays, other days by arrangement. Hold your corporate day or staff function with us this year! All enquiries can be made by contacting the Pro Shop.

**Mention this ad and receive 10% off
your green fees.**

☎ (07) 357 2341

✉ lakeview@golf.co.nz

🌐 lakeviewgolf.co.nz

📍 704 State Highway 5, Tarukenga, Rotorua



ZORB ROTORUA - ICONIC NZ INVENTION

Superman dive into a giant inflatable ball and roll down Mt Ngongotaha with ZORB, where the fun will have you laughing uncontrollably.

Discover FOUR different ball rolling tracks - the world's longest zig-zag Sidewinder Track, the smooth 'n' fast double Straight Track, MEGA Track - the longest, fastest and steepest track in all the land, and the newest track; Big Air, our latest thrill ride. Ride with water or without water, the choice is yours! The experience of rolling down a hill inside a giant inflatable ball has been an iconic adventure experience since Andrew and David Akers invented and developed the first ever ZORB site in the world back in 1997 at this very location!

To this day, Rotorua is the ONLY location in New Zealand where you can experience this amazingly fun and bizarre bucket list activity.



📍 525 Ngongotaha Rd, Rotorua
☎ (07) 343 7676 or 0800 646 768

✉ info@zorb.com
🌐 zorb.com

ZORB

Middle-earth™ is closer than you think...



In the heart of New Zealand, experience a slice of real Middle-earth™ and step into the lush pastures of the Shire™ with a guided tour of Hobbiton™ Movie Set, as featured in *The Lord of the Rings* and *The Hobbit* Trilogies. You will be taken around the 12-acre set; past Hobbit Holes™, the Mill and into the world-famous Green Dragon Inn, where you will be presented with a complimentary, exclusive Hobbit™ Southfarthing™ beverage to conclude your adventure.

HOBBITON™
• MOVIE SET •

501 Buckland Road, Hinuera | 07 888 1505 | www.hobbitontours.com

Lady Janes Ice Cream Parlour

fresher, brighter & yummiier than ever

relax, indulge & check out our new look:

- Over 50 flavours
- Danish Waffle Cones
- Sundaes
- Warm Desserts
- Milkshakes
- Smoothies
- Coffee



@ladyjanesicecream

1092 Tutanekai St (Eat Street) | Rotorua



WAIMANGU
VOLCANIC VALLEY



BIBLEWORLD MUSEUM & DISCOVERY CENTRE

A great place for adults and children to explore what life was like in Biblical times.

Enjoyable and educational! Check out the detailed handcrafted scale models in our Old and New Testament galleries. See over 70 ancient artefacts used in Biblical times. Try out a range of hands on activities, electronic quizzes and interactive maps.

Adults and children can dress as a Roman soldier, play a lyre, smell frankincense and myrrh, play the ancient game of Senet and much more.

See website for opening hours.

Free Entry for all visitors!

1141 Eruera St, Rotorua
(021) 909 842
bibleworld@xtra.co.nz
bibleworld.org.nz



You don't like to be
treated as a number,
**so why would
your pets?**

Jet Park

HOTELS

ROTORUA

Accommodation for you and your hooman
Pet bed | Toys, food, treats | Wash station

Benefits for humans: Free continental breakfast | Kids stay free
Free drink and late checkout, when booking direct. *T&C's apply.*

Use the booking code: **'FAMOUS'**, call: 0800 538 466
email: reservations@jetpark.co.nz or visit: jetparkrotorua.co.nz



PEPPERS ON THE POINT

Staycation in lakeside luxury. Five star boutique luxury lodge.

On the shores of Lake Rotorua, overlooking the sacred island of Mokoia sits Peppers on the Point, a luxury 5-star rated boutique lodge.

Choose accommodation from lakeview lodge suites, self-contained cottage suites or apartment style.

Unwind and relax on 5 acres of peaceful and tranquil beautifully manicured grounds and enjoy the many onsite activities - from tennis, massages and feeding the petting animals to reading a book at the lake edge.

Enjoy the fine dining in the à la carte Mains Restaurant. Breakfast is served daily, and lunches or picnics can be pre-arranged.

It's hard to believe the property is only minutes from the centre of Rotorua and within easy commute to the many adventure activities and cultural experiences in this destination.



📍 214 Kawaha Point Road, Rotorua
☎ (07) 348 4868

✉ info@onthepoint.co.nz
🌐 www.peppersonthepoint.co.nz



PEPPERS
ON THE POINT
LAKE ROTORUA



BLUE LAKE TOP 10 HOLIDAY PARK - ROTORUA

Blue Lake Top 10 is the perfect destination for your escape, boasting panoramic views of the stunning Blue Lake, as well as proximity to the vibrant town and attractions.

STAY

We offer an abundance of accommodation styles to suit any singles, families, groups or budgets.

- Lake-view motels
- Self-contained units
- Kitchen and standard cabins
- Powered and non-powered sites

PLAY

Located in the perfect spot to take advantage of Rotorua's 15 beautiful lakes. Just across the road from Lake Tikitapu and a short 5-minute drive to Lakes Okareka or Tarawera.

- Water activities galore - swimming, boating, fishing, kayaking or simply relaxing on the beach.
- Access to the Redwoods' walking, running and mountain bike tracks - various trails from beginner to experienced.
- Explore surrounding native bush and walks around the lake.



ROTORUA INTERNATIONAL MOTOR INN

Rotorua's newest motel - A perfect base for long or short stays with experienced Kiwi hosts that have extensive local knowledge.

Rotorua International Motor Inn offers a variety of spacious accommodation options from standard studios to one and two bedroom units.

- Amenities include:
- Kitchenettes
- Separate bathrooms
- Free WiFi
- Sky TV
- Air conditioning
- Guest laundry
- Private spa & outdoor courtyard

Check out our modern guest facilities on site with an outdoor heated swimming pool, compact gym, sauna and conference centre.



📍 2 Monokia Street, Rotorua
☎ (07) 282 2051

✉ info@rotoruumotorinn.co.nz
🌐 rotoruumotorinn.co.nz



ROTORUA FAMILY HOLIDAY PARK

Our family owned holiday park is in a quiet ideal location, no sulphur odour and just three minutes to many of Rotorua's major tourist attractions.



Enjoy our FREE UNLIMITED WiFi. In our park like grounds we offer various options of accommodation from sites, self contained, family or motel units. When staying with us your children can enjoy our playground and TV room with air hockey table. We also offer a solar heated swimming pool (seasonal), hot spa pool, and free



BBQ's in a covered outdoor dining area. For your convenience we have a 9kg gas bottle exchange, trout fishing tackle shop, dump station and full camping facilities.

We are ideally situated to take advantage of a three-minute drive to Skyline Rotorua Gondolas, mountain



biking, ZORB, Rotorua Canopy Tours, Adventure Playground, Velocity Valley, 3D Trick Art Gallery, Heritage Farm, aMAZE, and Mini Golf Rotorua with rabbits. Discount vouchers available. From camp it is a short walk to our local Ngongotahā shopping centre, world famous trout fishing streams and Lake Rotorua.

📍 22 Beaumont Rd, Rotorua
☎ (07) 357 4289 or 0800 574 289

✉ stay@rotoruafamilypark.co.nz
🌐 rotoruafamilypark.co.nz



REGENT OF ROTORUA

Escape ordinary. For that romantic retreat, or an adventure for the family, Regent of Rotorua is an urban oasis, a sanctuary in the city, offering a restorative, rejuvenating experience.



STAY...

The Regent marks the epitome of chic, luxury accommodation in the city.

Our boutique suites are perfect for your next romantic getaway, or for those families or friends travelling together, our 2-bedroom Executive Suites offer additional space for the



family. Our thermally heated swimming pool is a constant 28°C for year round enjoyment. Soak away aches & pains in our indoor mineral pool drawn from deep underground.

DINE...

The hip and stylish Regent Room Restaurant & Bar offers you a range



of contemporary New Zealand cuisine from our extensive menu including degustation dinners, plant-focused menu options and sharing plates & tapas.

Open 7-days a week from 6.30am until late serving breakfast, lunch, high teas, dinner and bar snacks.

📍 1191 Pukaki St, Rotorua
☎ 0508 734 368 (within NZ)

✉ info@regentrotorua.co.nz
🌐 regentrotorua.co.nz



QUEST ROTORUA CENTRAL

Come and experience this award winning Apartment Hotel in the heart of the city, offering the perfect home away from home whilst in Rotorua.



After a day of mountain biking in the Redwoods, zip lining through the Mamakus, or white water rafting the Kaituna River - it's always nice to return to your luxury apartment surrounded by all the creature comforts of home.

Enjoy fully air-conditioned and double-glazed apartments, with sumptuous



king size beds, kitchens and laundry facilities. Soak in a private hot tub in our executive apartments and surf away with FREE unlimited high speed WiFi, or more simply, chill out in your apartment with over 150 FREE movies on demand.

Book direct for the best available rates.



2019 Certificate of Excellence

2020 Traveller's Choice Award - Best of the Best

📍 1192 Hinemoa St, Rotorua
☎ (07) 929 9808

✉ host@questrotoruacentral.co.nz
🌐 questrotoruacentral.co.nz



AURA ACCOMMODATION

Centrally located accommodation setting the benchmark in friendly personalised service and sustainable practices.



Located within a block of the lakefront, 'Eat Street' and Government Gardens, Aura has become the hub for those seeking to make the most of their time in Rotorua. Whether that be taking the local team's advice and exploring a wide range of sights or enjoying the extensive facilities at Aura.



The geothermally heated pool, private thermal pools, free bike and scooter use, BBQ and steambox cooking facilities, Sky TV and Netflix give every reason to laze about the property. Come and experience this unique place putting people and the environment at the forefront.



2020 Trip Advisor Awards

- Travellers Choice Award 2020 'Ranked in the top 1% of properties worldwide'
- 7th Best Service Hotel in the South Pacific

📍 1078 Whakaue St, Rotorua
☎ 0800 333 799

✉ info@aurarotorua.co.nz
🌐 aurarotorua.co.nz



LAKE ROTORUA HOTEL

Nestled beside the beautiful, mystic shores of Lake Rotorua, this contemporary hotel is positioned right in the heart of this unique geothermal region.



Just an easy 15-minute stroll or 5 minute drive to Rotorua's CBD, the hotel affords easy access to the astonishing array of cultural, adventure and recreational activities available in this amazing area. The sacred, ancestral home of the Bay of Plenty Maori People, Rotorua is a bustling leisure destination with so much to do and see.



Within easy reach of dining and entertainment options, the Lake Rotorua Hotel offers contemporary, well-appointed guest room accommodation with a swimming pool and a heated spa pool. An ideal base to experience the diversity that Rotorua offers, the hotel features a breakfast room, guest room wheelchair access



and complimentary outdoor, on-site car parking.

The Lake Rotorua Hotel was awarded Qualmark's Silver Award for sustainable Tourism in 2019. Qualmark recognises businesses that are delivering holistically sustainable experience for guests and we are proud to have achieved silver status.

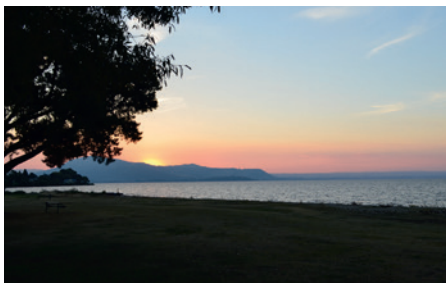
📍 131 Lake Rd, Rotorua
☎ (07) 346 2110

✉ reservations@lakerotoruahotel.com



CEDARWOOD LAKESIDE SPRING BREAK IN ROTORUA!

Sit back, relax and watch the world pass you by...



Welcome to Cedarwood Lakeside – Motel & Conference Venue, one of the most relaxing locations in Rotorua. Positioned on 2 acres of park like surroundings, directly on the shores of Lake Rotorua and just a short 8 minute drive from the hustle & bustle of the City. Our property consists of 16 spacious, comfortable & cosy units



ranging from Studios through to our popular Two Bedroom Lakefront Suites with endless views. To make your stay enjoyable, our facilities include a heated in ground swimming pool (seasonally heated), private indoor spa, outdoor hot tub, BBQ & picnic area, children's playground including two trampolines, petanque,



secure bike shed & wash down area, coin operated guest laundry, book & DVD library, plenty of off street parking for boats, trailers & jet skis and free unlimited WiFi to keep you connected.

We can even arrange a float plane ride for you direct from our jetty – what could be easier?!

📍 17 Holden Ave, Rotorua
📞 (07) 345 7773

✉ welcome@cedarwood.co.nz
🌐 cedarwood.co.nz



ROTORUA THERMAL HOLIDAY PARK

With more than 150km of purpose built mountain biking trails just a 5 to 10 minute bike ride from our park, you won't find a better location for your forest adventure.



Enjoy FREE hot mineral pools, on-site bike wash and storage. Stay in our tent, campervan or caravan sites, dorm rooms, studios, authentic log cabins, ensuite log cabins, fully self-contained flats, or luxurious fully equipped and spacious motel units.



Our guests have access to our well maintained communal kitchen facilities, gas BBQs, bathrooms, laundry, TV rooms, swimming pool (seasonal), kids play area and kids mountain bike track. A visit to Rotorua is not complete without soaking in our free hot mineral pools which are accessible to all guests.



All this surrounded by mature trees and gardens. Rotorua has become a mecca for mountain bikers, travelers and visitors from around the world.

📍 463 Old Taupo Rd, Rotorua
📞 (07) 346 3140

✉ info@rotoruathermal.co.nz
🌐 rotoruathermal.co.nz





VR ROTORUA LAKE RESORT

Set on 6 acres on the shores of the beautiful Lake Rotoiti.

VR Rotorua Lake Resort is located just 15 minutes drive from central Rotorua. It features an outdoor pool, a sauna and tennis courts. Guests enjoy free unlimited WiFi.

All rooms feature a private balcony or patio offering either stunning views over

Okawa Bay or the surrounding gardens. Each includes satellite TV, tea/coffee making facilities and a minibar. The Grill Restaurant is open for breakfast, lunch and dinner and serves modern New Zealand cuisine.

For more information please visit vrrotorua.co.nz

📍 **366 State Highway 33,
Mourea, Rotorua**
☎ **(07) 362 4599**
✉ rotorua.gm@vrhotels.co.nz



CENTRALLY LOCATED 5 STAR HOLIDAY PARK

Rotorua TOP 10 Holiday Park is Rotorua's multi award winning 5 Star -Premium graded Holiday Park.

The Rotorua TOP 10 Holiday is only a short walk to the heart of the city, with a range of affordable accommodation options to suit families, couples, or corporate travellers during their visit to Rotorua. Offering TOP quality accommodation ranging

from our 4 star motels to our well-equipped cabins- perfect for those looking for accommodation on any budget. We also offer all-weather powered campsites, ideal to experience & re-discover those childhood memories.

📍 **1495 Pukuatua St, Rotorua**
☎ **0800 223 267**
✉ stay@rotoruatop10.co.nz
🌐 rotoruatop10.co.nz





HEAVENLY DINING AND ADRENALINE-FILLED ADVENTURE AT SKYLINE

Award-winning dining meets adrenaline at Skyline Rotorua. Build up your appetite mountain biking, lugging or ziplining before settling in for an incredible dining experience at Stratosfare Restaurant and Bar.

GOURMET CUISINE

Famous throughout the Bay of Plenty and beyond, a night (or day) to remember is ahead of you at Stratosfare beginning from the moment you step into the Gondola and ascend Mount Ngongotaha.

Let the stunning views of Rotorua set the scene before beginning your evening with a signature cocktail before admiring the lavish sight of Stratosfare's magnificent buffet stretching the length of the restaurant.

Inspired by iconic kiwi cuisine infused with international influences, Stratosfare's head chef prides himself on delivering an unforgettable menu featuring locally sourced fresh seafood, meat and produce.

The new autumn menu includes a rich and creamy butter chicken, a mouth-watering coconut curry laksa soup and a host of favourites. Room for dessert? Check out the waffles with a selection of sweet toppings, preserves and assorted New Zealand ice cream.

Check the website for the most up-to-date hours of operation

ADVENTURE AWAITS

If you prefer to build up an appetite, then look no further! With their own Mountain Bike Park, Luge track, Skyswing and zipline there's something for every level of adrenaline junky.

Home to New Zealand's first year-round Gondola-assisted bike lift, Skyline Rotorua MTB Park is your gateway to world-class downhill mountain biking on your back doorstep with a trail for every level of expertise.

The Luge is a firm favourite for the whole family with both the scenic and intermediate tracks continuing to operate while the track that was formally known as the 'Advanced', is under FUNstruction.

Dare to face your fears at New Zealand's only Skyswing – the three-seated Skyswing hoists you 50m into the air reaches speeds of up to 150kph!

Feel the thrill of flying with Zoom Ziplines – the 400m dual ziplines allow you to race family and friends at speeds of up to 60km/h; it's the closest you can get to flying without wings!

Make your next family day out or fine dining experience one to remember at Skyline Rotorua.





PORK SPARE RIBS

BEEF & MUSHROOM
BURGER

FISH & CHIPS



LAMB SALAD



**Live.
music**

EVERY SATURDAY @ 10PM



Why limit happy
to an hour?

Mon-Fri
3:30pm
to 6:00pm
(excludes holidays)



FULL MENU AVAILABLE FROM 11:30AM – 10PM, 7 DAYS

Corner Tutanekai & Haupapa Streets, Rotorua

Ph 07 347 3025

pigandwhistle.co.nz

MATAI RESTAURANT – ROTORUA

Matai is an intimate fine dining restaurant and has fast become the city's number one restaurant fuelled by the passion of Executive Chef Ryan Gregorash.

Each dish his team designs is connected to the land and tells a uniquely New Zealand story – seasonal, flavoursome and wildly sophisticated, with a focus on ethically and locally sourced ingredients, often foraged close to home.

Everything served at Matai is crafted in our kitchen and prepared to order. Our menus change with the seasons and are dependent on what is fresh and available each day. We offer carefully balanced, flavoursome dishes – meticulously crafted from local ingredients and perfectly presented every time.

Matai Restaurant is owned and operated by its founder and Executive Chef – Ryan Gregorash. A renowned chef with vast experience, Ryan has run successful restaurants, cafés and bars in Rotorua and Tauranga. And, has won numerous national culinary awards.

In addition, Ryan Gregorash was named New Zealand's first Ambassador for #FairKitchens – a global movement which promotes positive culture within kitchens and the treatment of hospitality staff.



📍 350 Fenton Street, Rotorua
☎ (07) 282 2466

✉ bookings@matairestaurant.nz
🌐 www.matairestaurant.nz



★ **abracadabra** ★
cafe & bar
"good food, good vibes"

At Abracadabra Cafe and Bar Rotorua we believe in Good Food, Good Vibes in a unique, groovy atmosphere. We are passionate about providing delicious food & drinks - you'll love the ambience, friendly staff & magic that creates an excellent dining experience.

**CREATING AN ENVIRONMENT
WHERE GUEST SATISFACTION IS
OUR HIGHEST PRIORITY.**




1263 AMOHIA ST, ROTORUA \ 07 348 3883 \ WWW.ABRACADABRACAFE.COM

urbano *bistro*



BREAKFAST & LUNCH
Mon to Sun, 9am – 3pm



BAR SNACKS Mon to Sun, all day



DINNER Mon to Sat, 5.30 – 9pm

SMART CASUAL CAFE BY DAY

- ✓ Serving breakfast, lunch and bar snacks
- ✓ Fresh baked muffins, slices, cakes and biscuits
- ✓ Ozone Coffee – dine in or takeaway

BISTRO DINING BY NIGHT

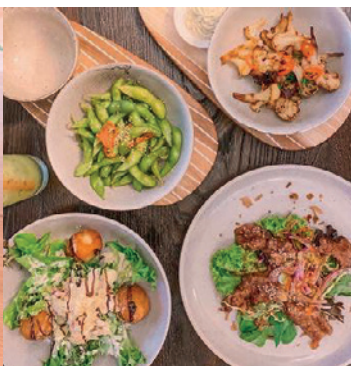
- ✓ Serving modern, innovative contemporary cuisine
- ✓ Free Motel Delivery
- ✓ Menus available online
- ✓ Reservations recommended

**VOTED ROTORUA'S MOST OUTSTANDING
RESTAURANT FOR 2013 AND 2016
FINALISTS IN 2014, 2015, 2017 & 2018**

Cnr Fenton & Grey Streets • www.urbanobistro.co.nz • Phone 07 349 3770 • UrbanoBistro



THE GREENHOUSE
Kitchen & Bar



1145 Tutanekai Street, Rotorua



The Greenhouse Kitchen & Bar Rotorua



07 343 7645



Thegreenhouserotorua

AROMA CAFÉ

The Aroma Cafe in Rotorua is one of the city's best kept secrets.

Breakfast, lunch, cold beverages and beautiful coffees. Relaxed dining near beautiful Lake Rotorua, with seating inside and out. On warm days you can enjoy our stunning garden where children are welcome to come and play.

From small intimate conferences through to special family gatherings, Aroma Café offers you the very best! Located near beautiful Lake Rotorua.



1126 Fenton St, Rotorua
(07) 346 0202

✉ aroma.cafe@hotmail.com



AROMA CAFE



THE COFFEE CLUB REDWOOD CENTRE

A wide range of breakfast & lunch meals, snacks, kids' meals, irresistible desserts & of course excellent coffee right by the famous natural treasure The Redwoods - Whakarewarewa Forest, which also makes an appearance in store!

Cnr Te Ngae & Tarawera Roads
Lynmore, Rotorua
(Beside Te Ngae Medical Centre)
Ph: 07 562 4846



**2017, 2018 & 2019 Winner
'Best Cafe' Hospitality Awards**

- All day menu
- Free parking
- Outdoor dining
- Award winning coffee
- Group bookings
- Kids play area
- Breakfast Lunch

35 Lake Rd, Ohinemutu, Rotorua
Phone 07 349 4852
thirdplacecafe.nz

OPEN 7 DAYS
Mon - Sun 7:30am - 3:00pm

The ROTORUA i-Site and Information Centre

**Your trusted local
booking centre**



SiTe



**Quality
assurance on all
accommodation
we book**



**100% money
back guarantee
on all bookings**



**Caring and
knowledgeable
local staff**



**The best prices
for activities and
accommodation**

Support and shop local with the Rotorua i-Site
We know Rotorua

Contact us at: 07 348 5179 | info@rotoruaNZ.com
Corner Fenton & Arawa Streets, Rotorua



**Visitor
Information**

Kai time with us



#Tamakimaorivillage

ROTORUA
rotoruanz.com