

AUTUMN/WINTER 20

ROTORUA



**YOUR
GUIDE TO
ROTORUA**

**ON HOLIDAY WITH
JAY-JAY FEENEY**

**ROTORUA BY
NIGHT**

WHAT'S ON



XTERRA ROTORUA FESTIVAL

4th April 2020

The XTERRA Rotorua festival is the biggest multisport event in New Zealand and the biggest XTERRA event held in any location throughout the world. Each year eight events are offered for competitors to choose from which are set in and around Rotorua's beautiful Lake Tikitapu (Blue Lake) and Whakarewarewa Forest. It is without question some of the most amazing scenery for both competitor and spectator.

[xterra.co.nz](https://www.xterra.co.nz)

ROTORUA MARATHON

2nd May 2020

Experience hidden gems, surreal scenery and stunning natural wonders during the Rotorua Marathon. With the iconic full marathon around Lake Rotorua, the Red Stag Timber off-road half marathon, 10km and a 5.5km run or walk to choose from, there is a distance for everyone.

[rotoruumarathon.co.nz](https://www.rotoruumarathon.co.nz)



ARONUI INDIGENOUS ARTS FESTIVAL

September 2020



This three-week festival showcases and celebrates a wide range of indigenous arts from Te Arawa and around Aotearoa. Aronui will feature theatre and dance in week one, visual arts and film in week two and Te Wiki o te Reo Māori Language Week and music in week three. The festival culminates in the Aronui Māori Market at Ōhinemutu on 20 September – enjoy a great range of delicious Māori kai (food) and crafts, and kanikani (dance) to some indigenous beats.

[Aronuiartfestival.com](https://www.Aronuiartfestival.com)



KIA ORA & WELCOME

to the latest edition of the Rotorua Visitor Magazine.

To feel the earth beneath our feet, the wind on our face, fire's warmth on our skin and water's calming nourishment... nature is where we go to feel refreshed, invigorated and relaxed. Rotorua is a place where you can combine all the elements to create the ultimate experience full of wonder, excitement and adventure. The pristine lakes, fertile forests, geothermal wonders and an abundance of attractions and activities mean it's the ideal spot for your next holiday.

When the temperature drops, Rotorua's thermal attractions are the perfect places to keep cosy and warm this winter. As New Zealand's home of spa and wellness there is no better place to relax and unwind than Rotorua. From natural hot pools to luxurious spas to New Zealand's warmest river, you should definitely pack your togs for your winter holiday. If relaxing in a thermal pool isn't for you then there are plenty of other activities to choose, from low impact to high adrenaline and everything in between.

This magazine shows some of the reasons why we love Rotorua. Whether you're visiting for one of our awesome events, a family holiday, getting romantic on a couple's getaway or looking for fun on a long weekend with friends, we know that you'll love it too. Only a three-hour drive from Auckland, or a direct flight from Christchurch or Wellington – Rotorua is your one-stop shop for all things fun and relaxing!

We know you'll love your time in Rotorua and we look forward to seeing you here soon!

2 FEATURED EVENTS

4 WHAT'S ON - EVENTS CALENDAR

6 HOLIDAY IDEAS

8 FIND YOUR ELEMENT

10 A COUPLE'S DAY OUT

12 3 DAYS OF FAMILY FUN

14 ROTORUA BY NIGHT

16 INTERVIEW WITH JAY-JAY FEENEY



RotoruaNZ



DestinationRotorua



+64 (07) 348 5179



RotoruaNZ.com





To keep up to date with everything that's on in Rotorua check out RotoruaNZ.com/whats-on

WHAT'S ON

Rotorua Blues Festival

29 - 31 MAY 2020



A festival of blues with artists from all over New Zealand and Australia.

popblues.com

3D Rotorua Multisport Festival

31 MAY 2020



This festival of events attracts participants from across New Zealand to enjoy some of the best paddling lakes, running and mountain biking trails the country has to offer. All courses are designed for complete beginners to weekend warriors and elite athletes to challenge themselves as little or as much as they wish amongst the beautiful surroundings - as well as having a lot of fun.

activeqt.co.nz/event/rotorua-multisport

Matariki

20 JUNE - 15 JULY 2020



Matariki is a significant time in the Māori calendar, marking the Māori New Year. Celebrations are an opportunity for communities to come together to acknowledge the year gone by and make plans for the year ahead. Festivities will include family events, craft days, talks and musical performances.

rotorualakescouncil.nz/Matariki

Winter Forest Festival

WE RUN THE FOREST

1 AUGUST 2020



We Run The Forest is back and set to be another sell out in 2020. Join us in the stunning world famous Redwood Forest for the coolest winter forest run or walk. There is no reason why winter should hold you back. 5km, 10km and 21km options available.

forestfest.co.nz

GRAVEL ROYALE

1 AUGUST 2020

Rotorua has long been considered a mecca in the world of mountain biking but it's now time for the gravel grinders to rejoice with Rotorua's very own 100% gravel road cycling event. Get your cyclo cross, mountain bike or eBike to take on the inaugural Gravel Royale. 17km and 42km options available.

forestfest.co.nz

WINTER MTB CLASSIC

2 AUGUST 2020

Just minutes from Rotorua's CBD, this is the perfect winter mountain bike challenge for all. Social or serious weekend warrior to World Cup racer. The Winter Classic is the place to be this winter. 15km, 30km and 45km options available as well as eBike options.

forestfest.co.nz



WEEKLY

Rotorua Night Market – Thursdays 5-9pm, Tutanekai St. Food & boutique shopping
Rotorua Farmers Market – Sundays 9am-1pm, Te Manawa. Fresh produce & crafts

Bay of Plenty Steamers

14 AND 27 AUGUST 2020



Catch the Bay of Plenty Steamers in action against Southland Stags on the 14th of August and then take on the blue and white hoops of Auckland on the 27th of August. Both games are 7.45pm kick off at Rotorua International Stadium.

boprugby.co.nz

Tough Guy & Gal Challenge

22 AUGUST 2020



Challenge yourself on a course that includes swamp crossings, a spider's web net climb, crawling under barbed wire, beautiful native bush trails, tunnels, hurdles, a climbing frame... not to mention mud, mud and more mud!

eventpromotions.co.nz

Heads Up

The Pioneer Rotorua

8-13 NOVEMBER 2020



Leaving the South Island for the first time, the 6-Day Pioneer Mountain Bike Stage Race is coming to Rotorua! In true pioneering spirit, riders will experience the brutal nature of the challenge and discover their inner strength as well.

thepioneer.co.nz

GODZone 2020

19-28 NOVEMBER 2020



Also coming to the North Island for the first time is GODZone Chapter 9. This annual, multi-day, non-stop, expedition-style adventure race is the largest of its kind in the world and widely regarded as the best. Fun fact: the specific details of the course and maps remain secret until a few hours before the event starts.

godzoneadventure.com



ROTORUA VISITOR CENTRE & i-SITE

A visit to the i-SITE on arrival to Rotorua will help you uncover the hidden gems that will make your visit truly memorable.

The friendly team of Rotorua experts are more than happy to help you with any questions, recommendations and bookings – so pop in and find the perfect activity for you!

OPEN 7 DAYS

1167 Fenton St, Rotorua

07 348 5179

For more information visit
RotoruaNZ.com/visit



Rotorua Thermal Holiday Park

Situated in relaxing park-like grounds, the holiday park is the closest to the mountain biking tracks in the Whakarewarewa Forest, yet only a few minutes away from the city centre. They are also conveniently located within walking distance to Pohutu Geyser and an 18-hole golf course. Hot mineral pools are also on site.



Cedarwood Lakeside Motel

The Cedarwood Lakeside Motel on the shores of Lake Rotorua is one of the most relaxing motels in town and is your gateway to the very best of Rotorua's world-renowned tourist attractions and activities. This modern and comfortable ground floor accommodation is ideally suited for families, couples and corporates and is located only 10 minutes from the city.



Velocity Valley

This is the place where speed and adrenaline collide. There is the Agrojet, Rotorua Bungy, Freefall Extreme, Shweeb Racer, Swoop and the Freestyle Airbag to keep everyone entertained from 5 to 105 years old. This is the only place where you can sample all of New Zealand's favourite adventure activities in one place.



aMAZE

You're bound to get lost and are guaranteed to have loads of fun finding your way out. At aMAZE your children will delight in the small animal enclosure, aviary and playground - all wheelchair accessible. Everyone can enjoy McGregor's Garden with raised garden beds full of fruit, berries and vegetables in season.



Pig & Whistle Historic Pub

If you're looking for hearty and delicious pub food, a range of wines, beers and spirits, and friendly service, look no further. The Pig & Whistle delivers this - plus live entertainment in the evenings - inside the characterful building and outside in the enclosed beer garden.

📍 Corner Fenton & Arawa Sts, Rotorua

☎ +64 7 348 5179

✉ info@RotoruaNZ.com



Copthorne Hotel

Located near the city centre and surrounded by natural wonders, the four-star Copthorne Hotel Rotorua gives you the best of both worlds. With a gym, pool and tennis court on site there's plenty to do when not out exploring Rotorua's lakes, forests, geothermal wonders and Māori culture.



Scope Cafe

From Scope's à la carte menu, to the vast selection of savoury and sweet culinary delights gracing the counter, everything is attentively prepared and made in house. Wild about flavour, Scope's all-day breakfast and lunch menu is a fusion of delectable wild flavours, combined with a twist, to create mouth-watering dishes.



Hell's Gate

Embrace the earth's raw power and the geothermal wonders found within the Hell's Gate Valley. Enjoy the geothermal mud baths with the unique, silky smooth Hell's Gate mud for its world-famous healing properties. While you are there take a walk around the geothermal valley and discover another world.



Hobbiton Movie Set

Discover the real Middle Earth on this picturesque private farmland near Matamata. Take a two-hour guided tour of the Hobbiton Movie Set from The Lord of the Rings and The Hobbit Trilogy. There are two tours daily from Rotorua.



Mitai Māori Village

An evening at Mitai will give you an authentic introduction to Māori culture, leaving you amazed and in awe. Enter the world of Mitai and learn about the history of this area, which once flourished in villages. See our fierce warriors in traditional dress paddle an ancient warrior canoe (waka) down the Wai-o-whiro stream.



ZORB

Superman dive into a giant inflatable ball and roll down Mt Ngongotaha with ZORB where the fun will have you laughing uncontrollably. Discover four different ball rolling tracks - the world's longest zig-zag Sidewinder Track, the smooth 'n' fast double Straight Track, MEGA Track - the longest, fastest and steepest track in all the land and the Big Air.



FIND YOUR ELEMENT IN ROTORUA

To feel the earth beneath our feet, the wind on our face, fire's warmth on our skin and water's calming nourishment... nature is where we go to feel refreshed, awaken our senses or simply relax.

As we head into that long void of public holidays between Queen's Birthday and Labour weekend, it's important to take time out and reconnect with people. The elements offer this - all four can be combined to create a sense of calm in our non-stop lives.

Water/Wai

The cooler months are the perfect time to be immersing yourself in the geothermal waters that make Rotorua so famous. Not only do they de-stress you but they have natural healing properties as well so take time out to relax and unwind in a natural hot pool or seek out one of the spas and pamper yourself.

Air/Hau

In Māori culture, the four winds represent bringing people together, and the sharing of kai (food) is an authentic way to do this. In Rotorua, you can take a stroll down Eat Street to experience locally sourced cuisine, or you can check out our innovative local artisans at either the Night Market on a Thursday or Farmers Market on a Sunday.

Fire/Ahi

Geysers erupt into the air, mud pools bubble and natural spas emerge from underground, reminding us of nature's incredible forces at play. With many geothermal attractions to discover, you'll be in awe of how these landscapes evolve.

Earth/Whenua

Walking through the depths of the forest with trees towering above, native ferns within arms' reach and the sun peeking through the canopy, is an invigorating feeling. With hundreds of kilometres of walking and mountain biking trails – it's easy to explore Whakarewarewa Forest.

Find your element... in Rotorua

There's nowhere else in the world where earth, wind, fire and water exist in such a potent way. Rotorua is the place to combine all the elements, bringing people and place together to create the ultimate experience.



Earth/Whenua

Inspired by niho taniwha (teeth of the taniwha), this pattern represents the myths and legends of the Māori people. The tapatoru (triangles) symbolise strength and resilience, and mirror the shape of our mountains and forests.



Air/Hau

Four koru designs represent nga hau e wha (the four winds), which were thought to be controlled by tohunga (priests) to help their tribe. This symbol is representative of bringing people together.



Fire/Ahi

The kaokao pattern reflects the burning passion of Māori warriors – arms strong, standing united – as they perform the haka, a fierce display of pride and strength.



Water/Wai

Called the 'life giver of all things', this symbol represents wai giving energy to the koru as it unfurls. The three ripples relate to the lakes, rivers and geothermal waters, which each have their own mauri (life force).





A COUPLE'S DAY OUT

With another hot summer done and dusted, why not plan a cheeky little chilled-out weekend for you and your favourite human? Rotorua has so much to do and it's a great place to relax and rekindle.

MORNING

Sometimes you need to ease into the weekend, right? We suggest starting with a coffee in one hand (**Artisan Café** brews some of the best), your bestie's hand in the other, and taking a stroll along the beautiful **Lake Okareka boardwalk**, one of 18 lakes in the Rotorua region. It's just 12km from the city centre but you'll feel a world away in this small lakeside community.

The walkway starts from a lakeside reserve on Acacia Road and continues for 2.5km around the shore to the outlet. The 90-minute return walk winds through native vegetation, farmland, beach, lake and wetland scenery, and features expansive views and wildlife, including our much-loved dab chicks.

Now that you've got the legs warmed up, why not hit dirt gold on Rotorua's world-renowned mountain biking trails. Head to the **Waipa Mountain**

Bike Park where all the action starts. Hire a couple of bikes, get riding and trail advice, and start the fun. With nearly 200km of trails snaking through the Whakarewarewa Forest, we're not exaggerating when we say there are trails for all levels and interests, whether newbie or shredder. Go for as long as your backside can tolerate, or just a 30-minute blat to clear the city-dweller's cobwebs – it's up to you, but it's always great for a few accomplished high fives and several wobbly giggles.

AFTERNOON

These days, all rides must end with a hot shinny dip or steamy soak in your own fresh-water cedar hot tub, especially since the newest kid in the MTB park, **Secret Spot Hot Tubs**, moved in. Secret Spot has been a hit since day dot and you'll quickly discover why this gem is so popular, as well as a finalist in the Resene NZ Timber Design Awards.

Their cedar shinny dip tubs are the perfect antidote to sore and tired legs and feet (free with beverage or food purchase) but if you have more time, indulge in a semi-private hot tub surrounded by native flora. Friendly tub-side service is available so you can enjoy the café's amazing beer, wine, tea, manuka-smoked coffee, hot pies, cinnamon rolls and more – all sourced as locally as possible.

You might want to spruce up a bit before hitting the town for dinner, and Secret Spot has you covered there, too. Check out their bespoke cedar showers, complete with lockers, hair dryers and rental towels.

Terrace Kitchen should be on your dining hit list, as well as **Eat Street**. Both are located where locals call the "lake end" of town. Terrace Kitchen is fresh, modern, romantic and delish. Dine indoors or out on the covered patio snuggled under fluffy blankets.



LAKE OKAREKA
BOARDWALK



SECRET SPOT

The dinner menu changes daily and offers dishes and tapas to suit any size appetite.

Eat Street is an avenue of eateries all in one spot, ranging from Thai, Indian and Italian to Kiwiana, tapas and fine dining.

Adventurous and outdoorsy types would be remiss if they skipped the chance to fly through an ancient native forest canopy on a network of ziplines, swing bridges, a 50-metre high cliff walk and a controlled descent. **Rotorua Canopy Tours** offers two options for exhilarating eco-tours that you'll remember forever. Small groups and excellent guides top off the experience.



ROTORUA CANOPY
TOURS

Another activity to get the heart racing is whitewater rafting the world-famous **Kaituna River**. Choose from Kaitiaki Adventures, River Rats Raft & Kayak or Rotorua Rafting. The Kaituna offers everything from a gentle grade 2 scenic section, through to full-on grade 5 action featuring the world's highest commercially rafted waterfall.

Get in touch with **River Rats** before your trip if you're keen to have them create a tailor-make full-day package with other Rotorua partners such as **Katoa Lake Rotorua** and **Pure Cruise**.



KAITUNA RIVER

EVENING

If you're looking for something to help you wind down after all this excitement, about 20 minutes south of town is **Wai-o-Tapu Thermal Wonderland**, winner of the Qualmark Sustainable Tourism Business GOLD award. This stunning volcanic park has been thousands of years in the making and is arguably New Zealand's most colourful rainbow of geothermal features and landscape.

You should definitely try to squeeze in a twilight glow worm tour with **Paddle Board Rotorua** if you can. The combination of sunset paddle boarding and magical glow worm caves at night creates a truly unique experience. Wetsuits and water shoes are provided to keep you warm during months outside of summer.

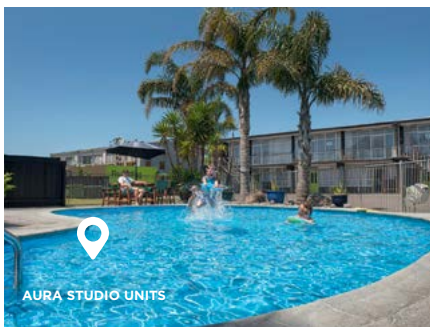
THREE DAYS OF FAMILY FUN IN ROTORUA



RAINBOW SPRINGS
KIWI HATCHERY

Autumn and winter are great times to travel – the temps are cooler for roadies, the busy tourist season is waning, and Mother Nature starts her colourful transformation. Rotorua's central location, natural playground, geothermal features and cultural attractions create the perfect family getaway destination.

DAY 1

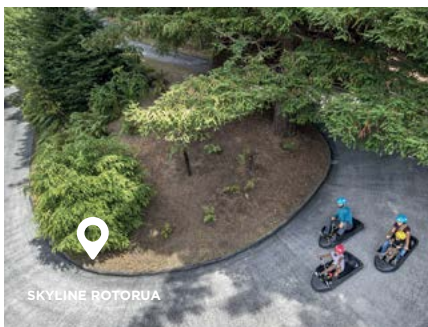


AURA STUDIO UNITS

MORNING

Check into your accommodation (we suggest booking the family studio unit at **Aura** – conveniently located at the lake end of town) and leave the baggage behind, both literally and metaphorically. You're on Rotorua time now which means adventure, nature, spa therapy and dining await.

Before you head out the door, grab your swim gear and head to **ZORB** to zoom down the side of Mt Ngongotaha in a clear, giant, inflated ball. ZORBs can fit up to three people and you've got four tracks to choose from.



SKYLINE ROTORUA

AFTERNOON

Head down the road a bit to **Skyline Rotorua** where a gondola ride takes you up the side of Mt Ngongotaha. At the top, **Market Kitchen** has great options for lunch, including hand-scooped ice creams.

From up here, you can race through the forest on a luge, experience the Skyswing, Zoom Ziplines, Volcanic Hills Winery, and of course take in the beautiful views of Rotorua.



POLYNESIAN SPA

EVENING

After dinner, why not relax in the iconic **Polynesian Spa** complex. There are four different areas to choose from, including family pools, and a menu of soothing massage and spa treatments. A soak in the therapeutic waters is the perfect way to end a busy day and ensure a good night's sleep in preparation for your second action-packed day here!



DAY 2



MORNING

Wakey-wakey, eggs and bac-y – and more – await you at **Capers Epicurean**, one of Rotorua's fave cafés in the CBD. They offer a fresh seasonal menu and hearty cabinet selection to cater to everyone – and there's also a playroom for the kids. Check out the range of yummy food products in The Store on your way out.

Then head 20 minutes south of town to **Waimangu Volcanic Valley** for an up-close-and-personal view of the fascinating geothermal features created by the 1886 eruption of Mt Tarawera. Now a protected scenic reserve and wildlife refuge in pristine New Zealand bush, Waimangu offers a range of self-guided eco-tours of varying length along crater walkways, and boat cruises on Lake Rotomahana to see the reserve's volcanic activity from a unique perspective.

AFTERNOON

If Waimangu whets your appetite for a good, hot soak, this is where your swim gear will be in play again at neighbouring **Waikite Valley Thermal Pools**. These pools are another local fave as they're more off the beaten path and set in a relaxing rural location. Here, several hot pools await, including one for younger kids who enjoy a good splash. The café onsite offers delish, freshly made burgers, chips and salads, as well as beverages for the adults. Take a few minutes to wander down Te Manaroa Spring Walkway and Eco-Trail to the largest single source of boiling water in New Zealand.

EVENING

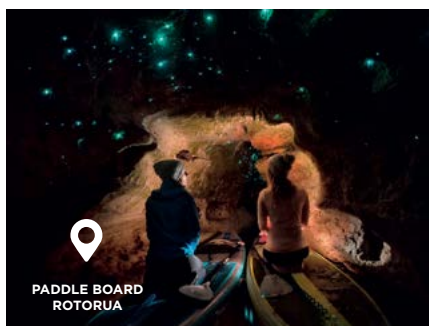
Besides our geothermal playground, Rotorua is world-renowned for our Māori culture. An evening at **Mitai Māori Village** is another must-do while you're here. Watch, hear, feel and even taste the Māori culture come to life through authentic live performances of songs, dances and games, including the fierce haka Māori war dance. Guests never leave a Māori household with an empty puku (stomach), and this holds true at Mitai where you'll enjoy an authentic hangi dinner.



AFTERNOON

One of the best ways to wrap up a fun family holiday in Rotorua is to visit award-winning **Rainbow Springs Nature Park and Kiwi Encounter**, where you can get up close and personal with New Zealand native wildlife such as kiwi and tuatara. Rainbow Springs is very special to us as it's the home of New Zealand's largest kiwi hatchery and rearing facility. It's here you're treated to a behind-the-scenes glimpse at the passionate efforts to save our iconic bird from extinction. The kids will love feeding trout in spring-fed pools, watching a free-flight bird show, and riding The Big Splash, a themed water ride showcasing New Zealand's ecological evolution.

DAY 3



MORNING

Third Place Café is the perfect way to start day three for scrummy, hearty breakfast options before you head to **Paddle Board Rotorua**. The lake is only a 15-minute drive from town. Pick up service is available too. No experience is required and the 2.5-hour tour is perfect for all skill levels. Your guide will take you around the lake to see the most stunning lake locations, perfect for your Instagram snaps and making your friends back home envious.





ROTORUA

You're in Rotorua, the sun is setting but the adventure is only just starting! Discover an array of activities to keep you busy throughout the twilight hours in Rotorua.



THE LUGE AT
SKYLINE

NIGHT TIME ADVENTURE

The Redwoods Treewalk has a bird's eye view as you traverse 700m of walkway amongst 110-year-old redwood trees transformed and brought to life by stunning David Trubridge lighting. For something a bit more adventurous hit the luge tracks at Skyline Rotorua. Enjoy the colourful lights as you twist and turn your way down the track under the stars.



REDWOODS

TAKE IN A CULTURAL EXPERIENCE

The Te Arawa people of the Rotorua region have been guiding people and sharing their culture for over 150 years. Take an opportunity to enjoy an authentic and fascinating introduction into Māori Culture at Mitai Māori Village. You will learn first-hand what makes the Māori culture so special through the stories that have been passed through the generations. Learn and participate in the different art forms including a fiery haka and enjoy a delicious hangi meal.



BY NIGHT



MITAI WAKA



KAYAK CAVE GLOW
WORM TOUR

HIT THE WATER

Nothing beats gliding across the lake as the sun goes down and the glow worms come out to play. River Rats, Waimarino Kayak Tours and Paddle Board Rotorua offer evening trips to learn the history of the area and experience one of the most unique ways to see glow worms in their natural environment.



MEAL AT THE
PIG & WHISTLE

REWARD YOUR TUMMY

After an adventurous day you are bound to be feeling a little peckish! Enjoy the array of great dining options including classic pub goodness at the iconic Pig & Whistle Historic Pub, craft beer and culinary delights at CBK, a buffet on steroids at Stratosfare at Skyline Rotorua or, for something a little more fancy, head to Terrace Kitchen.



INTERVIEW WITH JAY-JAY FEENEY

Radio host Jay-Jay Feeney recently visited Rotorua with her boyfriend Minou. We asked her a few questions about her time here.

What activity would you say is a must-do for people visiting Rotorua this winter and why?

Te Puia! I am a New Zealander and I was so embarrassed by how little I know about Māori culture. My boyfriend, Minou, is from Algeria and it was his favourite place on his whole tour of New Zealand. It's so much fun and the geysers are beautiful. The food is good, the entertainment is great, doing the haka is epic! The beautiful carvings are absolutely gorgeous and the people who work at Te Puia are really fun and knowledgeable.

Also, Hell's Gate Mud bath is incredible. So fun and your skin feels amazing afterwards. I wish I could go there every week.

Are there any hidden gems that you discovered during your visit to Rotorua?

The Squeeze between Rotorua and Taupō is so cool. Take a jet boat out to The Squeeze, then get out of the boat into knee-deep water to squeeze yourself through a narrow canyon of rock wall for 70 metres until you come out to a beautiful, hot waterfall to soak yourself under! Magical.



Do you have any childhood memories visiting Rotorua? If so, what are they and why did they leave a lasting impression?

I don't recall visiting Rotorua as a child. I wasn't that lucky.

What would you recommend people do to relax when visiting Rotorua?

Definitely take advantage of some of the hot pools on offer and pamper yourself at one of the day spas. Also, a nice evening walk among the nightlights of Redwoods Treewalk is quite special.

Would you recommend that other couples visit Rotorua? If so why?

YES! It's such a cool place with so many romantic opportunities. Plus there is SO much to do. I needed more time here to do all of the amazing things I wanted to. Immerse yourself in the culture and enjoy all the pampering!

What are you busy with at the moment?

I host the afternoon Drive show on More FM. I am on air from 3pm til 7pm but I work all day preparing the show. My free time is in the weekends and I make the most of it! I'm saving up to hopefully visit Minou in Algeria and maybe bring him back to New Zealand one day!

When you aren't busy with work what gets you up in the mornings?

Brunch! I love eating out. I love catching up with my friends and having a glass of wine or two. I love watching movies and TV series. I love cooking. I love planning my next trip and adventure.

RUN/WALK ROTORUA

2 MAY 2020

PICK YOUR PACE

ROTORUA MARATHON

RED STAG TIMBER HALF MARATHON

10KM + 5.5KM

**ROTORUA
MARATHON**

www.rotoruumarathon.co.nz



Proudly sponsored by
**ROTORUA
LAKES COUNCIL**

Famously
ROTORUA
www.rotorua.co.nz





ROTORUA CANOPY TOURS

Soar through the trees and experience New Zealand's ancient forest like never before – in two unforgettable zipline adventures. Immerse yourself in this untouched native eco-system filled with towering trees, native flora and beautiful birdsong.

Rotorua Canopy Tours is Rotorua's number one ranked outdoor experience on TripAdvisor. Lose yourself on this engaging encounter with the natural world, exploring ancient native forest via ziplines, suspended swing bridges, treetop platforms and forest trails on this unforgettable nature adventure. There are two unique eco-tour experiences to choose from.

Each tour has a limit of 10 people and your authentic kiwi guides will bring the forest to life as you become part of the conservation story. Every customer who goes on tour contributes to the conservation of the forest. Since 2012 Rotorua Canopy Tours has removed 1000's of pests that were destroying the forest and now, together with their customers, have successfully created a forest eco-sanctuary.

THE ORIGINAL CANOPY TOUR

This award-winning three-hour tour is perfect for all ages. Your kiwi guides will delight and inspire you as you create amazing memories that will last a lifetime. Your guides will show you what New Zealand was once like

from the top of the forest canopy and explain the conservation challenges. In between the thrill of ziplines (flying foxes) and suspended tree bridges, you'll see and hear wood pigeons, tui, North Island robins, bellbirds, tomtits, fantails and more as they flit amongst the tree canopy around you – if you're lucky you may get to hand feed the wild native birds!

THE ULTIMATE CANOPY TOUR

The Ultimate Canopy Tour is a step up in adventure level and is even higher and longer than the award-winning Original Canopy Tour. This next level adventure was created to be the best zipline experience in the world. It includes a suspended cliff-face walkway, swing bridges, controlled descent and an impressive 400m long tandem zipline so you can share the experience of their longest zipline together! Glide across wide open valleys, deep gorges and lose yourself in this untouched forest – it's New Zealand like you've never seen it.





MOUNTAIN JADE

Step into our workshop and meet local artists as they craft jade by hand. Explore the long-standing tradition of New Zealand greenstone carving and discover the beauty of jade.

JADE DISCOVERY TOURS

Every day you can join a free guided tour of our jade carving workshop in Rotorua. While exploring the workshop, you'll see local artists transforming raw stone into carved art and discover the many different stages in the jade carving process. We'll take you on a journey into the important role pounamu plays in Māori culture, exploring its traditional uses and values and uncovering the legends and stories which breathe life into the stone. Tours last approximately 15-minutes and run on request daily between 10am - 5pm, no bookings are required.



YOUR PIECE OF NEW ZEALAND

Founded in 1986, we've grown from humble roots to become a trusted leader in the creation of handcrafted jade carvings. Our designs are steeped in meaning and inspired by the art and culture of New Zealand. Working with many carvers across Aotearoa allows us to bring together the largest and most diverse collection of jade pendants, jewellery and art in the country. No two pieces of greenstone are the same, guaranteeing every carving is unique to you and your loved ones.





WAIMANGU VOLCANIC VALLEY EDUCATIONAL FAMILY DAY OUT

Pack up the family and experience an unforgettable day exploring Waimangu Volcanic Valley – covered in regenerating native forest and fascinating flora, spectacular geothermal features and distinctive birdlife, Waimangu provides entertainment for the whole family.

RICH IN HISTORY

Waimangu's history and legacy lends itself to plenty of rich experiences and stories for the whole family. The area was created following the Mount Tarawera eruption in 1886 – which devastated the area and destroyed what was known as the 'Eighth Wonder of the World', the Pink and White Terraces.

HANDS-ON EXPLORING

Let the kids get hands-on exploring the valley including discovering the temperature of some of Waimangu's amazing geothermal features using one of the digital 'temperature gun' thermometers.

Other highlights include *Frying Pan Lake* – one of the world's largest hot water springs with a surface area of 3.8ha – and the picturesque *Inferno Crater Lake* which rises and falls as it heats and cools.

AUGMENTED REALITY

The wonders of *Inferno Crater Lake's* 38-day cycle can also be uncovered through Waimangu's augmented reality (AR) app.

The app brings to life many of the Valley's fascinating geological insights, like the now-extinct Waimangu Geyser, which regularly erupted in the valley between 1900 and 1904 to heights of over 400m!

Enjoy a boat cruise on Lake Rotomahana – now covering the famous Pink and White Terraces – and let the wonders of AR technology restore the sights that once brought so many intrepid travellers to the shores of the lake, and spark kids' imaginations about the mystery of the terraces' fate.

Waimangu's AR app is free to download on Apple and Android devices. Locations of interest are geo-tagged, allowing visitors to enjoy the natural beauty of Waimangu until there is something hidden to be seen with AR.

Open 8:30am | Last admission 3:30pm





WAIKITE VALLEY THERMAL POOLS, SPRINGS 'N' SPA

100% pure natural geothermal water, direct from the largest single source of boiling water in New Zealand provides a natural geothermal bathing experience for all to enjoy.

ROTORUA'S COMPLETE NATURAL GEOTHERMAL BATHING EXPERIENCE

Waikite Valley Thermal Pools, Springs 'n' Spa is a unique place to experience bathing in 100% pure natural geothermal waters. The boiling, sulphur free, calcite laden waters, direct from the depths of the earth, cascade into our outdoor Settler's Pool, Pergola Pool and Garden Pools, Sit 'n' Soak Pool and Tubs, and provide bathing options for all ages. A temperature range of between 35 and 40 degrees is offered. All pools are drained and refilled daily. Changing facilities, including showers and family change rooms are available.

Private Pool options (bookings recommended) are also available, as is swimsuit and towel hire.

TE MANAROA SPRING

An eco-trail which snakes its way alongside a boiling river leading to the spectacular Te Manaroa Spring provides a face to face encounter with raw natural geothermal activity at its best. A must see!

CAMPGROUND

To complement the pool complex is a simple yet quaint 28 site campground with shower, laundry and kitchen facilities. Being handy to other attractions in the area (just 6kms from Wai-O-Tapu Thermal Wonderland) means Waikite Valley Thermal Pools and Campground is the ideal spot for those passing through by van, motorhome or tenting. Due to popularity, bookings are recommended (info@hotpools.co.nz).

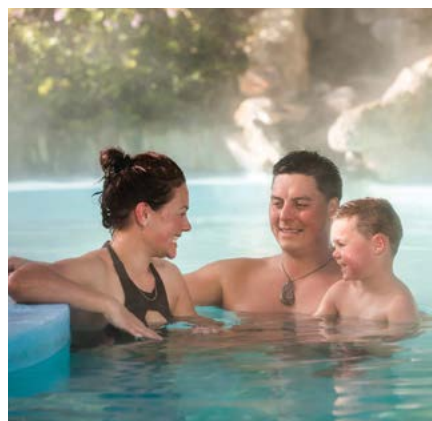
OPENING HOURS

10.00am to 9.00pm Daily
(except for Christmas Day)

First pools drained from 8.30pm.

Pukeko In A Punga Tree Café
open 12.00pm to 7.00pm daily.

Check out our reviews on TripAdvisor.





PARADISE VALLEY SPRINGS WILDLIFE PARK

Interact closely with a range of New Zealand's wild animals, native birds, farm animals and trout, and get up close to a large pride of African Lions.

DON'T JUST LOOK, GET HANDS ON

Animals that are found wild around the country such as deer, goats, tahr and wallabies, as well as a range of sociable farm animals like alpacas, emus and sheep can all be hand-fed throughout the day.

UP CLOSE WITH THE NATIVE BIRDS

Visit the Kea, New Zealand's infamous and comical parrot in their walk-through aviary, see kakariki and kereru birds and meet our friendly tui. Stroll through our waterbird wetland for great views of native and introduced waterfowl, and look out for the different native birds living wild around the park.

CASCADING WATERWAYS

Fern edged pools show off hundreds of rainbow and brown trout. Feed the wild trout in the natural stream and get eye to eye at the underwater window. Look out for large native long-finned eels lazing in their ponds.

NATURE AT ITS BEST

Pathways through native trees lead to our freshwater spring where you can drink straight from the source, then

purchase some of our own bottled 'Paradise Pure' to take away with you. Take our elevated treetops walk in a tranquil and secluded area of the park, putting you up near the canopy of the trees.

THE PRIDE OF PARADISE

There is also a pride of African Lions that can be seen all day in an enclosure that allows visitors to get very close to these wild animals. The afternoon feeding show is a great time to see the lions active and to learn a bit more about the pride.

Paradise Valley Springs is open every day of the year from 8am to dark, with last entry at 5pm. Lion feeding is at 2.30pm everyday, followed by kea and possum feeding at 3pm.

We hope to see you at Paradise soon.





JOIN US FOR THE EXPERIENCE
OF A LIFETIME
THE PATH LESS TRAVELLED

VOLCANIC AIR HELICOPTER AND FLOATPLANE TOURS

Rotorua and the Bay of Plenty abounds with unique places and eerie landscapes that most visitors will miss simply because they're out of sight! Explore more of our stunning lakes district, ancient dormant volcanoes and geothermal reserves with Volcanic Air. Rotorua is truly best appreciated from the air...

Helicopter options include an exclusive landing on **Mount Tarawera**, at 1,111 meters, the highest peak in the Bay of Plenty, offering sweeping views to the Pacific Ocean and the Ring of Fire. This sacred mountain to local Maori is the site of the largest eruption in New Zealand's living memory with views of vibrant and deep craters. Fly over colourful landmarks like **Waimangu Volcanic Valley**, **Wai-O-Tapu Thermal Wonderland** as well as hidden gems like **Tarawera Falls** and Rotorua's crater lakes. Helicopter tours offer the freedom to go anywhere and explore locations other visitors only get to read about.

Floatplane tours offer the romance of taking off and landing from various lakes and rivers in the region. Popular tours include a flyover **Mount Tarawera** and **Waimangu Volcanic Valley**. Feel like the ultimate explorer as you land on the Waikato River and make your way to **Orakei Korako** geothermal park and cave, also known as the hidden valley, where you can explore New Zealand's most colourful geothermal valley.

The newest product is the **Thermal Explorer** available both by Helicopter and Floatplane. This two-and-a-half

to 3 hour tour is a half day cultural and geological immersion into what makes Rotorua unique in the world. Combine the thrill of landing on Mount Tarawera (Helicopter only) with a flight that includes spectacular aerial views of our stunning crater lakes, the renowned **Tarawera Falls** and the vibrant **Waimangu** and **Wai-O-Tapu** geothermal reserves. Land at **Orakei Korako** for a tour of the reserve before returning to Rotorua.

Volcanic Air is conveniently located at the Rotorua Lakefront, a short walk from the city center, Eat Street and many of the city's hotels. With flights starting from \$115 per person and ranging from eight minutes to three hours; whatever your timeframe, budget or interest – there is no reason not to get the best views of the region.

"Our family recently did the scenic floatplane flight from Lake Rotorua taking in the spectacular volcanic landscape. From the very first contact the service was excellent. The views were absolutely spectacular. Landing back on Lake Rotorua on the floatplane was a sublime experience and amazingly smooth. It was worth every cent. Thank you to Steve and staff for an unforgettable flight."

TripAdvisor review January 2020



📍 Memorial Dr, City Lakefront, Rotorua
☎ 0800 800 848 or (07) 348 9984

✉ info@volcanicair.co.nz
🌐 volcanicair.co.nz





Skyline
ROTORUA



there's
more.
to **enjoy**



OPEN 7 DAYS FROM 9.00 AM



Fairy Springs Road, Rotorua



Phone +64 7 347 0027

skyline.co.nz



VOLCANIC HILLS WINERY

LOCAL WINE • TASTINGS • PLATTERS



Present this ad
& receive
a free gift
with your wine
tasting* at the
**Volcanic Hills
Tasting Room**

Join us, up top of the famous Rotorua Skyline Gondola for a wine tasting. Try our range of locally produced wines, learn about wine in New Zealand and enjoy the brilliant view.

Tasting Room Open Daily

11.00am - Last Tasting 5.15pm

Call +64 7 282 2018 for Group Bookings

Walk-ins Welcome



**176 Fairy Springs Road
Rotorua, New Zealand**

*Terms & Conditions Apply.

You must be over 18 to purchase alcohol.

Closed Christmas Day, Good Friday & Easter Sunday.

WWW.VOLCANICHILLS.CO.NZ





HOBBITON™ MOVIE SET

Experience the charm of Middle-earth at Hobbiton, where you can step into the lush pastures of the Shire, as seen in *The Lord of the Rings* and *The Hobbit* trilogies.

THE TOUR

A tour of Hobbiton™ Movie Set is an experience to tantalise the senses of visitors from all across the globe, as guests find themselves engulfed in the sights, smells, sounds and tastes of the Shire™.

Join a tour from Rotorua or travel to Matamata on a journey through the unequivocal beauty of the farmland, and be escorted around the Movie Set, showing the intricate detailing, pointing out the most famous locations and explaining how a slice of New Zealand countryside was transformed into a movie set for one of the largest film franchises of all time.

Your guide will escort you around the set, showing the intricate detailing, pointing out the most famous locations and explaining how the movie magic was made. See Hobbit Holes™, the Mill and venture into the world-famous Green Dragon™ Inn, where you can enjoy a complimentary, exclusive beverage to conclude your own Middle-Earth adventure.

Tours leave daily from the Hobbiton Movie Set Shop.



WHERE THE CENTRE OF THE EARTH MEETS THE SKY.

Witness a land born of myth and legend, where Rūaumoko heats the earth from a world below, boiling mud and billowing steam into the air above.

Journey through native bush that opens up into geothermal landscapes, and bathe in mud and sulphur pools that revitalise the mind, body and soul.

Experience New Zealand's most active geothermal reserve and mud spa as it excites and soothes as it has done for centuries.

www.hellsgate.co.nz

351 State Highway 30
Tikitere, Rotorua
New Zealand



HELL'S GATE



POLYNESIAN SPA

Polynesian Spa is perfect for those seeking to rejuvenate their health and wellbeing and brings you our Mindful Moments retreat to help you switch off from your busy life to bring mind, body and spirit into balance.

Spend two days on our **Mindful Moments Retreat** surrounded by the natural elements of Rotorua and Polynesian Spa's therapeutic alkaline and acid waters. You will be guided through yoga, mindfulness, meditation, wellness workshops and take time to indulge in world-renowned Polynesian Spa therapy treatments.

Mindful Moments is hosted by our highly experienced Spa and Retreat Manager Helena Keenan and inspirational Polynesian Spa Health and Wellness ambassador Rachel Grunwell

This unique geothermal bathing and soul soothing retreat originated here at Polynesian Spa in 2016 and has established itself as a must do health and wellness experience for those wanting to unwind, relax and reset.

BOOK YOUR 2020 MINDFUL MOMENTS RETREAT NOW

16th - 17th May

15th - 16th August

14th - 15th November

Visit www.polynesianspa.co.nz/mindful-moments-retreat for more information and to secure your mindful moments weekend.





EXPERIENCE THE KAITIAKI DIFFERENCE RAFT - SLEDGE - HIKE

Kaitiaki Adventures offers superior and unforgettable white-water rafting, sledging and hiking experiences. We give our clients an initiation into aspects of Maori culture through myth and legends and Karakia (Māori prayer) all whilst experiencing the ultimate adrenaline rush. World class half day experiences.

RAFT THE KAITUNA RIVER WITH OUR WORLD CLASS GUIDES

Snake through steep bush clad canyons and over 14 awesome drops including the highest commercially rafted waterfall in the world: The seven metre high Tutea Falls. Blended with a touch of Māori culture, this trip offers it all, for both white-water rafting enthusiasts and first timers. Grade 5.

KAITIAKI ADVENTURES ARE NEW ZEALAND'S ORIGINAL WHITE-WATER SLEDGING SPECIALISTS

There is something for everyone on this beautiful scenic excursion. Play holes and awesome rapids to negotiate your way through as you are in charge of your own vessel. Take the river on at eye level and propel yourself through the water by the flippers on your feet. Our qualified guides are there to encourage, motivate and help you where necessary.

NEW ZEALAND'S ONLY MT TARAWERA VOLCANIC CRATER WALK

Experience the majesty of Mt Tarawera. Infamous for its eruption on June 10th, 1886, Mt Tarawera created the world's youngest geothermal valley of

Waimangu, at the same time destroying the legendary Pink and White Terraces. This fully guided walking experience encompasses the unique landscape and history of the area.

Beginning with an off-road 4x4 journey through native New Zealand bush, transporting you to the craters edge. With unmatched scenic vistas and 360 panoramic views this experience is ideal for all ages and includes an optional run in to the heart of the volcanic crater.

No previous experience is required on any of the excursions we provide. Kaitiaki Adventures will give you all the training and safety equipment of the highest standard to make it a safe yet unforgettable journey.

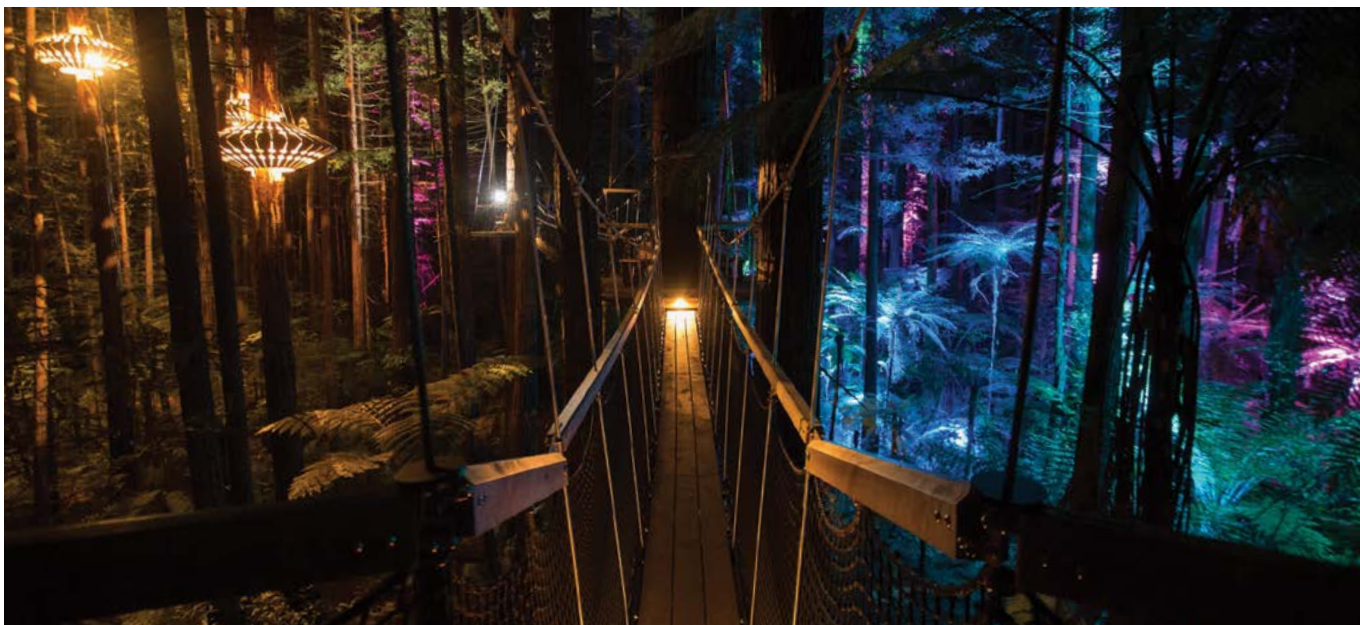
Our world class guides are all NZQA Qualified and our business is QualmarkGOLD Endorsed and a Maritime Safety certified operation.



📍 1135 Te Ngae Rd, Tikitere, Rotorua
☎ 0800 338 736 or (07) 350 1151

✉ info@kaitiaki.co.nz
🌐 kaitiaki.co.nz





A ROTORUA MUST DO: REDWOODS TREEWALK

Experience this must do attraction by both day and night!
It is highly recommended and only 5 minutes from city centre.

The Redwoods Treewalk offers visitors the opportunity to see this natural treasure from a bird's eye perspective, up to twelve metres from the ground. Walk into the canopy of the forest, breathe in the pure air and listen to the chorus of native birds. No rush, just nature and you.

The daytime walk allows for breathtaking views from each of the 22 living decks along the half-kilometre journey. Informative signs allow visitors to take in the full scope of this natural gem.

Open every night, the enchanted forest comes alive with the Redwood Nightlights. The creations of award winning design and conservation icon David Trubridge, this immersive experience ensures that you discover the forest in a whole new light; enhancing the majesty of the Redwoods and the native ferns. This is a truly magical and surreal experience.

A Trubridge spiral & lantern entrance opened in March and a new high walk has just been added featuring see through bridge sections.

Open daily from 9:00 am till late.





REDWOODS ALTITUDE

Enjoy Rotorua's latest gem: a tree top experience into another world.

Your adventure begins on the “jellyfish” – a five-story high suspended spiralling staircase,

from there Altitude awaits – twenty-five jungle themed bridges, each one different and thrilling. Channel your inner adventurer as you make your journey high into the treetops. You'll feel like Indiana Jones' as you make your way across net and rope bridges – even dodging missing planks.

Throw in a few flying foxes for good measure – and this is without doubt the fun adventure you've been waiting for. Minutes from the heart of Rotorua city, in the awe-inspiring Redwood Forest, alongside our award-winning sister attractions, Redwoods Treewalk and Redwoods Nightlights.

SOARING ADVENTURE

Pull on your safety harness, step your way up five stories and into the treetops, then let our professional guides take you on a journey through the canopy of the original Redwoods.

Building on the sustainability ethos we've won awards for, Redwoods Altitude has been built without the use of a single screw, bolt or nail going into the trees.

Instead, the entire experience uses slings and is engineered in a way that doesn't inhibit tree growth.

EXHILARATING, INFORMATIVE – BUT MOST OF ALL FUN!

Throughout the tour, Altitude explorers are guided on their adventure while learning the stories of the forest, our region and its colourful history.

Did you know the Redwood Forest was a location used in Walt Disney's 2016 film *Pete's Dragon*? It's also been described as **'the forest moon of Endor'** by *Star Wars* fans.

Tours depart every hour from 10am, and take about two hours, leaving plenty of time to explore the rest of Rotorua. All equipment is provided – you just need to bring your sense of adventure.

Height, weight and health restrictions apply. For more information and bookings, visit www.treewalk.co.nz.

Check out our Facebook page: [altitude.nz](https://www.facebook.com/altitude.nz) and Instagram [@altitude.nz](https://www.instagram.com/altitude.nz).





SELF-DRIVE RAIL CARS RAILCRUISING

Imagine sitting in control of your own rail car travelling along a railway line with nothing ahead but the unobstructed curve of the rail stretching out into the distance.

RailCruising is the new tourist activity that allows people just like you the ability to travel along railway lines in your own powered self-drive, 4-seat railway vehicle called the RailCruiser.

The rail journey of 20km takes approximately 1.5 hours return through the beautiful Dansey Native Forest and rolling farmland with views out over Lake Rotorua. Listen to the commentary and discover a unique piece of New Zealand railway and local history.

The RailCruiser has comfortable seats with unobstructed views, is fitted with clear drop-down waterproof sides, windscreen wipers, blankets provided and comes with onboard heating.

RailCruising is a special experience to be shared with family and friends. It is popular with clubs and social groups with many combining RailCruising with lunch or dinner at the iconic Mamaku Railway Station.

How does RailCruising work? Groups of RailCruisers spaced apart, travel 10km together in one direction from Mamaku Railway Station to Tarukenga Railway Station. At Tarukenga the Rail

Cruisers are then turned and head back to Mamaku.

Cruising along at 20km/hr, you can listen to the audio tour and discover a unique piece of New Zealand railway history. This is the ultimate way to experience a railway.

The RailCruiser V3000 is the world's first fully automated, state of the art petrol-electric four seat self-drive hybrid rail vehicle. The RailCruiser has comfortable seats with unobstructed views, is fitted with clear drop down waterproof sides and comes with onboard heating.

Trips depart daily from Mamaku Railway Station at:

11am, 1pm & 3pm (Nov-Apr)
and 11am & 1pm (May-Oct).

Bookings are essential.

"What a great innovation! These little trains take you on a wee journey of 19km's return through the native forest seeing Farmland and Lake Rotorua."

Recent TripAdvisor Review





ROTORUA HERITAGE FARM

Rotorua Heritage Farm presents “Family Fun for everyone”. We offer fun, exciting and educational activities for all visitors - The Farm Tour, 3D Trick Art, Farmside Buffet.

THE FARM TOUR

An hour long tour led by a qualified team of guides, includes meeting nursery animals, travelling through our farm environment on covered trailers while experiencing and feeding farm animals with the guide providing educational information about the farm and its livestock. The experience concludes with a world class exhilarating dog show and sheep shearing performance.

3D TRICK ART

A 3 dimensional experience of 50 paintings that all ages can enjoy and is a first in the New Zealand market. It offers an educational, creative and imaginative experience. 3D Trick Art has been rated as 2nd out of 68 attractions in Rotorua according to Tripadvisor.

FARMSIDE BUFFET

Based on a kiwi farm landscape, Farmside Buffet offers a superb lunch buffet and a stunning venue for the special events.





THE LIVING MĀORI VILLAGE - WHAKAREWAREWA

Nowhere else in the world do you have the opportunity to visit and engage with Māori at home in a working village – built in a geothermal valley.

WELCOME TO OUR VILLAGE

Nestled in a geothermal wonderland, Whakarewarewa – The Living Māori Village is one of New Zealand's oldest, iconic and most authentic destinations, offering an unforgettable day out.

Our village is home to the Tūhourangi Ngāti Wāhiao people. We invite you, our manuhiri (guests) to enjoy a tour with one of our local village guides. Learn about genuine Māori culture and traditions – all set in a living village where our whānau (family) have lived for generations.

BACKYARD DELIGHTS

Gain insights into life in a thermal village where our whānau still utilise geothermal activity for our warmth, cooking and bathing.

You'll be amazed at our backyard! We have bubbling mud, steaming mineral pools and erupting geysers, including Pōhutu Geyser, New Zealand's largest and most active geyser.

MAKE MEMORIES

Experiencing an authentic Māori cultural performance is a must do for every New Zealander and overseas guest. At Whakarewarewa we offer twice

daily concerts, which includes our own fearsome haka. Take some time and sample some local kai (food); there's traditional hangi cooked by geothermal steam boxes, or our world-famous-in-New-Zealand Hangi Pie, which will delight the foodies!

Explore beyond the village with our self-guided nature walks, walking around boiling mud pools, coloured lakes and lush native New Zealand bush.

Come and visit our beautiful home and enjoy our famous manaakitanga (hospitality), set in a bubbling and steaming geothermal wonderland.

Open daily - 8.30am – 5.00pm.



📍 17 Tryon St, Whakarewarewa
☎ (07) 349 3463

✉ info@whakarewarewa.com
🌐 whakarewarewa.com





EXPLORE SPECTACULAR NATURE AND GEOTHERMAL WONDERS

Just 20 minutes drive south of Rotorua, discover Wai-O-Tapu Thermal Wonderland.
CASHLESS Site – all major credit cards and EFTPOS are accepted.

Nestled in a natural bush setting and sculpted over thousands of years by volcanic activity, a series of defined tracks create a unique and wondrous experience.

“One of the 20 Most Surreal Places in the World” Trip Advisor

Explore spectacular nature at New Zealand's most colourful natural volcanic park. Walks through this unique geothermal area take between 45 and 90 minutes and provide a wide range of amazing photo opportunities and features including the world famous Champagne Pool, naturally coloured hot and cold springs, steaming ground, expansive vistas, huge volcanic craters and sinter terrace formations.

The Visitor Centre incorporates a souvenir retailing area, Café and ‘Sky Deck’ with indoor and outdoor seating. Picnic spots are available both inside the park and in our parking areas.

LADY KNOX GEYSER PRESENTED DAILY AT 10.15AM

Set in its own amphitheatre, a short drive from the main park is the Lady Knox Geyser which is presented daily at 10.15am. This provides a unique

opportunity to see a geyser in action. A knowledgeable guide tells the story of the geyser every morning by way of introduction to the eruption.

OPEN DAILY

Winter: 8:30am to 5:00pm (last admission 3:45pm)

Summer: 8:30am to 6:00pm (last admission 4:45pm)

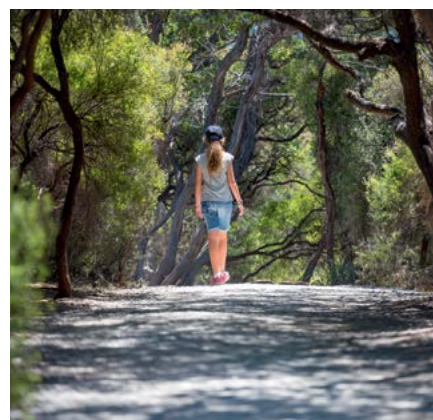
Christmas Day – 25 December: 8:30am to 5:00pm (last admission 3:45pm)

Wai-O-Tapu Thermal Wonderland is open daily – 365 days of the year including all Public Holidays. Wai-O-Tapu Thermal Wonderland is Smoke Free within the visitor centre and geothermal park.

Tickets to the geothermal park and Lady Knox geyser can be purchased online. Alternatively, ticket purchases are available at the visitor centre. It is advised to complete your ticket purchase by 10am if you are attending the Lady Knox Geyser show.

Book online for 10% OFF Use promo code FAMOUS

Discount available for online tickets only (excluding family tickets). For your own safety, please ensure you and your children stick to the walkways, stay behind the barriers and obey the safety signs.





ORAKEI KORAKO — CAVE AND THERMAL PARK

Quoted by Lonely Planet Travellers guide as “arguably the best thermal area in New Zealand”: A self-guided walk of 2.5km which takes about 1 to 1.5 hours.

Situated just 25 minutes north of Taupo and 45 minutes south of Rotorua, nestled on the shores of Lake Ohakuri lies “The Hidden Valley” of Orakei Korako Cave and Thermal Park. Orakei Korako translated means “The Place of Adorning”.

Wander through a valley of unbelievable colour, bubbling hot springs, gushing geysers and unimaginable natural beauty preserved by its isolation from the outside world. Scenes from BBC’s Natural History Series “Walking with Dinosaurs” were filmed at Orakei Korako. Look down into Ruatapu Cave, one of only two geothermal Caves known to exist in the world and an experience not to be missed. 120 feet down a thermal mirror pool is situated at the bottom.

Lonely Planet Travellers Guide writes; “Orakei Korako is arguably the best thermal area left in New Zealand”.

Access to Orakei Korako is by ferry, at no extra charge. Average sightseeing time is about 1 hour. Ferries do not run to a timetable, so you may visit the valley as soon as you arrive if you wish.

Go to <https://www.orakeikorako.co.nz/visit/book-now> and enter the code **Rotoruamag20** to receive a discount.



DRIVEN BY ADVENTURE!

Set amongst the stunning backdrop of New Zealand forest, enjoy impeccable safety and highly interactive adventure experiences for all ages and abilities. Operating since 1992.



With a visit to Off Road NZ you will be driven by adventure! For half an hour or most of the day, there is a range of self-drive activities to keep you entertained.

4WD BUSH SAFARI

Buckle in behind the wheel of one of our 4WDs into a journey of the unknown. In amongst our stunning native forest the



challenges come thick and fast.

MONSTER 4X4 THRILL RIDE

Take on the monster! It's huge, it's loud, it roars with V6 power. Hold on tight for the ultimate thrill ride!

RACELINE KARTING

The fast track to excitement. Experience



the buzz and adrenaline of kart racing on our 1.2km outdoor circuit, reach up to 100km/hour on the 150m straight.

CLAYBIRD SHOOTING

Test your skills and accuracy! With real shotguns and live ammunition. It's not as easy as it looks.

📍 193 Amoores Rd, RD2, Rotorua
☎ (07) 332 5748

✉ drive@offroadnz.co.nz
🌐 offroadnz.co.nz



ZORB ROTORUA – ICONIC NZ INVENTION

Superman dive into a giant inflatable ball and roll down Mt Ngongotaha with ZORB, where the fun will have you laughing uncontrollably.



Discover FOUR different ball rolling tracks – the world's longest zig-zag Sidewinder Track, the smooth 'n' fast double Straight Track, MEGA Track -the longest, fastest and steepest track in all the land, and the newest track; Big Air, our latest thrill ride. Ride with water or without water, the choice is yours!



The experience of rolling down a hill inside a giant inflatable ball has been an iconic adventure experience since Andrew and David Akers invented and developed the first ever ZORB site in the world back in 1997 at this very location!



To this day, Rotorua is the ONLY location in New Zealand where you can experience this amazingly fun and bizarre bucket list activity. Suitable for all ages and abilities.

☎ (07) 343 7676 or 0800 646 768
✉ info@zorb.com

📍 525 Ngongotaha Rd, Fairy Springs, Rotorua
🌐 zorb.com



DRIFT KARTZ

Race on one of the slipperiest indoor go kart tracks in New Zealand.
With the best price on go karting in Rotorua.

Try out our purpose built slippery indoor go-kart race track. Perfect for all weather conditions.

Our race track has a special coating giving you one of the most difficult racing surfaces you will ever encounter, making for an out of control racing experience.

Imagine trying to control an out of control race car! That's what DriftKartz is all about.

Come and try out our new 400cc kartz!

Great for:

- **Team building**
- **Corporate events**
- **Sports teams**
- **School**
- **Social clubs**



📍 10 Old Taupo Rd, Rotorua
📞 (07) 345 6211

✉️ admin@driftkartz@xtra.co.nz
🌐 driftkartz.co.nz



ROTORUA DUCK TOURS

Explore Rotorua's natural landscapes on New Zealand's only WWII Landing craft, 'The Duck'.
Our tours offer a great introduction to Rotorua with an educational commentary, perfect for all ages.

While you enjoy the incredible scenery and travel in the volcanic craters of Rotorua, your legendary "Conductor" will bring Rotorua alive by retelling the stories of the past, along with providing information on Maori culture, geothermal wonders, historic sights, flora and fauna. The ducks have clear, roll down sides and on cold days we also have blankets available making the Duck suitable for any weather condition.

Two tour options available, the Rotorua City and Lakes Tour (90min) and the Tarawera and Lakes Eco-Tour (120min) running every day in all weather. Language translation sheets available. Our Tarawera & Lakes Eco-Tour is a more focused look at Rotorua's rich history and environment.



📍 1241 Fenton St, Rotorua
📞 (07) 345 6522

✉️ info@ducktours.co.nz
🌐 rotorua ducktours.co.nz



KATOA LAKE ROTORUA

Uncover Lake Rotorua on and off the water. Experience the thrill of jet boating, discover Mokoia Island's ancient history or cruise through our crater lake.



FEEL THE THRILL

Experience the white-knuckle rush of a 30 minute jet boat tour on Lake Rotorua while passing by iconic landmarks such as Kawaha Point, Mokoia Island & Sulphur Bay. Learn the history of the area & people past. Suitable for all ages.



DISCOVER THE CULTURE

Uncover an ancient wildlife sanctuary with deeply rooted Māori history on Mokoia Island. Bird watching, Māori Culture and Geothermal activity all await you on this guided tour. Choose between our Speed & Spins tour or Water Taxi for your exclusive access to Mokoia Island.



PARASAILING

Feel the exhilaration of free flight up to 400 feet in the air, while being treated to a truly unique view of Lake Rotorua and surrounds. Solo, Tandem & triple flights available. Maximum weight 200kg. Or try our SKYJET combo which includes both jet boating & parasailing.

PO BOX 1193, Rotorua
0800 538 7746

info@katoalakerotorua.co.nz
katoalakerotorua.co.nz



LAKEVIEW GOLF AND COUNTRY CLUB

Come and enjoy a unique 18 hole par 72 golfing paradise with stunning views where everyone is welcome.



The golf course has undulating fairways and challenging greens with stunning views overlooking Lake Rotorua and Mokoia Island. Hazards include bunkers and bush clad gorges. As you play your round of golf you will enjoy the spectacular vistas across Lake Rotorua of Mount Tarawera and Mount Ngongotaha which stand



proudly steeped in local history in the Rotorua landscape. The peace and tranquility of Lakeview and the sounds and antics of native birds such as the Tui, Bellbird, Fantail and Kereru will add to this unique golfing experience. The club has a fully stocked pro shop and covered driving range for all your golfing needs. Clubs, trundlers and



electric carts are available for hire. Catering and bar facilities are available on Tuesdays, Saturdays and Sundays, other days by arrangement. Hold your corporate day or staff function with us this year! All enquiries can be made by contacting the Pro Shop.
Mention this ad and receive 10% off your green fees.

(07) 357 2341
lakeview@golf.co.nz

lakeviewgolf.co.nz
704 State Highway 5, Tarukenga, Rotorua



SECRET SPOT HOT TUBS ROTORUA

Newest Rotorua attraction, hot tubs, craft beer and cider, Manuka roasted coffee, experience “Shinny dipping” in a lovely place, while sharing your adventure with friends.



Secret Spot Hot Tubs Rotorua is a place of relaxation. Nestled in the Whakarewarewa Forest, enjoy a steaming hot tub with up to 6 friends. The Cedar hot tubs are filled with forest fresh spring water, environmentally filtered and treated, while being sustainably heated. Share your days adventures over a drink



in the tub with push button drinks service... awesome! Alternatively, enjoy a “Shinny Dip” foot hot tub, FREE with any drinks purchase. Chilled Good George craft beer and cider are on tap, tasty wines, Manuka roasted coffee and hand-crafted teas. Indulge in fresh bakery food, all set in beautiful landscaping which people are



raving about. Open 7 days, 9am - 10pm daily. Located on Rotorua's doorstep, in the heart of New Zealand's mountain biking mecca. Discover your own secret spot after your day's adventures.

📍 13/33 Waipa State Mill Rd, Rotorua
☎ (07) 348 4442

✉ info@secretspot.co.nz
📱 secretspothottubs



RAINBOW SPRINGS NATURE PARK

Play, discover, explore! Rainbow Springs is proudly home to some of New Zealand's rarest species, and the world's largest kiwi hatchery!



Fun and nature combine to create the ultimate day out! Learn and see New Zealand's unique wildlife with our complimentary guided park tours, visit our national icon in the new, interactive Kiwi Burrow and see real conservation in action with a National Kiwi Hatchery tour.



From kiwi to kea to kaka to tuatara, Rainbow Springs is home to a large range of rare and fascinating wildlife. Our knowledgeable guides are passionate about sharing New Zealand's wildlife story with you.



Enjoy the new Taonga Experience, the range of fun activities sprinkled throughout, and finish your visit off with a ride on the Big Splash! Rainbow Springs really is a jam packed day out. Our park residents and team look forward to welcoming you.

📍 192 Fairy Springs Rd, Rotorua
☎ (07) 350 0440 or 0800 724 626

✉ info@rainbowsprings.co.nz
📱 rainbowsprings.co.nz



MAMAKU BLUE – BLUEBERRY EXPERIENCE

Welcome to the wonderful world of blueberries. You will be amazed at the many products made from these little globes of health.



Famous for their delicious blueberry juice, ice cream, chutneys, jams and award-winning wines and liqueurs, Mamaku Blue Blueberry Farm create the only blueberry experience of its type in NZ where, at the blueberry shop, you can see and taste these miracle berries made into more products than you ever thought possible.



You can shop online for all our blueberry and gooseberry products including frozen berries, jams, health powder, gift baskets and more.

Full of healthy antioxidants and natural vitamins, our 100% blueberry juice has people around the world talking about how it has helped with health problems



such as kidney failure, energy levels and eyesight.

While you're there, visit our Blueberry Café and indulge in our world famous (on Trip Advisor) blueberry pancakes, crepes, and other taste sensations. Or get behind the scenes in one of our escorted orchard and farm tours.

📍 311 Maraeroa Rd, Mamaku
☎ (07) 332 5840

✉ info@mamakubblue.co.nz
🌐 mamakubblue.co.nz



AMAZEME ROTORUA – “HAVE FUN – GET LOST!”

Old fashioned family fun for all ages. 1.4 km of hedges, giant board games, small animals, picnic areas and many other activities.

aMAZEme opened in 2010 with family fun in mind, a destination where two or three generations can come and have a great time together, in a lovely relaxing environment, whilst enjoying their own picnic.

We have a range of games including, tic-tac-toe, tug of war, balance bar wipe out, sack races, swing ball, frisbees, giant connect four, giant ludo, giant snakes & ladders and giant checkers. The prime attraction is of course our 1.4km Hedge Maze, with an average completion time of 20mins (parents, don't let your children win!). For those who like small animals, we have rabbits, doves and zebra finches.

Mention this ad and get 10% off the normal retail price.



📍 1335 Paradise Valley Rd, Rotorua
☎ (07) 357 5759

✉ amazeme@xtra.co.nz
🌐 amazeme.co.nz



ULTIMATE JET BOAT ADVENTURE

At New Zealand RiverJet we specialise in the extraordinary jet boat experience with tours to two of this country's most unique destinations.



Thermal Safari (2.5 Hours) - Orakei Korako, also known as the "Hidden Valley" is rated by Lonely Planet Travel Guide as one of the top 5 geothermal parks in the world. It is New Zealand's largest geyser field and home to the stunning silica terraces, the Sapphire Geyser and one of only two Geothermal Caves in the world.



The Squeeze (2.5 hours) - Prepare for the perfect fantasy experience with the serenity of New Zealand's untouched nature, the adventure of squeezing through tight rock passages and the refreshment from dipping in a geothermal waterfall. Immerse yourself in the soothing waters of this naturally heated hot spring.



Scenic Blast - A 50 min Jet Boat Tour down the mighty Waikato River and into the stunningly beautiful Tutukau Gorge. See native birds, plush farmland and 50m high canyon walls before returning back at high speed for the thrill of a lifetime.

📍 1 Tutukau Rd, Mihi
📞 (07) 333 7111 or 0800 RIVERJET

✉️ sales@riverjet.co.nz
🌐 riverjet.co.nz



Lady Janes Ice Cream Parlour

fresher, brighter & yummiier than ever

relax, indulge & check out our new look:

- Over 50 flavours
- Danish Waffle Cones
- Sundaes
- Warm Desserts
- Milkshakes
- Smoothies
- Coffee



@ladyjanesicecream

1092 Tutanekai St (Eat Street) | Rotorua

VELOCITY VALLEY ADVENTURE PARK

Velocity Valley, where speed, adrenaline and fear collide. Experience iconic New Zealand inspired activities within one location.



Velocity Valley is the home of speed and adrenaline, catering for all ages and adventure abilities. Located within the sweeping hills of Paradise Valley in Rotorua for over 20 years.

Feel the high-speed acceleration as you drift our sprint course with the furiously fast Agrojet.



Live out your wildest dreams and fly like a bird defying gravity 9m above the ground with Freefall Xtreme. Why not let us turn your biking experience upside down in our pedal powered pods with Shweeb Racer or leave you screaming for more with the Swoop giant sky swing as you share the fear with friends or family.



Lastly the ultimate and unforgettable adrenaline rush of bungee jumping from 43m high above the ground.

With so much to offer in one location we have multi-ride packages for individuals and families alike.

***See website for more details.**

📍 1335 Paradise Valley Rd, Rotorua
☎ 0800 949 888

✉ reservations@velocityvalley.co.nz
🌐 velocityvalley.co.nz



Wellness for every body Mind, Body and Spirit

› Clinical Psychology › Physiotherapy › OT › Spa and Beauty › Recharge and Clinical Programmes › Exercise classes

See our website for full comprehensive details



www.qehealth.co.nz › 1073 Whakaue Street, Rotorua › email: info.line@qehealth.co.nz › Tel: 07 348 0189

ONE OF NEW ZEALAND'S MOST BEAUTIFUL DAY WALKS

Lake Tarawera has amazing natural beauty, a geothermal beach and is rich in Maori history just 12km from Rotorua.

The 15km Tarawera Trail walk at Lake Tarawera, Rotorua is one of the great day walks in New Zealand.

It starts just south of the famous Buried Village devastated in the 1886 Tarawera eruption and finishes at Hot Water Beach.

Reward yourself at the end of your walk with a soak in the geothermal lake waters after your stunning forest and lake-edge walk.

Then catch the Water Taxi back that includes a free shuttle back to your starting point. Average 5hr duration.

Check out our other tours, walks and private glamping options.



📍 **The Landing, Tarawera Rd, Rotorua**
☎ **(07) 362 8080**

✉ **info@totallytarawera.com**
🌐 **totallytarawera.com**



TE PUIA

The Centre for New Zealand's Māori Culture and Geothermal Wonders.



Spanning 70 hectares, Te Puia is home to the world famous Pōhutu Geyser, bubbling mud pools, live kiwi birds and stunning Māori architecture. Visitors have an opportunity to see Māori cultural performances and tour our national schools of carving and weaving.



Hourly guided tours share stories that were passed down from our ancestors.

Our brand new restaurant, Pātaka Kai, also serves a mouth-watering banquet of authentic Māori kai (cuisine) overlooking the magnificent Pōhutu Geyser.



Te Puia|New Zealand Māori Arts and Crafts Institute is an iconic destination for visitors from near and far.

Open 365 days: Summer 8am-6pm, Winter: 8am-5pm.

📍 **Hemo Rd, Rotorua**
☎ **(07) 348 9047 or 0800 TE PUIA**

✉ **reservations@tepuia.com**
🌐 **tepuia.com**



BURIED VILLAGE

New Zealand's most visited archaeological site where stories of the Tarawera eruption come to life.



The Tarawera Eruption destroyed the village of Te Wairoa, the Pink and White Terraces and with it the birthplace of tourism in New Zealand.

Encounter first-hand how this historical New Zealand event devastated the landscape and lives of the people of Te Wairoa.



Exhibitions in the award winning museum share remarkable stories of human resilience, tragedy and survival.

Walk over 1km of excavated heritage sites and see where the people of Te Wairoa lived and worked. Challenge the kids to Smithy's treasure hunt.

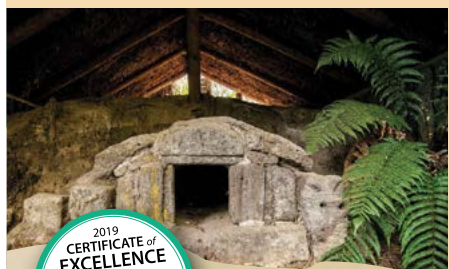
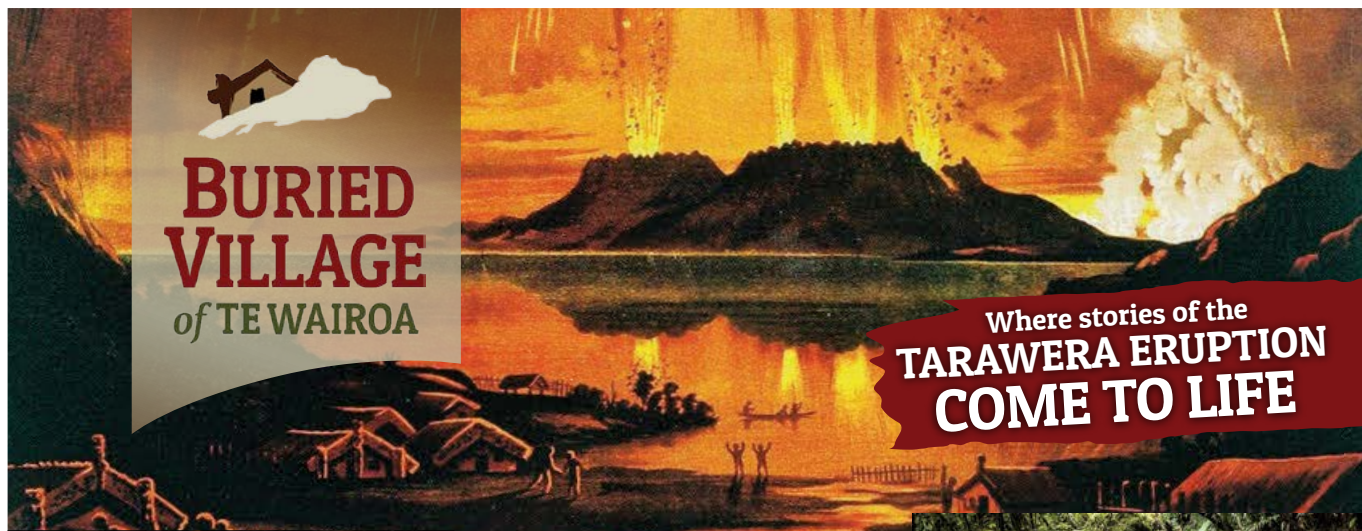


Complete your visit with a beautiful stream side walk showcasing New Zealand native flora and fauna. Stand in the spray of the 30m Te Wairoa Falls as it plunges over the Waitoharuru cliffs. Enjoy a scenic 15 minute drive from the city centre. Allow approximately 1-2 hours

Open 9-5pm Daily

📍 1180 Tarawera Rd, Rotorua
📞 (07) 362 8287

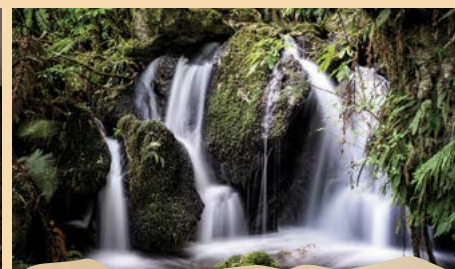
🌐 buriedvillage.co.nz



#BuriedVillage
#BuriedVillage



**HERITAGE CARD
AVAILABLE**
FOR LOCALS & NZ RESIDENTS



OPEN 7 DAYS
1180 Tarawera Road, Rotorua
www.buriedvillage.co.nz

THE SPA AT MILLENNIUM HOTEL ROTORUA

Reward yourself with a relaxing experience at The Spa, Millennium Hotel Rotorua.
Let us take care of you - mind, body & soul.

MASSAGE, BEAUTY & BODY THERAPIES

Warm serene waters and soothing treatments await the body looking for relaxation and revival. With a luxurious menu of over thirty different massages, facials, body and beauty treatments, reward yourself with a truly indulgent experience.

Soak in the thermally heated hot pools, leave feeling refreshed and rejuvenated.

Air conditioned therapy rooms for all year comfort winter or summer.

Open 7 days 9am - 8pm

FOOD & BEVERAGE OPTIONS

Order a delicious tasting platter, a light lunch or a glass of bubbles to enhance your spa experience!



📍 **Millennium Hotel Rotorua, cnr
Eruera & Hinemaru Sts, Rotorua**

☎ **(07) 349 9635**
✉ **thespa@millenniumhotels.co.nz**

The Spa
— Rotorua —

AGRODOME

Get up close with a range of furry and feathery friends with Agrodome's iconic Farm Show and Farm Tour! Its the ultimate farm experience.



Located on 350 acres of lush working farmland only 10 minutes from Rotorua city centre, Agrodome is the perfect day out for everyone.

Millions of visitors from all over the globe have been wowed by our Farm Show and Farm Tours.



Our fun-filled Farm Show takes you on a journey of New Zealand farming in action. Learn about and watch sheep-shearing, cow milking, stock auction, baby animal feeding, sheep dog demonstrations and much much more! Tickets to the Farm Show include access to our Farmyard Nursery, home to baby animals all year round.



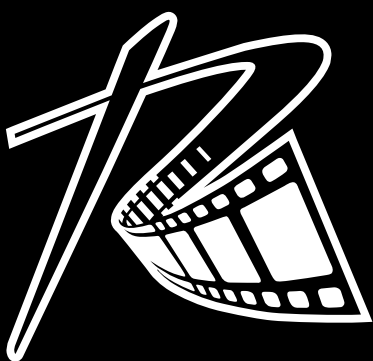
Our guided Farm Tours allow you to explore our real-life farm, getting up close and personal with a range of furry and feathery friends. Hand-feed the animals, taste our produce and see a real life working farm and orchard in action!

📍 **141 Western Rd, Rotorua**
☎ **(07) 357 1050**

✉ **info@agrodome.co.nz**
🌐 **agrodome.co.nz**



Agrodome
The Unique Farm Experience!



THE HOME OF AMAZING VALUE

**ALL DAY
EVERY DAY**

WWW.READINGCINEMAS.CO.NZ

1281 ERUERA ST, **ROTORUA** 07 349 0061



BIBLEWORLD MUSEUM & DISCOVERY CENTRE

A great place for adults and children to explore what life was like in Biblical times.

Enjoyable and educational! Check out the detailed handcrafted scale models in our Old and New Testament galleries. See over 70 ancient artefacts used in Biblical times. Try out a range of hands on activities, electronic quizzes and interactive maps.

Adults and children can dress as a Roman soldier, blow a shofar, smell frankincense and myrrh, play the ancient game of Senet and much more.

See website for opening hours.

Free Entry for all visitors!

📍 1141 Eruera St, Rotorua
☎ (021) 909 842
✉ bibleworld@xtra.co.nz
🌐 bibleworld.org.nz



HORSE TREKKING LAKE OKAREKA

Horse and pony rides through native bush, over green pastures and spectacular views of Lake Tarawera.

Rides to suit all abilities from beginners to experienced riders. Experienced riders are able to trot and canter. Daily departures at 10am, 1.30pm, and times to suit. Various trekking routes on offer, depending on weather, trail conditions and rider experience. Trek through dense native bush, onto green

pastures, across sheep and cattle country, and to the top of the farm with views over Lake Rotorua, Lake Okareka, Lake Tarawera, Lake Rotomahana, Lake Okataina, the Green Lake and Mount Tarawera. What a fantastic way to enjoy the fresh air and experience the region. Treks from 30 minutes to 3 hours.

📍 51 Acacia Rd, Lake Okareka, Rotorua
☎ (021) 292 2233
✉ lucy@treklakeokareka.co.nz
🌐 treklakeokareka.co.nz





BLUE LAKE TOP 10 HOLIDAY PARK - ROTORUA

The best of both worlds – close to attractions and shops yet far enough from the bustling city to enjoy the peace and quiet, and avoid the sulphur smell.

Get the best of both worlds at Blue Lake Top 10 – close to the vibrant attractions and shops, yet you can still enjoy the peace and quiet away from it all (and avoid the sulphur smell).

Rotorua's only TOP 10 Holiday Park located on the picturesque and stunning Blue Lake, we offer an abundance of accommodation styles, from lake-view motels to self-contained units, or kitchen and standard cabins. There is quality accommodation to suit any sized group or budget.

Choose from large powered and non-powered sites, set on 10 acres, surrounded by native bush.

Blue Lake TOP 10 is located in the perfect spot to take advantage of Rotorua's 15 beautiful lakes. Just across the road from Lake Tikitapu and a short 5-minute drive from Lakes Okareka or Tarawera, you can enjoy water activities galore - swimming, boating, fishing, kayaking or simply relaxing on the beach. Blue Lake TOP 10 is the perfect base for your holiday.

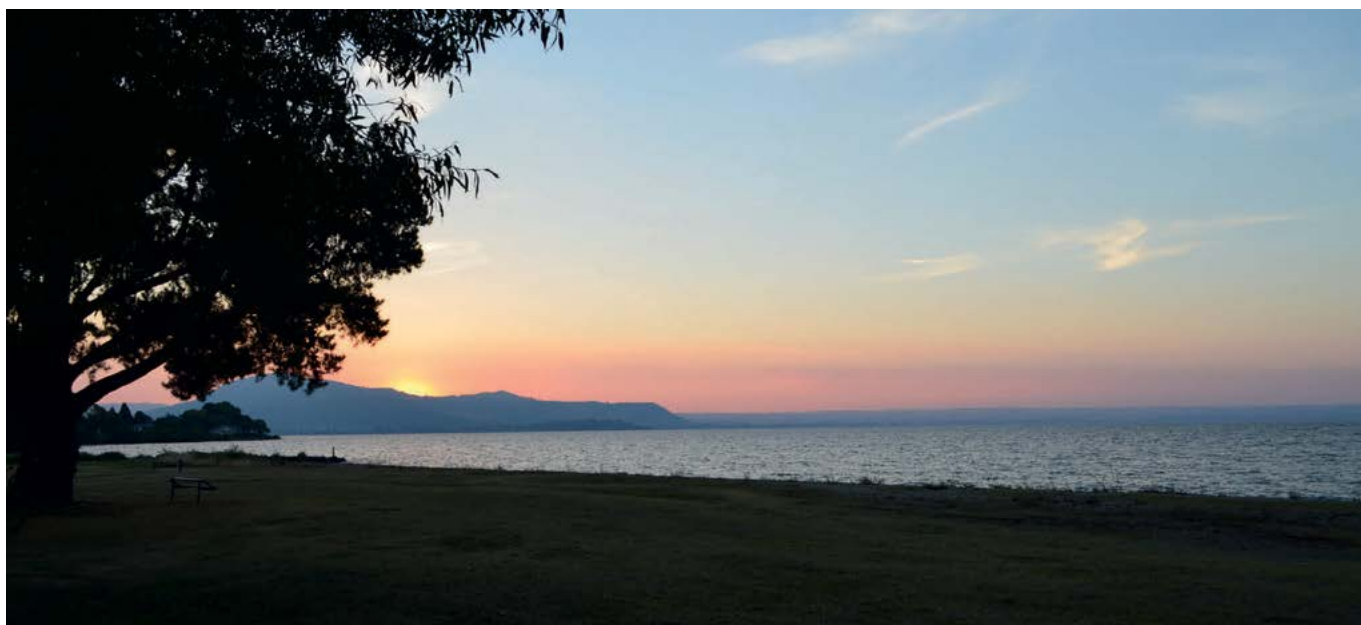
With the magnificent Redwoods Forest also right on the doorstep, you'll have access to the great walking, running and of course the famous mountain bike tracks. These can now be accessed directly from your accommodation – find endless trails for beginners to the experienced mountain biker, linking up with the renowned and purpose-built tracks which have made the forest a 'mecca' for mountain bikes.



📍 723 Tarawera Rd, Blue Lake, Rotorua
☎ 0800 808 292

✉ info@bluelaketop10.co.nz
🌐 bluelaketop10.co.nz





CEDARWOOD LAKESIDE SPRING BREAK IN ROTORUA!

Sit back, relax and watch the world pass you by...

Welcome to Cedarwood Lakeside – Motel & Conference Venue, one of the most relaxing locations in Rotorua. Positioned on 2 acres of park like surroundings, directly on the shores of Lake Rotorua and just a short 8 minute drive from the hustle & bustle of the City.

Our property consists of 16 spacious, comfortable & cosy units ranging from Studios through to our popular Two Bedroom Lakefront Suites with endless views. To make your stay enjoyable, our facilities include a heated in ground swimming pool (seasonally heated), private indoor spa, outdoor hot tub, BBQ & picnic area, children's playground including two trampolines, petanque, secure bike shed & wash down area, coin operated guest laundry, book & DVD library, plenty of off street parking for boats, trailers & jet skis and free unlimited WiFi (**Ultra Fast Fibre internet**) to keep you connected.

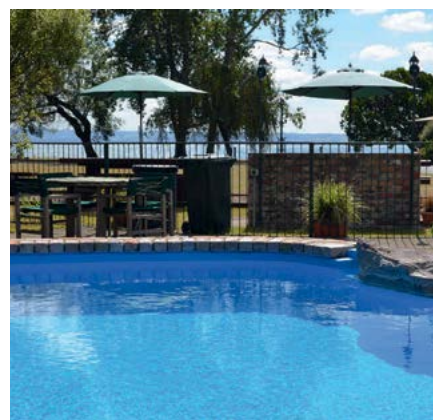
We can even arrange a float plane ride for you with collection direct from our lake front (weather permitting) or a trout fishing charter with pick up from our jetty – what could be easier?!

We have been privileged to be awarded the Trip Advisors Travellers Choice Award in the Family category for the fourth year and have been successful in gaining a further Trip Advisor Certificate of Excellence for the seventh year running. This is all based on our guests feedback, so rather than take our word for it, come & experience what our previous guests have raved about!

Book direct for best options & we look forward to welcoming you soon!

"My wife and I and three grandchildren traveled for a month in Australia and New Zealand and this was the best place we stayed. Everything was in excellent shape, the people there were very friendly and helpful. We really enjoyed our time."

Recent TripAdvisor Review





REGENT OF ROTORUA

Escape ordinary. For that romantic retreat, or an adventure for the family, Regent of Rotorua is an urban oasis, a sanctuary in the city, offering a restorative, rejuvenating experience.

STAY...

The Regent marks the epitome of chic, luxury accommodation in the city. Your boutique suite is perfect for your next romantic getaway, for those families or friends traveling together, your 2-bedroom Executive Suite offers additional space for the family. Our thermally heated swimming pool is a constant 28C for year round enjoyment. Soak away aches & pains in our indoor mineral pool drawn from deep underground.

DINE...

The hip and stylish Regent Room offers you a range of contemporary New Zealand cuisine from our extensive menu including sharing plates & tapas, degustation dinner and tempting desserts. Open 7 days a week from 6.30am till late serving breakfast, lunch, bar snacks and dinner.

LOCATION...

In the heart of the city, a short walk from the lake front, shopping, cafés, spas & easy drive to Rotorua's attractions.



📍 1191 Pukaki St, Rotorua
☎ 0508 734 368 (within NZ)

✉ info@regentrotorua.co.nz
🌐 regentrotorua.co.nz





The
**JOY of
TRAVEL**
starts here

**Stay at the best family-friendly hotel
in Rotorua and enjoy wallet-saving
discounts at 11 local attractions**

Unlock promotional rates from \$170 including breakfast
at holidayinn.nz/familygetaway

Holiday Inn

AN IHG® HOTEL

ROTORUA





JET PARK HOTEL ROTORUA

Experience authentic New Zealand hospitality and four-star hotel accommodation just 5 minutes' walk to Rotorua CBD. Stay connected with complimentary WiFi and fuel your day with a delicious breakfast, before heading out on your adventure.

YOUR HOME AWAY FROM HOME

Jet Park Hotel Rotorua is an ideal 'home away from home' during your visit to Rotorua. We are a 100% New Zealand owned and family operated hotel where you will be greeted with genuine Kiwi hospitality. Being able to provide affordable, quality accommodation is something we pride ourselves on and what enables our guests to get the most out of their Rotorua experience.

FAMILY CARE AT ITS BEST

At Jet Park Hotel we're one big family and we'd love to take care of yours! Your holiday starts as soon as you arrive, and we have created a relaxing atmosphere to return to after an action-packed day! Our dedicated indoor kid's play area, library, outside playground, spa and swimming pool means your kids will be entertained whilst you can relax.

LARGE QUALITY HOTEL FEEL BUT SMALL ENOUGH TO CARE!

Facilities include 63 modern, well-appointed standard or twin rooms, plus family suites, self-contained apartments and suites- some with spa baths; Te Purū Café, swimming pool and outdoor spa, bike wash and storage, kid's indoor and outdoor play areas, outdoor seating and book library.

STAY IN THE HEART OF ALL THE ACTION

With our complimentary on-site car parking, and just a few minutes' walk to Rotorua town, our hotel is also perfectly located close to many superb local attractions. In fact, talk to our friendly reception and they will offer you advice on the best hot-spots, as well as give you discounts to some attractions!

Book direct now for discounted rates, specials and packages!

Creating ease in journeys



📍 237 Fenton St, Rotorua
☎ (09) 275 4100 or 0800 538 466

✉ reservations@jetpark.co.nz
🌐 jetparkrotorua.com



Jet Park
HOTELS
ROTORUA

ROTORUA THERMAL HOLIDAY PARK

With more than 150km of purpose built mountain biking trails just a 5 to 10 minute bike ride from our park, you won't find a better location for your forest adventure.



Enjoy FREE hot mineral pools, on-site bike wash and storage. Stay in our tent, campervan or caravan sites, dorm rooms, studios, authentic log cabins, ensuite log cabins, fully self-contained flats, or luxurious fully equipped and spacious motel units.



Our guests have access to our well maintained communal kitchen facilities, gas BBQs, bathrooms, laundry, TV rooms, swimming pool (seasonal), kids play area and kids mountain bike track. A visit to Rotorua is not complete without soaking in our free hot mineral pools which are accessible to all guests.



All this surrounded by mature trees and gardens. Rotorua has become a mecca for mountain bikers, travelers and visitors from around the world.

📍 463 Old Taupo Rd, Rotorua
☎ (07) 346 3140

✉ info@rotoruathermal.co.nz
🌐 rotoruathermal.co.nz

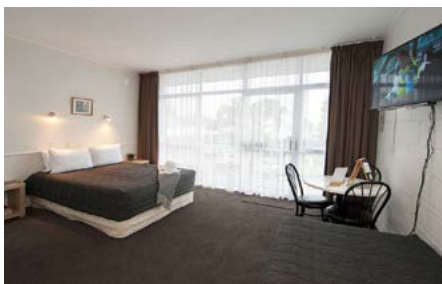


AURA ACCOMMODATION

Centrally located accommodation setting the benchmark in friendly personalised service and sustainable practices.



Located within a block of the lakefront, 'Eat Street' and Government Gardens, Aura has become the hub for those seeking to make the most of their time in Rotorua. Whether that be taking the local team's advice and exploring a wide range of sights or enjoying the extensive facilities at Aura.



The geothermally heated pool, private thermal pools, free bike and scooter use, BBQ and steambox cooking facilities, Sky TV and Netflix give every reason to laze about the property. Come and experience this unique place putting people and the environment at the forefront.



2019 Trip Advisor Awards

- Travellers Choice Award 2019
- 3rd Best Service Hotel in NZ
- 6th Best Service Hotel in the South Pacific

📍 1078 Whakaue St, Rotorua
☎ 0800 333 799

✉ info@aurarotorua.co.nz
🌐 aurarotorua.co.nz



QUEST ROTORUA CENTRAL

Come and experience this award winning Apartment Hotel in the heart of the city, offering the perfect home away from home whilst in Rotorua.



After a day of mountain biking in the Redwoods, zip lining through the Mamakus, or white water rafting the Kaituna River - it's always nice to return to your luxury apartment surrounded by all the creature comforts of home.

Enjoy fully air-conditioned and double-glazed apartments, with sumptuous



king size beds, kitchens and laundry facilities. Soak in a private hot tub in our executive apartments and surf away with FREE unlimited high speed WiFi, or more simply, chill out in your apartment with over 150 FREE movies on demand.

Book direct for the best available rates.



2019 Travellers' Choice Award
Ranked #1 - Top 25 Hotels
- New Zealand

📍 1192 Hinemoa St, Rotorua
☎ (07) 929 9808

✉ host@questrotoruacentral.co.nz
🌐 questrotoruacentral.co.nz



CENTRALLY LOCATED 5 STAR HOLIDAY PARK

Rotorua TOP 10 Holiday Park is Rotorua's multi award winning 5 Star - Premium graded Holiday Park, located just 1km from the city centre.



The Rotorua TOP 10 Holiday is only a short walk to the heart of the city, with a range of affordable accommodation options to suit families, couples, or corporate travellers during their visit to Rotorua.

Offering TOP quality accommodation ranging from our 4 star motels to our



well-equipped cabins- perfect for those looking for accommodation on any budget. We also offer all-weather powered campsites, ideal to experience & re-discover those childhood memories. For extra comfort we have a fireplace & 50 inch TV in the communal lounge, our free spectacular mineral pool complex, free unlimited WiFi for



each guest, free entry to Golds Gym Rotorua, an adventure playground, trampolines & newly added jumping pillow.

Rotorua TOP 10 Holiday Park is a multi award winning park situated in the heart of Rotorua, why stay anywhere else?

📍 1495 Pukuatua St, Rotorua
☎ 0800 223 267

✉ stay@rotoruatop10.co.nz
🌐 rotoruatop10.co.nz



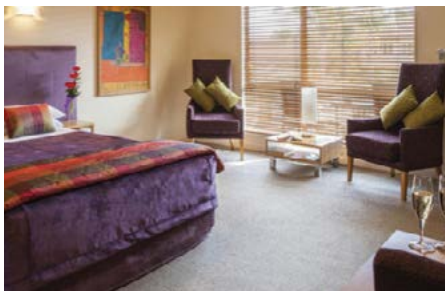
REGAL PALMS RESORT

Luxury accommodation located in the heart of Rotorua, Regal Palms Resort offers exceptional facilities and unsurpassed Kiwi hospitality.

At Regal Palms, we understand that hospitality is an art, embracing service, attitude and respect for the individual needs of every guest. Expect the highest level of customer service every time you stay with us.

Our modern, well-equipped superior suites and apartments are ideal options for couples, families and groups. Every suite and apartment has a great range of features, including a spa pool - perfect to sink into at the end of the day!

You may want to relax with a drink in the cosy guest lounge, enjoy our heated swimming pool, or use our free bicycles exploring the city - there's something for everyone!



Check our website for packages and promotions — make sure you get the best deal when you stay with us!

Regal Palms is the perfect location for your upcoming business meeting or conference.



📍 350 Fenton St, Rotorua
☎ (07) 350 3232 or 0800 743 000

✉ experience@regalpalms.co.nz
🌐 regalpalms.co.nz



LAKE ROTORUA HOTEL

Nestled beside the beautiful, mystic shores of Lake Rotorua, this contemporary hotel is positioned right in the heart of this unique geothermal region.



Just an easy 15-minute stroll or 5 minute drive to Rotorua's CBD, the hotel affords easy access to the astonishing array of cultural, adventure and recreational activities available in this amazing area. The sacred, ancestral home of the Bay of Plenty Maori People, Rotorua is a bustling leisure destination with so much to do and see.

Within easy reach of dining and entertainment options, the Lake Rotorua Hotel offers contemporary, well-appointed guest room accommodation with a swimming pool and a heated spa pool. An ideal base to experience the diversity that Rotorua offers, the hotel features a breakfast room, guest room wheelchair access

and complimentary outdoor, on-site car parking. The Lake Rotorua Hotel was awarded Qualmark's Silver Award for sustainable Tourism in 2019. Qualmark recognises businesses that are delivering holistically sustainable experience for guests and we are proud to have achieved silver status.

📍 131 Lake Rd, Rotorua
☎ (07) 346 2110

✉ reservations@lakerotoruahotel.com



FOUR CANOES HOTEL

Four Canoes Hotel Rotorua offers comfortable accommodation, distinctive, authentic Māori cultural décor, outdoor swimming pools, unlimited WiFi and personalised, friendly hospitality.



Conveniently located in the heart of Rotorua's accommodation district, the Four Canoes Hotel is just a short walk or 5 minute drive to Rotorua's CBD and close to the shores of mystical Lake Rotorua. The sacred, ancestral home of the Bay of Plenty Māori people,



Rotorua is a unique destination with many 'must see' attractions. With easy access to the fantastic array of recreational and cultural activities in this world-renowned geothermal wonderland, the Four Canoes Hotel is the perfect base for exploring this



geothermal wonderland. Offering a range of room types to suit all needs and daily cooked and continental breakfast, the Four Canoes Hotel has everything you need.

📍 273 Fenton St, Glenholme, Rotorua
📞 (07) 349 3370

✉️ reservations@fourcanoesrotorua.co.nz
🌐 cpghotels.com



FOUR CANOES HOTEL
ROTORUA

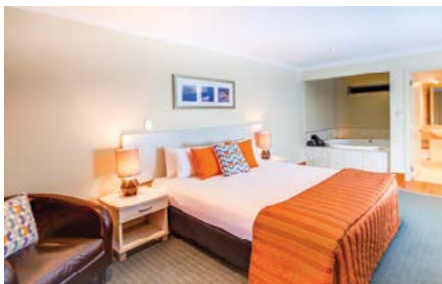
TUSCANY VILLAS & EMERALD SPA MOTOR INN

Relax in our luxury suites, which include Rotorua's largest fresh water spa baths, comfy king size beds, A/C, cooking facilities, free Wifi and parking onsite.



Ideal for families, couples, or executive travellers. Great central location, just a short walk into the CBD and only 5 minutes' walk to the supermarket. SKY TV, unlimited WiFi, a heated outdoor swimming pool and BBQ's are available for guests.

Our conference facilities are perfect for



your business requirements.

Located in NZ's Mountain biking capital and just a few minutes travel to the renowned Redwoods and Skyline.

We offer free secure bike storage and purpose built bike wash down facilities. Rotorua is also home to Skyline which boasts internationally acclaimed biking.



Treat yourselves to our Romance Package and enjoy accommodation in our Honeymoon Suite with a Bottle of Bubbles upon arrival, fine dining dinner for 2 at an award winning restaurant, breakfast and a late checkout.

BOOK DIRECT on 0800 20 40 80 and receive a \$10.00 per night discount.

📍 286 Fenton Street, Rotorua
📞 (07) 348 7788 or 0800 20 40 80

✉️ stay@emeraldspa.co.nz
🌐 emeraldspa.co.nz





VR ROTORUA LAKE RESORT

Set on 6 acres on the shores of the beautiful Lake Rotoiti Park Racecourse.

VR Rotorua Lake Resort is located just 15 minutes drive from central Rotorua. It features a heated outdoor pool, a sauna and tennis courts. Guests enjoy free unlimited WiFi.

All rooms feature a private balcony or patio offering either stunning views over

Okawa Bay or the surrounding gardens. Each includes satellite TV, tea/coffee making facilities and a minibar. The Grill Restaurant is open for breakfast, lunch and dinner and serves modern New Zealand cuisine.

For more information please visit vrrotorua.co.nz

📍 **366 State Highway 33, Mourea, Rotorua**
 ☎️ **(07) 362 4599**
 ✉️ rotorua.gm@vrhotels.co.nz



ROTORUA FAMILY HOLIDAY PARK

Our friendly holiday park is situated in a quiet location with no sulphur odour, a short drive to central Rotorua.

In our park-like grounds we offer various types of accommodation to suit our guest's requirements. Our facilities include children's playground, swimming pool (seasonal), spa pool, BBQ cooking and dining area, 9kg gas bottle exchange, tackle shop, TV room,

dump station & full camping facilities. Only 3 minutes drive to Skyline, Rainbow Springs, OGO, Rotorua Canopy Tours, Agroventures, and Agrodome. A short walk to the Ngongotaha shops, Lake Rotorua and world famous Ngongotaha trout fishing stream.

📍 **22 Beaumont Rd, Rotorua**
 ☎️ **(07) 357 4289 or 0800 574 289**
 ✉️ stay@rotoruafamilypark.co.nz
 🌐 rotoruafamilypark.co.nz



ROTORUA NIGHT MARKET



HEAVENLY DINING AND ADRENALINE-FILLED ADVENTURE AT SKYLINE

Award-winning dining meets adrenaline at Skyline Rotorua. Build up your appetite mountain biking, lugging or ziplining before settling in for an incredible dining experience at Stratosfare Restaurant and Bar.

GOURMET CUISINE

Famous throughout the Bay of Plenty and beyond, a night (or day) to remember is ahead of you at Stratosfare beginning from the moment you step into the Gondola and ascend Mount Ngongotaha.

Let the stunning views of Rotorua set the scene before beginning your evening with a signature cocktail before admiring the lavish sight of Stratosfare's magnificent buffet stretching the length of the restaurant.

Inspired by iconic kiwi cuisine infused with international influences, Stratosfare's head chef prides himself on delivering an unforgettable menu featuring locally sourced fresh seafood, meat and produce.

The new autumn menu includes a rich and creamy butter chicken, a mouth-watering coconut curry laksa soup and a host of favourites. Room for dessert? Check out the waffles with a selection of sweet toppings, preserves and assorted New Zealand ice cream.

Open every day for lunch from 11.30am and dinner from 5.30pm.

ADVENTURE AWAITS

If you prefer to build up an appetite, then look no further! With their own Mountain Bike Park, Luge track, Skyswing and zipline there's something for every level of adrenaline junky.

Home to New Zealand's first year-round Gondola-assisted bike lift, Skyline Rotorua MTB Park is your gateway to world-class downhill mountain biking on your back doorstep with a trail for every level of expertise.

The Luge is a firm favourite for the whole family with scenic, intermediate and advanced tracks. Young children can ride with parents – and our oldest rider is 101!

Dare to face your fears at New Zealand's only Skyswing – the three-seated Skyswing hoists you 50m into the air reaches speeds of up to 150kph!

Feel the thrill of flying with Zoom Ziplines – the 400m dual ziplines allow you to race family and friends at speeds of up to 80km/h; it's the closest you can get to flying without wings!

Make your next family day out or fine dining experience one to remember at Skyline Rotorua.



GOOD EASTERN TAPHOUSE

Good Eastern Taphouse is the place to be – Good Beer, Good Friends, Good Cheer. We're here to help create better beer moments with Good George Ciders and Beers.



With biking in their blood and a love for Rotorua, Andy and Prue Allan founded the Good Eastern – a Taphouse on the front door step of the iconic Redwoods Forest.

The couple also believed that beer should always be a satisfying experience, so having the 'right beer' is at the core of everything on offer at the Good Eastern.

Enter Good George, the craft beer exclusively on tap.

Brewed in Hamilton by Darrell Hadley and Jason Macklow, Good George is about providing patrons with an alternative to mass produced beer that is often full of chemicals and ultimately, lacking in flavour. Andy and Prue are proud that the taphouse is

able to offer a less pretentious and intimidating exploration of beer, while in good company and of course enjoying delicious food.

Within walking distance of some of the best mountain biking trails in Australasia, the Good Eastern is the perfect place for good eating and of course, very good beer.

📍 279 Te Ngae Rd, Rotorua
☎ 07 345 4476

✉ admin@goodeastern.nz
🌐 goodeastern.nz

GOOD EASTERN
TAPHOUSE

urbano bistro



BREAKFAST & LUNCH
Mon to Sun, 9am – 3pm



BAR SNACKS Mon to Sun, all day



DINNER Mon to Sat, 5.30 – 9pm

SMART CASUAL CAFE BY DAY

- ✓ Serving breakfast, lunch and bar snacks
- ✓ Fresh baked muffins, slices, cakes and biscuits
- ✓ Ozone Coffee – dine in or takeaway

BISTRO DINING BY NIGHT

- ✓ Serving modern, innovative contemporary cuisine

- ✓ Free Motel Delivery
- ✓ Menus available online
- ✓ Reservations recommended

**VOTED ROTORUA'S MOST OUTSTANDING
RESTAURANT FOR 2013 AND 2016
FINALISTS IN 2014, 2015, 2017 & 2018**

Cnr Fenton & Grey Streets • www.urbanobistro.co.nz • Phone 07 349 3770 • UrbanoBistro



SOBAR

#SOHOWINE.#CRAFTBEER.FB/SOBAR ROTORUA

Rotorua's newest, exciting addition to the vibrant EATSTREET restaurant & bar precinct



1145 TUTANEKAI STREET
ROTORUA
07 343 7645





A bright and lively cafe with **cabinet food**, **specials board**, and a **breakfast** and **lunch** menu that includes delicious temptations full of fresh flavours like Peach Melba Waffles, Spicy Boston Beans, and Thai Risotto.

With **communal tables**, **extensive outdoor seating** bathed in the summer sun and also taking out the **'2016 Outstanding Cafe'** award, Lime provides a **friendly atmosphere** with good old fashioned table service!



LIME CAFFETERIA

Cnr Fenton & Whakaue Sts, Rotorua | P 07 350 2033

Open 7.30am to 4.30pm | 7 days a week

Third Place Café



**2017, 2018 & 2019 Winner
Rotorua Hospitality Awards**

*All day menu
Free parking
Outdoor dining
Award winning coffee
Group bookings
Kids play area
Breakfast
Lunch*



THE COFFEE CLUB REDWOOD CENTRE

A wide range of breakfast & lunch meals, snacks, kids' meals, irresistible desserts & of course excellent coffee right by the famous natural treasure The Redwoods - Whakarewarewa Forest, which also makes an appearance in store!

Cnr Te Ngae & Tarawera Roads
Lynmore, Rotorua
(Beside Te Ngae Medical Centre)
Ph: 07 562 4846

THE
COFFEE
CLUB

35 Lake Rd, Ohinemutu, Rotorua
Phone 07 349 4852
thirdplacecafe.co.nz

OPEN 7 DAYS
Mon - Fri 7:30am - 4:00pm
Sat & Sun 7:30am - 3:30pm

PHONE REPAIRS

PHONE LIFE

REPAIRS+ACCESSORIES



**MOST CRACKED PHONE
SCREENS REPAIRED
WITHIN 30 MINUTES!**

For all **mobile phone/tablet repairs, batteries, cases** or **advice**, come in and see us!

📍 ROTORUA CENTRAL MALL
Kiosk 1, 1170 Amohau St, Rotorua

☎ +64 7 346 0111

✉ info@phonelife.co.nz

🌐 www.phonelife.co.nz



Lakes Care
**DayNight
pharmacy**

Your after hours
ONE STOP SHOP



**OPEN EVERY DAY
OF THE YEAR
8.30AM TILL
9.30PM**



**PRESCRIPTIONS,
FIRST AID
AND ALL YOUR
MEDICAL NEEDS**



**ROTORUA MUD
AND NZ MADE
SKINCARE
PRODUCTS**



1155 Tutanekai St · Rotorua · www.lakescarepharmacy.com · Ph 07 348 4385



**on holiday...
feeling unwell?
injured yourself?**



Lakes PrimeCare is here to help.

We are a walk-in clinic, no appointment necessary.

OPEN EVERY DAY – 8am to 9:30pm

Ph. (07) 348 1000

1165 Tutanekai Street, Rotorua



i-SITE is Rotorua's official information and booking centre, and we are open 7 days

A large, ornate, light-colored building with a prominent clock tower, identified as the Rotorua Town Hall. The building has multiple stories with many windows and a decorative facade. In the foreground, there are vibrant pink and yellow flowers. The sky is a mix of blue and orange, suggesting dusk or dawn.

Talk to us first

The best sights and things to do

The best places to stay

The best walks

The best rides

The best food

We'll book you in

RotoruaNZ.com

A Corner Fenton & Arawa
Streets, Rotorua

T 07 348 5179

E info@rotoruaNZ.com

Where water 
and air  recharge
your spirit



RotoruaNZ.com

ROTORUA
Find your element
   