

SPRING/SUMMER 20

ROTORUA

**YOUR
GUIDE TO
ROTORUA**

**3 DAYS IN
ROTORUA**

**FIND YOUR
ELEMENT**

WHAT'S ON



GLO FESTIVAL

31st December 2019

GLO Festival is a fun and family-friendly New Year's celebration including movies, food stalls, musical performances and fireworks. A night for families to enjoy, so bring a picnic blanket and settle in to celebrate the year that was and welcome in the beginning of another.

facebook.com/rotoruaglofestival

TARAWERA ULTRAMARATHON

8th February 2020

The Tarawera Ultra Marathon is New Zealand's most prestigious trail ultra. Runners can complete the 21km, 50km, 102km distances or the ultimate 100 mile endurance run. The course takes in seven lakes, forests, waterfalls and the most stunning scenery imaginable. Head to Rotorua for the 12th edition of this exciting event showcasing the best of Rotorua.

taraweraultra.co.nz



CRANKWORX

2nd-8th March 2020

Crankworx Rotorua mountain bike festival brings together the best mountain biking pro-athletes across a range of disciplines, pitting them against one another in an exciting festival atmosphere. The festival is in its sixth year and continues to get better and better!

crankworx.com/festival/rotorua



KIA ORA & WELCOME

to the latest edition of the Rotorua Visitor Magazine.

Rotorua is the perfect place for a getaway. You'll find fascinating culture, pristine lakes, fertile forests, geothermal wonders and an abundance of attractions and activities - so there's something here for everyone.

In this issue of the Rotorua Visitor Magazine, we'll share a few ideas on how to make the most of your time here. Rotorua's eighteen beautiful lakes and stunning forests mean you are never far

away from a picture postcard moment, while accessible trails make it easy to explore all that this magical place has to offer.

Whether you're a first time mountain biker looking to enjoy an idyllic, peaceful ride, or an extreme biking enthusiast wanting to test your skills and have some fun, we've got the perfect trail. Be sure to visit again in March when we play host to Crankworx, the world's largest mountain bike festival.

On page 12, you'll find our Instagram Trail to guide you to some breath-taking spots that are off the beaten track. We've also shared some suggestions on how to make the most of being in, on or beside the lakes, along with some fun ways to enjoy our forests.

So, whether you're here for an event, visiting friends and family, or on a weekend getaway, we know you'll love your time in Rotorua!

2 FEATURED EVENTS

4 WHAT'S ON - EVENTS CALENDAR

6 HOLIDAY IDEAS

8 FIND YOUR ELEMENT

10 3 DAYS IN ROTORUA

12 INSTA TRAIL

14 FOREST AND LAKES

16 ON HOLIDAY WITH ZAC & ERIN



RotoruaNZ



DestinationRotorua



+64 (07) 348 5179



RotoruaNZ.com





To keep up to date with everything that's on in Rotorua check out RotoruaNZ.com/whats-on

WHAT'S ON

Aronui Arts Festival

1-30 SEPTEMBER 2019



The Aronui Indigenous Arts Festival descends on Rotorua this September! The month-long festival celebrates indigenous art and highlights the world-class artists we have in our community.

facebook.com/aronuiartsfestival

Lendlenser Run Beneath the Stars

14 SEPTEMBER 2019



Get your headlamps ready & enjoy an evening under the stars in the famous Whakarewarewa Forest. Run or walk your way around a 5km, 10km or 21km course on a mixture of single track & forestry roads.

eventpromotions.co.nz

Okere Falls Beer Fest

23-26 OCTOBER 2019



With great beer, traditional German food & music, this weekend festival is a local favourite and a great reason to head to Okere Falls for the weekend.

okerefallsstore.co.nz

Grease - The Musical

1-9 NOVEMBER 2019

The world's best loved musical is coming to Rotorua! With it's phenomenal score bursting with hits, this musical classic is brought to life by the Rotorua Musical theatre!

ticketmaster.co.nz

Emerson's Whaka 100

26-27 OCTOBER 2019



The Whaka 100 holds the reputation of being one of the toughest mountain bike marathons in the Southern Hemisphere. With races ranging from a 5.5km kids race, through to 100km solo, pairs and teams there's an option for all.

whaka100.co.nz

Rotorua Bike Festival

25 OCT - 3 NOV 2019



Now in its 7th year, the Rotorua Bike Festival delights both bikers and non-bikers alike. Enjoy this ten day festival celebrating all things with two wheels.

rotoruabikefestival.co.nz

Giant Gravity Enduro

2 NOV, 7 DEC 2019, 22 FEB 2020



Cruise up, race down! This is the country's biggest gravity Enduro series with three races over summer.

enduronz.com


WEEKLY

Rotorua Night Market – Thursdays 5-9pm, Tutanekai St. Food & boutique shopping
Rotorua Farmers Market – Sundays 9-1pm, Te Manawa. Fresh produce & crafts

Rotorua Half Ironman

14 DECEMBER 2019



This classic half ironman - otherwise known as the 'suffer' - is a must do! Swim, run & ride in this event which will push you to your limits whilst offering unforgettable sights.

half.co.nz

Children's Weekend

29 FEB - 1 MAR 2020



A wide range of free family activities hosted in various venues around Rotorua over two fun filled days celebrating children around the world.

rotorualakescouncil.nz

Rotorua Lakeside

29 FEBRUARY 2020



Gather the family, blankets & picnics & head to the Village Green where you can join in an evening of entertainment, culture & celebrations on the 24th year of Lakeside Rotorua. An event for locals & visitors alike this is an evening not to be missed.

rotorualakesconcert.co.nz

Rotorua Off Road Half Marathon

1 MARCH 2020



Join us in the Whakarewarewa Forest for this fantastic off road running/walking event! With distances ranging from a half marathon, quarter marathon, 5km and the little devil's race there is something for all.

eventpromotions.co.nz

Rotorua Walking Festival

14-15 MARCH 2020



The ultimate walking festival to suit everybody. From old to young, experienced to newbies - this festival is sure to please & showcase Rotorua's stunning surroundings.

rotorualwalkingfestival.org.nz

Generation Home Legends of the Lake

21-22 MARCH 2020

Looking for a lake swim for the entire family? Well this is the one! With distances ranging from 5km ultra, through to a 100m race for the kids, there is a distance to suit all!

oceanswim.co.nz

Radix Nutrition XTERRA Rotorua Festival

4 APRIL 2020



The Radix Xterra festival is the biggest multisport event in New Zealand. Enjoy the eight events set in and around Rotorua's beautiful Lake Tikitapu (Blue Lake) and the Whakarewarewa Forest.

xterra.co.nz



ROTORUA VISITOR CENTRE & i-SITE

A visit to the i-SITE on arrival to Rotorua will help you uncover the hidden gems that will make your visit truly memorable.

The friendly team of Rotorua experts are more than happy to help you with any questions, recommendations, and bookings – so pop in and find the perfect activity for you!

OPEN 7 DAYS

1167 Fenton St, Rotorua

07 348 5179

For more information visit
RotoruaNZ.com/visit



Jet Park Hotel

Experience authentic New Zealand hospitality and four-star hotel accommodation, close to Rotorua CBD. Stay connected with free WiFi and fuel your adventure with a hearty continental or cooked breakfast every day.



Sport of Kings Motel

Has two public spa pools and a heated outdoor swimming pool for use during your stay all year round, along with a BBQ and BBQ table poolside. We have a playground to keep children entertained for hours. There are also purpose-built bike wash down facilities and electric vehicle charging stations.



Solitaire Lodge

Solitaire Lodge Rotorua, one of the first New Zealand luxury lodges, offers secluded luxury accommodation and attentive hosting from a spectacular lakeside location. Minutes from your doorstep you will discover secluded private bays, hot water beaches and natural thermal hot springs beckoning you to soak in.



Waiteti Trout Stream Holiday Park

Waiteti Trout Stream Holiday Park is nestled on the banks of the Waiteti Stream amidst two acres of mature trees and gardens. You can fish from the banks or stroll 200 metres along a pathway to Lake Rotorua.



Blue Baths

Swimming was what drew people to The Blue Baths back in 1933 when daring mixed bathing (a New Zealand first) adding to the excitement of socialising with family and friends at "The Blueys". The warm waters of The Blue Baths pools are geothermally heated fresh (not mineral) water. Pools range from 30 to 42 degrees.



Lakeview Golf Club

Lakeview Golf and Country Club is a unique 18 hole, par 72 course with undulating fairways and challenging greens. Enjoy stunning views of Lake Rotorua, Mokoia Island and the surrounding countryside.



Off Road NZ

Off Road NZ is located on a beautiful NZ native bush-clad property on the Mamaku Plateau, just 20 minutes north of Rotorua City. Off Road NZ offers 4WD Bush Safaris, Monster 4X4 Thrill Rides, Raceline Karting and Claybird Shooting.



Waikite Valley Thermal Pools

Waikite Valley Thermal Pools is a unique place to go to experience the 'Living Waters' of Te Manaroa Spring, New Zealand's largest single source of pure boiling water. This water is used in the main splash pool, toddlers' beach area, sit and soak pool and the luxurious garden pool.



NZ RiverJet

The Squeeze is a unique adventure beginning with a scenic jet boat trip through the Tutukau Gorge on the Waikato River. Wade through knee-deep warm water towards a narrow gap in the cliff face and manoeuvre through narrow crevasses, emerging in stunning native NZ bush to soak in the thermal waters of a naturally heated bathing pool.



Paradise Valley Springs

Paradise Valley Springs is a beautiful trout, bird and wildlife park 15 minutes' drive from the Rotorua city centre. A pride of African lions is the main attraction so don't miss the daily feeding at 2.30pm and lion cubs can be patted when in residence.



River Rats

The Kaituna River is home to the largest commercially rafted waterfall in the world - 7m Tutea Falls. Let River Rats show you their backyard, where New Zealand native trees line the gorge of the beautiful Kaituna River. There are also lower grade rafting and lake kayaking options.



SITE



FIND YOUR ELEMENT IN ROTORUA

To feel the earth beneath our feet, the wind on our face, fire's warmth on our skin and water's calming nourishment... nature is where we go to feel refreshed, awaken our senses or simply relax.

As the hectic school holiday, Christmas and New Year festivities loom, it's important to take time out and reconnect with people. The elements offer this - all four can be combined to create a sense of calm in our non-stop lives.

Water/Wai

Summer is the perfect time to be bold and run into the beckoning lake waters (wai) to take the first dip of the season. There's nothing like immersing yourself in the fresh coolness of our lakes to revitalise the mind and soul, while surrounded by stunning bush and mountain landscapes.

Air/Hau

In Maori culture, the four winds represent bringing people together, and the sharing of kai (food) is an authentic way to do this. In Rotorua, you can take a stroll down Eat Street to experience locally sourced cuisine, or you can check out our innovative local artisans at either the Night Market on a Thursday or Farmers Market on a Sunday.

Fire/Ahi

Geysers erupt into the air, mud pools bubble and natural spas emerge from underground, reminding us of nature's incredible forces at play. With many geothermal attractions to discover, you'll be in awe of how these landscapes evolve.

Earth/Whenua

Walking through the depths of the forest with trees towering above, native ferns within arms' reach and the sun peeking through the canopy, is an invigorating feeling. With hundreds of kilometres of walking and mountain biking trails - it's easy to explore Whakarewarewa Forest.

Find your element... in Rotorua

There's nowhere else in the world where earth, wind, fire and water exist in such a potent way. Rotorua is the place to combine all the elements, bringing people and place together to create the ultimate experience.



Earth/Whenua

Inspired by niho taniwha (teeth of the taniwha), this pattern represents the myths and legends of the Māori people. The tapatoru (triangles) symbolise strength and resilience, and mirror the shape of our mountains and forests.



Air/Hau

Four koru designs represent nga hau e wha (the four winds), which were thought to be controlled by tohunga (priests) to help their tribe. This symbol is representative of bringing people together.



Fire/Ahi

The kaokao pattern reflects the burning passion of Māori warriors – arms strong, standing united – as they perform the haka, a fierce display of pride and strength.



Water/Wai

Called the 'life giver of all things', this symbol represents wai giving energy to the koru as it unfurls. The three ripples relate to the lakes, rivers and geothermal waters, which each have their own mauri (life force).



3 DAYS IN ROTORUA

We all love an extra day added onto the usual 'weekend' getaway to really unwind and explore. Luckily with Labour weekend and holidays coming up, there are many opportunities to plan a fun getaway.

DAY 1



MORNING

Start your getaway with a white water rafting adventure – float down the river between native bush clad canyons and paddle over 14 rapids and three waterfalls on the Kaituna River. The biggest thrill is rafting the world-renowned seven metre Tutea Falls - the highest commercially rafted waterfall in the world! Choose from River Rats, Kaitiaki Adventures or Rotorua Rafting.



AFTERNOON

After a physical morning on the river, it's time to relax and enjoy the entertainment on Rotorua Duck Tours. Hop aboard the amphibious WWII vehicle and learn about Rotorua's rich history while exploring the spectacular lakes and countryside.



EVENING

Wander along Eat Street to choose from a myriad of restaurants for dinner and then head to the Redwoods Nightlights Treewalk. The half-kilometre walkway of bridges suspended in the forest canopy features 30 David Trubridge designed lanterns and 40 colour spots illuminating the trees for a totally different nocturnal experience.



DAY 2



MORNING

The forest is good for your soul in the morning with the sun peeking through the trees. Explore some of the best trails in the 150km network. Either hire bikes and explore with a map (or the Trailforks app) or go with a guide who will also let you know all about the history of the forest.



AFTERNOON

Get up close with the wonderful birds, bugs and beasts that call New Zealand home at Rainbow Springs - this is always a favourite for the family. Meet Kiwi, kaka, kea, tuatara, trout and more. The kids can also release some energy in the playground and on the Big Splash water ride.



EVENING

Learn more about Māori culture - see Mitai Māori Village warriors paddle a waka down Wai-o-whiro stream and check out glow worms, eels and trout in their natural habitat. Be captivated by songs, haka, dances and games in a powerful concert and then enjoy an authentic hangi dinner.

DAY 3



MORNING

Book an early morning Rotorua Canopy Tour to hear the bird chorus at its best on New Zealand's only native forest zipline tour. Deep in virgin native forest, this three-hour wilderness adventure mixes fun, education and conservation in a once in a lifetime experience.



AFTERNOON

After a big few days, there's nothing like winding down at Polynesian Spa - a world-leading, natural mineral bathing retreat. Channelling geothermal marvels in its backyard, the 28 mineral pools are fed from two natural springs with the family pool also featuring a slide for the kids.



1 Kuirau Park, @hodgeman

#whakarewarewa



The Landing Jetty, Lake Tarawera @meghanmaloneyphotography



2 Lake Front Jetty, @marksmithphotography.nz

#RotoruaNZ



3 Sulphur Point, @markcoker

#sulphurpoint



4 Rotorua Museum, @marksmithphotography.nz

#rotoruaumuseum



5 Rachel Spring, @dominicchookphotovideo

#rachelsspring



6 Whakarewarewa Forest, @meghanmaloneyphotography

#whakarewarewa



SPOTS

Check out these incredible scenic photo spots in the Rotorua area... Don't forget to tag @Rotoruanz and hashtag #RotoruaNZ with your images.

INNER CITY LOOP

- 1 Kuirau Park #kuiraupark
- 2 Lake Front Jetty #RotoruaNZ
- 3 Sulphur Point #sulphurpoint
- 4 Rotorua Museum #rotoruaumuseum
- 5 Rachel Spring #rachelsspring
- 6 Whakarewarewa Forest #whakarewarewa
- 7 Lake Tikitapu (Blue Lake) #laketikitapu
- 8 The Landing Jetty, Lake Tarawera #thelanding
- 9 Tarawera Lookout #laketarawera
- 10 Lake Okareka Boardwalk #lakeokareka
- 11 Okere Falls Track #okerefalls
- 12 Pohaturoa Track #pohaturoatrack (begins at Redwoods iSite)
- 13 Lake Rotokakahi (Green Lake) #lakerotokakahi (NO SWIMMING IN LAKE ROTOKAKAHI)
- 14 Rainbow Mountain #rainbowmountainrotorua

Instagram Trail

@Rotoruanz

Kia Ora

Welcome to Rotorua. Our region is surrounded by stunning natural and unique environments and we would love to share them with you.

Use our Instagram Map as a guide to discover Rotorua in its outstanding natural state. Explore our region finding hidden gems and surreal scenery.

Don't forget to tag @Rotoruanz and hashtag #RotoruaNZ with your images.

Rotorua's official information and booking centre:

Rotorua i-SITE Visitor Centre
A: 1167 Fenton Street, Rotorua
P: +6473485179
E: info@rotoruanz.com



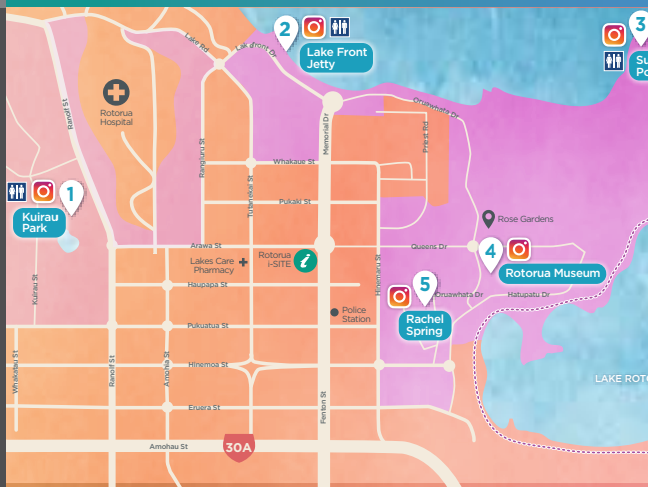
RotoruaNZ.com



5 great Rotorua walks

- 1 **Blue Lake Track** 1 hour 30 minutes, 5.5km loop.
Park at the Lake Tikitapu Scenic Reserve and walk roadside until you reach the track entrance on the right.
- 2 **The Whakarewarewa Circuit (The Black Track)** 8 hours, 34km loop.
A full day's walk on forestry roads and tracks, the Whakarewarewa circuit gives you the opportunity to discover all the beauty and wonders of the Whakarewarewa Forest. See spectacular panoramic views of Rotorua and walk the shores of the beautiful lakes Tikitapu and Rotokakahi. Take time to check in at the Redwoods i-Site for latest information on the track as this is a full day walk. NO SWIMMING in Lake Rotokakahi.
- 3 **Lake Okareka Walkway** 1 hour 30 minutes, 5km return.
A family-friendly lakeside walk. The wetland at the start of the boardwalk is home to many waterbirds.
- 4 **Okere Falls Track** 1 hour, 5km return.
See beautiful waterfalls popular with white water rafters. The site was formerly one of New Zealand's oldest hydroelectric power stations.
- 5 **Rainbow Mountain (Summit Track)** 3 hours, 5km return.
Take in the sights of the two craters, then continue past the bare, coloured and steaming ridges to the summit. From here you can see Mt Tarawera; Lakes Okaro, Rotomahana and Rerewhakaaitu; the Paeroia Range; the Urewera Ranges and Kaingaroa Forest, Mount Tauhara, and the volcanic peaks of Tongariro National Park.

INNER CITY LOOP



7 Lake Tikitapu (Blue Lake), @samuelsam9

#laketikitapu



8 The Landing Jetty, Lake Tarawera @meghanmaloneyphotography

#laketikitapu



ROTORUA

Find your element



14 Rainbow Mountain, @marksmithphotography.nz #rainbowmountainrotorua



13 Lake Rotokakahi (Green Lake), @croguennecharlaine #lakerotokakahi



12 Pohaturoa Track, @newzealandmountainbiking #pohaturoatrack



#thelanding



9 Tarawera Lookout, @michaeltthompson

#laketarawera



10 Lake Okareka Boardwalk, @natcortazar

#lakeokareka



11 Okere Falls Track, @sarahcrawfordphotography

#okerefalls

EXPLORING LAKES &



LAKE TARAWERA



LAKE OKAREKA

This lake is popular for boaties as it's close to the city and often has glassy water for skiing and wakeboarding. A fun spot for families, there's a playground right by the water and picnic spots with a boardwalk to jumping rocks nearby. The DOC Lake Okareka Campsite is right on the water's edge and has a beautiful view to unzip your tent to. If horse trekking's more your thing, you can ride through dense native bush to a viewpoint overlooking Lake Okareka, Lake Rotorua and Lake Tarawera.

LAKE ROTOITI

You'll see some of Rotorua's most spectacular sunsets from the waters of Lake Rotoiti. Known for the lakeside Manupirua Hot Pools only accessible by boat, the family will love the BBQs, water slide and pontoon at this spot. A popular fishing and boating lake, it has an annual classic wooden boat parade which is impressive to see. If you feel like a walk, the Hinehopu 2.2km walking track, from Lake Rotoiti to Lake Rotoehu winds through a breathtaking forest of rimu, tawa, pukatea and rewarewa.



LAKE TIKITAPU (BLUE LAKE)

Lake Tikitapu is popular with runners and walkers as it has a stunning 5.5km track around it – the ideal distance for diving into the lake to feel refreshed afterwards! There's also a mountain bike trail along the side of the lake called Tangaroamihi which links up to a Green Lake trail Rotokakahi for a fun and flowy beginner ride. With BBQs, a playground and pontoons at this lake, as well as a swimming lane, you're bound to have a good time. For boaties there's a skiing slalom course to race along as well.



LAKE TARAWERA

Majestic views greet you at Lake Tarawera (meaning burnt spear). Summer is endless here with options including swimming, boating, bathing in natural lakeside hot pools, catching rainbow trout, camping at Hot Water Beach or Humphries Bay, hiking the Tarawera Trail or walking to Tarawera Falls. You'll love this spot, which has a lot of history linked to the 1886 Mt Tarawera eruption.

ROTORUA'S FOREST



WHAKAREWAREWA FOREST



LAKE OKAREKA WALKWAY

FAMILY WALK

Try the Mokopuna Trail in the Redwoods – front pack – tick, snacks... tick. Yep, you're ready. With kids of varying ages strapped to you or sprinting ahead, you need the right trail for the mammoth effort to even get to the entrance. This easy gravel track is designed specifically for families and at 3.6km is a decent walk (there are many exit points to shorten it if required).

With #Rotorocks hidden throughout, you can keep the little ones entertained as they search for painted rocks and then re-hide them for other kids to find. Passing through mature Douglas Fir, Larch and Redwood forest with punga tree ferns throughout, this is a magical place for the kids to explore.

At the centre of the Redwoods there are toilets, water fountains and picnic tables, as well as a café for a fluffy, coffee and delicious treats.



THE HIKER

Channel your inner explorer and follow the shores of Lake Tarawera on this advanced tramping track. It has everything from water springs and bridges, to native bush and views of Lake Tarawera and Lake Rotomahana. Spanning 15km, the finish is a relief with natural hot water pools to bathe in. Either camp the night at Hot Water Beach and tramp back out, or pre-book a water taxi back to the start.



MOUNTAIN BIKER - BEGINNER

It's your moment – potentially a bit terrified, you're ready to give this mountain biking thing a whirl. You're keen on some low key trails where you definitely won't fall off. Make your way to the Waipa Forest entrance and start with Tahī, then Creek Track, Dipper trail and then back on to the end of the Tahī trail back to the carpark. This loop consists of Grade 1-2 trails, and is sure to have you grinning like crazy when you return, hungry for more.

MOUNTAIN BIKER - ADVANCED

If you're a shredder who wants to head straight to the hardest and most technical trails Whaka Forest has to offer, then make your way to 8 Mile Gate to nab a seat on the Southstar Shuttles bus. Once at the top, head for Tuhoto Ariki, then on to Hatupatu, followed by a climb up to Kang Fu Walrus which drops you out next to the stunning Green Lake. Get your pedal on to make it back to the bus and do it all again! Trails range from Grade 4-5.



ON HOLIDAY - ZAC & ERIN

TV Presenter Erin Simpson and fiancé Zac Franich from The Bachelor recently spent some time in Rotorua and we asked them to recommend their favourite things to do here.



What activity would you say is a must do for people visiting Rotorua this winter and why?

We really loved the Hell's Gate Geothermal Park and Mud Spa!!! They weren't wrong when they said it is raw, angry and a little ugly. We had an amazing guided tour around all the different types of geothermal areas and then we jumped into their unique mud baths, sulphur pools and "health giving" waters to warm up! Heaven!

Are there any hidden gems that you have discovered whilst visiting Rotorua?

The Redwood Treewalk!!! It's the world's longest suspended walkway consisting of 28 elevated swing-bridges and viewing platforms up to 20m in the air! We went at night time and it was truly like being in a magical forest high up in the trees!

Do you have any childhood memories visiting Rotorua? If so, what are they and why did they leave a lasting impression?

I have done a lot of rowing on the Blue Lake and we used to stay in close by hotels or camp grounds. The cafe and restaurant scene then was nothing like it is today. I was blown away coming back!

What is your favourite café, restaurant or eatery in Rotorua? What did you get there and why would you recommend this establishment?

(CBK) Craft Bar & Kitchen!! It's a modern eatery mixed with a stonegrill and a slow cooked selection, and they match a classic craft beer with your meal! I had the sea food chowder and Zac had all the meat haha.

What would you recommend people do to relax when visiting Rotorua?

You couldn't get any more relaxing than being in a hot mud bath at Hell's Gate. We sat in there for 20mins whilst covered in mud, washed it off and then sat in a sulphur pool for a further 10 - I nearly fell asleep I was so relaxed.

Would you recommend that other couples visit Rotorua? If so why?

A mini staycation can do a world of good for a busy couple. Zac and I were just talking about our trip the other day comparing it to a holiday rather than a weekend away! It's the only one we have had all year and it was so nice to just be together, reconnect and relax that we must schedule in another one ASAP.

What are you busy with at the moment?

Next week we start filming for a new show on TVNZ that I'm hosting called 'Adventure All Stars'. The series will commence filming across the country next month. The inaugural New Zealand series will consist of 6 x one-hour episodes, featuring top-secret adventurous and fun activities across locations on both the North and South Islands. That and planning a Wedding haha.

When you aren't busy with work what gets you up in the mornings?

The amazing Monty Betham has signed me up to one of his 12 week training programmes in order to get fit for the wedding but also life in general. I hate it I really do, I have to wake up and leave Zac and the house by 6.15am three mornings a week, get out in the cold and rain and get all hot and sweaty before work! The worst thing is; it's actually working!! Why does exercise have to be the reason we see results?? So now since it's working I have kept going and I'm up to my third 12 week session!





visit: www.rotoruangardens.org.nz for tickets and further information

A photograph of two runners on a dirt path, kicking up dust. The background shows a landscape with trees and a body of water under a blue sky with clouds. The text 'TARAWERA ULTRA MARATHON' is prominently displayed, along with the date '8 FEB 2020' and the phrase 'ENTRIES OPEN NOW'. At the bottom, there is a black bar with logos and event details.

TARAWERA
ULTRA MARATHON
8 FEB 2020
ENTRIES OPEN NOW

ULTRA-TRAIL®
WORLD TOUR

Rotorua NZ

21 - 50 - 100 - 160 km

www.taraweraultra.co.nz



ROTORUA CANOPY TOURS

Soar through the trees and experience New Zealand's ancient forest like never before – in two unforgettable zipline adventures. Immerse yourself in this intact native eco-system filled with towering trees, native flora and beautiful birdsong.

Rotorua Canopy Tours is Rotorua's number one ranked outdoor experience on Trip Advisor. There are two unique eco-tour experiences to choose from, featuring a network of ziplines, suspended swing bridges, treetop platforms and forest trails, as you journey deep into 500 hectares of ancient forest. Get below the surface, above the trees, learn about the past and become part of the future in an adventure like nothing else.

Each tour has a limit of 10 people and your authentic Kiwi guide brings knowledge, fun and creativity to a story that goes back 1000 years. It's an adventure that puts you at the heart of the forest restoration story, with every ticket purchased contributing to conservation efforts to restore the Dansey Road Scenic Reserve.

THE ORIGINAL CANOPY TOUR

This award-winning three-hour tour is perfect for all ages. Your guide will show you what New Zealand was once like from the top of the forest canopy and explain the conservation challenges that now exist.

In between the thrill of ziplines (flying foxes) and suspended tree bridges, you'll see and hear wood pigeons, tui, North Island robins, bellbirds, tomtits, fantails and more as they flit amongst the tree canopy around you. Create amazing memories that will last a lifetime.

THE ULTIMATE CANOPY TOUR

The Ultimate Canopy Tour is higher, longer and even more spectacular than the award-winning Original Canopy Tour. The Ultimate Canopy Tour is not for the faint of heart, this experience is a step up in adventure level and incorporates some incredible new features that will blow you away. It includes a suspended cliff-face walkway, swing bridges, controlled descent and an impressive 400m long tandem zipline so you can share the experience of our longest zipline together! Glide across wide open valleys, deep gorges and lose yourself in this untouched forest.





MOUNTAIN JADE

Step into our workshop and meet local artists as they craft jade art and jewellery by hand. Discover why pounamu (New Zealand jade) is highly treasured in Māori culture and explore the revered art of carving jade.

JADE DISCOVERY TOURS

Every day, you can join a free 15-minute guided tour of our jade carving workshop. While exploring the workshop, you'll see our artists transforming raw stone into carved art and discover the many different stages in the carving process. Pounamu plays an important role in Māori culture, and we'll take you on a journey into its traditional uses - uncovering the Māori values that breathe life into the stone. You'll also discover how jade was formed millions of years ago, deep within the earth, and experience the incredible variations in colour and texture of different types of jade from around the world. Tours run on-demand, 10am-5pm daily, no bookings required.

YOUR PIECE OF NEW ZEALAND

Come and explore the largest collection of jade art and jewellery in New Zealand. Each piece in our stunning collection is one-of-a-kind, and lovingly handcrafted. We can help you to find a personal treasure that will forever connect you to New Zealand or a meaningful gift to take home for a loved one.





WAIMANGU VOLCANIC VALLEY EDUCATIONAL FAMILY DAY OUT

Pack up the family and experience an unforgettable day exploring Waimangu Volcanic Valley – covered in regenerating native forest and fascinating flora, spectacular geothermal features and distinctive birdlife, Waimangu provides entertainment for the whole family.

Waimangu's history and legacy lends itself to plenty of rich experiences and stories for the whole family. The area was created following the Mount Tarawera eruption in 1886 – which devastated the area and destroyed what was known as the 'Eighth Wonder of the World', the Pink and White Terraces.

HANDS-ON EXPLORING

Let the kids get hands-on exploring the valley including discovering the temperature of some of Waimangu's amazing geothermal features using one of the digital 'temperature gun' thermometers.

Other highlights include Frying Pan Lake – one of the world's largest hot water springs with a surface area of 3.8 ha – and the picturesque Inferno Crater Lake which rises and falls as it heats and cools.

AUGMENTED REALITY

The wonders of Inferno Crater Lake's 38-day cycle can also be uncovered through Waimangu's augmented reality (AR) app. The app brings to life many of the Valley's fascinating

geological insights, like the now-extinct Waimangu Geyser, which regularly erupted in the valley between 1900 and 1904 to heights of over 400m!

Enjoy a boat cruise on Lake Rotomahana – now covering the famous Pink and White Terraces – and let the wonders of AR technology restore the sights that once brought so many intrepid travellers to the shores of the lake, and spark kids' imaginations about the mystery of the terraces' fate.

Waimangu's AR app is free to download on Apple and Android devices. Locations of interest are geo-tagged, allowing visitors to enjoy the natural beauty of Waimangu until there is something hidden to be seen with AR.

Open 8:30am | Last admission 3:30pm

OCTOBER SCHOOL HOLIDAYS GUIDED TOUR

Enjoy a guided tour specifically for families and little volcanologists during the October school holiday (28 September – 13 October 2019).

Visit waimangu.co.nz for more details.





WAIKITE VALLEY THERMAL POOLS, SPRINGS 'N' SPA

100% pure natural geothermal water, direct from the largest single source of boiling water in New Zealand provides a natural geothermal bathing experience for all to enjoy.

ROTORUA'S COMPLETE NATURAL GEOTHERMAL BATHING EXPERIENCE

Waikite Valley Thermal Pools, Springs 'n' Spa is a unique place to experience bathing in 100% pure natural geothermal waters. The boiling, sulphur free, calcite laden waters, direct from the depths of the earth, cascade into our outdoor Settler's Pool, Pergola Pool and Garden Pools, Sit 'n' Soak Pool and Tubs, and provide bathing options for all ages. A temperature range of between 35 and 40 degrees is offered. All pools are drained and refilled daily. Changing facilities, including showers and family change rooms are available.

Private Pool options (bookings recommended) are also available, as is swimsuit and towel hire.

TE MANAROA SPRING

An eco-trail which snakes its way alongside a boiling river leading to the spectacular Te Manaroa Spring provides a face to face encounter with raw natural geothermal activity at its best. A must see!

CAMPGROUND

To complement the pool complex is a simple yet quaint 28 site campground with shower, laundry and kitchen facilities. Being handy to other attractions in the area (just 6kms from Wai-O-Tapu Thermal Wonderland) means Waikite Valley Thermal Pools and Campground is the ideal spot for those passing through by van, motorhome or tenting. Due to popularity, bookings are recommended (info@hotpools.co.nz).

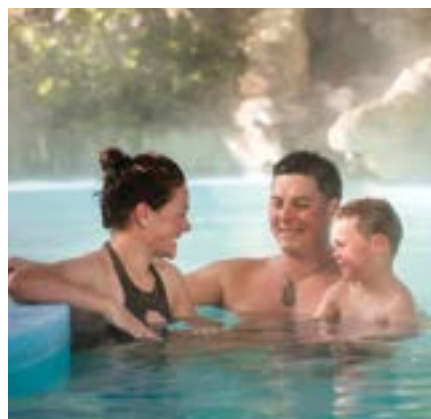
OPENING HOURS

10.00am to 9.00pm Daily
(except for Christmas Day)

First pools drained from 8.30pm.

Pukeko In A Punga Tree Café
open 12.00pm to 7.00pm daily.

Check out our reviews on TripAdvisor.





PARADISE VALLEY SPRINGS WILDLIFE PARK

Interact closely with a range of New Zealand's wild animals, native birds, farm animals and trout, and get up close to a large pride of African Lions.

DON'T JUST LOOK, GET HANDS ON

Animals that are found wild around the country such as deer, goats, tahr and wallabies, as well as a range of sociable farm animals like alpacas, emus and sheep can all be hand-fed throughout the day.

UP CLOSE WITH THE NATIVE BIRDS

Visit the Kea, New Zealand's infamous and comical parrot in their walk-through aviary, see kakariki and kereru birds and meet our friendly tui. Stroll through our waterbird wetland for great views of native and introduced waterfowl, and look out for the different native birds living wild around the park.

CASCADING WATERWAYS

Fern edged pools show off hundreds of rainbow and brown trout. Feed the wild trout in the natural stream and get eye to eye at the underwater window. Look out for large native long-finned eels lazing in their ponds.

NATURE AT ITS BEST

Pathways through native trees lead to our freshwater spring where you can drink straight from the source, then purchase some of our own bottled

'Paradise Pure' to take away with you. Take our elevated treetops walk in a tranquil and secluded area of the park, putting you up near the canopy of the trees.

THE PRIDE OF PARADISE

There is also a pride of African Lions that can be seen all day in an enclosure that allows visitors to get very close to these wild animals. The afternoon feeding show is a great time to see the lions active and to learn a bit more about the pride.

Paradise Valley Springs is open every day of the year from 8am to dark, with last entry at 5pm. Lion feeding is at 2.30pm everyday, followed by kea and possum feeding at 3pm.

We hope to see you at Paradise soon.





VOLCANIC AIR HELICOPTER AND FLOATPLANE TOURS

From the first experience of flight in either a floatplane or helicopter through to the thrill of exploring our stunning lakes district, vibrant geothermal reserves and remarkable volcanoes, Volcanic Air have an option for everyone.

Helicopter options include landing on two of New Zealand's most iconic Volcanoes, White Island and Mount Tarawera. White Island is our only permanently active volcano and walking around the active crater floor on an almost lunar like landscape is a once in a lifetime experience.

In contrast, landing on the summit of Mount Tarawera is awe inspiring. This is the site of the largest eruption in New Zealand's living memory and standing on the summit commands stunning views of the volcanoes massive craters and the surrounding lakes district and national parks.

Floatplane tours offer the romance of taking off and landing from various lake sites and flying over the region's unique volcanic landscape. Popular is our Mount Tarawera Waimangu flyover, however for the more adventurous, landing by floatplane at the hidden valley of Orakei Korako and exploring the valley's geothermal activity offers a unique over view of our lakes district volcanoes and geothermal playground.

New product is our Volcanic Adventure by Helicopter, this one hour tour includes a landing on Mount Tarawera with a flight that embraces spectacular aerial views of the Rotorua Lakes District, Tarawera Falls, Waimangu Geothermal Valley and Wai-O-Tapu Geothermal Reserve.

Volcanic Air is located conveniently at the Rotorua Lakefront, a short walk from many accommodation providers.

With flights starting from \$115 per person and ranging from 8 minutes to 3.5 hour. Whatever your timeframe, budget or special interest, join us for the experience of a lifetime and discover New Zealand at its best!

"What an amazing few hours I had taking a helicopter flight over to White Island. Not only do you get to land and walk around an active volcano but you have amazing views of the lakes, forests and coast as you fly out there."

Recent TripAdvisor Review





ROTORUA'S FAVOURITE ACTIVITY DESTINATION FUN FOR WHOLE FAMILY

Best day out in Rotorua? According to The Hit's Top Shop and Must Do, it's Skyline Rotorua, winner of Rotorua's favourite activity destination 2019.

Skyline Rotorua has something for everyone! With mountain bike trails, the famous luge, zip lining, wine tasting, award-winning dining and more – if you're looking for adventure, you've come to the right place.

If you're a mountain bike lover, you can't go past the 12 km network of trails to suit the keenest of riders – Skyline Rotorua MTB Park offers an epic day out on two wheels.

SKYLINE ROTORUA MTB PARK

Home to New Zealand's first year-round Gondola-assisted bike lift, Skyline Rotorua MTB Park is your gateway to world-class downhill mountain biking on your back doorstep.

Begin with a Gondola ride up Mount Ngongotaha to Skyline Rotorua MTB Park, then choose a trail that will get the heart pumping. From the Hipster to the Hucks n Hooves, Mr Black and The Fuzz, there's a trail for every level of expertise.

New to the family of thrill-inspiring rides is the Taxman. An expert graded track, it's double black diamond so you can expect something pretty full on! It was the track used as part of the

Enduro World Series which Skyline part hosted during this year's Crankworx.

ADRENALINE GALORE

It's not just fun on two wheels at Skyline – the luge is a firm favourite for the whole family with scenic, intermediate and advanced tracks. Young children can ride with parents – and Skyline's oldest rider is 101, so there's no excuse!

Dare to face your fears and test your limits at New Zealand's only Skyswing – the three-seated Skyswing hoists you 50m into the air giving you time to enjoy the world-famous Skyline view. It's up to you to make the drop – and once you've got your courage up, expect to reach speeds of up to 150kph!

Feel the thrill of flying with Zoom Ziplines. The 400m dual ziplines allow you to race family and friends at speeds of up to 80km/h over soaring treetops. It's the closest you can get to flying without wings.

Make your next family day out one to remember at Skyline Rotorua – your one-stop-shop for family entertainment!



WHERE THE CENTRE OF THE EARTH MEETS THE SKY.

Witness a land born of myth and legend, where Rūaumoko heats the earth from a world below, boiling mud and billowing steam into the air above.

Journey through native bush that opens up into geothermal landscapes, and bathe in mud and sulphur pools that revitalise the mind, body and soul.

Experience New Zealand's most active geothermal reserve and mud spa as it excites and soothes as it has done for centuries.

www.hellsgate.co.nz

351 State Highway 30
Tikitere, Rotorua
New Zealand



HELL'S GATE



POLYNESIAN SPA

Polynesian Spa is perfect for those seeking to rejuvenate their health and wellbeing and brings you our Mindful Moments retreat to help you switch off from your busy life to bring mind, body and spirit into balance.

Spend two days on our **Mindful Moments Retreat** surrounded by the natural elements of Rotorua and Polynesian Spa's therapeutic alkaline and acid waters. You will be guided through yoga, mindfulness, meditation, wellness workshops and take time to indulge in world-renowned Polynesian Spa therapy treatments.

Mindful Moments is hosted by our highly experienced Spa and Retreat Manager Helena Keenan and inspirational Polynesian Spa Health and Wellness ambassador Rachel Grunwell.

This unique geothermal bathing and soul soothing retreat originated here at Polynesian Spa in 2016 and has established itself as a must do health and wellness experience for those wanting to unwind, relax and reset.

BOOK NOW FOR THE LAST WEEKEND RETREAT OF 2019

9th - 10th November

Visit www.polynesianspa.co.nz/mindful-moments-retreat for more information and to secure your mindful moments weekend.





A ROTORUA MUST DO: REDWOODS TREEWALK

Experience this must do attraction by both day and night!
It is highly recommended and only 5 minutes from city centre.

The Redwoods Treewalk offers visitors the opportunity to see this natural treasure from a bird's eye perspective, up to twelve metres from the ground. Walk into the canopy of the forest, breathe in the pure air and listen to the chorus of native birds. No rush, just nature and you.

The daytime walk allows for breathtaking views from each of the 22 living decks along the half-kilometre journey. Informative signs allow visitors to take in the full scope of this natural gem.

Open every night, the enchanted forest comes alive with the Redwood Nightlights. The creations of award winning design and conservation icon David Trubridge, this immersive experience ensures that you discover the forest in a whole new light; enhancing the majesty of the Redwoods and the native ferns. This is a truly magical and surreal experience.

A Trubridge spiral & lantern entrance opened in March and a new high walk has just been added featuring see through bridge sections.

Open daily from 9:00 am till late.





EXPERIENCE THE KAITIAKI DIFFERENCE RAFT - SLEDGE - HIKE

Kaitiaki Adventures offers superior and unforgettable white-water rafting, sledging and hiking experiences. We give our clients an initiation into aspects of Maori culture through myth and legends and Karakia (Māori prayer) all whilst experiencing the ultimate adrenaline rush. World class half day experiences.

RAFT THE KAITUNA RIVER WITH OUR WORLD CLASS GUIDES

Snake through steep bush clad canyons and over 14 awesome drops including the highest commercially rafted waterfall in the world: The seven metre high Tutea Falls. Blended with a touch of Māori culture, this trip offers it all, for both white-water rafting enthusiasts and first timers. Grade 5.

KAITIAKI ADVENTURES ARE NEW ZEALAND'S ORIGINAL WHITE-WATER SLEDGING SPECIALISTS

There is something for everyone on this beautiful scenic excursion. Play holes and awesome rapids to negotiate your way through as you are in charge of your own vessel. Take the river on at eye level and propel yourself through the water by the flippers on your feet. Our qualified guides are there to encourage, motivate and help you where necessary.

NEW ZEALAND'S ONLY MT TARAWERA VOLCANIC CRATER WALK

Experience the majesty of Mt Tarawera. Infamous for its eruption on June 10th, 1886, Mt Tarawera created the world's youngest geothermal valley of

Waimangu, at the same time destroying the legendary Pink and White Terraces. This fully guided walking experience encompasses the unique landscape and history of the area.

Beginning with an off-road 4x4 journey through native New Zealand bush, transporting you to the crater's edge. With unmatched scenic vistas and 360 panoramic views this experience is ideal for all ages and includes an optional run in to the heart of the volcanic crater.

No previous experience is required on any of the excursions we provide. Kaitiaki Adventures will give you all the training and safety equipment of the highest standard to make it a safe yet unforgettable journey.

Our world class guides are all NZQA Qualified and our business is QualmarkGOLD Endorsed and a Maritime Safety certified operation.





SELF-DRIVE RAIL CARS RAILCRUISING

Imagine sitting in control of your own rail car travelling along a railway line with nothing ahead but the unobstructed curve of the rail stretching out into the distance.

RailCruising is the new tourist activity that allows people just like you the ability to travel along railway lines in your own powered self-drive, 4-seat railway vehicle called the RailCruiser.

The rail journey of 20km takes approximately 1.5 hours return through the beautiful Dansey Native Forest and rolling farmland with views out over Lake Rotorua. Listen to the commentary and discover a unique piece of New Zealand railway and local history.

The RailCruiser has comfortable seats with unobstructed views, is fitted with clear drop-down waterproof sides, windscreen wipers, blankets provided and comes with onboard heating.

RailCruising is a special experience to be shared with family and friends. It is popular with clubs and social groups with many combining RailCruising with lunch or dinner at the iconic Mamaku Railway Station.

How does RailCruising work? Groups of RailCruisers spaced apart, travel 10km together in one direction from Mamaku Railway Station to Tarukenga Railway Station. At Tarukenga the Rail

Cruisers are then turned and head back to Mamaku.

Cruising along at 20km/hr, you can listen to the audio tour and discover a unique piece of New Zealand railway history. This is the ultimate way to experience a railway.

The RailCruiser V3000 is the world's first fully automated, state of the art petrol-electric four seat self-drive hybrid rail vehicle. The RailCruiser has comfortable seats with unobstructed views, is fitted with clear drop down waterproof sides and comes with onboard heating.

Trips depart daily from Mamaku Railway Station at:

11am, 1pm & 3pm (Nov-Apr)
and 11am & 1pm (May-Oct).

Bookings are essential.

"What a great innovation! These little trains take you on a wee journey of 19km's return through the native forest seeing Farmland and Lake Rotorua."

Recent TripAdvisor Review





ROTORUA HERITAGE FARM

Rotorua Heritage Farm presents “Family Fun for everyone”. We offer fun, exciting and educational activities for all visitors - The Farm Tour, 3D Trick Art, Farmside Buffet.

THE FARM TOUR

An hour long tour led by a qualified team of guides, includes meeting nursery animals, travelling through our farm environment on covered trailers while experiencing and feeding farm animals with the guide providing educational information about the farm and its livestock. The experience concludes with a world class exhilarating dog show and sheep shearing performance.

3D TRICK ART

A 3 dimensional experience of 50 paintings that all ages can enjoy and is a first in the New Zealand market. It offers an educational, creative and imaginative experience. 3D Trick Art has been rated as 2nd out of 68 attractions in Rotorua according to Tripadvisor.

FARMSIDE BUFFET

Based on a kiwi farm landscape, Farmside Buffet offers a superb lunch buffet and a stunning venue for the special events.





THE LIVING MAORI VILLAGE - WHAKAREWAREWA

Where in the world do you have the opportunity to visit and engage with Maori people at their home in a geothermal village?

Set in a geothermal wonderland, Whakarewarewa – The Living Māori Village is one of New Zealand's oldest, iconic and most authentic destinations, offering an unforgettable day-time experience.

In our village, which is home to the Tūhourangi Ngāti Wāhiao people, enjoy a guided tour with a local and learn about Māori culture and traditions. Gain insights into life in a thermal village where locals utilise geothermal activity for warmth, cooking and bathing. You'll be amazed at our backyard: We have bubbling mud, steaming mineral pools and erupting geysers, including Pōhutu Geyser, NZ's largest and most active geyser.

Experiencing a Māori cultural performance is a must do and Whakarewarewa offers twice daily concerts, which includes the fearsome haka. Take some time and sample some local kai (food), there's hangi cooked by geothermal steam boxes, or the Hangi Pie, which will delight the foodies!

Come and visit our beautiful home and enjoy our famous hospitality. Set in a bubbling and steaming geothermal wonderland. Open daily - 8.30am – 5.00pm.



📍 17 Tryon St, Whakarewarewa
☎ (07) 349 3463

✉ info@whakarewarewa.com
🌐 whakarewarewa.com





EXPLORE SPECTACULAR NATURE AND GEOTHERMAL WONDERS

Just 20 minutes drive south of Rotorua, discover Wai-O-Tapu Thermal Wonderland.
CASHLESS Site – all major credit cards and EFTPOS are accepted.

Nestled in a natural bush setting and sculpted over thousands of years by volcanic activity, a series of defined tracks create a unique and wondrous experience.

“One of the 20 Most Surreal Places in the World” Trip Advisor

Explore spectacular nature at New Zealand's most colourful natural volcanic park. Walks through this unique geothermal area take between 45 and 90 minutes and provide a wide range of amazing photo opportunities and features including the world famous Champagne Pool, naturally coloured hot and cold springs, steaming ground, expansive vistas, huge volcanic craters and sinter terrace formations.

The Visitor Centre incorporates a souvenir retailing area, Café and ‘Sky Deck’ with indoor and outdoor seating. Picnic spots are available both inside the park and in our parking areas.

LADY KNOX GEYSER PRESENTED DAILY AT 10.15AM

Set in its own amphitheatre, a short drive from the main park is the Lady Knox Geyser which is presented daily at 10.15am. This provides a unique opportunity to

see a geyser in action. A knowledgeable presenter tells the story of the geyser every morning by way of introduction to the eruption.

OPEN DAILY

Winter: 8:30am to 5:00pm (last admission 3:45pm)

Summer: 8:30am to 6:00pm (last admission 4:45pm)

Christmas Day – 25 December: 8:30am to 5:00pm (last admission 3:45pm)

Wai-O-Tapu Thermal Wonderland is open daily – 365 days of the year including all Public Holidays. Wai-O-Tapu Thermal Wonderland is Smoke Free within the visitor centre and geothermal park.

Tickets to the geothermal park and Lady Knox geyser can be purchased online. Alternatively, ticket purchases are available at the visitor centre. It is advised to complete your ticket purchase by 10am if you are attending the Lady Knox Geyser show.

Book online for 10% OFF Use promo code FAMOUS

*Discount available for online tickets only.
For your own safety, please ensure you and your children stick to the walkways, stay behind the barriers, and obey the safety signs.*



📍 201 Waiotapu Loop Rd, RD3, Rotorua
☎ (07) 366 6333

✉ info@waiotapu.co.nz
🌐 waiotapu.co.nz





ORAKEI KORAKO — CAVE AND THERMAL PARK

Quoted by Lonely Planet Travellers guide as “arguably the best thermal area in New Zealand”: A self-guided walk of 2.5km which takes about 1 to 1.5 hours.

Situated just 25 minutes north of Taupo and 45 minutes south of Rotorua, nestled on the shores of Lake Ohakuri lies “The Hidden Valley” of Orakei Korako Cave and Thermal Park. Orakei Korako translated means “The Place of Adorning”.

Wander through a valley of unbelievable colour, bubbling hot springs, gushing geysers and unimaginable natural beauty preserved by its isolation from the outside world. Scenes from BBC’s Natural History Series “Walking with Dinosaurs” were filmed at Orakei Korako. Look down into Ruatapu Cave, one of only two geothermal Caves known to exist in the world and an experience not to be missed. 120 feet down a thermal mirror pool is situated at the bottom.

Lonely Planet Travellers Guide writes; “Orakei Korako is arguably the best thermal area left in New Zealand”.

Access to Orakei Korako is by ferry, at no extra charge. Average sightseeing time is about 1 hour. Ferrys do not run to a timetable, so you may visit the valley as soon as you arrive if you wish.

Free Overnight Campervan parking. (must be self-contained)

Find us on Facebook and Instagram.



📍 494 Orakei Korako Rd, RD2, Reporoa
☎ (07) 378 3131

✉ admin@orakeikorako.co.nz
🌐 orakeikorako.co.nz





VERY IMPORTANT KIDS (VIK) PROGRAMME

Have you heard? Holiday Inn Rotorua offers the largest hotel discount programme in Rotorua. Families can save up to \$300 per child at Rotorua's top family-friendly attractions when you stay with us.

BEING A PART OF THE HOLIDAY INN VIK PROGRAMME IS EASY AND MORE IMPORTANTLY, IT IS FREE!

There's no catch, just more fun. On arrival to Holiday Inn Rotorua, simply collect your free kid's wristband and get ready to unlock adventures, thrill and fun. With 11 partners, enjoy a fantastic variety of family-friendly attractions to choose from for all ages.

To receive your discounts, just show the green wristband at your chosen attraction – the logos are on the band and you will get a detailed booklet explaining each one.

START EXPLORING WITH VIK

Whether it's getting lost as you wind your way around 1.4km of hedge maze, a close-up encounter with farm animals or trailing through the majestic Redwoods Forest by mountain bike, there are a variety of experiences on offer with our hotel kids programme. You can enjoy wallet-saving

discounts from the best family-friendly attractions in Rotorua, including: Agrodome, aMAZEme, Motion Entertainment, Mountain Bike Rotorua, Rainbow Springs Nature Park, Redwoods Treewalk, The Farm Tour, ZORB, Velocity Valley, Whakarewarewa: The Living Maori Village, 3D Trick Art Gallery.

DISCOVER THE JOY OF TRAVEL THANKS TO HOLIDAY INN'S VIK PROGRAMME

Visit holidayinn.nz/kidsprogramme for more information and full range of discounts.

Holiday Inn Rotorua is proud to be a 4 Star Plus Silver Qualmark endorsed hotel.



DRIVEN BY ADVENTURE!

Set amongst the stunning backdrop of New Zealand forest, enjoy impeccable safety and highly interactive adventure experiences for all ages and abilities. Operating since 1992.



With a visit to Off Road NZ you will be driven by adventure! For half an hour or most of the day, there is a range of self-drive activities to keep you entertained.

4WD BUSH SAFARI

Buckle in behind the wheel of one of our 4WDs into a journey of the unknown. In amongst our stunning native forest the



challenges come thick and fast.

MONSTER 4X4 THRILL RIDE

Take on the monster! It's huge, it's loud, it roars with V6 power. Hold on tight for the ultimate thrill ride!

RACELINE KARTING

The fast track to excitement. Experience



the buzz and adrenaline of kart racing on our 1.2km outdoor circuit, reach up to 100km/hour on the 150m straight.

CLAYBIRD SHOOTING

Test your skills and accuracy! With real shotguns and live ammunition. It's not as easy as it looks.

📍 193 Amoores Rd, RD2, Rotorua
☎ (07) 332 5748

✉ drive@offroadnz.co.nz
🌐 offroadnz.co.nz



ZORB ROTORUA – ICONIC NZ INVENTION

Superman dive into a giant inflatable ball and roll down Mt Ngongotaha with ZORB, where the fun will have you laughing uncontrollably.



Discover FOUR different ball rolling tracks – the world's longest zig-zag Sidewinder Track, the smooth 'n' fast double Straight Track, MEGA Track -the longest, fastest and steepest track in all the land, and the newest track; Big Air, our latest thrill ride. Ride with water or without water, the choice is yours!



The experience of rolling down a hill inside a giant inflatable ball has been an iconic adventure experience since Andrew and David Akers invented and developed the first ever ZORB site in the world back in 1997 at this very location!



To this day, Rotorua is the ONLY location in New Zealand where you can experience this amazingly fun and bizarre bucket list activity. Suitable for all ages and abilities.

☎ (07) 343 7676 or 0800 646 768
✉ info@zorb.com

📍 525 Ngongotaha Rd, Fairy Springs, Rotorua
🌐 zorb.com



HOBBITON™ MOVIE SET

Be transported to the enchanting village of Hobbiton as featured in The Lord of the Rings and The Hobbit Trilogies.

A tour of Hobbiton™ Movie Set is an experience to tantalise the senses of visitors from all across the globe, as guests find themselves engulfed in the sights, smells, sounds and tastes of the Shire™.

Join a tour from Rotorua or travel to Matamata on a journey through the unequivocal beauty of the farmland, and be escorted around the Movie Set, showing the intricate detailing, pointing out the most famous locations and explaining how a slice of New Zealand countryside was transformed into a movie set for one of the largest film franchises of all time.



📍 501 Buckland Rd, Matamata 3472
☎ (07) 888 1505

✉ office@hobbitontours.com
🌐 hobbitontours.com



HOBBITON
- MOVIE SET -

ROTORUA DUCK TOURS

Explore Rotorua's natural landscapes on New Zealand's only WWII Landing craft, 'The Duck'. Our tours offer a great introduction to Rotorua with an educational commentary, perfect for all ages.

While you enjoy the incredible scenery and travel in the volcanic craters of Rotorua, your legendary "Conducttor" will bring Rotorua alive by retelling the stories of the past, along with providing information on Maori culture, geothermal wonders, historic sights, flora and fauna. The ducks have clear, roll down sides and on cold days we also have blankets available making the Duck suitable for any weather condition.

Two tour options available, the Rotorua City and Lakes Tour (90min) and the Tarawera and Lakes Tour (120min) running every day in all weather. Language translation sheets available. Our Tarawera & Lakes Tour is a more focused look at Rotorua's rich history and environment.



📍 1241 Fenton St, Rotorua
☎ (07) 345 6522

✉ info@ducktours.co.nz
🌐 rotoruaducktours.co.nz



KATOA LAKE ROTORUA

Uncover Lake Rotorua on and off the water. Experience the thrill of Jet Boating, Parasailing or discover Mokoia Island's ancient history or cruise through our crater lake.



FEEL THE THRILL

Excitement and exhilaration on Lake Rotorua. V8 engines to feel the ROAR, 400 feet in the air to feel like you're FLYING, 360 turns to feel the SPRAY. Choose your level of THRILL from jet boating to parasailing!



DISCOVER THE CULTURE

Uncover an ancient wildlife sanctuary with deeply rooted Māori history on Mokoia Island. Bird watching, Māori Culture and Geothermal activity all await you on this guided tour. Choose between our Speed & Spins tour or Water Taxi for your exclusive access to Mokoia Island.



CRUISE ON THE LAKE

Where local Māori history meets untouched beauty. Unwind and admire the beautiful scenery while we cruise on Lake Rotorua to either Mokoia Island or through to Lake Rotoiti, where you can enjoy a soak at Manupirua Hot Springs.

PO BOX 1193, Rotorua
0800 538 7746

info@katoalakerotorua.co.nz
katoalakerotorua.co.nz



LAKEVIEW GOLF AND COUNTRY CLUB

Come and enjoy a unique 18 hole par 72 golfing paradise with stunning views where everyone is welcome.



The golf course has undulating fairways and challenging greens with stunning views overlooking Lake Rotorua and Mokoia Island. Hazards include bunkers and bush clad gorges. As you play your round of golf you will enjoy the spectacular vistas across Lake Rotorua of Mount Tarawera and Mount Ngongotaha which stand



proudly steeped in local history in the Rotorua landscape. The peace and tranquility of Lakeview and the sounds and antics of native birds such as the Tui, Bellbird, Fantail and Kereru will add to this unique golfing experience. The club has a fully stocked pro shop and covered driving range for all your golfing needs. Clubs, trundlers and



electric carts are available for hire. Catering and bar facilities are available on Tuesdays, Saturdays and Sundays, other days by arrangement. Hold your corporate day or staff function with us this year! All enquiries can be made by contacting the Pro Shop.

Mention this ad and receive 10% off your green fees.

(07) 357 2341
lakeview@golf.co.nz

lakeviewgolf.co.nz
704 State Highway 5, Tarukenga, Rotorua



PURE CRUISE

Lake Rotoiti has many hidden treasures, from thermal hot springs to glow worm caves. What better way to explore than aboard the Sailing catamaran Tiua!



If you only do one thing in Rotorua, make it an exclusive eco-sailing experience on Tiua, a 53ft sailing catamaran. Cruising the sparkling fresh waters of Lake Rotoiti with Pure Cruise encapsulates the best of Rotorua; pristine environment, natural thermal bathing pools, top-class trout fishing and rich Maori history.

Guests can take the helm, help trim the sails, swim from the yacht into glow worm caves, or simply relax and savour the scenic splendour complemented by fine New Zealand cuisine, quality beverages and unsurpassed service.

Ideal for family reunions or corporate gatherings Pure Cruise can create a truly

memorable experience for you, your family and your team under sail on the stunning Lake Rotoiti.

Chat to our award winning team about the yacht or other vessels, which suit any budget or group size.

📍 366 State Hwy 33, Mourea, Rotorua
☎ 0800 272 456

✉ info@purecruise.co.nz
🌐 purecruise.co.nz



RAINBOW SPRINGS NATURE PARK

Play, discover, explore! Rainbow Springs is proudly home to some of New Zealand's rarest species, and the world's largest kiwi hatchery!



Fun and nature combine to create the ultimate day out! Learn and see New Zealand's unique wildlife with our complimentary guided park tours, visit our national icon in the new, interactive Kiwi Burrow and see real conservation in action with a National Kiwi Hatchery tour.

From kiwi to kea to kaka to tuatara, Rainbow Springs is home to a large range of rare and fascinating wildlife. Our knowledgeable guides are passionate about sharing New Zealand's wildlife story with you.

Enjoy the new Taonga Experience, the range of fun activities sprinkled throughout, and finish your visit off with a ride on the Big Splash! Rainbow Springs really is a jam packed day out. Our park residents and team look forward to welcoming you.

📍 192 Fairy Springs Rd, Rotorua
☎ (07) 350 0440 or 0800 724 626

✉ info@rainbowsprings.co.nz
🌐 rainbowsprings.co.nz



MAMAKU BLUE — BLUEBERRY EXPERIENCE

Welcome to the wonderful world of blueberries. You will be amazed at the many products made from these little globes of health.



Famous for their delicious blueberry juice, ice cream, chutneys, jams and award-winning wines and liqueurs, Mamaku Blue Blueberry Farm create the only blueberry experience of its type in NZ where, at the blueberry shop, you can see and taste these miracle berries made into more products than you ever thought possible.



You can shop online for all our blueberry and gooseberry products including frozen berries, jams, health powder, gift baskets and more.

Full of healthy antioxidants and natural vitamins, our 100% blueberry juice has people around the world talking about how it has helped with health problems



such as kidney failure, energy levels and eyesight.

While you're there, visit our Blueberry Café and indulge in our world famous (on Trip Advisor) blueberry pancakes, crepes, and other taste sensations. Or get behind the scenes in one of our escorted orchard and farm tours.

📍 311 Maraeroa Rd, Mamaku
☎ (07) 332 5840

✉ info@mamakublue.co.nz
🌐 mamakublue.co.nz



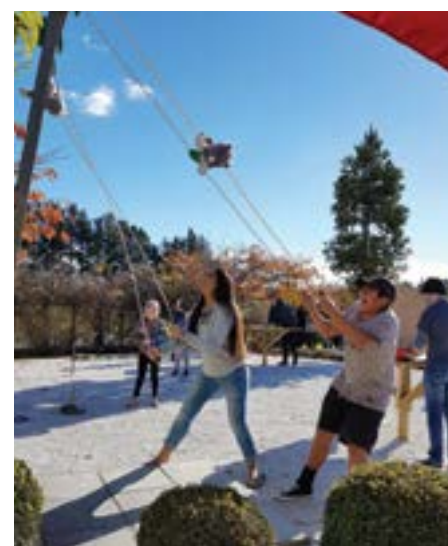
AMAZEME ROTORUA — "HAVE FUN - GET LOST!"

Old fashioned family fun for all ages. 1.4 km of hedges, giant board games, small animals, picnic areas and many other activities.

aMAZEme opened in 2010 with family fun in mind, a destination where two or three generations can come and have a great time together, in a lovely relaxing environment, whilst enjoying their own picnic.

We have a range of games including, tic-tac-toe, tug of war, balance bar wipe out, sack races, swing ball, frisbees, giant connect four, giant ludo, giant snakes & ladders and giant checkers. The prime attraction is of course our 1.4km Hedge Maze, with an average completion time of 20mins (parents, don't let your children win!). For those who like small animals, we have rabbits, doves and zebra finches.

Mention this ad and get 10% off the normal retail price.



📍 1335 Paradise Valley Rd, Rotorua
☎ (07) 357 5759

✉ amazeme@xtra.co.nz
🌐 amazeme.co.nz



ULTIMATE JET BOAT ADVENTURE

At New Zealand RiverJet we specialise in the extraordinary jet boat experience with tours to two of this country's most unique destinations.



Thermal Safari (2.5 Hours) - Orakei Korako, also known as the "Hidden Valley" is rated by Lonely Planet Travel Guide as one of the top 5 geothermal parks in the world. It is New Zealand's largest geyser field and home to the stunning silica terraces, the Sapphire Geyser and one of only two Geothermal Caves in the world.



The Squeeze (2.5 hours)- Prepare for the perfect fantasy experience with the serenity of New Zealand's untouched nature, the adventure of squeezing through tight rock passages and the refreshment from dipping in a geothermal waterfall. Immerse yourself in the soothing waters of this naturally heated hot spring.



Scenic Blast - A 50 min Jet Boat Tour down the mighty Waikato River and into the stunningly beautiful Tutukau Gorge. See native birds, plush farmland and 50m high canyon walls before returning back at high speed for the thrill of a lifetime.

1 Tutukau Rd, Mihi
(07) 333 7111 or 0800 RIVERJET

sales@riverjet.co.nz
riverjet.co.nz

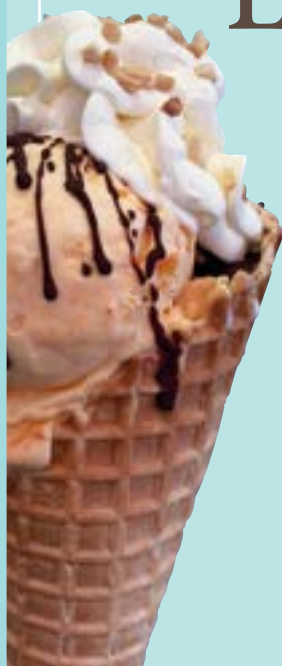


Lady Janes Ice Cream Parlour

fresher, brighter & yummiier than ever

relax, indulge & check out our new look:

- Over 50 flavours
- Danish Waffle Cones
- Sundaes
- Warm Desserts
- Milkshakes
- Coffee
- Bike Hire



@ladyjanesicecream

1092 Tutanekai St (Eat Street) | Rotorua

VELOCITY VALLEY ADVENTURE PARK

Velocity Valley, where speed, adrenaline and fear collide. Experience iconic New Zealand inspired activities within one location.



Velocity Valley is the home of speed and adrenaline, catering for all ages and adventure abilities. Located within the sweeping hills of Paradise Valley in Rotorua for over 20 years.

Feel the high-speed acceleration as you drift our sprint course with the furiously fast Agrojet.



Live out your wildest dreams and fly like a bird defying gravity 9m above the ground with Freefall Xtreme. Why not let us turn your biking experience upside down in our pedal powered pods with Shweeb Racer or leave you screaming for more with the Swoop giant sky swing as you share the fear with friends or family.



Lastly the ultimate and unforgettable adrenaline rush of bungee jumping from 43m high above the ground.

With so much to offer in one location we have multi-ride packages for individuals and families alike.

***See website for more details.**

📍 1335 Paradise Valley Rd, Rotorua
☎ 0800 949 888

✉ reservations@velocityvalley.co.nz
🌐 velocityvalley.co.nz



AGRODOME

Get up close with a range of furry and feathery friends with Agrodome's iconic Farm Show and Farm Tour! Its the ultimate farm experience.



Located on 350 acres of lush working farmland only 10 minutes from Rotorua city centre, Agrodome is the perfect day out for everyone.

Millions of visitors from all over the globe have been wowed by our Farm Show and Farm Tours.



Our fun-filled Farm Show takes you on a journey of New Zealand farming in action. Learn about and watch sheep-shearing, cow milking, stock auction, baby animal feeding, sheep dog demonstrations and much much more! Tickets to the Farm Show include access to our Farmyard Nursery, home to baby animals all year round.



Our guided Farm Tours allow you to explore our real-life farm, getting up close and personal with a range of furry and feathery friends. Hand-feed the animals, taste our produce and see a real life working farm and orchard in action!

📍 141 Western Rd, Rotorua
☎ (07) 357 1050

✉ info@agrodome.co.nz
🌐 agrodome.co.nz



ONE OF NEW ZEALAND'S MOST BEAUTIFUL DAY WALKS

Lake Tarawera has amazing natural beauty, a geothermal beach and is rich in Maori history just 12km from Rotorua.

The 15km Tarawera Trail walk at Lake Tarawera, Rotorua is one of the great day walks in New Zealand.

It starts just south of the famous Buried Village devastated in the 1886 Tarawera eruption and finishes at Hot Water Beach.

Reward yourself at the end of your walk with a soak in the geothermal lake waters after your stunning forest and lake-edge walk. Then catch the Water Taxi back that includes a free shuttle back to your starting point. Average 5hr duration.

Check out our other tours and walk options.



The Landing, Tarawera Rd, Rotorua
(07) 362 8080

info@totallytarawera.com
totallytarawera.com



THE SPA AT MILLENNIUM HOTEL ROTORUA

Reward yourself with a relaxing experience at The Spa, Millennium Hotel Rotorua. Let us take care of you - mind, body & soul.

Warm serene waters and soothing treatments await the body looking for relaxation and revival. With a luxurious menu of over thirty different massages, facials, body and beauty treatments, reward yourself with a truly indulgent experience.

Soak in the thermally heated hot pools, leave feeling refreshed and rejuvenated.

Air conditioned therapy rooms for all year comfort winter or summer.

Open 7 days 9am - 8pm

FOOD & BEVERAGE OPTIONS

Order a delicious tasting platter, a light lunch or a glass of bubbles to enhance your spa experience!



Millennium Hotel Rotorua, cnr
Eruera & Hinemaru Sts, Rotorua

(07) 349 9635
thespa@millenniumhotels.co.nz



BURIED VILLAGE

New Zealand's most visited archaeological site where stories of the Tarawera eruption come to life.



The Tarawera Eruption destroyed the village of Te Wairoa, the Pink and White Terraces and with it the birthplace of tourism in New Zealand.

Encounter first-hand how this historical New Zealand event devastated the landscape and lives of the people of Te Wairoa.



Exhibitions in the award winning museum share remarkable stories of human resilience, tragedy and survival.

Walk over 1km of excavated heritage sites and see where the people of Te Wairoa lived and worked. Challenge the kids to Smithy's treasure hunt.



Complete your visit with a beautiful stream side walk showcasing New Zealand native flora and fauna. Stand in the spray of the 30m Te Wairoa Falls as it plunges over the Waitoharuru cliffs. Enjoy a scenic 15 minute drive from the city centre Allow approximately 1-2 hours

Open 9-5pm Daily

📍 1180 Tarawera Rd, Rotorua
☎ (07) 362 8287

🌐 buriedvillage.co.nz



#BuriedVillage
#BuriedVillage



**HERITAGE CARD
AVAILABLE**
FOR LOCALS & NZ RESIDENTS



OPEN 7 DAYS
1180 Tarawera Road, Rotorua
www.buriedvillage.co.nz

TE PUIA

The Centre for New Zealand's Māori Culture and Geothermal Wonders.



Spanning 70 hectares, Te Puia is home to the world famous Pōhutu Geyser, bubbling mud pools, live kiwi birds and stunning Māori architecture. Visitors have an opportunity to see Māori cultural performances and tour our national schools of carving and weaving.



Hourly guided tours share stories that were passed down from our ancestors.

Our brand new restaurant, Pātaka Kai, also serves a mouth-watering banquet of authentic Māori kai (cuisine) overlooking the magnificent Pōhutu Geyser.

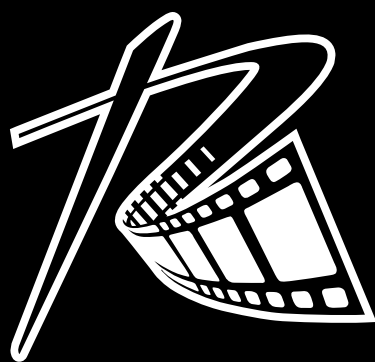


Te Puia|New Zealand Māori Arts and Crafts Institute is an iconic destination for visitors from near and far.

Open 365 days: Summer 8am-6pm, Winter: 8am-5pm.

📍 Hemo Rd, Rotorua
☎ (07) 348 9047 or 0800 TE PUIA

✉ reservations@tepuia.com
🌐 tepuia.com



**THE HOME OF
AMAZING
VALUE**

**ALL DAY
EVERY DAY**

WWW.READINGCINEMAS.CO.NZ

1281 ERUERA ST, **ROTORUA** 07 349 0061



DRIFTKARTZ

Race on one of the slipperiest go-kart tracks in New Zealand! With the best price on go karting in Rotorua.

Try out our purpose built slippery indoor go-kart race track. Perfect for all weather conditions.

Our race track has a special coating giving you one of the most difficult racing surfaces you will ever encounter, making for an out of control racing experience.

Imagine trying to control an out of control race car! That's what DriftKartz is all about.

Great for:

- Families
- Team building
- Corporate events
- Sports teams
- Schools
- Social clubs

📍 10 Old Taupo Rd, Rotorua
📞 (07) 345 6211
✉ admin@driftkartz@xtra.co.nz
🌐 driftkartz.co.nz



BIBLEWORLD MUSEUM & DISCOVERY CENTRE

A great place for adults and children to explore what life was like in Biblical times.

Enjoyable and educational! Check out the detailed handcrafted scale models in our Old and New Testament galleries. See over 70 ancient artefacts used in Biblical times. Try out a range of hands on activities, electronic quizzes and interactive maps.

Adults and children can dress as a Roman soldier, blow a shofar, smell frankincense and myrrh, play the ancient game of Senet and much more.

See website for opening hours.

Free Entry for all visitors!

📍 1141 Eruera St, Rotorua
📞 (021) 909 842
✉ bibleworld@xtra.co.nz
🌐 bibleworld.org.nz



PRESENT THIS AD
& RECEIVE
A FREE GIFT
WITH YOUR WINE
TASTING*



VOLCANIC HILLS WINERY

TASTING ROOM OPEN DAILY

11AM - LAST TASTING @ 5.15PM

Except Christmas Day, Good Friday & Easter Sunday



VOLCANICHILLS.CO.NZ



VOLCANICHILLSWINE



VOLCANICHILLSWINERY



TOP OF THE SKYLINE GONDOLA

**Terms & Conditions Apply*



HORSE TREKKING LAKE OKAREKA

Horse and pony rides through native bush, over green pastures and spectacular views of Lake Tarawera.

Rides to suit all abilities from beginners to experienced riders. Daily departures at 10am, 1.30pm, and times to suit. Various trekking routes on offer, depending on weather, trail conditions and rider experience. Trek through dense native bush, onto green pastures, across

sheep and cattle country, and to the top of the farm with views over Lake Rotorua, Lake Okareka, Lake Tarawera, Lake Rotomahana, Lake Okataina, the Green Lake and Mount Tarawera. What a fantastic way to enjoy the fresh air and experience the region. Treks from 30 minutes to 3 hours.

📍 51 Acacia Rd, Lake Okareka, Rotorua
📞 (021) 292 2233
✉ lucy@treklakeokareka.co.nz
🌐 treklakeokareka.co.nz





BLUE LAKE TOP 10 HOLIDAY PARK - ROTORUA

The best of both worlds – close to attractions and shops yet far enough from the bustling city to enjoy the peace and quiet, and avoid the sulphur smell.

We are Rotorua's only TOP 10 Holiday Park located on the picturesque and stunning Blue Lake. Choose from our lake-view motels to self-contained units, or kitchen and standard cabins. The Park offers quality accommodation to suit any sized group and budget. We also have the option of large powered and non powered sites set on 10 acres, surrounded by native bush.

Rotorua is home to over 15 beautiful Lakes and Blue Lake TOP 10 is ideally located to take advantage of them! Walk across the road for a swim in Lake Tikitapu or take a short 5 minute drive to Lakes Okareka or Tarawera. Whether you're here for boating, fishing, kayaking or to simply relax on the beach, Blue Lake TOP 10 is the perfect base for your holiday.

Also on the doorstep is the beautiful Redwood Forest, which is full of great walking, running and of course the famous mountain bike tracks. These tracks can now be accessed directly from your accommodation. The forest offers endless trails for beginners to the experienced mountain biker. Trails link up with the renowned and purpose-built tracks which have made the forest a 'mecca' for mountain bikes.



📍 723 Tarawera Rd, Blue Lake, Rotorua
☎ 0800 808 292

✉ info@bluelaketop10.co.nz
🌐 bluelaketop10.co.nz





CEDARWOOD LAKESIDE SPRING BREAK IN ROTORUA!

Sit back, relax and watch the world pass you by...

Welcome to Cedarwood Lakeside – Motel & Conference Venue, one of the most relaxing locations in Rotorua. Positioned on 2 acres of park like surroundings, directly on the shores of Lake Rotorua and just a short 8 minute drive from the hustle & bustle of the City.

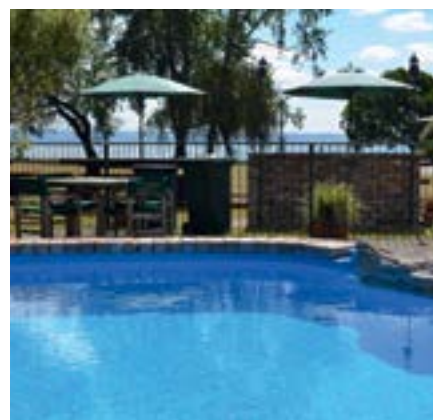
Our property consists of 16 spacious, comfortable & cosy units ranging from Studio's through to our popular Two Bedroom Lakefront Suites with endless views. To make your stay enjoyable, our facilities include a heated in ground swimming pool (seasonally heated), private indoor spa, outdoor hot tub, BBQ & picnic area, children's playground including two trampolines, petanque, secure bike shed & wash down area, coin operated guest laundry, book & DVD library, plenty of off street parking for boats, trailers & jet skis and free unlimited WiFi (**Ultra Fast Fibre internet**) to keep you connected.

We can even arrange a float plane ride for you with collection direct from our lake front (weather permitting) or a trout fishing charter with pick up from our jetty – what could be easier?!

We have been privileged to be awarded with a 2017 Trip Advisors Travellers Choice Award in the Family category for the fourth year and have been successful in gaining a further 2017 Trip Advisor Certificate of Excellence for the fifth year running. This is all based on our guests feedback, so rather than take our word for it, come & experience what our previous guests have raved about!

Book direct for best options & we look forward to welcoming you soon!

"My wife and I and three grandchildren traveled for a month in Australia and New Zealand and this was the best place we stayed. Everything was in excellent shape, the people there were very friendly and helpful. We really enjoyed our time."
Recent TripAdvisor Review





ROTORUA THERMAL HOLIDAY PARK

With more than 150km of purpose built mountain biking trails just a 5 to 10 minute bike ride from our park, you won't find a better location for your forest adventure.

Enjoy FREE hot mineral pools, on-site bike wash and storage. Stay in our tent, campervan or caravan sites, dorm rooms, studios, authentic log cabins, ensuite log cabins, fully self-contained flats, or luxurious fully equipped and spacious motel units. If you are booking for a large group be sure to ask about our group discounts.

Our guests have access to our well maintained communal kitchen facilities, gas BBQs, bathrooms, laundry, TV rooms, swimming pool (seasonal), kids play area and kids mountain bike track. A visit to Rotorua is not complete without soaking in our free hot mineral pools which are accessible to all guests.

Rotorua has become a mecca for mountain bikers, travellers and visitors from around the world, making our grounds the perfect location for all holiday types. We are the closest holiday park to the Whakarewarewa Forest biking tracks, minutes away from the City Centre and walking distance to popular attractions like Te Puia and The Rotorua Golf Club.





REGENT OF ROTORUA

Escape ordinary. For that romantic retreat, or an adventure for the family, Regent of Rotorua is an urban oasis, a sanctuary in the city, offering a restorative, rejuvenating experience.

STAY...

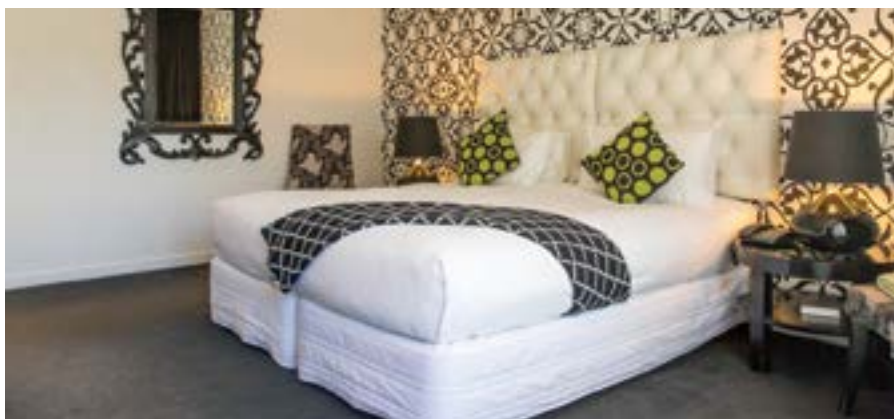
The Regent marks the epitome of chic, luxury accommodation in the city. Your boutique suite is perfect for your next romantic getaway, for those families or friends traveling together, your 2-bedroom Executive Suite offers additional space for the family. Our thermally heated swimming pool is a constant 28C for year round enjoyment. Soak away aches & pains in our indoor mineral pool drawn from deep underground.

DINE...

The hip and stylish Regent Room offers you a range of contemporary New Zealand cuisine from our extensive menu including sharing plates & tapas, degustation dinner and tempting desserts. Open 7 days a week from 6.30am till late serving breakfast, lunch, bar snacks and dinner.

LOCATION...

In the heart of the city, a short walk from the lake front, shopping, cafés, spas & easy drive to Rotorua's attractions.



📍 1191 Pukaki St, Rotorua
☎ 0508 734 368 (within NZ)

✉ info@regentrotorua.co.nz
🌐 regentrotorua.co.nz





The
**JOY of
TRAVEL**
starts here

**Stay with us and unlock exclusive
family discounts at 11 Rotorua
attractions**

Visit www.holidayinn.nz/kidsprogramme

Holiday Inn

AN IHG® HOTEL

ROTORUA



AURA ACCOMMODATION

Centrally located accommodation setting the benchmark in friendly personalised service and sustainable practices.



Located within a block of the lakefront, 'Eat Street' and Government Gardens, Aura has become the hub for those seeking to make the most of their time in Rotorua. Whether that be taking the local team's advice and exploring a wide range of sights or enjoying the extensive facilities at Aura.



The geothermally heated pool, private thermal pools, free bike and scooter use, BBQ and steambox cooking facilities, Sky TV and Netflix give every reason to laze about the property. Come and experience this unique place putting people and the environment at the forefront.



2019 Trip Advisor Awards

- Travellers Choice Award 2019
- 3rd Best Service Hotel in NZ
- 6th Best Service Hotel in the South Pacific

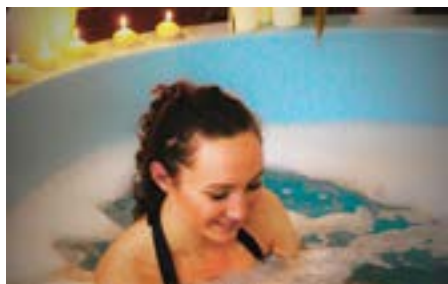
📍 1078 Whakaue St, Rotorua
☎ 0800 333 799

✉ info@aurarotorua.co.nz
🌐 aurarotorua.co.nz



ARISTA OF ROTORUA - ARISTA CAPRI

Arista of Rotorua VOTED for a third time Number 1 Family Hotel in New Zealand on Trip Advisor 2019. Arista Capri ranked 9.3 on Booking.com as of March 2019.



Both our properties are conveniently located next to each giving our guests more options to spread across both motels or to choose their favourite room. Free high speed WIFI, private spa pools, geothermal heated rooms through-out



winter, two barbeque areas, mountain bike storage and wash down areas. Bike hire also available not to mention our cool kid friendly playground. Our motels are perfect for families, couples or that wandering corporate.



BEST rates guaranteed when booking direct either by utilising our "Deal of the Day" promo code via our websites or contact us:

Arista of Rotorua **0800 114 562**
Arista Capri **0800 501 506**

✉ stay@aristaofrotorua.co.nz
✉ stay@aristacapri.co.nz

🌐 aristaofrotorua.co.nz
🌐 aristacapri.co.nz



QUEST ROTORUA CENTRAL

Come and experience this award winning Apartment Hotel in the heart of the city, offering the perfect home away from home whilst in Rotorua.



After a day of mountain biking in the Redwoods, zip lining through the Mamakus, or white water rafting the Kaituna River - it's always nice to return to your luxury apartment surrounded by all the creature comforts of home.

Enjoy fully air-conditioned and double-glazed apartments, with sumptuous



king size beds and full kitchen and laundry facilities. Soak in a private hot tub in our executive apartments and surf away with FREE unlimited high speed WiFi, or more simply chill out in your apartment with over 150 FREE movies on demand.

Book direct for the best available rates.



2019 Travellers' Choice Award
Ranked #1 - Top 25 Hotels
- New Zealand

2018 Proud to enter the Hall of Fame.
Traveller reviews helped us earn a Certificate of Excellence for the 5th year in a row.

📍 1192 Hinemoa St, Rotorua
☎ (07) 929 9808

✉ host@questrotoruacentral.co.nz
🌐 questrotoruacentral.co.nz



JET PARK HOTEL ROTORUA

Experience authentic New Zealand hospitality and four-star hotel accommodation, 5 minutes walking distance to Rotorua town. 63 modern, spacious rooms with complimentary Wifi and parking.

Jet Park Rotorua is the perfect "base" for exploring the region and our knowledgeable and passionate staff go above and beyond to provide inspiration for activities and unique experiences. Friendly, warm-hearted kiwi hospitality is integral to our philosophy, we value your time and do our best to ensure your stay in Rotorua is enjoyable and relaxing.

Facilities include 63 modern, spacious rooms plus family suites, twin rooms and apartments- some with spa baths; café, swimming pool and outdoor spa, bike wash and storage, kid's indoor and outdoor play areas, outdoor seating and book library.



📍 237 Fenton St, Rotorua 3010
☎ (09) 275 4100 or 0800 538 466

✉ reservations@jetpark.co.nz
🌐 jetparkrotorua.co.nz



REGAL PALMS RESORT

Luxury accommodation located in the heart of Rotorua, Regal Palms Resort offers exceptional facilities and unsurpassed Kiwi hospitality.

At Regal Palms, we understand that hospitality is an art, embracing service, attitude and respect for the individual needs of every guest. Expect the highest level of customer service every time you stay with us.

Our modern, well-equipped superior suites and apartments are ideal options for couples, families and groups.

Every suite and apartment has a great range of features, including a spa pool - perfect to sink into at the end of the day!

You may want to relax with a drink in the cosy guest lounge, enjoy our heated swimming pool, or use our free bicycles exploring the city - there's something for everyone!



Check our website for packages and promotions — make sure you get the best deal when you stay with us!

Regal Palms is the perfect location for your upcoming business meeting or conference.



📍 350 Fenton St, Rotorua
☎ (07) 350 3232 or 0800 743 000

✉ experience@regalpalms.co.nz
🌐 regalpalms.co.nz



CENTRALLY LOCATED 5 STAR HOLIDAY PARK

Rotorua TOP 10 Holiday Park is Rotorua's multi award winning 5 Star - Premium graded Holiday Park, located just 1km from the city centre.



The Rotorua TOP 10 Holiday is only a short walk to the heart of the city, with a range of affordable accommodation options to suit families, couples, or corporate travellers during their visit to Rotorua.

Offering TOP quality accommodation ranging from our 4 star motels to our



well-equipped cabins- perfect for those looking for accommodation on any budget. We also offer all-weather powered campsites, ideal to experience & re-discover those childhood memories. For extra comfort we have a fireplace & 50 inch TV in the communal lounge, our free spectacular mineral pool complex, free unlimited WiFi for



each guest, free entry to Golds Gym Rotorua, an adventure playground, trampolines & newly added jumping pillow.

Rotorua TOP 10 Holiday Park is a multi award winning park situated in the heart of Rotorua, why stay anywhere else?

📍 1495 Pukuatua St, Rotorua
☎ 0800 223 267

✉ stay@rotoruatop10.co.nz
🌐 rotoruatop10.co.nz



LAKE ROTORUA HOTEL

Nestled beside the beautiful, mystic shores of Lake Rotorua, this contemporary hotel is positioned right in the heart of this unique geothermal region.



Just an easy 15-minute stroll or 5 minute drive to Rotorua's CBD, the hotel affords easy access to the astonishing array of cultural, adventure and recreational activities available in this amazing area. The sacred, ancestral home of the Bay of Plenty Maori People, Rotorua is a bustling leisure destination with so much to do and see.

Within easy reach of dining and entertainment options, the Lake Rotorua Hotel offers contemporary, well-appointed guest room accommodation with a swimming pool and a heated spa pool. An ideal base to experience the diversity that Rotorua offers, the hotel features a breakfast room, guest room wheelchair access

and complimentary outdoor, on-site car parking.

The Lake Rotorua Hotel was awarded Qualmark's Silver Award for sustainable Tourism in 2019. Qualmark recognises businesses that are delivering holistically sustainable experience for guests and we are proud to have achieved silver status.

📍 131 Lake Rd, Rotorua
☎ (07) 346 2110

✉ reservations@lakerotoruahotel.com



VR ROTORUA LAKE RESORT

Set on 6 acres on the shores of the beautiful Lake Rotoiti Park Racecourse.

VR Rotorua Lake Resort is located just 15 minutes drive from central Rotorua. It features a heated outdoor pool, a sauna and tennis courts. Guests enjoy free unlimited WiFi.

All rooms feature a private balcony or patio offering either stunning views over

Okawa Bay or the surrounding gardens. Each includes satellite TV, tea/coffee making facilities and a minibar. The Grill Restaurant is open for breakfast, lunch and dinner and serves modern New Zealand cuisine.

For more information please visit vrrotorua.co.nz

📍 366 State Highway 33, Mourea, Rotorua
☎ (07) 362 4599
✉ rotorua.gm@vrhotels.co.nz



ROTORUA FAMILY HOLIDAY PARK

Our friendly holiday park is situated in a quiet location with no sulphur odour, a short drive to central Rotorua.

In our park-like grounds we offer various types of accommodation to suit our guest's requirements. Our facilities include children's playground, swimming pool (seasonal), spa pool, BBQ cooking and dining area, 9kg gas bottle exchange, tackle shop, TV room,

dump station & full camping facilities. Only 3 minutes drive to Skyline, Rainbow Springs, OGO, Rotorua Canopy Tours, Agroventures, and Agrodome. A short walk to the Ngongotaha shops, Lake Rotorua and world famous Ngongotaha trout fishing stream.

📍 22 Beaumont Rd, Rotorua
☎ (07) 357 4289 or 0800 574 289
✉ stay@rotoruafamilypark.co.nz
🌐 rotoruafamilypark.co.nz





SKYLINE ROTORUA'S NEW VENUE OFFERS HIGH-END DINING WITH SPECTACULAR VIEWS

Book your next event at Skyline Rotorua's fine-dining venue - dine@VH - or the stunning Hidden Forest venue, where high-end cuisine is enhanced by award-winning wine and spectacular panoramic views over Lake Rotorua and its city.

SIMPLY STUNNING DINE@VH

Whether it's an engagement party, milestone birthday or corporate event, dine@VH is the perfect location for groups to enjoy a special night, with sweeping views of the city's lights twinkling below. Let your guests savour a five-course à la carte menu, crafted by chefs working in partnership with local farmers and growers, sharing a commitment to food excellence, fresh produce and exquisite flavours.

Located atop Mount Ngongotahā at Volcanic Hills Winery and Tasting Room, each course is matched with award-winning Volcanic Hills wine sourced from the best of New Zealand's premium wine-growing regions of Marlborough, Hawkes Bay, Central Otago and Martinborough. With spectacular panoramic views over Lake Rotorua and its surrounding city, incredible service rounds out a dining experience that lingers on in your heart long after the cheese and port have finished.

Available seven days a week for pre-booked groups.

Minimum 10 pax | Maximum 30 pax.

HIDDEN FOREST VENUE

Looking for a something to impress larger groups? Skyline Rotorua's Hidden Forest Venue will add an unforgettable dimension to your next conference or special event. Surrounded by towering redwood trees and native birdlife, your VIP guests will experience the 'wow' factor.

Nestled into the forest, you'll discover a purpose-built marquee with the capacity to cater for up to 120 guests. The lushly planted native grove entrance brings the magic of the forest floor into the dining space.

Fresh from the marquee's open-plan kitchen, grazing platters stretch the length of the tables. Choose from artisan breads, antipasto, cured meats, slow cooked beef, Akaroa salmon and superb vegetables and salad – all complemented with Volcanic Hills wine and NZ beers.

Choose to ride the sweeping bends of the scenic luge track to the Hidden Forest Venue, by chairlift or arrive via a complimentary shuttle.



📍 178 Fairy Springs Rd, Rotorua
☎ (07) 347 0027

✉ rotorua@skyline.co.nz
🌐 skyline.co.nz/rotorua





CUISINE AND STARGAZING A DAZZLING COMBINATION

Make a night of it at Skyline Rotorua – tantalise your taste buds with award-winning cuisine at Stratosfare Restaurant and Bar before immersing yourself in the magic of the night sky at the Stargazing observatory.

SEASONAL DELIGHTS

Let the stunning views of Rotorua at dusk set the scene for the evening ahead as you ascend to Stratosfare by Gondola.

Start the evening with a signature cocktail before admiring the lavish sight of Stratosfare's magnificent buffet stretching the length of the restaurant. Inspired by iconic kiwi cuisine infused with international influences, Stratosfare's head chef has been cooking up a storm designing a new menu, all featuring locally sourced fresh seafood, meat and produce.

New to the menu are dumplings, paella and roasted pork belly as well as a simply mouth-watering rack of New Zealand grass-fed lamb and whole lobster tail grilled with tarragon and garlic butter.

Open every day for lunch from 11.30am and dinner from 5.30pm.

STEP INTO A DIFFERENT UNIVERSE

Observing the stars while dining is one thing, viewing them up close and personal is really something else. With the assistance of your Stargazing

guide to navigate the night sky, you'll learn to use precision telescopes. View breath-taking galactic sights, such as the iconic Southern Cross, nebulas, planets, the Milk Way and other galaxies.

CLOUDY NIGHT STARGAZING

There are nights when cloud cover means stargazing is best done indoors. Welcome to the comfort of Skyline's impressive cedar wood observatory.

Snuggle up with a hot chocolate and let the knowledgeable hosts guide you through the night sky via a multimedia presentation, sharing everything from the fundamentals of astronomy and astonishing facts about outer space, to traditional narratives from our Māori ancestors.

Experience full-colour satellite images of deep space, and photography and moving pictures of some of Rotorua's iconic attractions against the night sky. Simply stunning.

BOOKINGS ESSENTIAL

The 60-minute stargazing tour departs nightly after dark, throughout the year. Session times depend on sunset times so visit skyline.co.nz/rotorua to book.





**15 craft beers
and ciders
on tap**



**Mon-Fri
3:30pm - 6:00pm**
(excludes holidays)

Live Music
Every Weekend
Large Groups Welcome
Easy Parking



Corner Tutanekai
& Haupapa Streets,
Rotorua, New Zealand
Ph 07 347 3025
pigandwhistle.co.nz

GARDEN BAR

HISTORIC BUILDING

**open
for dinner
7 days**



open 7:00am - 9:00pm, 7 days

1181 Eruera Street, Rotorua, New Zealand
Ph +64 7 348 8818 • www.capers.co.nz • [f CapersEpicurean](https://www.facebook.com/CapersEpicurean)



C A P E R S



urbano *bistro*



BREAKFAST & LUNCH
Mon to Sun, 9am – 3pm

BAR SNACKS Mon to Sun, all day

DINNER Mon to Sat, 5.30 – 11pm

SMART CASUAL CAFE BY DAY

- ✓ Serving breakfast, lunch and bar snacks
- ✓ Fresh baked muffins, slices, cakes and biscuits
- ✓ Ozone Coffee – dine in or takeaway

BISTRO DINING BY NIGHT

- ✓ Serving modern, innovative contemporary cuisine

- ✓ Free Motel Delivery
- ✓ Menus available online
- ✓ Reservations recommended

**VOTED ROTORUA'S MOST OUTSTANDING
RESTAURANT FOR 2013 AND 2016
FINALISTS IN 2014, 2015, 2017 & 2018**

LIME CAFFETERIA

Cnr Fenton & Whakaue Sts, Rotorua | P 07 350 2033

Open 7.30am to 4.30pm | 7 days a week

A bright and lively cafe with **cabinet food**, **specials board**, and a **breakfast** and **lunch** menu that includes delicious temptations full of fresh flavours like Peach Melba Waffles, Spicy Boston Beans, and Thai Risotto.

With **communal tables**, **extensive outdoor seating** bathed in the summer sun and also taking out the **'2016 Outstanding Cafe'** award, Lime provides a **friendly atmosphere** with good old fashioned table service!



ROTORUA
NIGHT MARKET

Third Place Café



**2017 & 2018 Best Cafe Winner
Rotorua Hospitality Awards**

*All day menu
Free parking
Outdoor dining
Award winning coffee
Group bookings
Kids play area
Breakfast
Lunch*



35 Lake Rd, Ohinemutu, Rotorua
Phone 07 349 4852
thirdplacecafe.co.nz

OPEN 7 DAYS

Mon - Fri 7:30am - 4:00pm
Sat & Sun 7:30am - 3:30pm



THE COFFEE CLUB REDWOOD CENTRE

A wide range of breakfast & lunch meals, snacks, kids' meals, irresistible desserts & of course excellent coffee right by the famous natural treasure The Redwoods - Whakarewarewa Forest, which also makes an appearance in store!

Cnr Te Ngae & Tarawera Roads
Lynmore, Rotorua
(Beside Te Ngae Medical Centre)
Ph: 07 562 4846

THE
COFFEE
CLUB



OPPIES - CHIP CHAMPION

Oppies, open every day from 11am to 10pm.
Quick delicious takeaways. Easy to find, on the
corner of Fenton Street and Malfroy Road.

Now completely refurbished
into takeaway and restaurant.
Home of award winning
fish & chips and Chinese
takeaway food.

Oppies has won NZ awards
for tastier and healthier

fish and chips cooked to
perfection in bran oil.
Takeaway and restaurant.
New parking area off Malfroy
St for your convenience

Plenty of choice, a large menu
with authentic Chinese dishes.

📍 Cnr Fenton & Malfroy Rd, Rotorua
☎ (07) 347 1909
🌐 oppies.co.nz



EAT STREET

WHAT YOU DON'T KNOW ABOUT DIGITAL MARKETING WE DO

Google
Partner



What **you know**
you know

WE KNOW DESIGN, WEB & MARKETING

ninetyblack.com
PH 0800 90 BLACK THE DESIGN, WEB AND MARKETING CO.

VALUING ROTORUA'S LAKESIDE LIFESTYLE

Buying your own slice of "Famously Rotorua"? Then call Adrienne Mikkelsen. She's an expert at valuing all of the city's residential, lifestyle and lakes properties, permanent living or holiday homes.

Anyone buying into today's increasingly vibrant Rotorua scene needs a local expert offering local advice. Adrienne should top that list. She's Property InDepth's Bay of Plenty manager and a fully registered property valuer. She isn't a real estate agent. She doesn't sell properties. Instead, she provides buyers and sellers independent property valuations on the full range of residential, investment, lifestyle and lake properties spread throughout the Rotorua District, the Bay of Plenty and Taupo.

Many of Property InDepth's happy clients comment on how "professional, obliging and good to deal with" Adrienne is and how she's given them "first-class service". That's not

surprising. She's a real people-person and thoroughly enjoys helping anyone achieve their property goals.

Since she began her valuation career in Rotorua in 1997, Adrienne has had her finger on the pulse of Rotorua's property scene. She joined Property InDepth in 2009 and is one of the many valuers it has working throughout New Zealand.



☎ 0800 463 378 or (021) 776 303

✉ enquiry@propertyindepth.co.nz

🌐 propertyindepth.co.nz



Your after hours
ONE STOP SHOP



OPEN EVERY DAY
OF THE YEAR
8.30AM TILL
9.30PM



PRESCRIPTIONS,
FIRST AID
AND ALL YOUR
MEDICAL NEEDS



ROTORUA MUD
AND NZ MADE
SKINCARE
PRODUCTS



1155 Tutanekai St • Rotorua • www.lakescarepharmacy.com • Ph 07 348 4385



**on holiday...
feeling unwell?
injured yourself?**



Lakes PrimeCare is here to help.

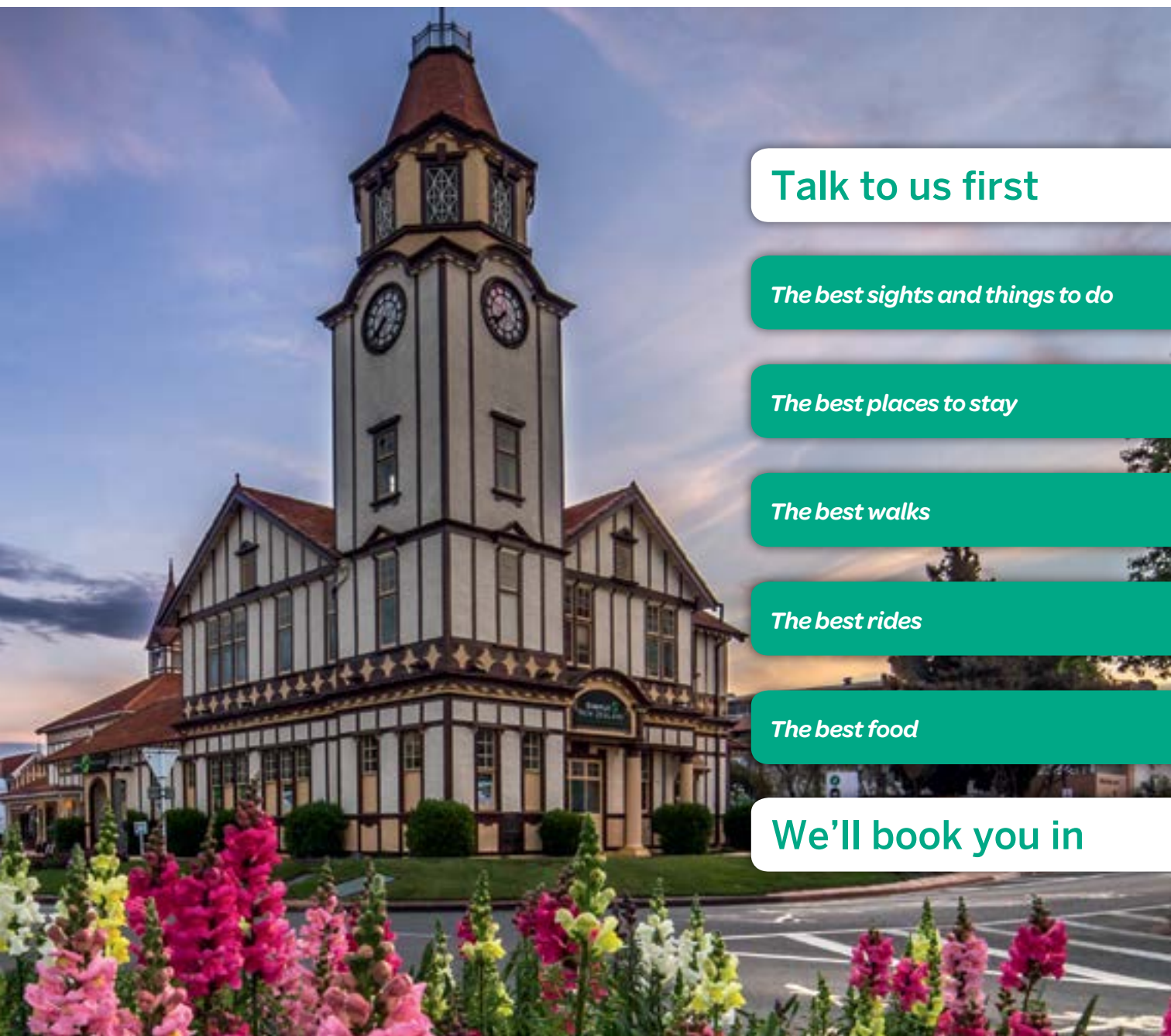
We are a walk-in clinic, no appointment necessary.

OPEN EVERY DAY – 8am to 9:30pm

Ph. (07) 348 1000

1165 Tutanekai Street, Rotorua

i-SITE is Rotorua's official information and booking centre, and we are open 7 days



Talk to us first

The best sights and things to do

The best places to stay

The best walks

The best rides

The best food

We'll book you in

RotoruaNZ.com

A Corner Fenton & Arawa
Streets, Rotorua
T 07 348 5179
E info@rotoruaNZ.com

Where the
flavours of **earth** 
meet **fire** 

