

ROTORUA



YOUR GUIDE TO THE RELAXATION CAPITAL OF AOTEAROA

SPECIAL EDITION
AUTUMN / WINTER 2025

GO ON A ROBE TRIP TO ROTORUA

CENTURIES-OLD HEALING IN ROTORUA

SNUGGLE UP IN ROTORUA

**WARNING:
THIS MAGAZINE
IS BEST ENJOYED
WHILE WEARING
A ROBE.**

KIA ORA AOTEAROA

Is it time you went on a *ROBE* trip?

As the spa and wellness capital of Aotearoa New Zealand, Rotorua is the ultimate place to relax – the perfect place for a Robe Trip – so we encourage you to slip into your favourite plush, fluffy robe and experience our rohe's world-class spa and wellness offerings, from natural hot pools to luxury spa treatments designed to melt stress away.

Rotorua has long been a place of relaxation and rejuvenation, where nature and culture combine to create an experience unlike any other. In this special edition, we celebrate Rotorua as the perfect destination for a getaway that offers you, our manuhiri, the chance to unwind, reconnect, and indulge in the region's unique geothermal wonders.

Since the 14th century, mana whenua have understood the power of Rotorua's mineral-rich waters. The natural healing hot pools, shaped by the earth's restless energy, are found throughout the region, offering a soothing sanctuary where you can soak, reset, and feel the benefits of these geothermal marvels. Beyond the hot pools, the landscape itself is a spectacle; steaming valleys, silica terraces, and bubbling mud pools make Rotorua one of the most vibrant and colourful places in Aotearoa.

A restful escape wouldn't be complete without the perfect place to stay, and this edition showcases a couple of our most secluded accommodation options, where you'll instantly swap city noise for birdsong and wake up to the serenity of nature. Of course, no getaway is complete without exceptional food, and we've included a foodie feature highlighting everything from nature-inspired cafés to fine dining experiences, plus a fresh take on a Kiwi favourite, upmarket fish and chips with flair.

If city life has you feeling tired and stressed out – robe up and reset. Spend a plush long weekend with your partner in Rotorua. Book your Robe Trip today at RotoruaNZ.com.

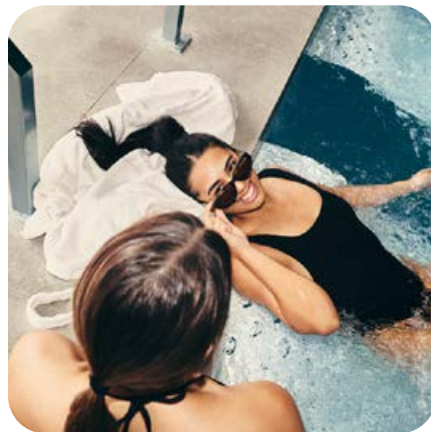
- 2** Go on a Robe Trip to Rotorua
- 4** A foodie's guide to Rotorua's must-visit eateries
- 8** Centuries-old healing in Rotorua
- 12** Snuggle up in Rotorua

GO ON A ROBE TRIP TO ROTORUA.[®]

It's hard to have a bad time in a fluffy white bathrobe. And Rotorua has robe-based activities in abundance. From spas, facials and massages to wining, dining and unwinding – this is the Robe Capital of Aotearoa.

So if city life has got you feeling tired and stressed out – robe up, and reset. Spend a plush long weekend with your partner in relaxing Rotorua.

Book your Robe Trip today at RotoruaNZ.com





This is not a paid advertisement for Moët Hennessy.

A FOODIE'S GUIDE TO ROTORUA'S MUST-VISIT EATERIES

From wood-fired brunches to boutique bakeries and degustation menus, these local gems serve up something special, perfect for sweet treats or a date with your sweetheart.





Eastwood Café, photo Neat Places



Patrick's Boutique Bakery, photo Neat Places



The Regent Room, photo Neat Places

THE MAIN(S) EVENT OF THE REGENT ROOM

For a dining experience that feels like a royal affair, look no further than The Regent Room located in the heart of the city. This chic spot is open every day, serving up delicious breakfasts, lunches, and dinners, along with tempting tapas, degustation menus, sophisticated cocktails, and high teas for those special occasions, no matter how big or small.

The Regent Room is a visual delight. Playful studded rhino heads add a whimsical touch to the jet-black chandeliers and furnishings. When evening falls, the tables dressed in crisp white linens elegantly overlook the outdoor swimming pool and charming courtyard. Through the cooler months, the indoor-outdoor fire provides another layer of warmth and cosiness.

Executive chef Alan Haslem is the master behind the food. Hailing from Ireland, it was love at first sight for Alan when he laid eyes on Rotorua's stunning lakefront. Captivated by the beauty, he decided to make Rotorua his home. This heartfelt connection to the local landscape and culture is evident in every dish he creates, as he turns fresh, local ingredients into culinary works of art.

SCENIC BITES AT EASTWOOD CAFÉ

Located at Scion Research Centre, Eastwood Café boasts one of the most picturesque settings alongside Whakarewarewa Forest. Dine alfresco if the weather is fine or grab one of the tables indoors where the beauty of wood is the star of the space, with the minimalist design and exposed wooden beams a nod to Scion's forestry connections.

Eastwood specialises in wood-fired pizzas but is also a brunch lover's dream (it's offered daily!). The hearty Green Bowl is heaped with seasonal greens, squeaky-salty halloumi, za'atar avocado and a runny poached egg, and the Turkish Eggs are a spicy-savoury indulgence. There's also a range of picture-perfect brunch cocktails to accompany your meal, including two frozen flavours of frozen margaritas.

SWEET TREATS AT PATRICK'S BOUTIQUE BAKERY

Patrick's Boutique Bakery is a hidden gem in Rotorua, perfect for anyone with a sweet tooth or an appreciation for artisanal baking. From the moment you step inside, you can feel the passion Patrick brings to his craft – a passion built over 40 years locally and abroad.

What sets Patrick's apart is the unwavering commitment to quality. Everything, from the filled rolls, flaky pies, or pastries of the day, is made on site from scratch, using top-notch ingredients, with a focus on traditional techniques. The "Boutique" in the name isn't just for show, it reflects the care and skill that goes into every product, from the crisp layers of his croissants to the silky smooth custards in his tarts.

Signature items like the chocolate eclairs, almond croissants, lemon meringue pies, and mille-feuille keep regulars coming back, while his Black Forest gateau and vanilla bean cheese tart are crowd favourites. With an open-plan kitchen, customers can watch the magic unfold, making the experience as authentic as the pastries themselves.

A QUICK BITE AT RIVER'S CATCH

At River's Catch, you're not just grabbing dinner on the go, you're getting a feel-good experience crafted with care. An upmarket fish and chip shop, River's Catch specialises in sustainable, seasonal, and downright delicious comfort food with a twist: genuine Filipino flavours subtly infused throughout the menu, showcasing owners Izzy and Norman's heritage, while still catering to the local scene.

Their signature Tackle Box includes fish and chips with Asian slaw and miso dressing, and homemade sauce for a unique flavour punch. Other popular items are the Adobo fish tacos (grilled or fried) and the double-patty smash burgers – juicy, tasty, and flying out the door.

River's Catch is not just a takeaway. It's a space where every bite feels personal, and every customer leaves with more than just a full belly – they leave with a bit of aroha.

Whether you're after a laid-back brunch, a quick bite, or a night of shared plates and fine wine, Rotorua's vibrant dining scene has something for every occasion. With warm, inviting spaces and dishes designed to delight, these eateries are perfect. ❖




GO ON A ROBE TRIP TO ROTORUA.^{RT}



Spend a plush long weekend with your partner.
Book your Robe Trip today at RotoruaNZ.com





CENTURIES-OLD HEALING IN ROTORUA

The region's landscapes provide an unparalleled setting to unwind, rejuvenate, and rediscover yourself.

Being nestled in the heart of the North Island means Rotorua sits within an ancient volcanic caldera – a cauldron-like depression formed by a massive eruption approximately 240,000 years ago. This dramatic geological event shaped the region's stunning landscape, leaving behind otherworldly geothermal features that serve as both a visual spectacle and a source of relaxation and healing.

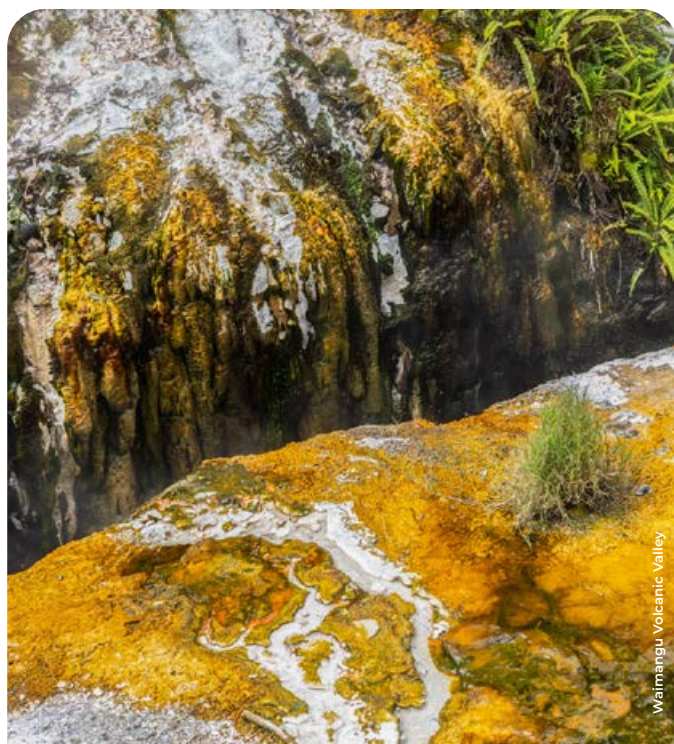
Long before Rotorua or New Zealand became a global wellness destination, the Māori who discovered this area immediately recognised the benefits the geothermal activity would provide. They incorporated this taonga, or treasure, from Papatūānuku (Earth Mother) into their daily lives: the naturally heated waters and

steam vents provided warmth, cooking sources, and healing baths, while the geothermal energy supported communal living and wellbeing. Today, the deep cultural connection continues to enrich Rotorua's identity and culture, and many homes and families, including those living in Whakarewarewa Living Māori Village still utilise this taonga.

Beyond the physical benefits, Rotorua's geothermal features invite a holistic approach to wellness. Spending time in the geothermal reserves as well as places like Whakarewarewa Forest, Hamurana Springs, and other natural areas offer the perfect balance of relaxation and connection to nature when paired with a soothing soak in mineral-rich hot pools.



Whakarewarewa - The Living Maori Village



Waimangu Volcanic Valley



Whakarewarewa - The Living Maori Village

This incredible landscape has, over the decades, led to the creation of a variety of wellness retreats that allow visitors to immerse themselves in its natural powers. Polynesian Spa was Rotorua's first dedicated, commercial hot pools facility, and Wai Ariki Hot Springs and Spa is the newest, having opened in 2023.

At both locations, guests are invited to soak in natural, spring-fed alkaline and acidic hot pools while enjoying beautiful, calming views of Lake Rotorua and Mokoia Island – and starry skies if you visit at night. Polynesian Spa and Wai Ariki also offer world-class spa treatments to pair with hot pools experiences, with Wai Ariki blending modern and Māori healing traditions in a space designed to honour the cultural significance of the land.

Another standout geothermal gem in Rotorua is Hell's Gate, where guests can indulge in sulphurous waters and New Zealand's only mud baths which Māori used for centuries to treat joint pain and skin conditions. Guided and unguided tours of this amazing geothermal reserve present cooking pools, steaming cliffs, and the largest hot waterfall in the Southern Hemisphere.

Witness the mud volcano eruptions and land coral which grows day by day, and you'll see firsthand how this place got its name.

Waikite Valley Hotpools is another sanctuary for nature lovers. Prior to soaking in the various hot pools, follow the short but beautiful Eco-Trail to see Te Manaroa Spring, New Zealand's largest single source of boiling water, naturally bubbling away at 99 degrees Celsius (210 degrees Fahrenheit)! This unique feature provides the perfect environment for microorganisms, prehistoric mosses, and a species of fern that has a fascinating story.

Explorers also love Manupirua Hot Pools as getting there is half the fun. These hot pools along the shore of Lake Rotoiti are accessible only by water taxi, jet boat or float plane. Overheating a bit in the pools? Follow the locals' methods for cooling off by doing a "Manu" (bomb) off the jetty into the lake.

Rotorua's geothermal wonders are more than just a visual delight – they are an invitation to experience the restorative power of Earth. Whether you seek relief from daily stresses, healing for body and soul, or simply a peaceful escape, Rotorua offers a destination where nature and wellness converge. Make Rotorua your next wellness retreat and let its geothermal treasures work their magic on you. ❖



Whakarewareware - The Living Māori Village



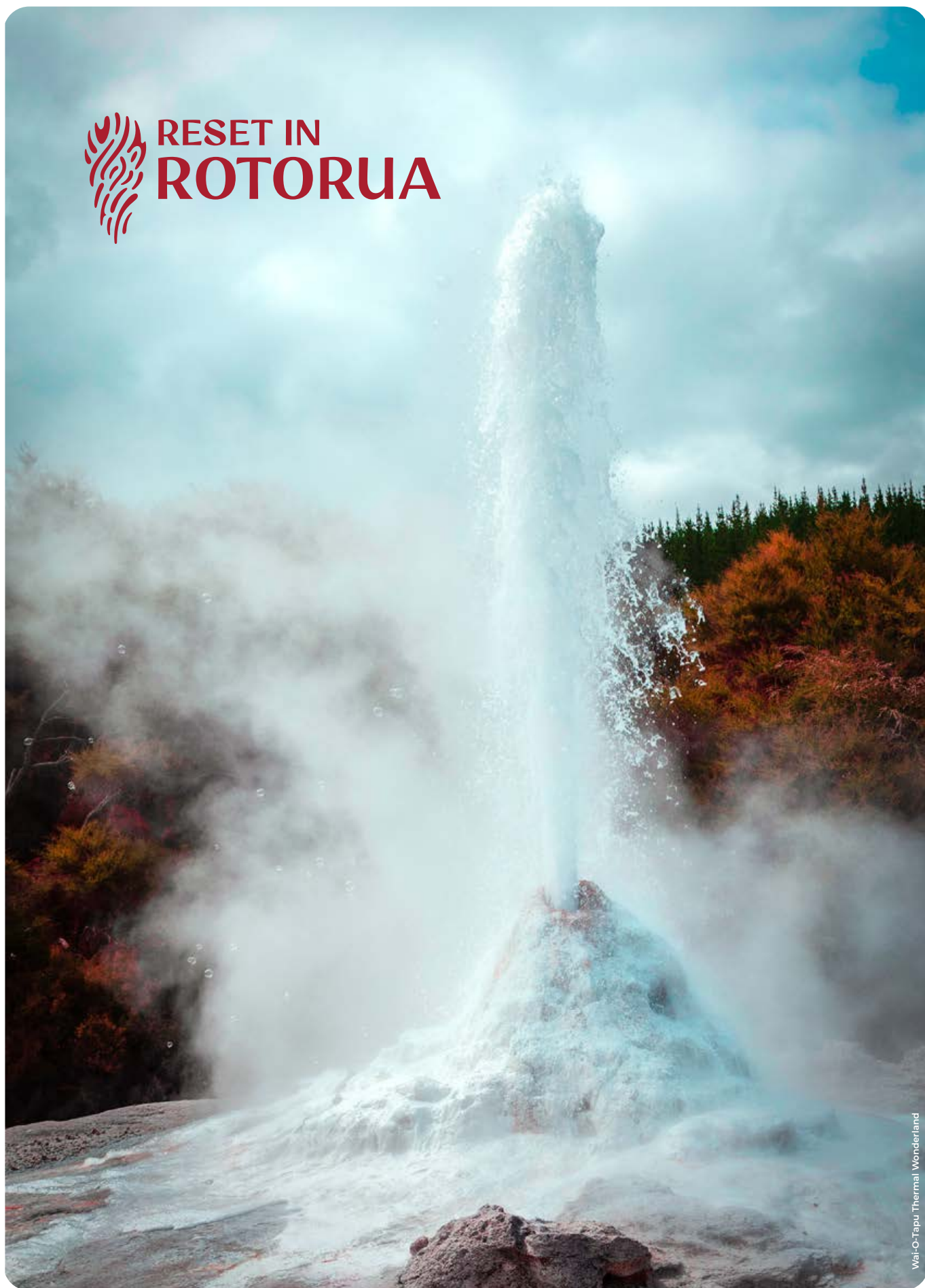
Hell's Gate, photo Adrian Hodge



Polynesian Spa



RESET IN ROTORUA





SNUGGLE UP IN ROTORUA

Rotorua is the perfect destination for every season, but especially when cosy accommodation options abound.

With cooler weather closing in, and our tendency to spend more time indoors, a midyear retreat to the historic Lake Tarawera area is just the ticket for avoiding the winter blues. Welcome to Rotorua, where warm, welcoming and unique accommodation options become your cocoon/sanctuary.

So, make yourself a cuppa and let us tell you about a few amazing spots for couples seeking a haven of rustic charm and breathtaking scenery in a secluded location.

A COSY LAKESIDE HAVEN

Perched above the shores of Lake Tarawera, Jack's Hut is a picture-perfect hideaway for couples craving privacy, warmth and charm. This lovingly restored shepherd's hut combines rustic simplicity with modern comforts, creating a snug retreat that's perfect for slowing down and reconnecting. The highlight? A wood-fired outdoor bathtub, where you can soak under the stars while gazing at the serene lake. Inside the hut, the space is warm and inviting, with a crackling fireplace, plush bedding, and thoughtful touches that make it feel like home.



Tarawera Tipi



Jack's Hut

Mornings at Jack's Hut begin with coffee on the deck, where you can watch the mist rise over the lake as native birds sing their morning chorus. Days can be spent exploring the lake by kayak, hiking to natural hot springs, or simply lounging with a book in hand. As the sun sets, light up the outdoor fire pit and enjoy a glass of wine while the sky transforms into a canvas of pinks and oranges.

GLAMPING WITH A VIEW

For those seeking something truly unique, Tarawera Tipi offers a luxurious glamping experience with unparalleled views of Mt Tarawera and easy access to the lake. This spacious canvas tent is beautifully furnished with a plush king-sized bed, ambient lighting, and cosy textiles that add a touch of romance to the wilderness. With no Wi-Fi or other technological distractions, it's an ideal place to truly disconnect and immerse yourself in nature.

The tipi's private outdoor space is where the magic happens. A fire pit invites late-night storytelling, while the open-air bath lets you soak in mineral-rich waters while gazing at the star-studded sky. Wake up to the crisp mountain air, sip your morning coffee from the comfort of your bed, and watch as the morning sun bathes this special maunga in golden hues. ❖



Tarawera Tipi



Jack's Hut



SKYLINE GONDOLA AND LUGE CELEBRATES 40 YEARS OF FUN

Skyline Rotorua offers an unforgettable adventure that begins with a peaceful Gondola ride up the stunning Mt Ngongotahā, where you'll be treated to breathtaking views of the captivating Lake Rotorua below.

Skyline Rotorua, just a 5-minute drive from central Rotorua, offers stunning views of this geothermal wonderland. Open year-round, our attractions cater to all ages, making it the perfect destination for family fun, rain or shine.

Experience the world-famous Rotorua Luge, a must-visit since 1985. Part go-cart, part toboggan, these three-wheeled, gravity-powered carts let you navigate one of five thrilling tracks—Tiki Tour, Gravity, Legend, Ultra, and Twister. Spanning 7.3 kilometres through Redwood forest, the tracks offer breathtaking views of Lake Rotorua. Riders control their speed and direction with a unique braking and steering system, making it an adventure for all ages. Young children can even join in alongside adults, and a scenic chairlift ensures an effortless ride back to the top.

For adventure seekers, try the exhilarating Luge or explore our Mountain Biking Park, designed for an adrenaline-packed journey through Rotorua's landscapes. The excitement doesn't stop there—experience the Hyfly Dual Zipline and the gravity-defying Skyswing,

or enjoy a peaceful nature walk with interactive panels showcasing the area's unique flora and fauna.

When it's time to refuel, visit the Market Kitchen Café for casual bites or enjoy an exquisite buffet at Stratosfare Restaurant & Bar. Wine lovers can sample New Zealand's finest at the Volcanic Hills Wine Tasting Room, while kids will love the whimsical Jelly Belly Gallery and Store.

As Skyline Rotorua celebrates 40 years of adventure, we invite Kiwis to share their cherished memories for a chance to win exciting prizes! Book your ticket today and be part of an extraordinary holiday experience.

Visit rotorua.skyline.co.nz for details.



📍 178 Fairy Springs Road, Rotorua
☎ (07) 347 0027

✉ rotorua@skyline.co.nz
🌐 rotorua.skyline.co.nz
📱 [skylinerotorua](https://www.facebook.com/skylinerotorua)
📺 [skylinerotorua](https://www.instagram.com/skylinerotorua)



Skyline Rotorua, NZ

40

Years of Fun

**Celebrating
40 Years
of Fun**



rotorua.skyline.co.nz



WAIMANGU VOLCANIC VALLEY

Pack up the family and experience an educational and unforgettable day exploring Waimangu Volcanic Valley – covered in regenerating native forest and fascinating flora, spectacular geothermal features and distinctive birdlife, Waimangu provides entertainment for the whole family.

RICH IN HISTORY

Waimangu's history and legacy lends itself to plenty of rich experiences and stories for the whole family. The area was created following the Mount Tarawera eruption in 1886 – which devastated the area and destroyed what was known as the 'Eighth Wonder of the World', the Pink and White Terraces.

HANDS-ON EXPLORING

Let the kids get hands-on exploring the valley including discovering the temperature of some of Waimangu's amazing geothermal features using one of the digital 'temperature gun' thermometers.

Other highlights include Frying Pan Lake – one of the world's largest hot water springs with a surface area of 3.8ha – and the picturesque Inferno Crater Lake which rises and falls as it heats and cools.

AUGMENTED REALITY

The wonders of Inferno Crater Lake's 38-day cycle can also be uncovered through Waimangu's augmented reality (AR) app.





The app brings to life many of the Valley's fascinating geological insights, like the now-extinct Waimangu Geyser, which regularly erupted in the valley between 1900 and 1904 to heights of over 400m!

Enjoy a boat cruise on Lake Rotomahana – now covering the famous Pink and White Terraces – and let the wonders of AR technology restore the sights that once brought so many intrepid travellers to the shores of the lake, and spark kids' imaginations about the mystery of the terraces' fate.

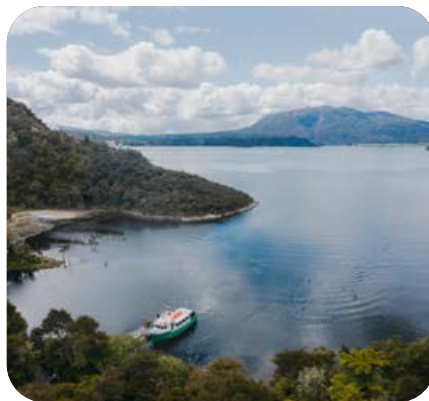
Waimangu's AR app is free to download on Apple and Android devices. Locations of interest are geo-tagged, allowing visitors to enjoy the natural beauty of Waimangu until there is something hidden to be seen with AR.

LOCAL STORE & CAFÉ

If you're looking for a caffeine fix, look no further! The Waimangu Local Store and Café has the best coffee around and a lovely, relaxing environment with great views to enjoy it in! Choose from hot and cold breakfasts, hearty lunches, Kiwi classics and perfect picnic options if you are heading out into the valley.

Pick up some essential items from the general store while you are here or check out our range of specialty food and drink, gifts and clothing made in Rotorua and around New Zealand.

Open 8:30am. Last admission 3:30pm.



📍 587 Waimangu Road, Rotorua
☎ (07) 366 6137

✉ nature@waimangu.co.nz
🌐 waimangu.co.nz
📱 waimanguvolcanicvalley
📷 waimanguvolcanicvalley





TE PUIA – PĀTAKA KAI RESTAURANT & BAR

Perched above the stunning Te Whakarewarewa geothermal valley, Pātaka Kai Restaurant & Bar offers a dining experience like no other—a fusion of Māori-inspired cuisine and breathtaking natural beauty provides the ultimate dining experience.

Pair your dining experience with a day or evening at Te Puia, where you can join a guided experience and see explore powerful geysers, the kiwi bird, the New Zealand Māori Arts and Crafts Institute and authentic Māori cultural performances.

At Pātaka Kai, whether you choose to sit on our open-air balcony or indoors behind floor-to-ceiling glass windows, every meal is served with an awe-inspiring backdrop of steaming geysers and geothermal wonders.

We celebrate the rich flavours of Aotearoa, bringing together fresh, locally sourced produce to create dishes that tantalise the taste buds. From traditional steamed puddings to an array of kai moana (seafood), our carefully curated menu ensures an unforgettable feast that caters to every palate.

Pair an inu with your kai from our fully-licensed bar, offering a selection of local craft beers from Croucher Brewing and local wines from Volcanic Hills and New Zealand brands Hāhā, Kono, and Tohu.

A favourite among Rotorua locals, Pātaka Kai is the perfect venue for celebrating special occasions—birthdays, anniversaries, work events, or intimate gatherings—all set against a backdrop of cultural richness and natural beauty.

HĀNGĪ BUFFET LUNCH

Indulge in our Hāngī Buffet Lunch, served daily from 11:30am, where the flavours of Māori tradition meet international culinary influences. Begin your meal with a warming bowl of corn & watercress soup, paired with fresh, house-made rēwena bread. Then, delight in a main course featuring mānuka-smoked ham, pork rib boil-up, the signature Pātaka Kai buttermilk fried chicken, and hāngī-style chicken and lamb with rēwena bread stuffing. A vibrant salad bar complements the selection, while our dessert offerings satisfy every sweet tooth with classic Kiwi flavours.

HĀNGĪ DINNER BUFFET

As the sun sets over Te Whakarewarewa geothermal valley, experience an atmosphere like no other—where steam meets the warm glow of twilight. From 5:30pm, our Hāngī Dinner Buffet takes guests on a culinary journey filled with bold flavours and timeless traditions. Enjoy a diverse selection of mouthwatering mains, including tender hāngī-cooked lamb, chicken, and vegetables with rēwena bread stuffing, as well as an indulgent



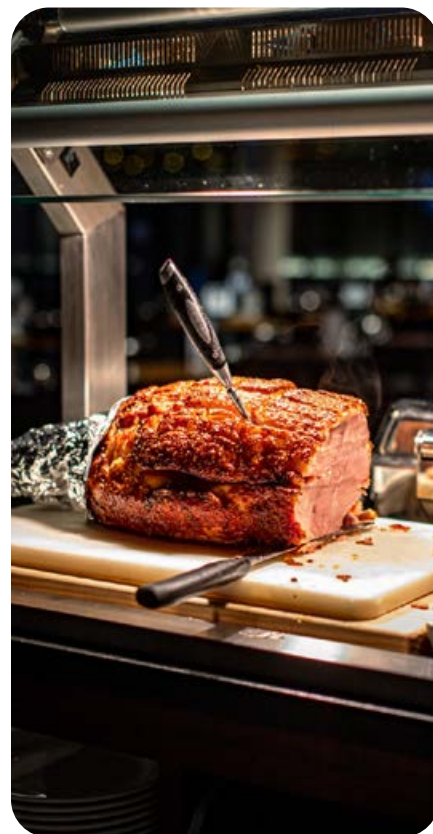
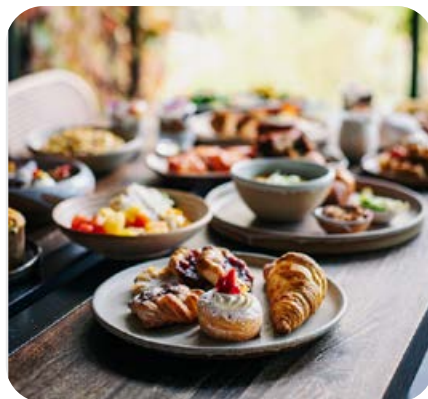


kai moana (seafood) selection featuring chilled oysters, marinated raw fish, steamed half-shell mussels, and mānuka-smoked king salmon. End the evening with our delectable dessert buffet, showcasing crème brûlée, traditional steamed pudding, classic Kiwi pavlova, and our new soft-serve machine featuring kawakawa-infused ice cream.

SUNDAY BRUNCH

Sunday Brunch at Pātaka Kai over the cooler months is an experience not to be missed, and reopens for bookings from 13th April – 28th September. Our menu includes freshly baked breakfast pastries, waffles, twice-cooked sticky glazed pork ribs, and there's even a Malaysian prawn laksa station with dumplings. For lovers of classic brunch staples, enjoy grilled maple bacon and eggs, or experience a uniquely Māori twist with creamy mushrooms seasoned with horopito.

Nau mai, haere mai—We look forward to welcoming you!



📍 Hemo Road, Rotorua
☎️ (07) 348 9047 or 0800 TE PUIA

✉️ reservations@tepuia.com
🌐 tepuia.com
📱 tepuia.rotorua.nz
📷 [te_puia](https://www.instagram.com/te_puia)





REDWOODS TREEWALK & ALTITUDE

The heart of Rotorua is found in the Redwoods, where nature can be experienced in the daytime and magic comes to life at night. No visit to Rotorua is complete without experiencing the Redwoods. This is a Rotorua Must Do.

Here are three ways to enjoy the forest...

REDWOODS TREEWALK

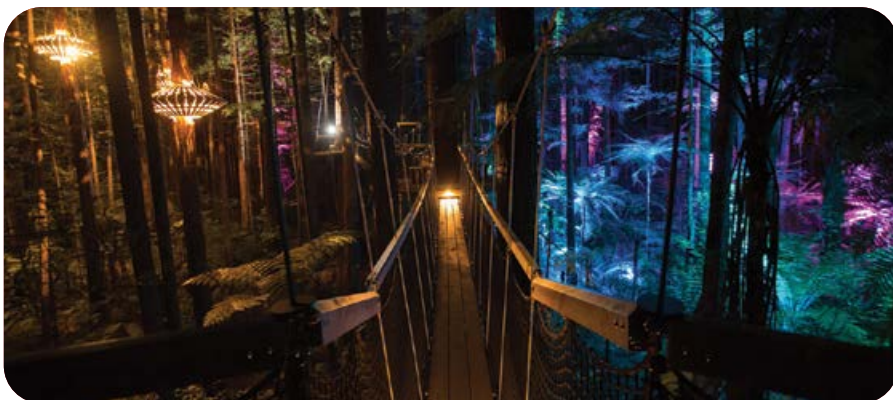
Now synonymous with Rotorua, the Treewalk is not to be missed. The award-winning eco-tourism walk is 700-metres long, featuring 28 suspension bridges and viewing platforms.

Making its way through the canopy, Treewalk is the best way to forest bathe, and take in the 120-year-old Redwood grove where some of nature's magic happens... the trees here grow up to ten times faster than in other parts of the world, producing gentle giants that host unique fauna and flora.

Perfect for couples and families to take in Rotorua's most beloved treasure, where design meets nature.

REDWOODS NIGHTLIGHTS

Under the cover of darkness magic happens. New Zealand's most popular evening tour just got better, with the addition of the new Trubridge walk-in lantern. The 34 lanterns turn Rotorua's beloved Redwoods into New Zealand's real-life enchanted forest. Unique and intricate lighting brings the forest to life and makes a visit truly stunning no matter the weather.





Young and old fall under the spell of this amazing forest, that locals cherish as a place to renew, refresh, and recharge.

REDWOODS ALTITUDE

Experience even more of the spectacular Redwoods Forest!

Looking for something a little more exhilarating? Redwoods Altitude is a separate offering from the main Treewalk and offers a guided experience, up to 25 metres high – higher than the existing Treewalk.

When Treewalk enthusiasts said build higher, make it faster, Redwoods Altitude seemed to magically appear. This fully guided Indiana Jones-style inspired journey takes visitors to the forefront of adventure. Small, guided tours are taken through a series of 25 themed swing bridges and three flying foxes, as they zip, jump, and balance their way through what might just be an impossible mission.

With daily scheduled departures, it is exactly what you'd expect the reboot of Treewalk as a movie to feel like. Allow 2.5 hours for this epic adventure, located only 5 minutes from

the Rotorua CBD, this thrill will not let you down. Book the ultimate tree top adventure in Rotorua today!

Check out our website for more info - www.treewalk.co.nz

Treewalk open daily from 9am.

Altitude departures daily.
Book your Altitude adventure at www.redwoodsaltitude.co.nz



📍 Titokorangi Drive, Whakarewarewa, Rotorua

✉ info@treewalk.co.nz
🌐 treewalk.co.nz
📱 [redwoodstreewalk](https://www.facebook.com/redwoodstreewalk)
📷 [treewalknz](https://www.instagram.com/treewalknz)





HELL'S GATE GEOTHERMAL RESERVE AND MUD SPA

Witness a land born of myth and legend, where Rūaumoko heats the Earth from a world below, boiling mud and billowing steam into the air above. Journey through native bush that opens up into geothermal landscapes, and bathe in mud and sulphur pools that revitalise the mind, body and soul.

UNCOVER THE WONDERS OF GEOTHERMAL

Located on the outskirts of Rotorua lies the awe-inspiring geothermal reserve best known today as Hell's Gate.

Steeped in myth and legend, this landscape has much to discover. Walking through the geothermal reserve, it is hard to ignore the power of Rūaumoko (the god of volcanoes) as steam billows to the sky and mud boils and bubbles around you. Native flora, teeming with bird life, holds hidden wonders before opening up into an array of different geothermal features waiting to be discovered around every corner. From the largest hot waterfall in the Southern Hemisphere to mud volcanoes and erupting waters, you'll find it here.

Be inspired by joining one of our guided tours, offering insights into the history, cultural and scientific significance of the area. These depart daily at 10:30am and 2:30pm, subject to availability.

After your geothermal walk join us in our interactive Carving House, where our talented carvers will not only demonstrate their artistry but also guide you in creating your own taonga (treasure) to take home.





EMBRACE THE POWER OF HEALING MUD & WATERS

Nestled within an active geothermal reserve, Hell's Gate offers New Zealand's only geothermal mud bath experience. A treasured place of healing and revitalization for Māori for more than 500 years, our geothermal mud is unique to this area and renowned for its therapeutic benefits and rejuvenating properties.

Begin your journey by immersing yourself in geothermal pools as you lather yourself head to toe in silky smooth geothermal mud. Relax as nature nurtures the body and mind, opening the pores and exfoliating, detoxifying and nourishing the skin, leaving it feeling rejuvenated and fresh.

Following this indulgent experience, soothe the body in nutrient-rich sulphur spas while taking in the unique view over the geothermal landscape. Unwind to the sound of waterfalls and native birds or revitalise the body and take the plunge in the cold pool. Promoting relaxation, relieving aching muscles and offering relief for various skin ailments, the healing waters of Tikitere have been sought out for centuries.

Immerse yourself in an active geothermal reserve at Hell's Gate and connect with nature in its most primal form. It's a Rotorua experience you'll never forget.

For more information, please check our website at hellsgate.co.nz



📍 351 State Highway 30, Tikitere, Rotorua
☎ (07) 345 3151

✉ info@hellsgate.co.nz
🌐 hellsgate.co.nz



HELL'S GATE



SECRET SPOT HOT TUBS ROTORUA

Soak in your own cedar hot tub of fresh spring water surrounded by native ferns. Situated beside the breathtaking Whakarewarewa Forest, Secret Spot Hot Tubs is the perfect place to reconnect with family, friends, and nature after your day's adventures.

You'll find a relaxed atmosphere and friendly welcome when you discover our secret spot in the forest. Secret Spot Hot Tubs, nestled in the heart of New Zealand's mountain biking mecca, has won the World's Best Forest Bathing Spa award for three years running.

Unwind in your own cedar hot tub beside a forest stream and enjoy tub-side bar service at the push of a button. Our fresh water comes from a beautiful aquifer spring, heated to just the right temperature for you to enjoy a relaxing 45-minute experience. For a refreshing twist, take a dip in our complimentary cold plunge tubs during your soak.

Explore our unique café and bar in a backyard setting – we have smooth manuka-roasted coffee, Good George craft beer and cider, and Mills Reef wine. Have a bite to eat at our BaseCamp street food kitchen, play giant lawn games and enjoy our outdoor campfires, or rest your legs in a Shiny Dip foot hot tub, free with any purchase.

With free live music on the weekends and a magical atmosphere at night, Secret Spot Hot Tubs is a must-do Rotorua activity.



📍 13/33 Waipa State Mill Road, Rotorua
☎ (07) 348 4442

✉ info@secretspot.nz
🌐 secretspot.nz
📱 secretspot hottubs
📷 secretspotrotorua





AGRODOME

Situated in the heart of 350 acres of lush Ngongotahā farmland, 10 minutes from Rotorua, Agrodome has been connecting visitors to an authentic farm experience for over 50 years! One ticket gives you access to the legendary Farm Show, Farm Tour, Farmyard Nursery, Dog Trial demonstration and a whole lot more!

WORLD FAMOUS INDOOR FARM SHOW

Learn about 19 different breeds of sheep, witness a live sheep shearing demo and bid in our fun sheep auction. Go on stage to feed a baby lamb or hand-milk a cow!

Watch our remarkable farm dogs show off their skills to keep the sheep (and ducks!) in line. A fun, entertaining show for the whole family to enjoy!

INTERACTIVE ALL-WEATHER FARM TOUR

Climb aboard our all-weather, all-terrain tractor-trailer for a 45-minute, interactive tour of the farm. Stop to hand-feed our friendly sheep and alpaca!

Learn about our exotic breeds of cattle, pigs, goats and deer. Plus, enjoy a stop in our picturesque kiwifruit orchard to taste some locally produced honey. Remember your camera for some great selfies with our farm animals!

NZ'S HOME OF SHAUN THE SHEEP

Look for the big Shaun statue and smaller Mossy Bottom friends around the farm. Try the Fun with the Flock AR Trail, chill watching episodes of Shaun the Sheep, and grab some cute Shaun the Sheep merch to take home.

Visit us at Agrodome for a great value experience that creates lasting memories, for all generations. Allow 2.5 hours to get the most of your farm adventure!



© and TM Aardman Animations Ltd 2025



📍 141 Western Road, Ngongotahā,
Rotorua
☎ (07) 357 1050

✉ reservations@agrodome.co.nz
🌐 agrodome.co.nz
📍 [agrodomerotorua](https://www.agrodome.co.nz/agrodomerotorua)
📷 [agrodome](https://www.agrodome.co.nz)





HOBBITON™ MOVIE SET

In the heart of New Zealand, experience a slice of real Middle-earth™ and step into the lush pastures of the Shire™ with a fully guided walking tour of Hobbiton™ Movie Set, as featured in The Lord of the Rings and The Hobbit Trilogies.

Fall in love with the Alexander family sheep farm, just as acclaimed director Sir Peter Jackson did, as you journey on a short bus ride through the rolling green hills of the Waikato countryside, with the mighty Kaimai Ranges towering in the distance.

Your guide will escort you on a shared walking tour around the Movie Set, showcasing the intricate details, pointing out the most famous locations and explaining how movie magic was made here.

Journey past the colourful Hobbit Hole™ doors that scatter the hillsides, including the iconic Bag End, home of Bilbo and Frodo Baggins, before arriving at Bagshot Row™ ready to immerse yourself in the authentic interior of a humble Hobbit's home. Continue along the pathways past The Millhouse, across the double-arch stone bridge and into the world-famous Green Dragon™ Inn, where you will enjoy a complimentary, exclusive beverage from our Hobbit™ Southfarthing™ range to conclude your own Middle-earth adventure.

With kids under 10 years going free, this is an adventure the whole family can enjoy!

Daily departures available, bookings essential.



📍 501 Buckland Road, Hinuera, Matamata
☎ (07) 888 1505

🌐 hobbitontours.com
📱 Hobbiton Movie Set
📷 @hobbitontours



HOBBITON™
• MOVIE SET •



ADVENTURE PLAYGROUND ROTORUA

Imagine being able to travel over 750 acres of native bush taking in the spectacular views over Lake Rotorua and beyond.

Our Rotorua Adventure Playground offers you the chance to explore over 750 acres of native bush with stunning views over Lake Rotorua. The trails, originally old forestry tracks dating back to the 1930s, wind through towering totara, rewarewa, and tawa trees, creating an unforgettable experience. You can choose between the thrill of driving our 4x4 self-drive buggies or a more relaxed ride in one of our guided four-wheel-drive buggies, led by one of our experienced drivers.

For those looking for something a little different, enjoy a peaceful horse trek to a lookout that overlooks the breathtaking beauty of Lake Rotorua. Our horse treks are designed to accommodate riders of all levels, from beginners to seasoned riders, and offer a chance to connect with nature as you take in the stunning landscape.

Adventure Playground Rotorua is constantly evolving to meet the needs of our visitors. Our Clay Shooting facilities have been expanded to include three ranges: a 3-stand range, a 5-stand range, and the Hi Pheasant field with five platforms in the valley. These upgrades allow us to cater to large groups, and we also offer coaching clinics for those looking to perfect their shooting skills.

WHAT'S NEW AT ADVENTURE PLAYGROUND ?

We've recently opened a new sporting complex next to reception, nestled in the natural wetlands of Rotorua. This facility includes four lanes of archery on one side and four lanes for Airsoft or paintball target shooting. The entire complex is enclosed, ensuring fun, no matter the weather.

We're thrilled to announce our first-ever Eco Adventure experience! Our UBCO 2WD electric farm bike tours take you along our horse trek routes to the lookout, providing amazing views of Lake Rotorua. Our knowledgeable guides will show you how the bikes work, and take you on an unforgettable ride through the stunning landscape. Don't forget to ask for photos to capture your experience!

All of our activities, including our new Eco Adventure bike tours, are available to book on our website. Availability and times can be found online, so be sure to book ahead and secure your spot. We operate in all weather conditions, and we'll even provide you with wet weather gear if needed. At Adventure Playground Rotorua, we truly believe in providing a fun, unforgettable experience, no matter what the weather's like.



📍 451 Ngongotahā Road, Rotorua
☎ (07) 782 396 or 0800 782 396

✉ info@adventureplayground.co.nz
🌐 adventureplayground.co.nz
📱 @adventureplaygroundnz
📷 @adventureplaygroundrotorua





PARADISE VALLEY SPRINGS WILDLIFE PARK

Interact closely with a range of New Zealand's wild animals, native birds, farm animals and trout, and get up close to a large pride of African lions.

DON'T JUST LOOK, GET HANDS ON

Animals that are found wild around the country such as deer, goats, tahr and wallabies, as well as a range of sociable farm animals like alpacas, miniature horses and sheep can all be hand-fed throughout the day.

UP CLOSE WITH THE NATIVE BIRDS

Visit the kea, New Zealand's infamous and comical parrot, in their walk-through aviary, and see kakariki and kereru birds. Stroll through our waterbird wetland for great views of native and introduced waterfowl, and look out for the different native birds living wild around the park.

CASCADING WATERWAYS

Fern-edged pools show off hundreds of rainbow and brown trout. Feed the wild trout in the natural stream and get eye to eye at the underwater viewing window. Look out for large native long-finned eels lazing in their ponds.

NATURE AT ITS BEST

Pathways through native trees lead to our freshwater spring where you can drink straight from the source, then purchase some of our own bottled 'Paradise Pure' to take away with you.

Take our elevated treetops walk in a tranquil and secluded area of the park, putting you up near the canopy of the trees.

THE PRIDE OF PARADISE

A pride of African lions can be seen all day in their enclosure that allows visitors to get very close to these formidable animals. Two lion cubs born in November 2024 can be patted at 10.45am and 3.15pm daily as part of the standard admission. Patting available until mid 2025 – please check website for details.



📍 467 Paradise Valley Road, Rotorua
☎ (07) 348 9667

✉ info@paradisev.co.nz
🌐 paradisevalleysprings.co.nz
📱 paradisevalleysprings
📷 paradisevalleysprings





WHAKAREWAREWA, THE LIVING MĀORI VILLAGE

Home to two Māori subtribes for over 130 years, Whakarewarewa offers an intimate and authentic Māori experience, set on a geothermal plateau offering day-time experiences. One of New Zealand's most iconic destinations, Whakarewarewa will create memories of a lifetime for all ages.

Set in a geothermal wonderland, Whakarewarewa residents have been sharing their lifestyle with visitors for generations.

WHAKAREWAREWA LEGACY GUIDED VILLAGE TOUR

Experience an iconic guided tour of our village with a local, learning Māori culture, history and traditions that have been passed down through generations, including a chance to experience the unique taste of a corn cob cooked in our largest hotpool. Get close to the best of Rotorua's geothermal treasures, including Pōhutu, the largest geyser in the Southern Hemisphere.

WHAKA GEOTHERMAL TRAILS

Enjoy untouched landscapes on our self-guided geothermal trails experiencing the raw nature of Papatūānuku (Mother Earth). These Jurassic park-like trails are described as providing regenerative powers as you find yourself face to face with hot-spring lakes, unique flora and fauna, as well as views of our home from various lookouts. To take your exploration to the next level, we have an exclusive e-bike hire and trails experience into previously non-accessible areas of the reserve. This is an ideal outdoor adventure for families, couples and small groups of up to 10 people.

CULTURAL PERFORMANCES

Enhance your visit with a cultural performance. Sit back and relax to the melodious sounds of our local Kapa Haka group as they serenade you with song and dance that pertain to our people. Watch in awe as the fierce haka is performed, followed by a duet singing the tender love story of our ancestors Hinemoa and Tutanekei.

Open daily, 9.00am - 4.00pm. Closed on Christmas Eve and Christmas Day.



📍 17 Tryon Street, Whakarewarewa,
Rotorua
☎ (07) 349 3463

✉ bookings@whakarewarewa.com
🌐 whakarewarewa.com
📱 [whakarewarewarotorua](https://www.facebook.com/whakarewarewarotorua)
📷 [whakarewarewa](https://www.instagram.com/whakarewarewa)





EXPERIENCE THE KAITIAKI DIFFERENCE

Kaitiaki Adventures offers superior and unforgettable white-water rafting, sledging and hiking experiences. We give our clients an initiation into aspects of Māori culture through myth and legends and karakia (Māori prayer) all whilst experiencing the ultimate adrenaline rush. World-class half-day experiences.

RAFT THE KAITUNA RIVER WITH OUR WORLD-CLASS GUIDES

Snake through steep bush-clad canyons and over 14 awesome drops including the highest commercially rafted waterfall in the world: The seven-metre-high Tutea Falls. Blended with a touch of Māori culture, this trip offers it all, for both white-water rafting enthusiasts and first timers. Grade 5.

KAITIAKI ADVENTURES ARE NEW ZEALAND'S ORIGINAL WHITE-WATER SLEDGING SPECIALISTS

There is something for everyone on this beautiful scenic excursion. Play in holes and awesome rapids to negotiate your way through as you are in charge of your own vessel. Take the river on at eye level and propel yourself through the water by the flippers on your feet. Our qualified guides are there to encourage, motivate and help you where necessary.

NEW ZEALAND'S ONLY MT TARAWERA VOLCANIC CRATER WALK

Experience the majesty of Mt Tarawera. Infamous for its eruption on June 10th, 1886, Mt Tarawera created the world's youngest geothermal valley of Waimangu, at the same

time destroying the legendary Pink and White Terraces. This fully guided walking experience encompasses the unique landscape and history of the area.

Begin with an off-road 4x4 journey through native New Zealand bush, transporting you to the craters edge. With unmatched scenic vistas and 360-degree views, this experience is ideal for all ages and includes an optional run in to the heart of the volcanic crater.

No previous experience is required on any of the excursions we provide. Kaitiaki Adventures will give you all the training and safety equipment of the highest standard to make it a safe yet unforgettable journey.

Our world-class guides are all NZQA qualified, and our business is Qualmark GOLD endorsed and a Maritime Safety certified operation.



📍 1135 Te Ngae Road, Tikitere, Rotorua
☎ 0800 338 736 / (07) 350 1151

✉ bookings@kaitiaki.co.nz
📧 kaitiaki.co.nz
📧 kaitiakiadventuresaotearoa
📧 kaitiakiadventures





POLYNESIAN SPA

Polynesian Spa, located on Lake Rotorua, offers a world-class geothermal bathing experience. Fed by the therapeutic Priest and Rachel Springs, its mineral pools provide unique healing benefits. With stunning lake views, signature therapies, and facilities for all ages, it remains a top wellness destination in New Zealand and beyond.

Nestled on the shores of Lake Rotorua, Polynesian Spa stands as an icon of rejuvenation and relaxation, steeped in rich history and natural beauty. Established over a century ago, this historic spa has earned its place as New Zealand's leading geothermal bathing destination, drawing visitors from around the globe.

Polynesian Spa's heritage is intertwined with the region's geothermal wonders, offering mineral pools fed by two distinct springs renowned for their therapeutic properties. The acidic Priest Spring is celebrated for soothing muscles and joints, while the alkaline Rachel Spring leaves the skin feeling soft and nourished. Guests can seamlessly transition between these pools, exploring different temperatures and properties, while enjoying spectacular views over Lake Rotorua. Private Lake View Pools boast incredible Sulphur Bay views and are perfect for those wanting quality time alone.

Recognised with numerous accolades, Polynesian Spa has been lauded as one of the world's top spa destinations on multiple occasions. Its offerings extend beyond bathing, with signature therapies such as the revitalising Aix jet therapy, geothermal mud wraps, and indulgent body and facial treatments available in dual suites or single rooms.

All ages are welcome at Polynesian Spa, which caters to families, couples, groups, and individuals alike. Private Wellness Room facilities are perfect for group gatherings and wellbeing itineraries.

After soaking, visitors can enjoy healthy bites at 88Ra Café or browse the Spa Essentials gift shop for curated locally made skincare products and thoughtful souvenirs.

With its rich geothermal heritage, breathtaking lake views, and world-class wellness offerings, Polynesian Spa continues to set the standard for spa experiences in New Zealand and beyond.



📍 1000 Hinemoa Street, Rotorua
☎ (07) 348 1328

✉ info@polynesianspa.co.nz
🌐 polynesianspa.co.nz
📱 polynesianspa
📷 polynesianspa





WAI-O-TAPU THERMAL WONDERLAND

Explore spectacular nature and geothermal wonders at Wai-O-Tapu Thermal Wonderland, just a 20-minute drive south of Rotorua. Cashless site – all major credit cards and EFTPOS available.

EXPLORE YOUR OWN BACKYARD

Nestled in a natural bush setting and sculpted over thousands of years by volcanic activity, a series of defined tracks create a unique and wondrous experience.

“One of the 20 Most Surreal Places in the World” - Trip Advisor

Explore spectacular nature at New Zealand's most colourful natural volcanic park.

Walks through this unique geothermal area take between 45 and 90 minutes and are great for all ages and abilities. These self-guided walks allow you to go at your own pace and are suitable for families. Discover a wide range of amazing photo opportunities and features including the world famous Champagne Pool, naturally coloured hot and cold springs, steaming ground, mud pools, expansive vistas, huge volcanic craters and the largest formation of sinter terraces in the Southern Hemisphere.

The Visitor Centre has a retail area to browse and a relaxing café to enjoy with the family. Our Sky Deck provides a great area to enjoy outdoor seating also. Picnic areas are available both inside and outside the park.

Families can enjoy the open spaces where our staff have created games for children to enjoy while you sip on our great barista made coffee.

LADY KNOX GEYSER PRESENTED DAILY AT 10.15AM

Set in its own amphitheatre, a short drive from the main park is the Lady Knox geyser which is presented daily at 10.15am.

This is an assisted eruption of a natural geyser and is carefully induced in an environmentally friendly manner. It is a unique opportunity to see a geyser in action and our knowledgeable guide will provide you with the story behind this unique feature.

OPEN DAILY

Wai-O-Tapu Thermal Wonderland is open 7 days including public holidays (closed Christmas Day) from 8.30am - 4.30pm. Last admission is 3pm.

Tickets to the geothermal park and Lady Knox geyser can be purchased online. Alternatively, ticket purchases are available at the visitor centre.

If you are attending the Lady Knox geyser show, it is advised to arrive by 9.45am.



📍 201 Waiotapu Loop Road, RD3,
Rotorua
☎ (07) 366 6333

✉ info@waiotapu.co.nz
🌐 waiotapu.co.nz
📱 waiotapunz
📷 waiotapu_wonderland_nz

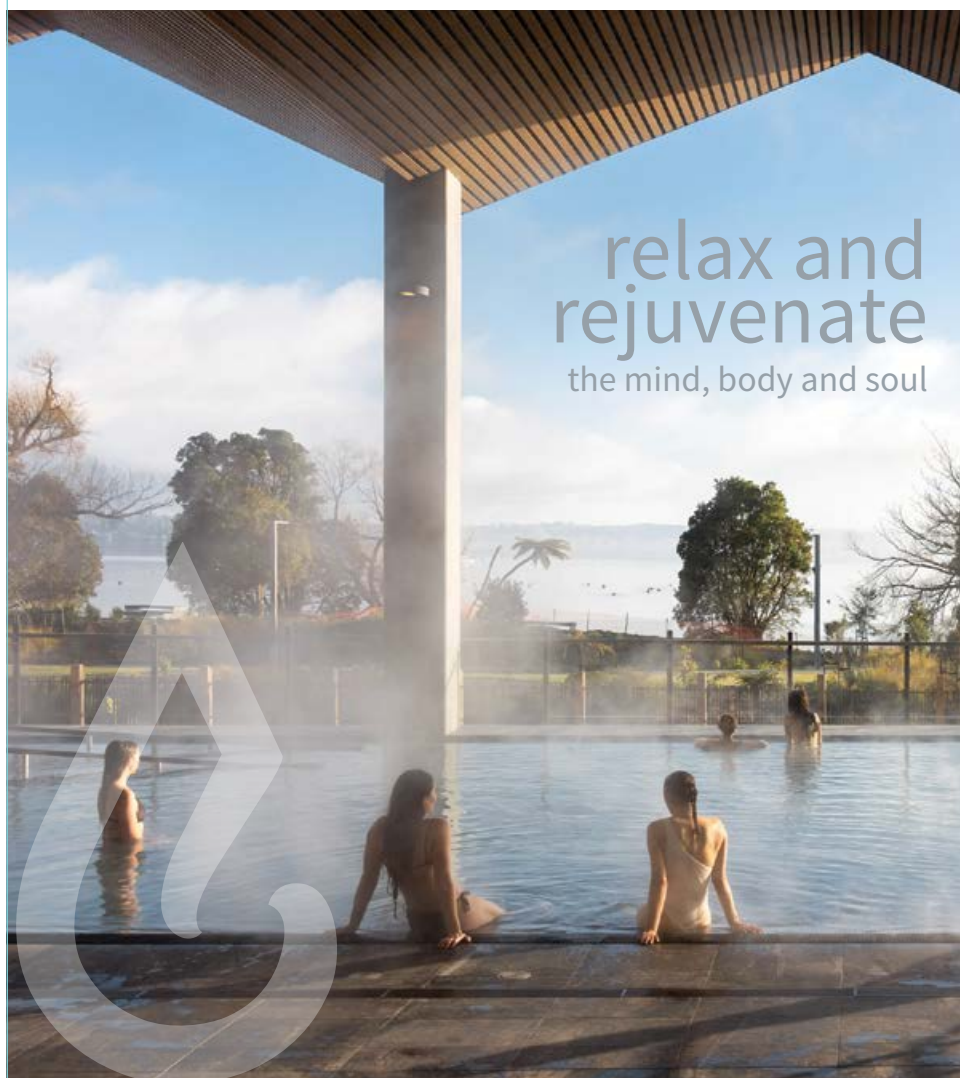


WAI ARIKI

HOT SPRINGS AND SPA

We invite you to experience... Wai Whakaora Restorative Journey

Unique in the world - this luxury 2 hour cultural wellness journey combines cultural commentary with the healing powers of geothermal heat, water, mud and steam.



Book online using promo code **RJWELLNESS**
to redeem our special **AUTUMN/WINTER OFFER**

07 349 7111

info@waiariki.co.nz

www.wai-ariki.co.nz

 [wai_ariki_spa](https://www.instagram.com/wai_ariki_spa)



ROTORUA CANOPY TOURS

World's Best Nature Adventure.

Step into a world unlike any other. Nestled in a secluded part of Rotorua lies the entrance to a truly magical experience - a restored ancient forest bursting with life. As you wander into this lush landscape, you'll be greeted by towering trees, vibrant native plants, and the sweet sound of birdsong. With Rotorua Canopy Tours, you're not just walking through the forest; you're flying above it!

At Rotorua Canopy Tours, we take you on a ziplining journey that combines adventure with a deep appreciation for New Zealand's natural heritage. Recognised by TripAdvisor as one of the top 11 experiences out of 400,000 activities worldwide, our tours are a must-do. With every ticket sold, you're not just signing up for a thrilling experience, you're also contributing to the ongoing restoration of the Okoheriki Forest (Dansey Road Scenic Reserve).

THE ORIGINAL CANOPY TOUR

Perfect for fun-seekers of all ages, the Original Canopy Tour is an award-winning experience that takes you on a three-hour journey through the treetops. Our expert guides will share stories of what New Zealand used to be like and highlight the conservation efforts that are helping to restore this protected forest. As you glide between platforms and cross suspended bridges, keep an eye out

for friendly native birds like wood pigeons, tūi, and the charming North Island robin. This tour offers a perfect blend of excitement and education, making it ideal for families and friends looking to create unforgettable memories together.

THE ULTIMATE CANOPY TOUR

For those seeking an extra thrill, the Ultimate Canopy Tour offers a heart-pounding adventure that takes you higher, longer, and deeper into the forest. This tour features a breathtaking 50-metre-high suspended walkway, exciting swing bridges, and a 400-metre tandem zipline - perfect for sharing the experience side-by-side with a loved one. Whether you're soaring over deep valleys or exploring the forest's unique volcanic formations, this tour pushes the boundaries of your bravery against a backdrop of incredible natural beauty.

GET ATTACHED: EXPERIENCE THE WORLD'S TOP NATURE ADVENTURE

Whether you're with family, friends, or your special someone, Rotorua Canopy Tours offers a magical way to connect with nature and each other. Your safety and enjoyment come first, and our friendly, knowledgeable guides will ensure you have a fun and memorable experience from start to finish.



📍 147 Fairy Springs Road, Rotorua
☎ (07) 343 1001

✉ hello@canopytours.co.nz
📄 canopytours.co.nz



LAKEVIEW GOLF AND COUNTRY CLUB

Come and enjoy a unique 18 hole par 71 golfing paradise
with stunning views where everyone is welcome.



Enjoy a beautiful golf course with undulating fairways, challenging greens and stunning views overlooking Lake Rotorua and Mokoia Island. Hazards include bunkers and bush-clad gorges. As you play your round, you will enjoy the spectacular vistas across the lake to Mount Tarawera and Mount Ngongotahā which stand proudly steeped in local history.



The peace and tranquility of Lakeview and the sounds and antics of native birds such as the tui, bellbird, fantail and kereru will add to this unique golfing experience.

The club has a fully stocked pro shop and covered driving range for all your golfing needs. Clubs, trundlers and electric carts are available for hire.



Come and check out our new clubhouse! Great option for a function venue, with a meeting room also available for hire. Catering and bar facilities available.

📍 704 State Highway 5, Tarukenga,
Rotorua
☎ (07) 357 2341

✉ info@lakeviewgolf.co.nz
📧 lakeviewgolf.co.nz



BEHIND THE SCENES AT NATIONAL KIWI HATCHERY AOTEAROA

Discover the world's largest and most successful kiwi hatching and chick rearing centre.
An educational, thought-provoking, and unique experience, providing an unforgettable insight into our iconic national bird. 100% of your ticket entry goes back to the kiwi hatching programme.



At National Kiwi Hatchery, the exclusive Behind the Scenes tour offers manuhiri (guests) the chance to meet one of our highly trained, expert kiwi keepers. You'll learn about incubation and kiwi chick-rearing techniques from our global experts and be invited into a staff-only area where you will be able to get up close to kiwi in our care.



You will learn about kiwi chick-rearing techniques and become part of conservation in action by helping to review individual chick notes and observe a kiwi health check up close. Only visitors on this exclusive Behind the Scenes tour may have the unique opportunity for a photo taken with a chick – this is at discretion of the kiwi keeper, in consideration of the welfare of the kiwi.



This is an educational, thought-provoking, and unique guided tour at our newly developed, state-of-the-art facility. We look forward to welcoming you for an experience you will never forget.

Due to limited availability of these tours, bookings must be made in advance.

📍 141 Western Road, Ngongotahā, Rotorua
☎ 0800 724 626

✉ reservations@nationalkiwihatchery.org.nz
📧 nationalkiwihatchery.org.nz



OFF ROAD NZ - DRIVEN BY ADVENTURE!

Creating fun memories and lasting impressions with unforgettable adrenaline fuelled adventures since 1992, Off Road NZ is where you go to push the limits and have the best fun you can have off-road.



Encounter all-terrain, action-packed, premium adventure experiences while surrounded by nature. Perfect for families, friends and groups, come rain or shine! From 9am daily.

4WD BUSH SAFARI

Get behind the wheel, rugged and remote, the trail is full of unknowns with plenty of thrills along the way.



RACELINE KARTING

Exhilarating, sensational Karting fun on our 1.2km outdoor race circuit, reach speeds close to 100 km/hour on the 150 metre straight.

MONSTER 4X4 THRILL RIDE

Brace yourself for the power and brute force of an all-terrain experience. No roof, no doors



there is nothing between you and the great outdoors.

CLAYBIRD SHOOTING

Test your skills and accuracy! With real shotguns and live ammunition it's not as easy as it looks!

Corporate and group entertainment also available.

📍 193 Amoore Road, RD2, Rotorua
☎ (07) 332 5748

✉ drive@offroadnz.co.nz
🌐 offroadnz.co.nz



ZORB ROTORUA - SLIDE WHILE YOU RIDE!

Superman dive into a giant inflatable ball with water and roll down Mt Ngongotahā with ZORB, where the fun will have you laughing uncontrollably. ZORB Rotorua is proudly owned and operated by the inventors of this iconic New Zealand bucket-list adventure activity.

Discover FOUR different ball rolling tracks – the world's longest zig-zag Sidewinder Track, the smooth 'n' fast double Straight Track, MEGA Track – the longest, steepest & fastest track in all the land, and our newest track Pipeline, with a treeline tunnel and a sweeping half-pipe finish.

ZORB is the perfect opportunity to let your inner child come out to play. Think of it like a giant water slide, 40 litres of (warm in the winter, cool in the summer) water, slipping and sliding – with no tumbling involved.

Those crisp, cool and clear winter days make the view from the hot tub at the top of the hill that much more magnificent while you wait for your next ride.



📍 525 Ngongotahā Road, Rotorua
☎ (07) 343 7676 or 0800 646 768

✉ info@zorb.com
🌐 zorb.com





KATO A Jet
ROTORUA NZ

BOOK NOW

☎ 0800 538 7746 ✉ info@katoalakerotorua.co.nz
🌐 www.katoajet.co.nz

QUAL MARK SILVER

AMAZEME ROTORUA

“Have fun - get lost!”

aMAZEme is a family-owned and operated business, centred around ‘old-school’ fun and affordable family entertainment. A perfect choice for families, parties, functions, corporate events, and school groups.

Set in the idyllic Paradise Valley, aMAZEme has plenty to offer all ages. The prime attraction is of course the 1.4km Hedge Maze, with an average completion time of 20 minutes (first to the middle wins!).

If losing yourself doesn’t tempt you, we have a range of games that surely will, including tic-tac-toe, tug of war, stilts, sack races, our giant take on the classics - Connect 4, Snakes and Ladders, Checkers, and Peg Solitaire plus more.

Bring the family, friends, and your own picnic to enjoy while you’re here—unleash your inner child and try it for yourself!

Open Thursday to Monday, 10am – 4pm, and open every day during the school holidays.



📍 1335 Paradise Valley Road, Rotorua
☎ (07) 357 5759

✉ amazeme@xtra.co.nz
🌐 amazeme.co.nz



MOUNTAIN JADE

Step inside our studio for an exclusive, behind-the-scenes experience. This is your chance to meet local Rotorua artists, see a live jade carving demonstration, and choose your very own piece of pounamu to treasure forever.



In the heart of Rotorua's city centre, just a short walk from the must-see Government Gardens, our artists are absorbed in their craft, passionately hand-carving New Zealand pounamu with love and dedication.

They invite you to come and discover the stories behind their carvings on a behind-the-scenes tour of our jade carving studio.



You'll get up close to the action and spend unforgettable one-on-one time with our artists, learning about the jade carving process and watching live carving demonstrations. As you embark on a journey into the history of New Zealand pounamu, you'll discover fascinating insights into the stone's cultural significance and the values it represents.



You will even have a chance to try your hand at original Māori carving techniques using sandstone to shape pounamu. And, to top it all off, you'll choose your very own piece of pounamu, which we will show you how to string into a necklace to take home and treasure forever. Tours depart daily at 10am, and bookings are essential.

📍 1288 Fenton Street, Rotorua
☎ (07) 349 1828

✉ rotorua@mountainjade.co.nz
🌐 mountainjade.co.nz



BURIED VILLAGE OF TE WAIROA

Where stories of the Tarawera eruption come to life.



Discover stories of survival and resilience displayed in our museum exhibits and over 1km of heritage excavations. Take a peaceful walk through the site where the people of Te Wairoa lived before the eruption, including the Te Wairoa Stream and waterfall trail. Though often described as calm and serene, the landscape still carries the hidden scars of one of New Zealand's deadliest disasters.



Immerse yourself in our new virtual reality experience. Step back in time and join one of the last groups of travellers to visit Te Wairoa pre-eruption. Admire the natural marvel that was the Pink and White Terraces, and experience the power of the volcanic event that unfolded on June 10th, 1886.



After your walk, relax and enjoy a delicious bite to eat and have a drink in our café – the perfect way to refuel before you carry on to your next adventure.

Open Wednesday – Sunday, 10am – 4pm

📍 1180 Tarawera Road, Rotorua
☎ (07) 362 8287

✉ discover@buriedvillage.co.nz
🌐 buriedvillage.co.nz

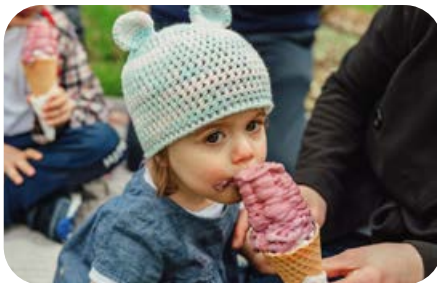


MAMAKU BLUE – BLUEBERRY ORCHARD & SHOP

Welcome to the wonderful world of blueberries. You will be amazed at the many products made from these little globes of health.



Frozen blueberries and gooseberries available all year round together with many products made on site, like delicious 100% blueberry juice, blueberry or gooseberry jams, chutneys, fruit liqueurs and much more. Orchard tours by booking only – come and find out more about our blueberry business that was



started in early 1980s. Real fruit ice creams are served whatever the weather. For history enthusiasts, the Mamaku Blue building includes a private collection with over 100 years of Mamaku history on display.



We are located 20 minutes from Rotorua, at Mamaku Plateau, where volcanic activity shaped the beautiful landscape many years ago. Our shop is open daily, closed only Christmas Day, Boxing Day, Good Friday and Anzac Day.

📍 311 Maraeroa Road, Mamaku
☎ (07) 332 5840

✉ info@mamakublue.co.nz
🌐 mamakublue.co.nz



SINCE 1982
**MAMAKU
BLUE**

Waikite Valley HOTPOOLS

Rotorua's Favourite Hotpools

100% pure natural geothermal water

Experience the 'Living Waters' of Te Manaroa Spring
- the largest single source of 100% pure boiling water in New Zealand.
Let all of your worries melt away as you take a dip in one of our many hot pools.

Opening Hours

10.30am – 8.00pm daily

Last entry 7.00pm

(except for Christmas Day and Boxing Day)



648 Waikite Valley Road, Rotorua

(07) 333 1861



info@hotpools.co.nz



hotpools.co.nz



ROTORUA DUCK TOURS

Explore Rotorua's incredible lakes district on New Zealand's only WWII landing craft, 'The Duck'. Experience the thrill of driving from land to lake without leaving your seat. Perfect for all ages.



On the guided tour you will experience the thrill of riding in an authentic WWII amphibious craft, affectionately known as a "Duck", view spectacular natural landscapes and Rotorua's incredible lakes district. Splashdown on up to 4 lakes while being entertained and informed by our legendary guides who will bring Rotorua alive by retelling stories of the past, along



with providing information on Māori culture, geothermal wonders, historic sights, flora and fauna and much more. Learn about the Ducks' WWII history.

Two tours run daily in all weather: the 90-minute Rotorua City and Lakes Tour, and the 120-minute Tarawera and Lakes Eco-Tour.



Our Tarawera and Lakes Eco-Tour provides a more focused look at Rotorua's rich history and environment.

Tours depart at regular intervals throughout the day and are perfect for both young and old.

📍 1241 Fenton Street, Rotorua
☎ (07) 345 6522

✉ info@ducktours.co.nz
🌐 rotoruaducktours.co.nz



Lady Janes Ice Cream Parlour

*fresher, brighter & yummiier than ever
treat yourself, you deserve it!*

- Over 50 flavours
- Sundaes
- Milkshakes
- Danish Waffle Cones
- Warm Desserts
- Smoothies
- Coffee

1092 Tutanekai Street
(Eat Street) | Rotorua

@ladyjanesicecream



TRY OUR KIWI EXPERIENCES



- LAND ON THE SUMMIT OF MT TARAWERA • FLOATPLANE LAKESIDE PICNIC GETAWAY
- TARAWERA FALLS VOLCANIC HELI HIKE • FLOATPLANE HIKES

Lakefront Drive, Rotorua City Lake Front, Rotorua NZ | 0800 800 848 | VOLCANICAIR.CO.NZ

3D TRICK ART GALLERY

Immerse yourself in a world of optical illusions and fun at Rotorua's premier 3D Trick Art Gallery.

Step into an unforgettable world where you, your friends, and whānau become part of mind-bending illusions. Perfect for the young and young at heart, the gallery promises endless fun and epic photo ops that turn every moment into a memory you will cherish forever.

Located at the Rotorua Heritage Farm, this one-of-a-kind gallery is the only place in New Zealand featuring 50+ life-size, ultra-realistic 2D artworks that magically transform into 3D photos through your camera's lens. All you have to do is be creative and strike a pose, snap away, and watch the artwork come alive.

Whether rain or shine, you're in for a fun-filled experience with countless interactive adventures to choose from. The 3D Trick Art Gallery is the ultimate destination for a day of laughs, creativity, and memories that will last a lifetime.



📍 171 Fairy Springs Road, Rotorua
☎ (07) 349 0920

✉ info@3dtrickart.co.nz
📄 3dtrickart.co.nz



3D TRICK ART GALLERY

MOTION ENTERTAINMENT

Discover the Ultimate Indoor Entertainment Hub at Motion Entertainment!



Looking for the perfect place to play, laugh, and make unforgettable memories? Motion Entertainment is New Zealand's largest indoor entertainment destination, packed with excitement for all ages!

Challenge your friends in the arcade, show off your skills in tenpin bowling, jump to new heights in the tramp park,



or conquer the ninja park. There's something for everyone, including mini golf, VR experiences, escape rooms, Chipmunks Playland, and more - all under one roof!

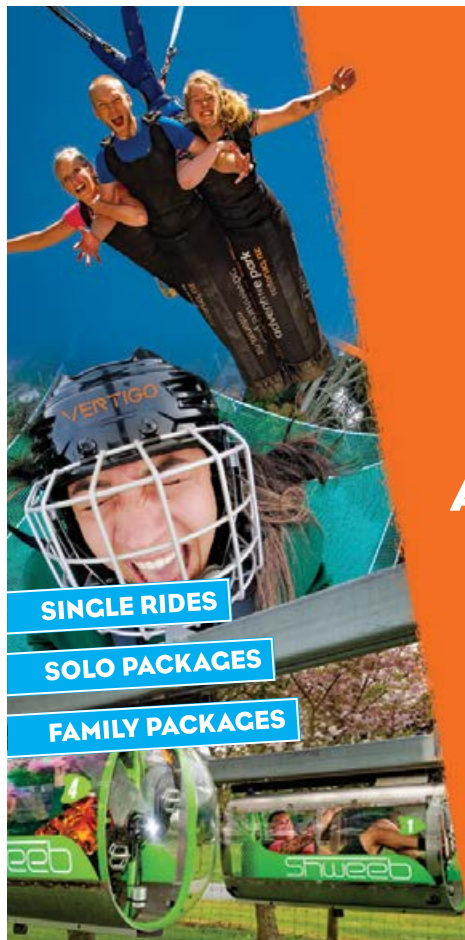
Planning a birthday party, corporate event, or school trip? We have got you covered with tailored packages designed for every group size and occasion.



Rain or shine, Motion Entertainment is here every time! Gather your crew and experience non-stop action, adventure, and excitement today!

📍 366 Te Ngae Road, Lynmore Junction, Rotorua
☎ 0800 HAVE FUN (0800 4283 386)

✉ bookings@motionentertainment.co.nz
🌐 motionentertainment.co.nz



VELOCITY VALLEY



NEW ZEALAND'S ADRENALINE PARK FOR ALL AGES

FREE PHONE 0800 949 888

E. reservations@velocityvalley.co.nz
1335 PARADISE VALLEY ROAD
ROTORUA, NZ

velocityvalley.co.nz





DRIFT KARTZ

Race on one of the slipperiest indoor go kart tracks in New Zealand. With the best price go karting in Rotorua.

Come and try our purpose-built indoor go-kart drift track. Perfect for all weather conditions. Our track has a special surface giving you one of the most difficult tracks you will encounter. Imagine trying to control an out-of-control race car! That's what DriftKartz is all about.

Come and try our 400cc kartz!

Great for:

- ❖ Families
- ❖ Team building and corporate events
- ❖ Sports teams and social clubs

📍 10 Old Taupō Road, Rotorua
☎ (07) 345 6211
✉ driftkartz@xtra.co.nz
🌐 driftkartz.co.nz



MITAI MĀORI VILLAGE

Embrace the history and culture of our people, discovering who we are, the indigenous people of Aotearoa New Zealand.

Stories unfold through the dynamic scenes of warriors paddling the war canoe down Wai-o-Whiro Stream. The melodious sounds of instruments and entertainment are highlighted through the performing arts.

Enjoy the traditional hāngi dinner followed by an evening walk through the forest visiting the old village site and discovering the sacred natural spring Te Puna Tapu o Tūhoe. End the evening in awe of the glow worms lighting the banks of the forest.

📍 196 Fairy Springs Road, Rotorua
☎ (07) 343 9132
✉ reservation@mitai.co.nz
🌐 mitai.co.nz



FOR A ONE OF A KIND EXPERIENCE



Come and browse our gorgeous range of high-quality, decorative and functional glass art.

We love to share the excitement of working with glass with visitors to our studio. Our workshops are a chance to experience glass-making firsthand and to keep a unique piece of glass art of your creation. *Make your booking today!*



AMOKURA GLASS

153 FAIRY SPRINGS ROAD, ROTORUA
(OPPOSITE THE LUGE)

www.amokuraglass.com



HORSE TREKKING LAKE OKAREKA

Horse rides through native bush and over green pastures while enjoying spectacular views of Lake and Mount Tarawera.

Rides to suit all abilities from beginners to experienced riders. Experienced riders are able to trot and canter. Daily departures at 10am, 1.30pm, and times to suit. Various trekking routes on offer, depending on trail conditions and rider experience. Trek through dense native bush, onto green

pastures, across sheep and cattle country, and to the top of the farm with views over lakes Rotorua, Ōkāreka, Tarawera, Rotomahana, Ōkataina, Rotokakahi, and Mount Tarawera. What a fantastic way to enjoy the fresh air and experience the region. Treks from 30 minutes to 2.5 hours.

📍 51 Acacia Road, Lake Ōkāreka, Rotorua
☎ (021) 292 2233
✉ lucy@treklakeokareka.co.nz
📄 treklakeokareka.co.nz



ROTORUA GOLF CLUB

Visitors are always welcome. We cater to individuals, groups and corporate bookings.

Rotorua Golf Club, a unique course situated on the Arikikapakapa Reserve (the place of hot splashing water) at the southern entrance to Rotorua, with its full 18 holes spread around both dormant and active geothermal areas.

Steaming hot pools, bubbling mud and ancient bunkers make up the unique golf hazards found at this stunning thermal course.

Golf Shop, electric carts, and our café/bar ensure players of all levels get to enjoy this once-in-a-lifetime experience.

📍 399 Fenton Street, Rotorua
☎ (07) 348 4051
✉ golfshop@rotoruaclub.nz
📄 arikikapakapagolfrotorua.co.nz



SELF-DRIVE RAIL CARS

AN ALL WEATHER EXPERIENCE



BOOK NOW

0800 72 45 74

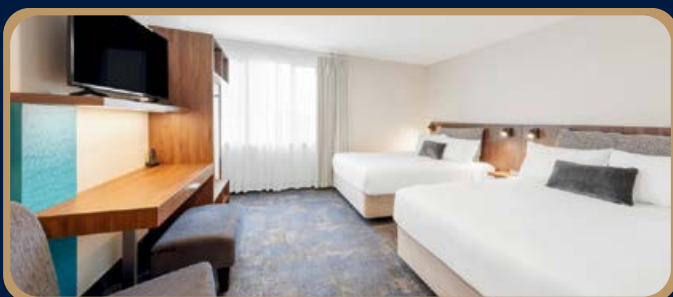
railcruising.com

[RailCruising](#)



Unwind, Relax & Recharge

Nestled in the heart of Rotorua, JetPark Hotel offers the perfect base for discovering the rich cultural heritage of Rotorua. With 63 guest rooms, JetPark Hotel Rotorua is a family-run hotel, with an outstanding team dedicated to personal and caring service.



**Call us for
more info**



0800 538 466

237 Fenton Street, Rotorua

jetparkrotorua.co.nz

rotorua@jetpark.co.nz



KOURA LODGE

Explore, relax and enjoy your journey. Koura Lodge is lakeside lodging at its best, offering boutique bed and breakfast lakeside in Rotorua.

Enjoying an unrivalled lakefront location, Koura Lodge is at the centre of it all. Just 10 minutes' drive to the city centre and even closer to many of Rotorua's world-famous attractions.

Offering only 10 exclusive guest rooms, all with private ensuites and lake views opening to hardwood verandas and 180-degree lake views rarely accessible to tourists.

Lodge rooms are perfect for a private getaway for couples and suites give a bit more space for those that need it or for a longer stay. A separate living room in the lodge suites lets you stretch just that bit further.

Perched at the top of the property sits our two-bedroom apartment overlooking the native gardens and out to lake Rotorua. The apartment is perfect for families, offering a full kitchen, living, dining and billiard table.

Spa, sauna and kayaks are all set out on the lakefront ready for you.

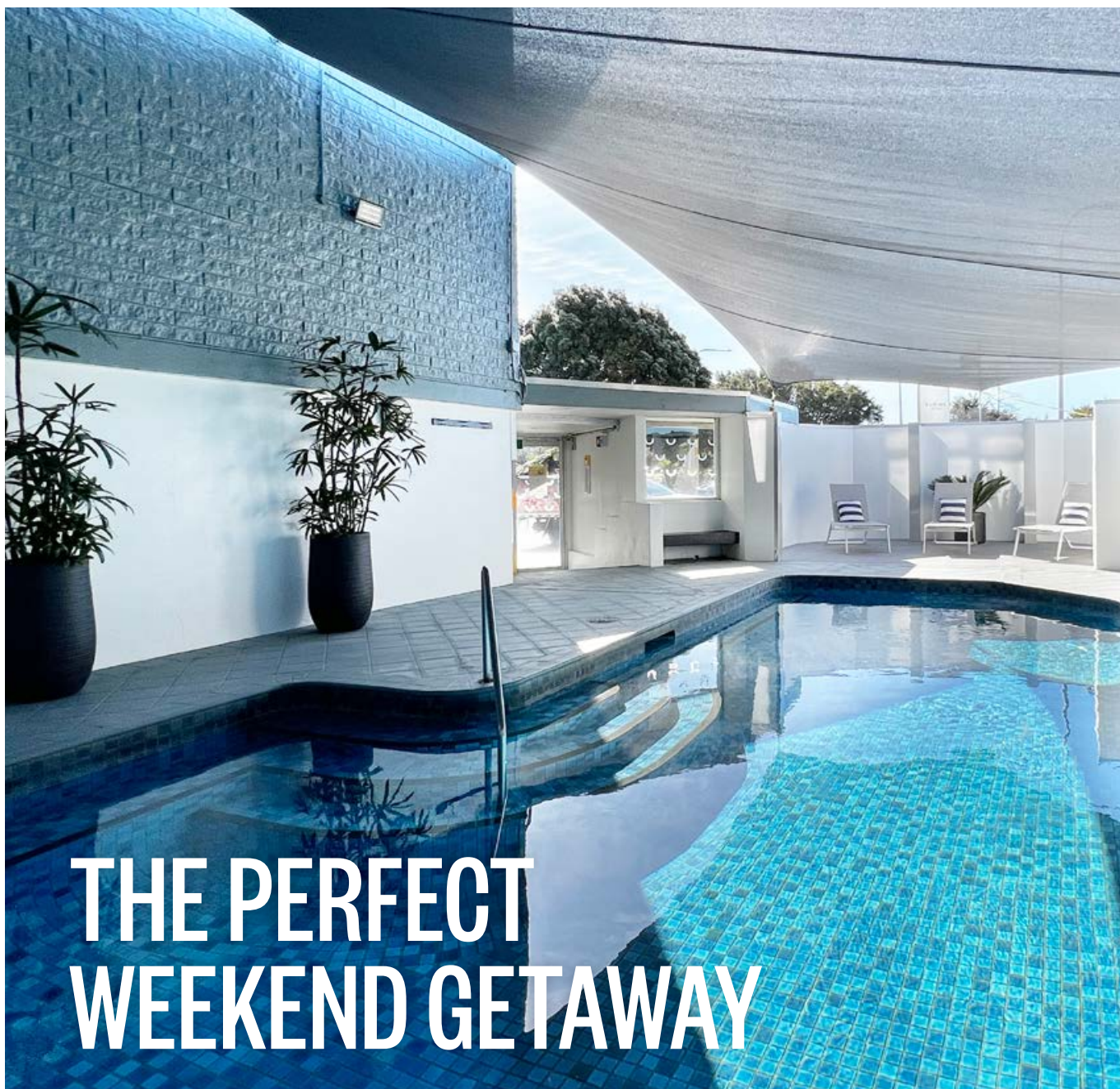


📍 209 Kawaha Point Road, Rotorua
☎ (07) 348 5868

✉ stay@kouralodge.co.nz
📄 kouralodge.co.nz
📷 kouralodge



Koura Lodge
LAKE ROTORUA



THE PERFECT WEEKEND GETAWAY

SUDIMA ROTORUA

Sudima Rotorua sits on the shore of mystical Lake Rotorua with views across the water, and is just a short stroll from the vibrant town centre and Polynesian Spa. This well-appointed home-away-from-home has all the facilities and features you'd expect from a 4-star hotel, as well as a few that set it apart including a geothermally heated swimming pool and optional Māori cultural performance and hāngī buffet dinner. Sudima Rotorua's relaxed atmosphere and great value make it the perfect location to stay while exploring the world-renowned wonders of Rotorua.

1000 Eruera Street, Rotorua
sudimahotels.com

SUDIMA
HOTELS

RIPPLE ROTORUA

Ripple Rotorua is nestled on the edge of the crystal-clear Waiowhiro Stream, on the doorstep of Rotorua's must-do attractions near the outskirts of town. Its spacious and peaceful surroundings envelop guests in an oasis of green. Enjoy year-round heated swimming, private spas and the top-rated on-site restaurant, The Brook.

Located close to Skyline Rotorua's gondolas, luge and MTB trails, Ripple is walking distance from Volcanic Hills Winery, Rotorua Canopy Tours, ZORB, Mitai Māori Village, and Adventure Playground. The city, forest, lakes, and much more are also only 10 minutes' drive away.

Ripple offers Rotorua's largest self-contained units, from spacious studios to larger fully equipped, three-bedroom family apartments, private hot tubs, and everything in between.

With a variety of facilities, Ripple has everything you'll need, including a heated outdoor swimming pool and spa, children's playground, mini golf, games room, secure Mountain Bike storage and our on-site restaurant, The Brook, which is rated amongst the top Rotorua restaurants on TripAdvisor.

Ripple Rotorua is owned by the same award-winning, eco-friendly team at Aura Accommodation. Come experience true Kiwi hospitality from the friendly, local team which prides itself on connecting guests to the best our beautiful city has to offer. We won't blame you if you don't want to leave!



📍 4 Barnard Road, Fairy Springs, Rotorua
☎ (07) 347 9497

✉ info@ripplerotorua.co.nz
🌐 ripplerotorua.co.nz



ROTORUA THERMAL HOLIDAY PARK

With more than 150km of purpose-built mountain biking trails just a 5- to 10-minute bike ride from our park, you won't find a better location for your forest adventure.



Enjoy FREE hot pools, on-site bike wash and storage. Stay in our tent, campervan or caravan sites, dorm rooms, studios, authentic log cabins, ensuite log cabins, fully self-contained flats, or luxurious fully equipped and spacious motel units.



Our guests have access to our well maintained communal kitchen facilities, gas BBQs, bathrooms, laundry, TV rooms, swimming pool (seasonal), kids play area and kids mountain bike track. A visit to Rotorua is not complete without soaking in our free hot pools which are accessible to all guests.



All this surrounded by mature trees and gardens. Rotorua has become a mecca for mountain bikers, travellers and visitors from around the world.

📍 463 Old Taupō Road, Rotorua
☎ (07) 346 3140

✉ info@rotoruatthermal.co.nz
🌐 rotoruatthermal.co.nz



REGENT OF ROTORUA

Escape ordinary. For that romantic retreat, or an adventure for the family, Regent of Rotorua is an urban oasis, a sanctuary in the city, offering a restorative, rejuvenating experience.



STAY

In luxury at the Regent of Rotorua – the epitome of chic accommodation in the city. Indulge in a stay in one of the 47 beautifully designed boutique hotel rooms, catering for the solo traveller, business traveller, couples and families on holiday.



DINE

At the hip and stylish Regent Room Restaurant & Bar and indulge in a range of contemporary New Zealand cuisine. Offering breakfast, lunch, high tea, dinner; including a degustation menu and a plant-focused option, sharing plates and tapas to enjoy poolside or fireside.



UNWIND

In the thermally heated swimming pool, soak away any worries in our indoor mineral pool drawn from deep underground, relax after a day mountain biking and use our bike cleaning and secure storage areas.

📍 1191 Pukaki Street, Rotorua
☎ 0508 734 368

✉ info@regentrotorua.co.nz
🌐 regentrotorua.co.nz



MILLENNIUM HOTEL ROTORUA

A firm favourite, Millennium Hotel Rotorua is situated central city, adjacent to Polynesian Spa, and the perfect location from which to start a day of adventure, exploring and soaking in the sights.

With a fresh, modern look, and unique local flourishes, we are excited to showcase our new rooms and refreshed guest areas. Every feature is carefully created with a purpose and a story, representing our incredible city and its rich history.

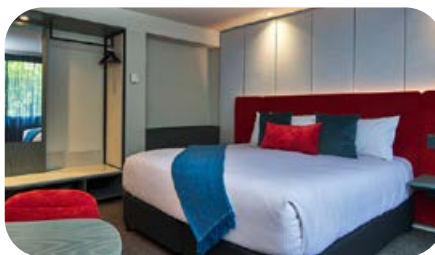
Our commitment to providing a premium guest experience drives us to keep our hotel up-to-date and stylish. The refurbishment allows us to refresh our look and incorporate modern amenities that we know our guests will love.

The hotel boasts facilities for all, with a geothermally heated all-weather swimming pool, and peaceful adults-only Day Spa featuring hot pools and indulgent beauty and massage therapies.

Begin your day at Poolside Brasserie Restaurant offering a sumptuous selection of breakfast eats, and espresso coffee bar.

Meet at Bar Zazu to sip and savour an end-of-day favourite. Small plates satisfy pre-dinner hunger pangs.

Linger over dinner in Restaurant Nikau, choose from Chef's enticing menu of fresh local produce.



📍 1270 Hinemaru Street, Rotorua
☎ (07) 347 1234 or 0800 654 685

✉ millennium.rotorua@millenniumhotels.co.nz
🌐 millenniumrotorua.co.nz



HANA LODGE BOUTIQUE HOTEL

Discover serenity at Hana Lodge, nestled in the hills of Rotorua. Embrace tranquility in a lush 15-acre park just 15 minutes from the city centre. Unwind in a haven surrounded by nature, offering an idyllic escape for leisure and business travellers alike.



Escape to Hana Lodge, an enchanting retreat in Hamurana, Rotorua. Embraced by nature, our 15-acre park offers a peaceful sanctuary just a short drive from key attractions. Immerse yourself in Rotorua's Māori culture, explore geothermal parks, and indulge in adventure activities.

Whether you are here for business or leisure,



our complimentary Wi-Fi, tennis court, swimming pool, dual spa pools and sauna facilities are just a few of the many amenities that make your stay truly exceptional. Wander our grounds adorned with world-class sculptures and savour modern New Zealand cuisine in our lake-view restaurant.

Perfect for small meetings, weddings, or



corporate retreats, we tailor experiences for lasting memories. Experience boutique lakeside living with chocolates on arrival, adventure activities, and luxurious day spa options.

Book now and escape to the tranquility of Hana Lodge, where every moment is a celebration of nature and relaxation.

📍 415 Hamurana Road, Ngongotahā, Rotorua
☎ (07) 332 2222

✉ info@hanalodge.co.nz
🌐 hanalodge.co.nz



NEWINA ROTORUA

Executive accommodation and conference facilities.



Rotorua's newest accommodation complex opened in 2023.

Centrally located on the main arterial route from Auckland. A handy five-minute drive to the famous Skyline gondola and luge park, and five-minute drive to the city centre.



- ❖ 40 accommodation units ranging from executive king and twin queen rooms.
- ❖ Premium king and twin queen rooms with own private pool.
- ❖ Executive 1-bedroom and premium 1-bedroom suites with own private pool.
- ❖ Executive 2-bedroom family units and



- ❖ premium 2-bedroom suites with own private pool.
- ❖ Outdoor heated pool, gym, sauna, conference and restaurant.
- ❖ Free unlimited Wi-Fi.

📍 3 Bidois Road, Rotorua
☎ (07) 348 9276

✉ admin@newina.co.nz
🌐 newina.co.nz





PRINCE'S GATE HOTEL

This 1897 heritage hotel is beautifully preserved and provides modern guest amenities while retaining its original charm and characteristics.

With a range of individually styled rooms, thermally heated pools and sauna, and Duke's Restaurant & Bar onsite, your stay at Prince's Gate Hotel will be one to remember. Try our delicious High Tea or a local wine. Relax with complimentary Wi-Fi in your room.

Situated at the entrance of the Government Gardens, the hotel is walking distance to the city centre, lakefront, Eat Street, and thermal pools, making it the ideal accommodation for any occasion.

📍 1057 Arawa Street, Rotorua
☎ (07) 348 1179
✉ info@princesgate.co.nz
🌐 princesgate.co.nz



BLACK SWAN HOTEL

Escape to luxury at Black Swan Lakeside Hotel, perched on the shores of Lake Rotorua.

Black Swan Lakeside Hotel offers a boutique accommodation experience with panoramic views of Lake Rotorua. Set in Victorian-style gardens, our boutique hotel features eight stylish rooms, gas fireplaces, and designer amenities. Indulge in a fine-dining

experience savouring local cuisine overlooking the lake or relax in the secret grotto with dual spas or swim in the pool. Rooms offer Wi-Fi, Smart TVs, Nespresso coffee makers, and complimentary breakfast. Host events with our versatile meeting space and catering options.

📍 71 Kawaha Point Road, Rotorua
☎ (07) 346 3602
✉ info@blackswanhotel.co.nz
🌐 blackswanhotel.co.nz



ROTORUA BLUE LAKE TOP 10 HOLIDAY PARK

The perfect destination for an escape, boasting stunning views of Lake Tikitapu.

We offer different accommodation styles to suit any sized group or budget, from lake-view motels, to standard cabins and powered sites – all in the perfect location to take advantage of Rotorua's 18 beautiful lakes. Just across the road from Lake Tikitapu and a short five-minute drive to Lakes Ōkāreka

and Tarawera. Close proximity to the city and attractions, come and enjoy water activities galore, Redwoods' walking and mountain bike trails, and explore surrounding native bush and walks around the lake.

📍 723 Tarawera Road, Rotorua
☎ 0800 808 292
✉ info@bluelaketop10.co.nz
🌐 rotoruaabluelaketop10.co.nz



VR ROTORUA LAKE RESORT

Set on six acres on the shores of the beautiful Lake Rotoiti.

Located just 15 minutes' drive from central Rotorua, VR Rotorua Lake Resort features an outdoor pool, sauna, and tennis courts. Guests enjoy free unlimited Wi-Fi.

All rooms feature a private balcony or patio offering either stunning views over Okawa Bay

or the surrounding gardens. Each includes satellite TV, tea and coffee making facilities. The Grill Restaurant is open for breakfast, lunch and dinner and serves modern New Zealand cuisine.

For more information, please visit vrrotorua.co.nz.

📍 366 State Highway 33, Mourea, Rotorua
☎ (07) 362 4599
✉ rotorua.reservations@vrhotels.co.nz
🌐 vrrotorua.co.nz



PIG & WHISTLE HISTORIC PUB

Join us for Pub Classic Meals | 15 New Zealand Craft Beer & Ciders on Tap | Cocktail Menu
Happy Hour | Live Music - Saturday | Function Room | Thursday Quiz Night



The Pig & Whistle Historic Pub provides a warm welcome in a landmark Rotorua building. Once serving as the Rotorua Police Station from the 1940s, it's steeped in local history and provides plenty of talking points for regulars and visitors.

Relax in one of our cosy booths or enjoy fireside dining in our covered Garden Bar.



Our Winter Menu includes classics like New Zealand Lamb Shanks, Fish & Chips, beer battered or pan-fried with pigtail fries, Slow Cooked Brisket and our New Zealand Lamb Burger.

The menu also offers a vast selection of vegetarian, gluten-free and vegan offerings to meet your nutritional needs.



Our drinks menu boasts 15 craft beer + ciders on tap, along with an extensive collection of New Zealand artisan gin, wine and cocktails.

Bookings via our website and walk-ins are welcome.

Open 11.30am till late, 7 days.

📍 1182 Tutaneke Street, Rotorua
☎ (07) 347 3025

✉ hello@pigandwhistle.co.nz
🌐 pigandwhistle.co.nz



CAPERS CAFÉ + STORE

Voted Rotorua's Best Eggs Benedict 2024 | People's Choice Winner 2024 Great New Zealand Toastie Takeover + Finalist
All Day Breakfast Menu | Lunch + Dinner Menu | Kids Menu | Salad Cabinet | Coffee + Cake | Daily Happy Hour



Capers Café + Store has been part of the Rotorua café scene for over 22 years, delivering delicious seasonal dishes made with fresh ingredients from local suppliers, reflecting our commitment to our community.

Choose from our All Day Breakfast Menu, featuring our award-winning Eggs Benedict made with local Otaika Valley free range eggs.



Cabinets filled with a selection of sandwiches, wraps, salads + sweet treats perfect to enjoy in the café or takeaway. Our Lunch + Dinner Menu is available daily from 10.30am till close with gluten free, vegetarian and vegan options available.



Our Organico New Zealand blend of Fairtrade organic coffee is served with your choice of plant-based milk or organic A2 milk from Volcanic Creamery. Join us for Happy Hour on selected beer, wine + Rotorua Distillery Gin, 4.00pm - 6.00pm, 7 days.

Open 7 days, 7.00am - 7.00pm.

📍 1181 Eruera Street, Rotorua
☎ (07) 348 8818

✉ hello@capers.co.nz
🌐 capers.co.nz

capers café
+ store



Enjoy a taste of Rotorua

during your stay and beyond with
Volcanic Hills Wine.

Our wine is made locally in Rotorua, using
grapes from the best wine growing
regions across New Zealand.

Visit us for tastings and wine sales at
Skyline Rotorua. Ask for Volcanic Hills in
restaurants and hotels around town, or
buy online to enjoy at home.

www.volcanichills.co.nz

LIME CAFÉ

Bright and lively spot near Rotorua's lakefront, offering an array of fresh flavours from our cabinet selections, specials board, and tempting breakfast and lunch menus. With communal tables and extensive outdoor seating basking in the summer sun, Lime Café creates a welcoming, friendly atmosphere perfect for any occasion.

Nestled near Rotorua's stunning lakefront, Lime Café has become a beloved spot for locals and visitors alike. Known for its bright, welcoming atmosphere and contemporary cuisine, Lime Café offers a delightful menu that caters to all tastes. Whether you're in the mood for a classic breakfast or a modern lunch twist, dishes like the French Toast, Spicy Boston Beans, and Thai Risotto promise fresh, flavourful experiences.

Complementing the menu is a reputation for exceptional barista-crafted coffee, brewed from locally sourced beans. The café also boasts a well-stocked cabinet filled with savoury and sweet treats, perfect for any quick bite or leisurely visit.

With ample indoor seating and a sun-drenched outdoor area, Lime Café provides a relaxing, vibrant ambiance for any occasion. Fully licensed and open daily, it's the ideal spot to enjoy great food, excellent service, and the beauty of Rotorua's lakeside setting.



BOASTERS COFFEE HOUSE & ROASTERY

An urban roastery with in-house café serving espresso style coffee and delicious cabinet food.
A relaxed and comfortable space for locals and visitors alike.



As a local artisan roastery, our coffee is freshly roasted onsite using 100% Arabica beans. We blend crafted roasts that are proudly served at our coffee house café or supplied to our many partnered locations.



An inviting space to be shared with the Rotorua community, Boasters is a relaxed option for a convenient coffee to go, or to sit and take a moment to enjoy with some delights from the ever-changing food cabinet.



A skilled team of hospitality professionals work effortlessly to ensure you feel like one of the Boasters' family while you catch up with friends or perhaps grab a book from the free exchange and let the day pass by.

Ordering App: **REGULR**

📍 1180 Haupapa Street, Rotorua
☎ 021 345 269

✉ hello@boasters.co.nz
🌐 boasters.co.nz

Boasters
COFFEE ROASTERS

GOOD EASTERN TAPHOUSE

With a love of great food, great beer and a passion for the outdoors, the Good Eastern Taphouse was born.
In the mountain biking mecca of NZ and just a short drive from some of the best lakes in the area.

Craving fresh, local flavours and good company? Head east to The Good Eastern Taphouse! We're your one-stop shop for delicious food, refreshing drinks, and good times.

Whether you're looking to refuel after conquering the Whakarewarewa Redwoods Forest (just a five-minute walk away!), unwind with a cheeky wine night with friends, or enjoy a relaxed family meal, we've got you covered. Our menu boasts mouthwatering, made-from-scratch dishes and we proudly support local Rotorua businesses with our fresh ingredients.

Can't stay for a sit-down meal? No problem! We offer a wide selection of Good George beers, ciders, and cocktails on tap, along with bottles you can take away.

So come on down, bring your furry friend (our dog-friendly courtyard awaits!), and let the good times roll at The Good Eastern Taphouse!

good beer + good food + good friends

Book online at goodeastern.nz



📍 279 Te Ngae Road, Lynmore, Rotorua
☎ (07) 345 4476

✉ admin@goodeastern.nz
🌐 goodeastern.nz

GOOD EASTERN
TAPHOUSE



PANTRY D'OR

We are constantly creating and exploring the vast and ample world of baking. We extend ourselves in baking bread, pastries, desserts, cookies and cakes.

Pantry d'Or Boutique Bakery offers a charming and inviting atmosphere, perfect for enjoying a delightful array of freshly baked goods. Indulge in our rich artisan pastries, custom cakes, and hand-crafted bread, all made with locally sourced ingredients.

Whether you're in the mood for a specialty coffee, a leisurely treat, or a quick bite, our cosy indoor seating provides the ideal spot to relax and savour the moment.

📍 201 Ranolf Street, Rotorua
 ☎ (07) 347 0231
 ✉ orders@pantrydor.co.nz
 🌐 pantrydor.co.nz



RESTAURANT & BAR

STRATOSFARE

SKYLINE ROTORUA

Rotorua's Premium Dining Experience

Book now at **skyline.co.nz**

A Te Reo Māori Circus Theatre Epic

Te Tangi a te Tūi

by Amber Curreen & Tainui Tukiwaho

10-11 August, 2025

Sir Howard Morrison Centre, Rotorua

"visually and emotionally powerful"
 - Stir Vancouver



Trust Rotorua i site Visitor Information Centres for all your travel advice and bookings



i The best prices
for activities and
accommodation

i Quality
assurance on all
accommodation
we book

i Caring and
knowledgeable
local staff

i Three locations
to serve you



**See us for free, reliable, friendly and
expert advice and booking services
for all your activity, accommodation
and transport needs in Rotorua and
all of New Zealand.**



07 348 5179 | info@rotoruaNZ.com | rotoruanz.com
1167 Fenton Street | Redwoods Forest | Waipa MTB Hub

GO ON A ROBE TRIP TO ROTORUA.^{RT}



Spend a plush long weekend with your partner.
Book your Robe Trip today at RotoruaNZ.com



DRACULA'S



Sanctuary

LIVE SHOWS COMING TO ROTORUA ON 4, 5 & 6 JULY.

INFO & TICKETS AT DRACULAS.CO.NZ