

ROTORUA

AUTUMN/WINTER 24

OKERE
FALLS
STORE

YOUR GUIDE TO ROTORUA

COSY CULINARY DELIGHTS

EXPLORING THE HEART
OF MĀORI TOURISM

MEET OUR HOSPO HEROES

TAILORED JOURNEYS FOR
FAMILIES, COUPLES, SOLOS



XTERRA ROTORUA FESTIVAL

6 April 2024

Since its inception, this event has grown to become one of the best XTERRA events in the world. Nine events of various lengths, set in and around Lake Tikitapu and Whakarewarewa Forest, encourage athletes of all fitness levels and abilities to participate in trail walking or running, mountain biking, duathlons or triathlons.

xterra.co.nz



COSTUMIERS FANTASY MASQUERADE BALL

1-13 July 2024

Inspired by fantasy masquerades and hotel-based conventions abroad, CNZ Wild Adventures presents their annual Costumiers Fantasy Masquerade Ball weekend. Think cosplay, steampunk, larp, medieval, costumiers, designers, etc., and a weekend full of glorious costumes, music, socialising, food and drinks. Get in quick as the events are selling out.

cnzwildadventures.com



ROTORUA MARATHON & RED STAG HALF MARATHON

3-4 May 2024

New Zealand's most iconic marathon celebrates 60 years! The weekend features four events that take runners through our hidden gems, surreal scenery and stunning natural wonders. Events include the full marathon around Lake Rotorua nicknamed "Take the Lake", the Red Stag Timber off-road half marathon, a 10km, and a 5.5km run or walk, offering a distance for everyone.

rotoruarun.co.nz



ARONUI INDIGENOUS ARTS FESTIVAL

12-22 September 2024

The annual ARONUI Indigenous Arts Festival is a bold and explosive celebration of award-winning indigenous artists showcased via a range of art forms including theatre, writers talks, and more. With ticketed and free events, there's something for everyone, including music, art exhibits, dance, market, workshops, and so much more.

aronuiartsfestival.com

KIA ORA & WELCOME

Nau mai, haere mai ki Te Rotoruanui-ā-Kahumatamomoe!

Whether you're a seasoned adventurer or looking to uncover local gems, this edition of the Rotorua Magazine is your guide to making the most of Aotearoa, New Zealand's, cooler months.

In this issue, we feature our Māori cultural experiences that offer a window into the practices, beliefs and community spirit that form the backbone of New Zealand's indigenous heritage. We take you through living traditions and the remarkable geothermal landscapes that have nurtured a profound connection to the land for generations.

We also feature our foodies and Rotorua's autumn and winter delights from the slopes of Mt Ngongotahā at Volcanic Hills Winery to the comforting bowls of Spa City Noodle Bar. You'll be pleasantly surprised at what you can uncover tucked away in different parts of our city. The Okere Falls Store featured on our front cover is the oasis you never knew you needed after a day of exploring our unique natural landscapes.

For those seeking a bespoke blend of culture, adventure and relaxation, we spotlight experiences that can only be found in our corner of the world. Join us at Te Puia for a Matariki celebration that connects past, present, and future, or immerse yourself in the healing waters and serene beauty of Polynesian Spa.

So, whether you're planning a weekend getaway or seeking inspiration for your next local adventure, let this issue be your compass.

We look forward to seeing you!

2
4

WHAT'S ON

A CULINARY
JOURNEY
THROUGH
ROTORUA'S
AUTUMN AND
WINTER DELIGHTS

6

RETAIL RESCUE
IN ROTORUA

7

RIDING HIGH:
THE INSPIRING
TALE OF
TUHOTO-ARIKI PENE

8

EXPERIENCE
MĀORI CULTURE
IN ROTORUA

10

OUR HOSPITALITY
HEROES

14

COSY ITINERARIES
FOR FAMILIES,
COUPLES AND
SOLO TRAVELLERS



If you'd like to be among the first to know what's new and amazing in Rotorua, scan the code to sign up to our quarterly e-newsletter.

Cover: Local favourite Okere Falls Store has been serving up artisan dishes, cold beers and more for two decades.



WHAT'S ON in Rotorua?



GIANT 2W GRAVITY ENDURO ▲

20 APRIL 2024

New Zealand's premier enduro 2023/24 series in the world-renowned Whakarewarewa Forest. Rotorua Mountain Bike Club invites you to come ride at your pace as an individual or socially with your mates; catch shuttle buses to the tops of the hills if you don't feel like riding up.



2w.co.nz/



HIGHLANDER MTB CHALLENGE ▲

19 MAY 2024

The Highlander MTB Challenge mountain bike race returns. Two different course lengths, 20 and 45km, means you can pick the challenge, safe in the knowledge you'll be blasting grin-inducing trails, with like-minded people.



highlandermtb.co.nz



MINDFUL MOMENTS RETREAT ▲

18-19 MAY 2024

Experience harmonious balance at our Mindful Moments Retreat. Over two enriching days, delve into a wealth of lifelong wisdom and essential tools for nurturing a healthier life. Our experts will offer personalised guidance to enhance your daily routines, through their tailored wellness sessions, guided meditation practices, and indulgent spa treatments. Surrender to the soothing embrace of nature's healing energy within our thermal waters and embark on a profound journey of self-discovery and mindfulness. Secure your place for a soul-nourishing experience that revitalises your spirit. Check our other available dates.

polynesianspa.co.nz





MATARIKI AT TE PUIA ▲

28 JUNE 2024

Join us for a 4:30 – 6:30am Hautapu ceremony led by ngā tohunga Te Waata Cribb and Te Rāngai Kawa. The ceremony symbolises past, present, and future, connecting us to the natural rhythms of te taiao (environment). From 9am – 3pm there's a festival for all the whānau on our Rotowhio marae-atea. It includes scenic train rides to see Pōhutu Geyser, kai relating to the whetū (stars), tītī tōrea, poi and haka lessons, Matariki seminars, a pohiri and cultural performances, Matariki taonga market, NZMACI carving and weaving demonstrations, bouncy castle fun and face painting. Tickets sold on Eventbrite.

tepuia.com



SUNNTO RUN THE FOREST ▲

10 AUGUST 2024

Three distances, run party vibes, and Rotorua's unique geothermal and Redwoods Forest trails. Get the crew together and sign up for the coolest thing you'll do this winter.



WEEKLY  Rotorua Night Market

Thursdays, 4:30-8:30pm,
Tutanekai Street. Food & boutique shopping.

Event dates were correct at the time of printing but it always pays to double-check before you go.

facebook.com/RuntheforestNZ



A CULINARY JOURNEY

through Rotorua's autumn and winter delights

As the cooler autumn days approach, there's no better time to explore Rotorua's cosy and inviting eateries.

The city, known for its geothermal wonders, Māori culture and incredible natural scenery, is also a haven for culinary enthusiasts seeking warmth and comfort during the cooler months. Join us on a gastronomic journey through some of the city's most delightful dining establishments, each offering a unique blend of flavours and ambience that captures the essence of autumn and winter.

Our first stop is the Volcanic Hills Winery, perched on the slopes of Mt Ngongotahā. The winery not only boasts breath-taking views of the city and Lake Rotorua but also serves as a haven for wine connoisseurs seeking a cosy spot to unwind. Indulge in a tasting flight featuring their renowned Sauvignon Blanc and Pinot Noir, perfectly complemented by a platter of local cheeses and charcuterie.



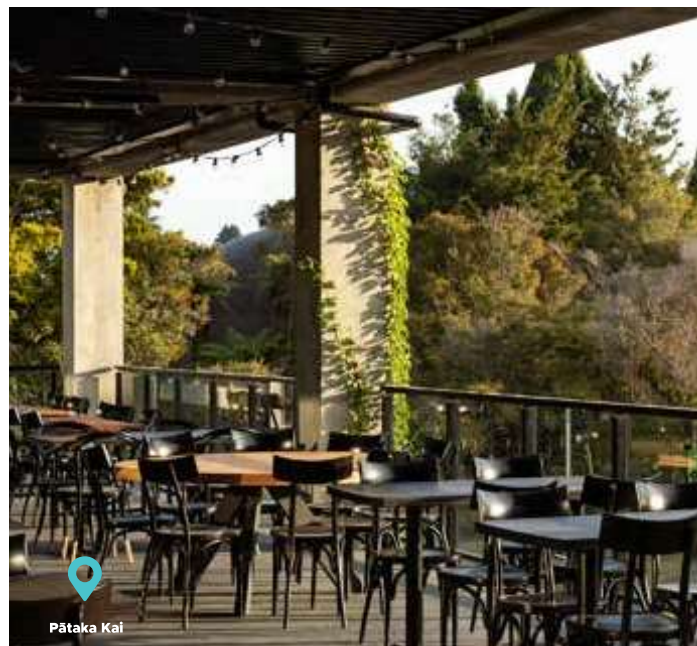
Following your wine-tasting experience, you might find a hearty appetite has consumed you. This is a very easy problem to sort quickly by walking over to Stratosfare Restaurant and Bar also perched atop Mt Ngongotahā at Skyline Rotorua. Similar to the winery, Stratosfare offers floor-to-ceiling windows framing the stunning landscape outside. The buffet at Stratosfare is world-famous for its diverse selection of dishes, from succulent meats to fresh seafood, salads, soups, desserts and more, all showcasing the best of New Zealand's produce.

For those craving the comforting allure of Asian cuisine, the brand-new Spa City Noodle Bar beckons with its aromatic broths and vibrant flavours. Tucked into the heart of Rotorua, this noodle bar is a gem offering a respite from chilly weather. Step inside to the inviting aroma of simmering soups and savoury spices and grab a table or take a seat at the bar overlooking the kitchen. An array of noodle dishes, from traditional ramen to spicy Thai soups, provide a symphony of tastes sure to warm you up.

The Fainting Goat, nestled in the heart of Rotorua's dining district, offers a great escape. A cosy industrial vibe and comfy seating welcome you to select from the tapas style dishes, shared boards, gourmet pizzas by the foot, and sweets and cheeses. Pair your meal with a craft beer, glass of wine or signature cocktail, and let The Fainting Goat wrap you in a culinary embrace.



The Fainting Goat



Pātaka Kai

For a taste of indigenous Māori cuisine with a view of the Southern Hemisphere's largest active geyser, Pātaka Kai is the destination of choice. Located within the Te Puia cultural complex, this buffet restaurant showcases the unique flavours and culinary traditions of the Māori people. The menu features dishes such as hāngī-cooked meats, rewana bread, and kawakawa-infused desserts. Pātaka Kai offers not only a culinary experience but also a connection to the rich heritage of the region, making it a truly special dining destination in Rotorua.

Last but far from least, be sure to book in for a special dinner at The Mains at On the Point. Nestled along the edge of Lake Rotorua, The Mains is a charming restaurant that captures the essence of autumn and winter with its inviting atmosphere. The expansive windows frame breathtaking views of the lake, creating a serene backdrop for your dining experience. The menu at The Mains features a blend of New Zealand and international flavours, with a focus on fresh, seasonal ingredients. From seafood platters to slow-cooked meats, each dish is a celebration of the region's culinary diversity. The Mains provides a perfect setting for a romantic dinner or a gathering with loved ones, where the beauty of the lake and the warmth of the interior combine to create a memorable dining experience. ❖

Stratosfare
Restaurant & Bar

Brew, located on Eat Street near the shores of Lake Rotorua, offers a laid-back and inviting atmosphere for those seeking a casual dining experience. The rustic charm of exposed brick walls and wooden furnishings add to the warmth of the venue. Brew's menu is a fusion of international flavours, with a focus on locally sourced ingredients. From wood-fired pizzas to hearty burgers, each dish is crafted with care, making Brew a go-to spot for a relaxed meal with friends and family during the colder months.



Brew



RETAIL RESCUE IN ROTORUA

A shopper's guide to local gems



Curiosity Blooms

Rotorua is a haven for those seeking unique and delightful treasures, offering a variety of shops catering to different tastes and interests.

CURIOSITY BLOOMS

This eclectic shop (pictured above) features everything for the home: décor, houseplants, accessories, and unique artisan creations, including quirky taxidermy.



AHU BOUTIQUE

Ahu Boutique, by fashion designer Adrienne Whitewood, incorporates Māori cultural flair into beautifully elegant garments and accessories.



MOUNTAIN JADE

For authentic pounamu (greenstone), Mountain Jade – as well as Puawai Jade and Āhua Gallery – offer stunning jewellery and carvings.



JUNIPER ART + HOME

A gorgeous shop offering a mix of home decor, florals, plants, jewellery, and a working art studio.



AMOKURA GLASS

Owner-creator Heather Kremen creates colourful, high-quality blown glass items.



ROTORUA ANTIQUES AND COLLECTABLES

The best place to find treasures from around the world spanning pre-Colonial times to the late 20th century.



EXOTIC IMPORTS

Decorate with boho and industrial imports from Mexico, India and Morocco from quilts and tableware to furniture and more. ❖

RIDING HIGH

The inspiring tale of Tuhoto-Ariki Pene, Crankworx royalty and hometown hero

In the realm of professional sporting, where adrenaline often breeds cockiness, Tuhoto-Ariki Pene stands as one of the exceptions.

Crowned the King of Crankworx at the youthful age of 22, Tuhoto-Ariki conquered elite riders since his junior years, solidifying his status as a household name in the mountain biking community.

Yet, behind the accolades and victories, Tuhoto-Ariki exudes a refreshing humility. Described as kind and supportive, he channels his success into giving back to his community. Particularly passionate about nurturing young riders following in his tyre tracks, he embraces the role of a mentor. For him, it's not just about racing; it's about being a chill dude on a bike, inspiring others to find joy in the thrill of the ride.

Surrounded by the right people, Tuhoto-Ariki navigates challenges with grace and skill, staying true to the Māori traditions and values instilled in him while growing up. Whether hurtling down race circuits or relaxing at home with his whānau, these values remain a guiding force.

Home, for Tuhoto-Ariki, is Rotorua and where his love for biking blossomed. Starting at the age of 3, he transitioned from BMX to downhill riding, exploring the world-famous trails of Whakarewarewa Forest. With a whakapapa tied to Tūhourangi, he connects with his Māori tūpuna, feeling their presence in the forest, especially on the Tuhoto-Ariki trail named after one of his revered ancestors.

Winning the Val di Sole round on the challenging Black Snake trail during his junior years, and dominating both the Junior and Elite categories at the Oceania Downhill champs showcased his prowess. Yet, when asked about career highlights, he emphasises the joy of meeting people and sharing his culture, highlighting the essence of his journey.

Beyond the competitive arena, Tuhoto-Ariki's impact extends to the community. Devoted to giving back, he spends time with rangatahi, answering questions, and riding alongside them. Recognising the importance of encouraging youth to explore mountain biking, he sets an inspiring example, proving that the journey is as significant as the destination. ❖





EXPERIENCE MĀORI CULTURE in Rotorua like no other place

Here in Rotorua lies a rich tapestry of culture that
has been woven over centuries.

Te Arawa Māori, with their deep-rooted tikanga (traditions), spiritual beliefs, and vibrant cultural practices, have shaped Rotorua's unique identity, creating an enviable place to live, work and play. Over the years, Māori cultural tourism has evolved significantly, offering a bridge for visitors from around the globe to connect with the authentic essence of Māori heritage.

The origins of Māori cultural tourism trace back to the early interactions between Māori communities and European settlers. Initially, these encounters were based on trade and mutual curiosity. As Rotorua became a popular destination for international travellers in the late 19th and early 20th centuries, Te Arawa iwi began to share their culture more formally with manuhiri (visitors). This included marae visits, traditional performances, carvings, and storytelling, laying the foundation for what would become a thriving cultural tourism sector.

One of the earliest and most iconic examples of Māori cultural tourism is the Pink and White Terraces, once considered the eighth wonder of the world before their destruction in the 1886 Mt Tarawera eruption.

The surrounding areas, including what is now the Buried Village, became sites of significant cultural exchange and learning, as Māori guides led visitors through the remnants and shared stories of their ancestors.

Today, Māori cultural tourism in Rotorua is a vibrant and essential part of Aotearoa's tourism industry, offering a wide range of experiences that allow visitors to learn about and immerse themselves in the Māori way of life. Some of the most notable experiences include:

Buried Village of Te Wairoa: This site offers a poignant glimpse into the past, showcasing the effects of the Mt Tarawera eruption on the local Māori community. Visitors can explore the excavated remains of the village, participate in guided tours, and learn about the resilience of the Māori people in the face of natural disasters.

Te Pā Tū: This immersive experience transports visitors back in time to a pre-European Māori village. The evening includes traditional ceremonies, performances, and a hāngī feast cooked in an earth oven.



Māori cultural performers at Te Puia

Whakarewarewa Living Māori Village: This living village offers an authentic experience of Māori daily life. Visitors can witness traditional cooking methods using natural geothermal features, enjoy cultural performances, and learn about the significance of geothermal activity in Māori culture.



Whakarewarewa
Living Māori Village

Te Puia: Renowned for its geothermal wonders – including the largest active geyser in the Southern Hemisphere – and the New Zealand Māori Arts and Crafts Institute. Here, visitors can see master carvers and weavers at work, explore the geothermal valley, and experience the powerful Pōhutu Geyser.

Wai Ariki Hot Springs and Spa: Leveraging the geothermal riches of the land, this spa offers a unique wellness experience grounded in Māori healing traditions. It combines the therapeutic properties of mineral-rich waters with traditional Māori massage and herbal remedies.

With a growing emphasis on sustainability and genuine cultural exchange, Māori operators in Rotorua are leading the way in creating experiences that not only educate and entertain but also preserve and promote Māori culture for future generations. This involves careful stewardship of the land and resources, as well as ensuring that the benefits of tourism are shared within Māori communities.

Māori cultural tourism in Rotorua invites visitors to not just observe but to participate in a living culture that is deeply connected to the land and its ancestors. Through these experiences, visitors gain a deeper appreciation for the Māori way of life and the values of respect, hospitality and kinship that define it. And, as the world becomes increasingly globalised, the unique offerings of Māori cultural tourism provide a beacon of authenticity and connection in a fast-paced world. ❖

THE PEOPLE BEHIND THE PLACES

Meet Rotorua's hospitality heroes



Poco Tapas & Wine

Words & photos by Neat Places

What separates a good restaurant or café from a great one are the people behind the counter or in the kitchen. Hospitality staff are the keys to bringing a venue to life, and Rotorua has no shortage of hospitality heroes.

This Neat Places feature includes just a few of our hospo heroes. For the full list, please visit <https://neatplaces.co.nz/places/rotorua>



LORISSE VINCENT-AMOR FROM ANI'S GIN BAR & TAPAS

Founder Loris Vincent-Amor is the heart and soul of ANI's Gin Bar & Tapas. Loris developed her love of food from a young age, eventually pursuing a formal culinary education that took her overseas to hone her skills.

Upon returning to New Zealand, she opened ANI's – which is named after her late mother – in 2022. The menu of modernised Māori kai is inspired by Loris's nostalgia for the flavours of her childhood. Many of the dishes feature

native botanicals such as kawakawa or horopito, and those notes are echoed throughout the bar's extensive gin collection. Loris's expertise really shines in the gin space, and from behind the bar, she is happy to walk diners through the options of made-in-New Zealand spirits to craft their perfect drink.



GREG THOMAS OF OKERE FALLS STORE

Greg Thomas is one half of the duo at the cult favourite Okere Falls Store, which is run out of a lovingly and sustainably refurbished petrol station just off the state highway. Greg has been coming to Okere Falls since the 1980s and purchased his first box of beer from the venue when it was still a petrol station.



Greg and his wife and business partner, Rachael, have been at the helm since 2021 and view themselves as the kaitiaki (stewards) of the Store. They have taken that mindfulness and care into everything from how they treat customers to the brews they stock in the fridges and the expansive menu of all-day brunchy classics – including some pretty spectacular toasties. But if you're Greg, the go-to means a good set of poached eggs with streaky bacon with a tasty long black, sitting on the front deck in the sun watching the world go by.



IRIHEI WALKER OF TE PĀ TŪ

Te Pā Tū is a celebration of Māori culture – history, traditions, aspirations and kai. Over four hours, you'll celebrate with an immersive seasonal banquet aligned to the maramataka (Māori lunar calendar). Each year Te Pā Tū collaborates with a different Māori chef, inviting them to personalise the menu and offerings and highlight the breadth and depth of the lived experiences of the culinary team.

Executive chef Irihei Walker (Ngāi Tūhoe, Te Arawa, Ngāti Kahungunu) brings more than 20 years of experience, having developed a love of cooking from his mother and grandmother, then training abroad and honing his skills at fine-dining establishments in Australia before returning to his native Rotorua. The pull of te ao Māori brought him to Te Pā Tū, where he curates a story with exquisite kai (food). Expect delicacies like pāua, pickled pikopiko or ika mata (ceviche), and larger dishes such as confit duck leg brined for 24 hours in star anise, cinnamon and rock salt.



TUTA DAVOREN FROM POCO TAPAS & WINE

Poco Tapas & Wine is an open, inviting space with plenty of natural light, an attractive counter bar and attention to detail – not least of which is the sharing-style menu and the extensive wine list. Tuta Davoren has been the sous chef at Poco since it opened two years ago and brings his 20-

plus years of international experience and passion for fine dining to the seasonal menu. An all-rounder in the kitchen, you can find him baking, preparing entrees or mains, or creatively plating desserts. Go with the Chef's Menu to get the best of what Tuta brings to the table, including one of his favourites, the prawns and flatbread.



BOB BELL AT BOOSTERS COFFEE ROASTERS

Coffee has always been one of owner-roaster Bob Bell's passions. At family-owned Boosters Coffee Roasters, beans are lovingly roasted on a classic and timeless 15-kilogram Toper Roaster, and the shop's Original Roast is a nutty, medium-dark brew with notes of berry shining through. Bob and his wife, Rachael, have anchored the community behind each cuppa with a little lending library in-store and active presence at events around the Bay of Plenty. On top of their dedication to constant improvement, Bob and Rachael are also keenly aware of coffee's impact on the environment and strive to reduce their footprint wherever possible.



CLAUDIA KNIGHT FROM EASTWOOD CAFÉ

Plenty Group's operations and events manager, Claudia Knight, was instrumental in opening Eastwood Café's doors in 2020. Located on the ground floor of the Scion Research Centre, wood is the star of the space, with the minimalist design and exposed wooden beams a nod to Scion's forestry connections. Leveraging her 15 years of hospitality experience, Claudia's specialty is operations and logistics – problem-solving on the fly to ensure each customer has a fantastic experience. From the menu, she recommends the Green Bowl, which is heaped with seasonal greens, squeaky-salty halloumi, za'atar avocado and runny poached egg, and the wood-fired pizzas, Eastwood's specialty. ❖



COSY WINTER

itineraries for solo travellers, couples and families



Waimangu Volcanic Valley

With another hot summer done and dusted, why not plan a cheeky little chilled-out weekend in Rotorua?

Autumn and winter are great times to travel – the temps are cooler for roadies, the busy tourist season is waning, and Mother Nature starts her colourful transformation. Rotorua's central location, natural playground, geothermal features and cultural attractions create the perfect getaway destination.

SOLO ADVENTURERS

You may arrive on your own, but you'll definitely leave Rotorua with more friends. Kiwis and travellers are great companions and here are some activities that foster connection and kinship.



Check into your accommodation at Jack's Hut, the most perfect little historic shepherd's hut you've ever seen. Take in the incredible views of Lake Tarawera from the porch swing or the outdoor tub.

Experience our stunning lakes district, vibrant geothermal reserves and remarkable volcanoes with one of Volcanic Air's heli or floatplane tours.

Enjoy a twilight glow worm tour with Paddle Board Rotorua. The combination of sunset paddle boarding and magical glow worm caves at night creates a truly unique experience. Wetsuits and water shoes are provided to keep you warm.



Paddle Board Rotorua



Start your day flying through an ancient native forest canopy on a network of ziplines, traversing swing bridges, and maintaining your balance along a 50-metre high cliff walk with Rotorua Canopy Tours, voted the World's Best Nature Experience by Tripadvisor.



Wai Ariki Hot Springs & Spa

Book in for an indulgent Restorative Journey spa and hot pools experience at the new \$60 million Wai Ariki Hot Springs & Spa.

Finish your day with an amazing Māori cultural experience and delectable dinner at Te Pā Tū.



Before wrapping up your Rotorua holiday, a visit to our world-renowned Whakarewarewa Forest is a must. Several walking tracks from 2km and longer provide the perfect setting to unwind and refresh, take in the crisp, clean forest air, and wander among 75-metre-tall California redwoods and fern-filled understory.



A COUPLE'S TIME OUT

From high adventure activities to relaxing hot pools and Māori cultural experiences, Rotorua is a fantastic place to rejuvenate, relax and rekindle.



Check into your accommodation at Kokako Retreat. It's a bit remote but this bespoke, eco-friendly B&B is 100% worth it.

Starting with a coffee in one hand and your favourite person's hand in the other, enjoy a stroll along the beautiful Lake Ōkāreka boardwalk. It's just 12km from the city centre but you'll feel a world away in this beautiful, serene nature reserve.

Now that you've got the legs warmed up, why not hit dirt gold on Rotorua's world-renowned mountain biking trails? Head to Te Pūtake o Tawa carpark on Tarawera Road, hire an electric mountain bike and ride New Zealand's newest Great Ride, the 33km Whakarewarewa Forest Loop.



You've earned a relaxing treat so head over to Secret Spot Hot Tubs for a 45-minute soak in your own freshwater cedar hot tub (don't forget to try the cold plunge pools, too). While you're there, grab a smash burger and other street food options from the food truck.



Another activity to get the heart racing is whitewater rafting the world-famous Kaituna River. This awa offers everything from a gentle grade 2 scenic section, through to full-on grade 5 action featuring the world's highest commercially rafted waterfall.

Head to the Rotorua Lakefront for an adrenaline-infused 85km/hour jet boat ride with Katoa Jet.

When Te Puia guides sneak you in through a secret passage and down a dark tunnel, you'll feel like you've been given special back-stage access to this famous geothermal valley at night after the park has 'closed'. The amazing thing is that if you've visited during the day, the Geyser by Night tour will look and feel completely different.



Explore Whakarewarewa - The Living Māori Village, an authentic settlement where people live, using the natural geothermal resources to cook, bathe and heat their homes as they have for centuries. Experience the warmth and authenticity of guides who are direct descendants of the legacy guides who shaped the beginnings of the New Zealand tourism industry. Their insights, knowledge and legendary manaakitanga (hospitality) add depth and richness to your cultural journey.



FUN WITH YOUR WHĀNAU

Families have been making Rotorua their holiday destination for decades. There's just so many awesome activities for kids young and old to love.



Check into your accommodation. We suggest booking the family studio unit at Aura Accommodation, tucked away in a quiet street near the city centre.

Grab your swim gear and head to ZORB to zoom down the side of Mt Ngongotahā in a clear, giant, inflated ZORB ball can fit up to three people and you've got three crazy-fun tracks to choose from.

Head down the road a smidge to Skyline Rotorua where a gondola takes you up another part of Mt Ngongotahā. From up here, you can race each other down the mountain on five different Luge tracks through the forest, corkscrew turns and lighted tunnels. If you work up an appetite, Market Kitchen onsite has great options for lunch, including hand-scooped ice creams.

This evening, Redwoods Treewalk and Nightlights will immerse you in 75-metre-tall redwoods as you cross 23 eco-suspended bridges and platforms through the stunning natural environment.



Head about 20 minutes south of town to Waimangu Volcanic Valley for a self-guided tour of the fascinating geothermal features created by the 1886 eruption of Mt Tarawera. Add on Lake Rotomahana boat cruise to see even more volcanic activity from a unique perspective.



You're in the neighbourhood of Waikite Valley Thermal Pools, off the beaten path and set in a relaxing rural location. Here, several hot pools await, as well as Te Manaroa Spring Walkway and Eco-Trail to the largest single source of boiling water in New Zealand.

Watch, hear, feel and taste our Māori culture come to life at Mitai Māori Village through authentic live performances of songs, dances and games, including the fierce haka. Finish with an authentic hāngī dinner onsite.



Top off your awesome holiday with family favourites Agrodome and The National Kiwi Hatchery, which are now at the same location. ❖



POLYNESIAN SPA

Home to New Zealand's original and iconic geothermal bathing experience, Polynesian Spa offers a range of therapeutic hot springs, wellness activities, and treatments including massages, facials, and aromatherapy experiences, and has been a sanctuary for visitors for over 50 years - consistently nominated as one of the world's top spas.

Set on the tranquil shores of Lake Rotorua, visitors have been drawn to its healing properties since the 1800s when the first bathing houses were established, enticed by the invitation to 'come take the waters in Rotorua.'

Water from two natural springs feeds into 28 different mineral pools, making the most of the geothermal marvels in its backyard. The sulphate-rich acidic Priest Spring relieves tired muscles, aches, and pains, while the sodium-rich alkaline waters of the Rachel Spring nourish and rejuvenate the skin. The mineral pools encompass the Deluxe Lake Spa, Pavilion and Family pool areas, offering the ultimate choice in relaxation. For those seeking a more private experience, private lake view pools are available, where you can enjoy panoramic views of the geothermal steam gently unfurling across Sulphur Bay Wildlife Reserve.

Bathing is complemented by wellness activities such as yoga, meditation, art and sound healing, with activities easily tailored to cater to individual and group preferences. Enjoy the onsite café, 88RA, for beautifully prepared breakfasts, lunches, platters, and a-la-carte menu choices, along with freshly made juices and smoothies, and arguably the best gelato in the country.



1000 Hinemoa Street, Rotorua
(07) 348 1328

info@polynesianspa.co.nz
polynesianspa.co.nz
polynesianspa
polynesianspa





SKYLINE ROTORUA - A RENOWNED DESTINATION

Cherished for its remarkable experiences, your journey begins with a serene Gondola ride up the majestic Mt Ngongotahā, granting you breathtaking views of the mesmerizing Lake Rotorua below.

Conveniently located just a 5-minute drive from central Rotorua, atop Mt Ngongotahā, Skyline Rotorua offers unrivaled views of this geothermal wonderland. Rain or shine, our attractions are suitable for all ages, ensuring a memorable adventure for the whole family.

The world-famous Rotorua Luge, a beloved attraction since its inception in 1985, awaits your arrival. Part go-cart, part toboggan, it lets you navigate through a lush forest on one of five thrilling tracks: Tiki Tour, Gravity, Legend, Ultra, and Twister. Offering a total of 7.3 kilometres of Luge tracks winding through the Redwood forest with breathtaking views of Lake Rotorua, these three-wheeled Luge carts are gravity-powered, with riders having full control over speed and direction using a unique braking and steering system. Suitable for all ages, even small children can join the fun with adults, and scenic chairlift rides will transport you effortlessly back to the mountaintop.

Choose the exhilarating Luge or, for the mountain biking enthusiasts, traverse the newly crafted park trails, each promising an adrenaline-packed journey through stunning landscapes.

But that's not all! Skyline Rotorua offers even more heart-pounding excitement with

the Zoom Zipline and the gravity-defying Sky Swing. Alternatively, immerse yourself in the natural wonders of the area by taking a leisurely stroll along our enchanting nature trails, complete with informative and interactive panels, providing insight into the local flora and fauna.

When hunger strikes, make your way to the Market Kitchen or indulge in an exquisite dining experience at the Stratosfare Restaurant & Bar. Don't forget to visit the Volcanic Hills Wine Tasting Room for a taste of New Zealand's finest wines while the kids explore the delightful Jelly Belly Gallery and Store.

Skyline Rotorua: Where unforgettable memories are created, and adventure is endless. Book your ticket to an extraordinary holiday today!



📍 178 Fairy Springs Road, Rotorua
☎ (07) 347 0027

✉ rotorua@skyline.co.nz
🌐 skyline.co.nz
📱 skylinerotoua
📷 skylinerotoua





**once is never
enough**



New Tracks Now Open!



Book online today

skyline.co.nz



AGRODOME

Situated in the heart of 350-acres of lush Ngongotahā farmland, 10 minutes from Rotorua, Agrodome has been connecting visitors to an authentic farm experience for over 50 years! Enjoy a fun-packed hour of entertainment and education, with the legendary Farm Show. Then climb aboard an all-weather, all-terrain vehicle to tour the farm.

Get offline, roll up your sleeves and let our informative team guide you through an experience like no other.

WORLD FAMOUS FARM SHOW

Begin your time at Agrodome with our world-famous Farm Show where you'll have the chance to get hands-on when you are invited to jump up on stage for the opportunity to feed a baby lamb or even hand-milk a cow! Learn about each of our 19 different breeds of sheep, witness a live sheep shearing demonstration, and make sure you put your hand up to bid in our fun sheep auction.

Possibly, the most anticipated part of the show is seeing our much loved, and remarkable farm dogs that will amaze you as they show off their skills and demonstrate their ability to respond to commands and keep those sheep (and ducks!) in line. It's fun, entertaining, and a great show for the whole family to enjoy. If you like seeing dogs at work, then you'll also enjoy the Agrodome dog trial where our four-legged friends round up some not so obliging sheep.

INTERACTIVE FARM TOUR

Next, begin your Farm Tour. Climb on board our custom tractor trailer for a 45-minute





informative, interactive tour of our 350-acre farm. You will have the opportunity to get up close to our Romney sheep and alpaca, you'll even get to hand-feed them! Remember to bring your camera on the tour so you can snap photos of all the animals typically farmed here in New Zealand, including our exotic cattle breeds, pigs, deer, Archie the Ostrich and of course Chocolate Thunder, our cheeky goat! To top it off the tour will also make a stop in our picturesque Kiwifruit orchard so you can try some locally produced honey.

HOME OF SHAUN THE SHEEP

Agrodome is New Zealand's home of Shaun the Sheep! So, look out for the big Shaun statue and some smaller Mossy Bottom friends scattered around the farm. You can grab a bean bag and have some chill time, watching episodes of Shaun the Sheep in the Dog and Whistle store. You might also be tempted to purchase some of the cute Shaun the Sheep merchandise on your way out!

Before you leave, make sure you have a cuddle with the baby farm animals in the Farmyard Nursery, home to the smallest and cutest animals at Agrodome. Enjoy a great day out for the whole family and experience a world of fun on the farm!



📍 141 Western Road, Ngongotahā,
Rotorua
☎ (07) 357 1050

✉ reservations@agrodome.co.nz
🌐 agrodome.co.nz
📱 [agrodomerotorua](https://www.facebook.com/agrodomerotorua)
📷 [agrodome](https://www.instagram.com/agrodome)



Agrodome
A world of fun on the farm



WAIMANGU VOLCANIC VALLEY

Pack up the family and experience an educational and unforgettable day exploring Waimangu Volcanic Valley – covered in regenerating native forest and fascinating flora, spectacular geothermal features and distinctive birdlife, Waimangu provides entertainment for the whole family.

RICH IN HISTORY

Waimangu's history and legacy lends itself to plenty of rich experiences and stories for the whole family. The area was created following the Mount Tarawera eruption in 1886 – which devastated the area and destroyed what was known as the 'Eighth Wonder of the World', the Pink and White Terraces.

HANDS-ON EXPLORING

Let the kids get hands-on exploring the valley including discovering the temperature of some of Waimangu's amazing geothermal features using one of the digital 'temperature gun' thermometers.

Other highlights include Frying Pan Lake – one of the world's largest hot water springs with a surface area of 3.8ha – and the picturesque Inferno Crater Lake which rises and falls as it heats and cools.

AUGMENTED REALITY

The wonders of Inferno Crater Lake's 38-day cycle can also be uncovered through Waimangu's augmented reality (AR) app.

The app brings to life many of the Valley's fascinating geological insights, like the now-extinct Waimangu Geyser, which regularly





erupted in the valley between 1900 and 1904 to heights of over 400m!

Enjoy a boat cruise on Lake Rotomahana – now covering the famous Pink and White Terraces – and let the wonders of AR technology restore the sights that once brought so many intrepid travellers to the shores of the lake, and spark kids' imaginations about the mystery of the terraces' fate.

Waimangu's AR app is free to download on Apple and Android devices. Locations of interest are geo-tagged, allowing visitors to enjoy the natural beauty of Waimangu until there is something hidden to be seen with AR.

LOCAL STORE & CAFÉ

If you're looking for a caffeine fix, look no further! The Waimangu Local Store and Café has the best coffee around and a lovely, relaxing environment with great views to enjoy it in! Choose from hot and cold breakfasts, hearty lunches, Kiwi classics and perfect picnic options if you are heading out into the valley.

Pick up some essential items from the general store while you are here or check out our range of specialty food and drink, gifts and clothing made in Rotorua and around New Zealand.

Open 8:30am. Last admission 3:30pm.



📍 587 Waimangu Road, Rotorua
☎ (07) 366 6137

✉ nature@waimangu.co.nz
🌐 waimangu.co.nz
📱 waimanguvolcanicvalley
📷 waimanguvolcanicvalley





TE PUIA

As the days get cooler and we see the seasons change, Whakarewarewa Geothermal Valley feels a bit different too. The steam is magical as Tamanuiterā (the sun) illuminates it and the heat from the Valley is like a warm hug. It's also a time where we acknowledge Matariki and bring back our renowned Sunday brunch offering.

MATARIKI HAUTAPU CEREMONY

The rising of the Matariki star cluster is a significant celestial event marking the beginning of the Māori New Year.

On Friday June 28th, Te Puia | New Zealand Māori Arts and Crafts Institute (NZMACI) will hold a traditional Hautapu ceremony from 4:30am – 6:30am led by NZMACI Pou Tāhu Te Waata Cribb and Te Rāngai Kawa – Te Tokotoru a Manawakotokoto. The ceremony showcases a deep respect for ancestral practices and the natural rhythms of te taiao (the natural world).

The three parts of the Matariki dawn ceremony, namely Te Tirohanga, Taki Mōteatea, and Te Whāngai i ngā whetū, symbolise a holistic approach to acknowledging the past, present, and future. Viewing the stars for forecasts, remembering loved ones, and making offerings to replenish the stars.

Discover Whāngai i te Hautapu, a cultural practice intertwining kai with celestial significance. Cooked in umu/hāngī, these offerings symbolise unity with nature. Join us to share in this interconnected tradition.





Furthermore, the act of gathering, sharing kai, singing waiata and telling stories fosters a sense of community and collective identity. It provides an opportunity for individuals to come together, reconnect with their heritage, and find solace in the company of others.

MATARIKI WHĀNAU FESTIVAL

Traditionally in Māori history, after a formal Hautapu ceremony everyone would gather to feast, play games, plan and prep for the year ahead. This is something we are introducing to our Te Puia Matariki festivities in 2024 on Rotowhio marae atea from 9am to 3pm.

The day will include:

- ❖ Scenic train rides through Whakarewarewa Valley to see the Pōhutu Geyser in action.
- ❖ Delicious kai relating to the whetū (stars) of Matariki.
- ❖ Get involved in Pā activities such as Tītī tōrea, rhythmic poi and haka lessons.
- ❖ Expand your knowledge with enlightening Matariki wānanga seminars with NZMACI Pou Tāhu Te Waata Cribb.
- ❖ See pohiri and cultural performances.
- ❖ Explore the Matariki taonga market with contemporary Māori artists

- ❖ See New Zealand Māori Arts and Crafts Institute wood carving, stone and bone carving and weaving.
- ❖ The kids can have fun on the bouncy castle or get kiri tuhi or moko face painting.

Secure your tickets now on Eventbrite.

SUNDAY BRUNCH AT PĀTAKA KAI

Sunday morning brunch is always a treat, so to make it remarkable, come and sit amidst the spectacle of an erupting geyser and enjoy our delectable delights...

From freshly baked breakfast pastries, to waffles and the allure of rewena fried bread paired with golden syrup and butter, the offerings at Pātaka Kai are a celebration of Aotearoa. Delight in the delicate flavours of manuka smoked king salmon, savour twice-cooked sticky glazed pork ribs, or enjoy buttermilk fried chicken. For those keen on breakfast classics, grilled maple bacon and eggs beckons, while creamy mushrooms seasoned with horopito add an indigenous herb twist.

You can secure your spot by booking in advance.



📍 Hemo Road, Rotorua
☎ (07) 348 9047 or 0800 TE PUIA

✉ reservations@tepuia.com
🌐 tepuia.com
📱 tepuia.rotorua.nz
📷 te_puia





REDWOODS TREEWALK & ALTITUDE

The heart of Rotorua is found in the Redwoods, where nature can be experienced in the daytime and magic comes to life at night. No visit to Rotorua is complete without experiencing the Redwoods. This is a Rotorua Must Do.

Here are three ways to enjoy the forest...

REDWOODS TREEWALK

Now synonymous with Rotorua, the Treewalk is not to be missed. The award-winning eco-tourism walk is 700-metres long, featuring 28 suspension bridges and viewing platforms.

Making its way through the canopy, Treewalk is the best way to forest bathe, and take in the 120-year-old Redwood grove where some of nature's magic happens... the trees here grow up to ten times faster than in other parts of the world, producing gentle giants that host unique fauna and flora.

Perfect for couples and families to take in Rotorua's most beloved treasure, where design meets nature.

REDWOODS NIGHTLIGHTS

Under the cover of darkness magic happens. New Zealand's most popular evening tour just got better, with the addition of the new Trubridge walk-in lantern. The thirty-four lanterns turn Rotorua's beloved Redwoods into New Zealand's real-life enchanted forest. Unique and intricate lighting brings the forest to life and makes a visit truly stunning no matter the weather.





Young and old fall under the spell of this amazing forest, that locals cherish as a place to renew, refresh, and recharge.

REDWOODS ALTITUDE

Experience even more of the spectacular Redwoods Forest!

Looking for something a little more exhilarating? Redwoods Altitude is a separate offering from the main Treewalk and offers a guided experience, up to 25 metres high – higher than the existing Treewalk.

When Treewalk enthusiasts said build higher, make it faster, Redwoods Altitude seemed to magically appear. This fully guided Indiana-Jones inspired journey takes visitors to the forefront of adventure. Small, guided tours are taken through a series of twenty-five themed swing bridges and three flying foxes, as they zip, jump, and balance their way through what might just be an impossible mission.

With daily scheduled departures, it is exactly what you'd expect the reboot of Treewalk as a movie to feel like. Allow 2.5 hours for this epic adventure, located only 5 minutes from

the Rotorua CBD, this thrill will not let you down. Book the ultimate tree top adventure in Rotorua today!

Check out our website for more info - www.treewalk.co.nz

Treewalk open daily from 9am.

Altitude departures daily.
Book your Altitude adventure at redwoodsaltitude.co.nz

(Closed Christmas Day)



📍 Titokorangi Drive, Whakarewarewa, Rotorua

✉ info@treewalk.co.nz
🌐 treewalk.co.nz
📱 [redwoodstreewalk](https://www.facebook.com/redwoodstreewalk)
📷 [treewalknz](https://www.instagram.com/treewalknz)





HELL'S GATE GEOTHERMAL RESERVE & MUD SPAS

As winter approaches and the temperature drops, mud boils and steam rises high over Hell's Gate. Experience a landscape that not only excites with its geothermal activity and native bush but also heals with its nutrient-rich mud and waters.

Nestled on the outskirts of Rotorua, lies the awe-inspiring geothermal landscape best known today as Hell's Gate.

Steeped in myth and legend, Hell's Gate has the power to excite. Walking through the geothermal reserve, it is hard to ignore the power of Rūaumoko (the god of volcanoes) as steam billows into the sky while mud boils and bubbles around you. Native flora, teeming with bird life, envelops tracks that open up into an array of different geothermal features around every corner. From mud volcanoes to sulphur crystals, you'll find it here.

Hell's Gate doesn't just entertain; it soothes, too. The area has long been known for its healing properties, treating tired bodies with its nutrient-rich mud and waters. While looking out over a truly unique landscape, sink into a sulphur spa to relax your body or bathe in the mud known worldwide to rejuvenate your skin, just as Māori warriors did nearly 1000 years ago.

WE'RE HEATING THINGS UP THIS WINTER

Indulge in the ultimate relaxation experience with our mud baths and sulphur spas as the sun goes down with the Hell's Gate Twilight Spa™ experience. Don't miss out on this limited-time opportunity! Visit our website for more details, as dates and times may vary.



📍 351 State Highway 30, Tikitere,
Rotorua
☎️ (07) 345 3151

✉️ info@hellsgate.co.nz
🌐 hellsgate.co.nz
📱 [hellsgaterotorua](https://www.facebook.com/hellsgaterotorua)
📷 [hellsgatenz](https://www.instagram.com/hellsgatenz)



HELL'S GATE



RELAX INTO A TWILIGHT SPA™

Rejuvenate your body and mind this winter by sinking into a Hell's Gate Twilight Spa™. Let nutrient-rich mud and water soothe your soul as the sun goes down over Rotorua.

For more info, visit www.hellsgate.co.nz

📍 351 State Highway 30, Tikitere, Rotorua
☎ (07) 345 3151 ✉ info@hellsgate.co.nz
📷 Follow us on Instagram @hellsgatenz



HELL'S GATE





WAI-O-TAPU THERMAL WONDERLAND

Explore spectacular nature and geothermal wonders at Wai-O-Tapu Thermal Wonderland, just a 20-minute drive south of Rotorua. Cashless site – all major credit cards and EFTPOS available.

EXPLORE YOUR OWN BACKYARD

Nestled in a natural bush setting and sculpted over thousands of years by volcanic activity, a series of defined tracks create a unique and wondrous experience.

“One of the 20 Most Surreal Places in the World” - Trip Advisor

Explore spectacular nature at New Zealand's most colourful natural volcanic park. Walks through this unique geothermal area take between 45 and 90 minutes and are great for all ages and abilities. These self-guided walks allow you to go at your own pace and are suitable for families. Discover a wide range of amazing photo opportunities and features including the world famous Champagne Pool, naturally coloured hot and cold springs, steaming ground, mud pools, expansive vistas, huge volcanic craters and the largest formation of sinter terraces in the Southern Hemisphere.

The Visitor Centre has a retail area to browse and a relaxing café to enjoy with the family. Our Sky Deck provides a great area to enjoy outdoor seating also. Picnic areas are available both inside and outside the park.

Families can enjoy the open spaces where our staff have created games for children to enjoy while you sip on our great barista made coffee.

LADY KNOX GEYSER PRESENTED DAILY AT 10.15AM

Set in its own amphitheatre, a short drive from the main park is the Lady Knox geyser which is presented daily at 10.15am.

This is an assisted eruption of a natural geyser and is carefully induced in an environmentally friendly manner. It is a unique opportunity to see a geyser in action and our knowledgeable guide will provide you with the story behind this unique feature.

OPEN DAILY

Wai-O-Tapu Thermal Wonderland is open 7 days including public holidays (closed Christmas Day) from 8.30am - 4.30pm. Last admission is 3pm.

Tickets to the geothermal park and Lady Knox geyser can be purchased online. Alternatively, ticket purchases are available at the visitor centre.

If you are attending the Lady Knox geyser show, it is advised to arrive by 9.45am.



📍 201 Waiotapu Loop Road, RD3,
Rotorua
☎ (07) 366 6333

✉ info@waiotapu.co.nz
🌐 waiotapu.co.nz
📱 [waiotapunz](https://www.facebook.com/waiotapunz)
📷 [waiotapu_wonderland_nz](https://www.instagram.com/waiotapu_wonderland_nz)





SECRET SPOT HOT TUBS ROTORUA

Soak in your own cedar hot tub of fresh spring water surrounded by native ferns. Situated beside the breathtaking Whakarewarewa Forest, Secret Spot Hot Tubs is the perfect place to reconnect with family, friends, and nature after your day's adventures.

You'll find a relaxed atmosphere and friendly welcome when you discover our secret spot in the forest. Secret Spot Hot Tubs, nestled in the heart of New Zealand's mountain biking mecca, has won the World's Best Forest Bathing Spa award for two years running.

Unwind in your own cedar hot tub beside a forest stream and enjoy tub-side bar service at the push of a button. Our fresh water comes from a beautiful aquifer spring, heated to just the right temperature for you to enjoy a relaxing 45-minute experience. For a refreshing twist, take a dip in our complimentary Brass Monkeys cold plunge tubs during your soak.

Explore our unique café and bar in a backyard setting – we have smooth manuka-roasted coffee, Good George craft beer and cider, and Mills Reef wine. Have a bite to eat at our BaseCamp street food kitchen, play lawn games and enjoy our outdoor campfires, or rest your legs in a Shiny Dip foot hot tub, free with any drinks purchase.

With free live music on the weekends and a magical atmosphere at night, Secret Spot Hot Tubs is a must-do Rotorua activity.



📍 13/33 Waipa State Mill Road, Rotorua
☎ (07) 348 4442

✉ info@secretspot.nz
🌐 secretspot.nz
📱 secretspothottubs
📷 secretspotrotorua





WHAKAREWAREWA, THE LIVING MĀORI VILLAGE

Home to two Māori subtribes for over 130 years, Whakarewarewa is an intimate and authentic Māori experience, set on a geothermal plateau offering day time experiences. One of New Zealand's most iconic destinations, Whakarewarewa will create memories of a lifetime for all ages.

Set in a geothermal wonderland, Whakarewarewa residents have been sharing their lifestyle with visitors for generations.

WHAKAREWAREWA LEGACY GUIDED VILLAGE TOUR

Experience an iconic guided tour of our village with a local, learning Māori culture, history and traditions that have been passed down through generations - including a chance to experience the unique taste of a corn cob cooked in our largest hotpool. Get close to the best of Rotorua's geothermal treasures, including Pōhutu, the largest geyser in the Southern Hemisphere.

WHAKA GEOTHERMAL TRAILS

Enjoy untouched landscapes on our self-guided geothermal trails experiencing the raw nature of Papatuanuku (Mother Earth). These Jurassic park-like trails are described as providing regenerative powers as you find yourself face-to-face with hot-spring lakes, unique flora and fauna, as well as views of our home from various lookouts. To take your exploration to the next level, we have an exclusive e-bike hire and trails experience into previously non-accessible areas of the reserve. This is an ideal outdoor adventure for families, couples and small groups of up to 10 people.

CULTURAL PERFORMANCES

Enhance your visit with a cultural performance. Sit back and relax to the melodious sounds of our local Kapa Haka group as they serenade you with song and dance that pertain to our people. Be in awe by the fierce 'Haka' as performed by the New Zealand All Blacks, or the love story to of our ancestors Hinemoa and Tutanekai.

Open daily, 9.00am - 4.00pm. Closed on Christmas Eve and Christmas Day.



📍 17 Tryon Street, Whakarewarewa,
Rotorua
☎ (07) 349 3463

✉ bookings@whakarewarewa.com
🌐 whakarewarewa.com
📱 [whakarewarewarotorua](https://www.facebook.com/whakarewarewarotorua)
📷 [whakarewarewa](https://www.instagram.com/whakarewarewa)





EXPERIENCE THE KAITIAKI DIFFERENCE

Kaitiaki Adventures offers superior and unforgettable white-water rafting, sledging and hiking experiences. We give our clients an initiation into aspects of Māori culture through myth and legends and karakia (Māori prayer) all whilst experiencing the ultimate adrenaline rush. World class half day experiences.

RAFT THE KAITUNA RIVER WITH OUR WORLD CLASS GUIDES

Snake through steep bush clad canyons and over 14 awesome drops including the highest commercially rafted waterfall in the world: The seven metre high Tutea Falls. Blended with a touch of Māori culture, this trip offers it all, for both white-water rafting enthusiasts and first timers. Grade 5.

KAITIAKI ADVENTURES ARE NEW ZEALAND'S ORIGINAL WHITE-WATER SLEDGING SPECIALISTS

There is something for everyone on this beautiful scenic excursion. Play holes and awesome rapids to negotiate your way through as you are in charge of your own vessel. Take the river on at eye level and propel yourself through the water by the flippers on your feet. Our qualified guides are there to encourage, motivate and help you where necessary.

NEW ZEALAND'S ONLY MT TARAWERA VOLCANIC CRATER WALK

Experience the majesty of Mt Tarawera. Infamous for its eruption on June 10th, 1886, Mt Tarawera created the world's youngest geothermal valley of Waimangu, at the same

time destroying the legendary Pink and White Terraces. This fully guided walking experience encompasses the unique landscape and history of the area.

Beginning with an off-road 4x4 journey through native New Zealand bush, transporting you to the craters edge. With unmatched scenic vistas and 360 panoramic views this experience is ideal for all ages and includes an optional run in to the heart of the volcanic crater.

No previous experience is required on any of the excursions we provide. Kaitiaki Adventures will give you all the training and safety equipment of the highest standard to make it a safe yet unforgettable journey.

Our world class guides are all NZQA qualified, and our business is Qualmark GOLD endorsed and a Maritime Safety certified operation.



📍 1135 Te Ngae Road, Tikitere,
Rotorua
☎ 0800 338 736 / (07) 350 1151

✉ bookings@kaitiaki.co.nz
🌐 kaitiaki.co.nz
📱 kaitiakiadventuresaotearoa
📷 kaitiakiadventures





TE PĀ TŪ

Feast on song, drama, tradition, and divine seasonal kai (cuisine) within our forest Pā (village) blanketed by towering Tawa trees, its blazing bonfires, and forest-formed amphitheatre. Te Pā Tū offers 3.5-hour evening events that change with each season of the maramataka, the Māori lunar calendar.

Across summer, Tū Te Rā celebrates an abundant harvest, and we explore concepts, rituals, and stories of ancient Māori warfare and peace.

Throughout winter, Tū Te Ihi marks promise heralded by the arrival of the Matariki star cluster which high and bright in winter skies, signalling the new lunar year – we share the energy and passion of this celebration.

Cultural knowledge unique to each season is shared from the outset – rituals, songs, stories and continue across the night. From the beginning too, we share local, seasonal kai (food) – plentiful and delicious. Kai horotai (indigenous canapes) is followed by a torch lit walk to a lavish 3-course fusion feast.

Our world famous traditional hāngi shares the table with other seasonal delicacies. Meats, foraged plants, seafood, local produce are prepared in a fusion of cooking techniques, Māori and global. All our kai draws purpose and inspiration from Māori flavours, healing properties, history, heroes.

Te Pā Tū events include transport to/from our Gathering Place located in the central city, 1220 Hinemaru Street.



1220 Hinemaru Street, Rotorua
(07) 349 2999

bookings@maoriculture.co.nz
te-pa-tu.com
tepatu
tepaturotorua





PARADISE VALLEY SPRINGS WILDLIFE PARK

Interact closely with a range of New Zealand's wild animals, native birds, farm animals and trout, and get up close to a large pride of African lions.

DON'T JUST LOOK, GET HANDS ON

Animals that are found wild around the country such as deer, goats, tahr and wallabies, as well as a range of sociable farm animals like alpacas, miniature horses and sheep can all be hand-fed throughout the day.

UP CLOSE WITH THE NATIVE BIRDS

Visit the kea, New Zealand's infamous and comical parrot in their walk-through aviary and see kakariki and kereru birds. Stroll through our waterbird wetland for great views of native and introduced waterfowl, and look out for the different native birds living wild around the park.

CASCADING WATERWAYS

Fern edged pools show off hundreds of rainbow and brown trout. Feed the wild trout in the natural stream and get eye to eye at the underwater viewing window. Look out for large native long-finned eels lazing in their ponds.

NATURE AT ITS BEST

Pathways through native trees lead to our freshwater spring where you can drink straight from the source, then purchase some of our own bottled 'Paradise Pure' to take away with you. Take our elevated treetops walk in a

tranquil and secluded area of the park, putting you up near the canopy of the trees.

THE PRIDE OF PARADISE

There is also a pride of African lions that can be seen all day in an enclosure that allows visitors to get very close to these wild animals. The afternoon feeding show at 2.30pm is a great time to see the lions active and to learn a bit more about the pride.

Paradise Valley Springs is open every day of the year from 8am to dark, with last entry at 5pm. Lion feeding is at 2.30pm and kea and possum feeding is at 3pm everyday.



📍 467 Paradise Valley Road, Rotorua
☎ (07) 348 9667

✉ info@paradisev.co.nz
🌐 paradisevalleysprings.co.nz
📱 paradisevalleysprings
📷 paradisevalleysprings





ADVENTURE PLAYGROUND ROTORUA

Imagine being able to travel over 750 acres of native bush taking in the spectacular views over Lake Rotorua and beyond.

Imagine being able to travel over 750 acres of native bush taking in the spectacular views over Lake Rotorua and beyond. Our Rotorua Adventure Playground trails are made from old forestry tracks dating back to the 1930s. Winding between totara, rewarewa and tawa trees, the native trees cast long shadows all along the trails. You can either drive one of our 4x4 self-drive buggies or take a four-wheel drive buggy tour driven by one of our professional guides.

Or maybe a relaxing horse trek to the lookout looking out over beautiful Lake Rotorua. Our horse treks have been designed to accommodate riders of all ages.

Adventure Playground Rotorua continues to expand our activities to meet our visitors' needs. This includes additions to our Clay Shooting facilities which now includes our 3 stand range, the 5 stand range & the Hi Pheasant field with 5 platforms in the valley. This allows the hosting of very large groups at our shooting facilities. We also offer specialised coaching clinics for shooters wanting to hone their skills.

We recently created a sporting complex next to reception. This facility is housed in a dedicated building in the natural wetlands.

The complex has 4 lanes of Archery on 1 side and 4 lanes of Airsoft or Paintball Target shooting. The complex is enclosed for all weather fun.

WHAT'S NEW AT ADVENTURE PLAYGROUND ROTORUA

We have completed development of our first Eco Adventure offering.

Come try our UBCO 2WD Electric Farm bike tours which follow our Horse track to the lookout, overlooking beautiful Lake Rotorua. Our guides will provide instruction on how the bikes work and then guide you to our amazing views. We can take some pictures for you to remember these magnificent views and your time with us.

All activities are live on our website with availability and times. Book online to ensure you get a spot. We look forward to seeing you.

Our activities are available in all weather. We love what we do, and we know you will too...



📍 451 Ngongotahā Road, Rotorua
☎ 0800 782 396

✉ info@adventureplayground.co.nz
🌐 adventureplayground.co.nz
📱 [adventureplaygroundnz](https://www.facebook.com/adventureplaygroundnz)
📷 [adventureplaygroundrotorua](https://www.instagram.com/adventureplaygroundrotorua)



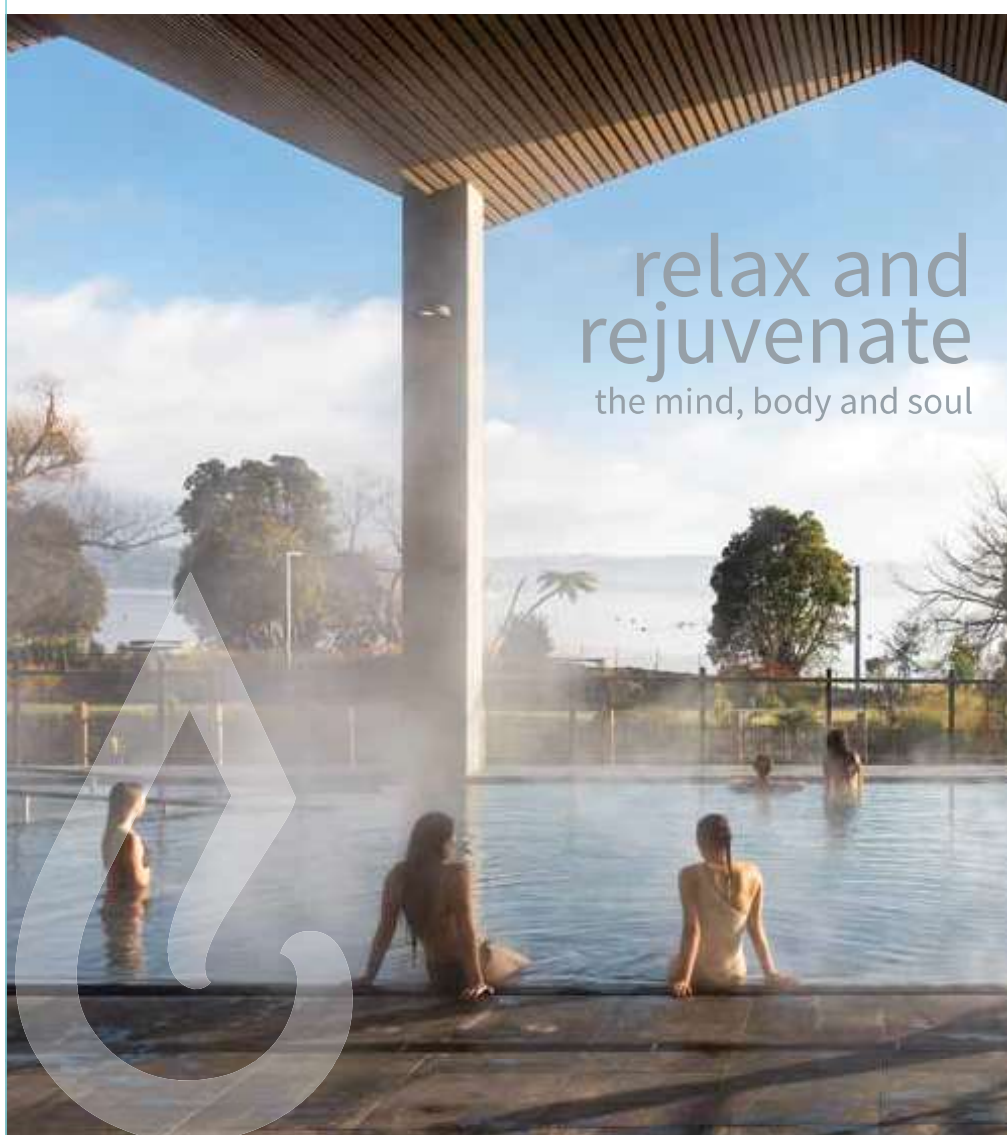


WAI ARIKI

HOT SPRINGS AND SPA

We invite you to experience... Wai Whakaora Restorative Journey

Unique in the world - this luxury 2 hour cultural wellness journey combines the healing powers of geothermal heat, water, mud and steam.



Give the gift of a Restorative Journey and/or to redeem your
WAI ARIKI SPECIAL OFFER use this promo code: **RMWINTER24**

07 349 7111

info@waiariki.co.nz

www.wai-ariki.co.nz

 [wai_ariki_spa](https://www.instagram.com/wai_ariki_spa)



MOUNTAIN JADE

Step inside our studio for an exclusive, behind-the-scenes experience. This is your chance to meet local Rotorua artists, see a live jade carving demonstration, and choose your very own piece of pounamu to treasure forever.



In the heart of Rotorua's city centre, just a short walk from the must-see Government Gardens, our artists are absorbed in their craft, passionately hand-carving New Zealand pounamu with love and dedication.

They invite you to come and discover the stories behind their carvings on a behind-the-scenes tour of our jade carving studio.



You'll get up close to the action and spend unforgettable one-on-one time with our artists, learning about the jade carving process and watching live carving demonstrations. As you embark on a journey into the history of New Zealand pounamu, you'll discover fascinating insights into the stone's cultural significance and the values it represents.



You will even have a chance to try your hand at traditional jade carving techniques and choose your very own piece of pounamu, which we will show you how to string into a necklace to take home and treasure forever.

Tours depart daily, and bookings are essential.

📍 1288 Fenton Street, Rotorua
☎ (07) 349 1828

✉ rotorua@mountainjade.co.nz
🌐 mountainjade.co.nz



LAKEVIEW GOLF AND COUNTRY CLUB

Come and enjoy a unique 18 hole par 71 golfing paradise with stunning views where everyone is welcome.



The golf course has undulating fairways and challenging greens with stunning views overlooking Lake Rotorua and Mokoia Island. Hazards include bunkers and bush clad gorges. As you play your round of golf you will enjoy the spectacular vistas across Lake Rotorua of Mount Tarawera and Mount Ngongotahā which stand proudly steeped in local history in the Rotorua landscape.



The peace and tranquility of Lakeview and the sounds and antics of native birds such as the tui, bellbird, fantail and kereru will add to this unique golfing experience.

The club has a fully stocked pro shop and covered driving range for all your golfing needs. Clubs, trundlers and electric carts are available for hire.



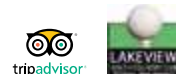
Come and check out our new clubhouse! Great option for a function venue, with a meeting room also available for hire. Catering and bar facilities available.

Mention this ad and receive 10% off your green fees.

Expiry date: 30 September 2024

📍 704 State Highway 5, Tarukenga, Rotorua
☎ (07) 357 2341

✉ info@lakeviewgolf.co.nz
🌐 lakeviewgolf.co.nz





Discover the world's leading kiwi hatchery.



The National Kiwi Hatchery Aotearoa is proudly the world's largest and most successful, having hatched over 2,500 kiwi chicks.

100% of your ticket contribution directly supports the program. Help us hatch more kiwi.

The
National
Kiwi Hatchery
Aotearoa



Now onsite at Agrodome
141 Western Road, Ngongotahā, Rotorua
nationalkiwihatchery.org.nz

ZORB ROTORUA - SLIDE WHILE YOU RIDE!

Superman dive into a giant inflatable ball with water and roll down Mt Ngongotahā with ZORB, where the fun will have you laughing uncontrollably. ZORB Rotorua is proudly owned and operated by the inventors of this iconic New Zealand bucket list adventure activity.

Discover FOUR different ball rolling tracks – the world's longest zig-zag Sidewinder Track, the smooth 'n' fast double Straight Track, MEGA Track – the longest, steepest & fastest track in all the land, and our newest track Pipeline, with a treeline tunnel and a sweeping half-pipe finish.

ZORB is the perfect opportunity to let your inner child come out to play. Think of it like a giant water slide, 40 litres of (warm) water, slipping and sliding – with no tumbling involved.

Don't let the cold weather rain on your parade. We've got three hot tubs to keep you toasty in between your rides, heated changing room with hairdryers, and even blankets!



📍 525 Ngongotahā Road, Rotorua
☎ (07) 343 7676 or 0800 646 768

✉ info@zorb.com
🌐 zorb.com





OFF ROAD NZ - DRIVEN BY ADVENTURE!

Creating fun memories and lasting impressions with unforgettable adrenaline fuelled adventures, since 1992 Off Road NZ is where you go to push the limits and have the best fun you can have off-road.



Encounter all terrain, action packed, premium adventure experiences while surrounded by nature. Perfect for families, friends and groups, come rain or shine! From 9am daily.

4WD BUSH SAFARI

Get behind the wheel, rugged and remote, the trail is full of unknowns with plenty of thrills along the way.



RACELINE KARTING

Exhilarating, sensational Karting fun on our 1.2km outdoor race circuit, reach speeds close to 100 km/hour on the 150 metre straight.

MONSTER 4X4 THRILL RIDE

Brace yourself for the power and brute force of an all-terrain experience. No roof, no doors



there is nothing between you and the great outdoors.

CLAYBIRD SHOOTING

Test your skills and accuracy! With real shotguns and live ammunition it's not as easy as it looks!

You drive, you hang on, and you race!

📍 193 Amore Road, RD2, Rotorua
☎ (07) 332 5748

✉ drive@offroadnz.co.nz
🌐 offroadnz.co.nz



AMAZEME ROTORUA

“Have fun – get lost!”.

aMAZE is a family-owned and operated business, centred around ‘old-school’ fun and affordable family entertainment. A perfect choice for families, parties, functions, corporate events, and school groups.

Set in the idyllic Paradise Valley, aMAZE has plenty to offer all ages, so why not bring a picnic and unleash your inner child?

The prime attraction is of course the 1.4km Hedge Maze, with an average completion time of 20 minutes (first to the middle wins!).

If losing yourself doesn't tempt you, we have a range of games that surely will, including tic-tac-toe, tug of war, stilts, sack races, swing ball, giant connect 4, giant snakes and ladders and giant checkers, plus more.

For those who like small animals, McGregor's Garden has a walk-in rabbit cage with rabbits who love cuddles!

Bring the family, friends and try it for yourself!

Open Thursday to Monday 10am – 4pm, and open every day during the school holidays.



📍 1335 Paradise Valley Road, Rotorua
☎ (07) 357 5759

✉ amazeme@xtra.co.nz
🌐 amazeme.co.nz





VELOCITY VALLEY



NEW ZEALAND'S
ADRENALINE PARK
FOR ALL AGES

SINGLE RIDES

SOLO PACKAGES

FAMILY PACKAGES

FREE PHONE 0800 949 888

E. reservations@velocityvalley.co.nz
1335 PARADISE VALLEY ROAD
ROTORUA, NZ

velocityvalley.co.nz



*Middle-earth™ is closer
than you think...*



In the heart of New Zealand, experience a slice of real Middle-earth™ and step into the lush pastures of the Shire™ with a guided tour of Hobbiton™ Movie Set, as featured in *The Lord of the Rings* and *The Hobbit* Trilogies. You will be taken around the 12-acre set; past Hobbit Holes™, through the authentic interiors of a Hobbit's home on Bagshot Row™, the Mill and into the world-famous Green Dragon Inn, where you will be presented with a complimentary, exclusive Hobbit™ Southfarthing™ beverage to conclude your adventure.

501 Buckland Road, Hinuera | 07 888 1505 | www.hobbitontours.com

HOBBITON™
• MOVIE SET •

SHIRE TOURS, SHIRE'S REST, MIDDLE-EARTH, GREEN DRAGON, HOBBITON, THE HOBBIT and THE LORD OF THE RINGS and the characters, places, items and events therein, are trademarks or registered trademarks of Middle-earth Enterprises, LLC and used under license by Rings Scenic Tours Limited and Wingnut Film Productions Limited, which are independently owned and operated. All rights reserved.



ROTORUA DUCK TOURS

Explore Rotorua's incredible lakes district on New Zealand's only WWII Landing Craft, 'The Duck'.
Experience the thrill of driving from land to lake without leaving your seat. Perfect for all ages.



On the guided tour you will experience the thrill of riding in an authentic WWII amphibious craft, affectionately known as a "duck", view spectacular natural landscapes and Rotorua's incredible lakes district. Splashdown on up to 4 lakes while being entertained and informed by our legendary guides who will bring Rotorua alive by retelling stories of the past, along



with providing information on Māori culture, geothermal wonders, historic sights, flora and fauna and much more. Learn about the Ducks' WWII history.

Two tour options available, the Rotorua City and Lakes Tour (90min) and the Tarawera and Lakes Eco-Tour (120min) running every day in all weather.



Our Tarawera & Lakes Eco-Tour is a more focused look at Rotorua's rich history and environment. Tours depart at regular intervals throughout the day and are perfect for both young and old.

📍 1241 Fenton Street, Rotorua
☎ (07) 345 6522

✉ info@ducktours.co.nz
🌐 rotoruaducktours.co.nz



3D TRICK ART GALLERY

Visual trickery at its finest when using your camera.

Art, not as you would expect it to be! A perfect place to get memorable photos for your family and friends.

Being the only 3D Trick Art Gallery in New Zealand you will not be disappointed with the 53 pieces of artwork that you will find yourself a part of.

Where else can you find yourself climbing mountains, riding Alpacas, standing stranded on an ice edge, trying to stop yourself becoming a crocodile's dinner then flying away in a hot air balloon, all in one day?

This indoor activity is great to visit in any weather, get out of the rain, or cool down on those hot days in our air-conditioned areas, the 3D Trick Art Gallery is the place to be.



📍 171 Fairy Springs Road, Rotorua
☎ (07) 349 0920

✉ info@3dtrickart.co.nz
🌐 3dtrickart.co.nz





TRY OUR KIWI EXPERIENCES



- LAND ON THE SUMMIT OF MT TARAWERA • FLOATPLANE LAKESIDE PICNIC GETAWAY
- TARAWERA FALLS VOLCANIC HELI HIKE • FLOATPLANE HIKES

Lakefront Drive, Rotorua City Lake Front, Rotorua NZ | 0800 800 848 | VOLCANICAIR.CO.NZ

**BOOK
NOW**

☎ 0800 538 7746 ✉ info@katoalakerotorua.co.nz
 🌐 www.katoajet.co.nz



MOUNTAIN BIKE ROTORUA

Based at world renown Whakarewarewa Forest Mountain Bike Park, Mountain Bike Rotorua are your one stop shop for rental, retail, servicing and mountain bike shuttles.



The Whakarewarewa Forest is considered one of the top riding destinations in the world. With over 200kms of purpose built mountain bike tracks and located only a short 10 minute drive from the city, it's no wonder why people travel from all over the world to ride in Rotorua.



We have two convenient locations for you to choose from. Our main shop at the Waipa carpark provides servicing, retail and over 100 bikes to rent, operating all year round. Our Tawa Shop provides basic servicing, retail sales and bike hire open weekends and holidays.



Our mountain bike shuttle service operates 7 days a week, all year round. The Main Hill public shuttle service starts 10am daily and our Tawa Shuttle operates weekends and holidays. We also have private 4wd bike shuttle charters available year round.

📍 1 Waipa State Mill Road, Rotorua
☎ (07) 348 4295

✉ ride@mtbrotorua.co.nz
🌐 mtbrotorua.co.nz





Waikite Valley

HOTPOOLS

Rotorua's Favourite Hotpools

100% pure natural geothermal water

Experience the 'Living Waters' of Te Manaroa Spring

- the largest single source of 100% pure boiling water in New Zealand.

Let all of your worries melt away as you take a dip in one of our many hot pools.

Opening Hours
10.30am – 8.00pm daily
(except for Christmas Day and Boxing Day)

📍 648 Waikite Valley Road, Rotorua
☎ (07) 333 1861
✉ info@hotpools.co.nz
🌐 hotpools.co.nz





Lady Janes Ice Cream Parlour


*fresher, brighter & yummiier than ever
treat yourself, you deserve it!*

- Over 50 flavours
- Sundaes
- Milkshakes
- Danish Waffle Cones
- Warm Desserts
- Smoothies
- Coffee

1092 Tutanekai Street
(Eat Street) | Rotorua

@ladyjanesicecream




**BURIED
VILLAGE**
of TE WAIROA


Where stories of the
**TARAWERA ERUPTION
COME TO LIFE**


Museum - Excavated sites
Waterfall Trail - Café

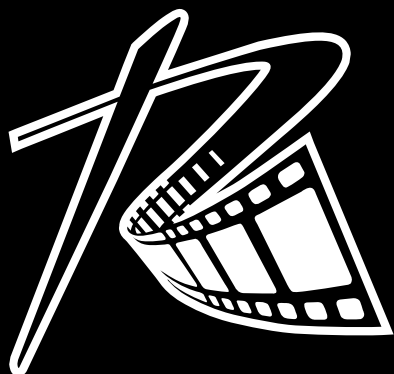


**Book Online
Today**

www.buriedvillage.co.nz
1180 Tarawera Road, Rotorua

 #BuriedVillage

 #BuriedVillage



**THE HOME OF
AMAZING
VALUE**

**ALL DAY
EVERY DAY**

WWW.READINGCINEMAS.CO.NZ

1281 ERUERA ST, **ROTORUA** 07 349 0061



MOTION ENTERTAINMENT

The number one entertainment mall in the country!
There is something for everyone with 10 attractions all under one roof!

Whether it's mini golf, a VR adventure, tenpin bowling, trampolining fun, Timezone arcade, a 4D Dark Ride or our brand new Ninja Park, we have something for everyone.

Be prepared to laugh and be thrilled with us!

Your adventure is up to you, try one attraction or try them all! Motion Entertainment is an all weather, action-packed 'must do' on your visit to Rotorua.

📍 366 Te Ngae Road, Lynmore Junction, Rotorua
☎ 0800 HAVE FUN (0800 4283 386)
✉ bookings@motionentertainment.co.nz
🌐 motionentertainment.co.nz



DRIFT KARTZ

Race on one of the slipperiest indoor go kart tracks in New Zealand. With the best price go karting in Rotorua.

Come and try our purpose-built indoor go-kart drift track. Perfect for all weather conditions. Our track has a special surface giving you one of the most difficult tracks you will encounter. Imagine trying to control an out-of-control race car! That's what DriftKartz is all about.

Come and try our 400cc kartz!

Great for:

- ❖ Families
- ❖ Team building and corporate events
- ❖ Sports teams and social clubs

📍 10 Old Taupō Road, Rotorua
☎ (07) 345 6211
✉ driftkartz@xtra.co.nz
🌐 driftkartz.co.nz





FOR A ONE OF A KIND EXPERIENCE



Come and browse our gorgeous range of high-quality, decorative and functional glass art.

We love to share the excitement of working with glass with visitors to our studio. Our workshops are a chance to experience glass-making firsthand and to keep a unique piece of glass art of your creation. *Make your booking today!*



AMOKURA GLASS

153 FAIRY SPRINGS ROAD, ROTORUA
(OPPOSITE THE LUGE)

www.amokuraglass.com



HORSE TREKKING LAKE OKAREKA

Horse rides through native bush, over green pastures and spectacular views of Lake and Mount Tarawera.

Rides to suit all abilities from beginners to experienced riders. Experienced riders are able to trot and canter. Daily departures at 10am, 1.30pm, and times to suit. Various trekking routes on offer, depending on trail conditions and rider experience. Trek through dense native bush, onto green

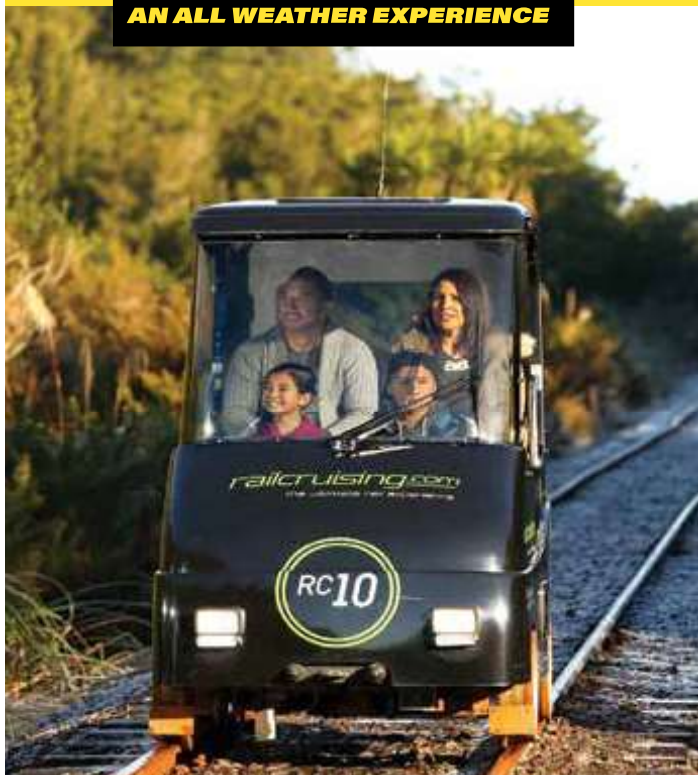
pastures, across sheep and cattle country, and to the top of the farm with views over Lake Rotorua, Lake Ōkāreka, Lake Tarawera, Lake Rotomahana, Lake Okataina, the Green Lake and Mount Tarawera. What a fantastic way to enjoy the fresh air and experience the region. Treks from 30 minutes to 2.5 hours.

51 Acacia Road, Lake Ōkāreka, Rotorua
(021) 292 2233
lucy@treklakeokareka.co.nz
treklakeokareka.co.nz



SELF-DRIVE RAIL CARS

AN ALL WEATHER EXPERIENCE



BOOK NOW
railcruising.com



ROTORUA GOLF CLUB

Visitors are always welcome. We cater to individuals, groups and corporate bookings.

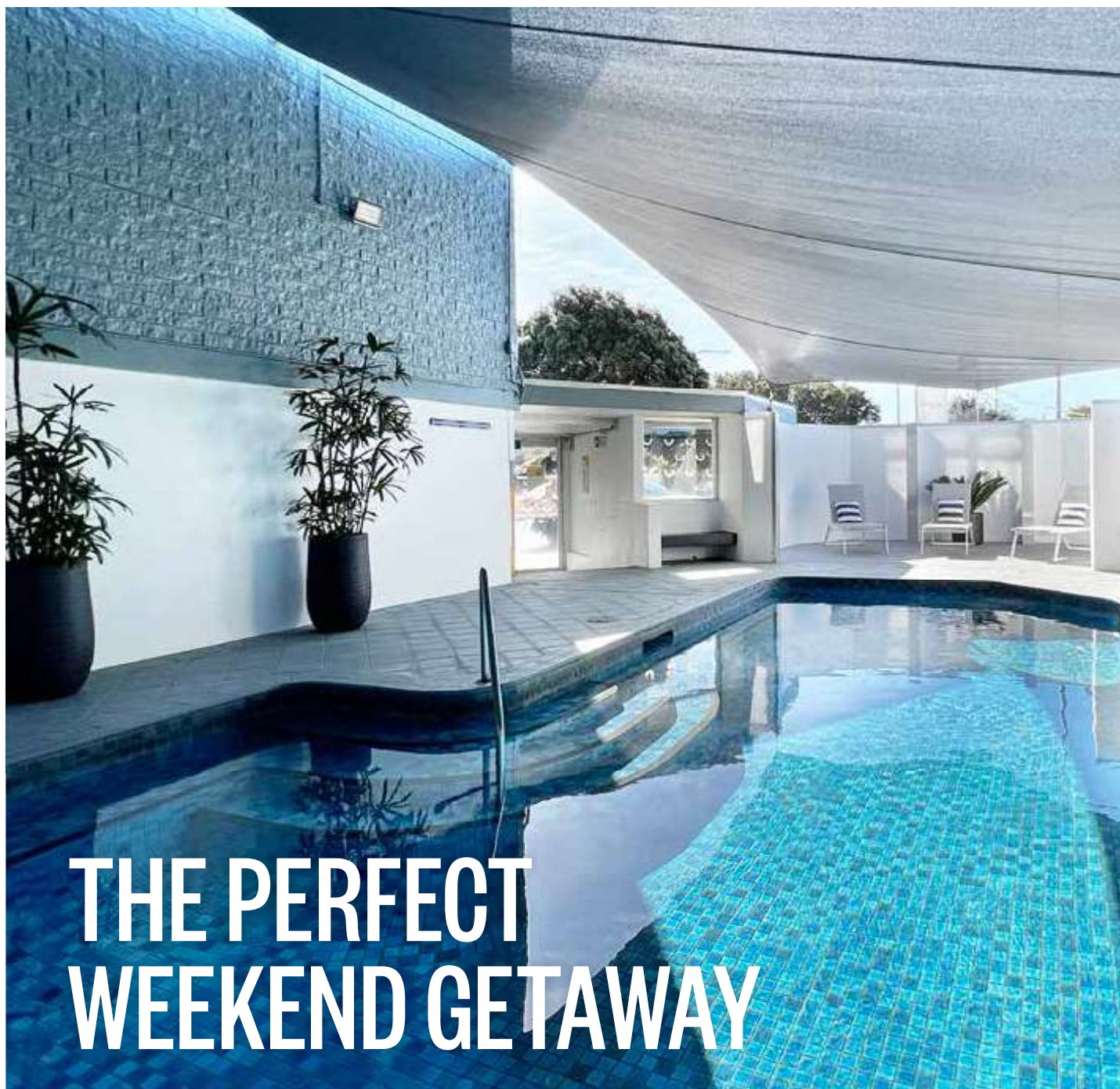
Rotorua Golf Club, a unique course situated on the Arikikapakapa Reserve (the place of hot splashing water) at the southern entrance to Rotorua, with its full 18 holes spread around both dormant and active geothermal areas.

Steaming hot pools, bubbling mud and ancient bunkers make up the unique golf hazards found at this stunning thermal course.

Golf Shop, electric carts, and our café/bar ensure players of all levels get to enjoy this once-in-a-lifetime experience.

399 Fenton Street, Rotorua
(07) 348 4051
golfshop@rotorugolfclub.nz
arikikapakapagolfrotorua.co.nz





THE PERFECT WEEKEND GETAWAY

SUDIMA ROTORUA

Sudima Rotorua sits on the shore of mystical Lake Rotorua with views across the water, and is just a short stroll from the vibrant town centre and Polynesian Spa. This well-appointed home-away-from-home has all the facilities and features you'd expect from a 4-star hotel, as well as a few that set it apart including a geothermally heated swimming pool and optional Māori cultural performance and hāngī buffet dinner. Sudima Rotorua's relaxed atmosphere and great value make it the perfect location to stay while exploring the world-renowned wonders of Rotorua.

1000 Eruera Street, Rotorua
sudimahotels.com

SUDIMA
 HOTELS



KOURA LODGE

Explore, relax and enjoy your journey. Koura Lodge is lake edge lodging at its best, offering boutique bed and breakfast lakeside accommodation in Rotorua, New Zealand.

Enjoying an unrivalled lakefront location, Koura Lodge is at the centre of it all. Just five minutes' drive to the city centre and even closer to many of Rotorua's world-famous attractions.

Offering only 10 exclusive guest rooms, all with private ensuites and lake views opening to hardwood verandas and 180-degree lake views rarely accessible to tourists.

Lodge rooms are perfect for a private getaway for couples and Lodge suites give a bit more space for those that need it or for a longer stay. A separate living room in the lodge suites lets you stretch just that bit further.

Perched at the top of the property sits our two-bedroom apartment overlooking the native gardens and out to lake Rotorua. The apartment is perfect for families with a full kitchen, living, dining and billiard table.

Spa, sauna and kayaks are all set out on the lakefront ready for you...



📍 209 Kawaha Point Road, Rotorua
☎ (07) 348 5868

✉ stay@kouralodge.co.nz
🌐 kouralodge.co.nz
📷 kouralodge





PRINCE'S GATE BOUTIQUE HOTEL

This 1897 heritage hotel is beautifully preserved and provides modern guest amenities while retaining its original charm and characteristics.



With a range of individually styled rooms, thermally heated pools and sauna, and Duke's Restaurant & Bar onsite, your stay at Prince's Gate Hotel will be one to remember. Situated at the entrance of the Government Gardens, the hotel is walking distance to the city centre, lakefront, Eat Street, and thermal pools, making it the ideal accommodation for any occasion.



The hotel has over 50 beautifully appointed, high-quality rooms in a variety of configurations including "the Duchess" honeymoon suite. Each room features complimentary Wi-Fi and is distinctive with its signature charm and individual classic style.

Relax and unwind surrounded by historic architectural beauty with the hotel's



renowned High Tea selections, local wine, or try a signature dish from the à la carte menu. Duke's serves breakfast, lunch, and dinner daily with group bookings welcome. On request, private dining rooms can be exclusively hired. The Prince's Gate Hotel has a long and fascinating history and is still a prominent showpiece in New Zealand's tourism capital, Rotorua.

📍 1057 Arawa Street, Rotorua
☎ (07) 348 1179

✉ info@princesgate.co.nz
🌐 princesgate.co.nz



HANA LODGE BOUTIQUE HOTEL

Discover serenity at Hana Lodge, nestled in the hills of Rotorua. Embrace tranquility in a lush 15-acre park just 15 minutes from the city centre. Unwind in a haven surrounded by nature, offering an idyllic escape for leisure and business travelers alike.



Escape to Hana Lodge, an enchanting retreat in Hamurana, Rotorua. Embraced by nature, our 15-acre park offers a peaceful sanctuary just a short drive from key attractions. Immerse yourself in Māori culture, explore geothermal parks, and indulge in adventure activities.

Whether you are here for business or leisure,



our complimentary Wi-Fi, tennis court, swimming pool, dual spa pools and sauna facilities are just a few of the many amenities that make your stay truly exceptional. Wander our grounds adorned with world-class sculptures and savour modern New Zealand cuisine in our lake-view restaurant.

Perfect for small meetings, weddings, or



corporate retreats, we tailor experiences for lasting memories. Experience boutique lakeside living with chocolates on arrival, adventure activities, and luxurious day spa options.

Book now and escape to the tranquility of Hana Lodge, where every moment is a celebration of nature and relaxation.

📍 415 Hamurana Road, Ngongotahā,
Rotorua
☎ (07) 332 2222

✉ info@hanalodge.co.nz
🌐 hanalodge.co.nz





BLACK SWAN LAKESIDE BOUTIQUE HOTEL

Escape to luxury at Black Swan Lakeside Hotel, perched on the shores of Lake Rotorua. With breathtaking panoramic views, eight stylish rooms, a fine-dining restaurant, and a secret grotto with dual spas, immerse yourself in lakeside elegance for a perfect getaway.



Nestled in Kawaha Point, Black Swan Lakeside Hotel offers unparalleled sophistication with panoramic views of Lake Rotorua.

Set in Victorian-style gardens, our boutique hotel features eight stylish rooms, gas fireplaces, and designer amenities.



Indulge in a fine-dining experience overlooking the lake, relax in the secret grotto with dual spas, enjoy a private jetty, and Tesla charging stations. Each room offers modern comforts like Wi-Fi, Smart TVs, Nespresso coffee makers, and complimentary breakfast. Explore nearby attractions, then return to unwind and savour local cuisine.



Host events with our versatile meeting space and catering options, or opt for exclusive venue hire. Immerse yourself in lakeside luxury at Black Swan Lakeside Hotel—where every moment is a celebration of impeccable comfort and breathtaking scenery.

Book your indulgent lakeside retreat today.

71 Kawaha Point Road, Rotorua
(07) 346 3602

info@blackswanhotel.co.nz
blackswanhotel.co.nz

BLACK SWAN
LAKESIDE BOUTIQUE HOTEL

REGENT OF ROTORUA

Escape ordinary. For that romantic retreat, or an adventure for the family, Regent of Rotorua is an urban oasis, a sanctuary in the city, offering a restorative, rejuvenating experience.



STAY

In luxury at The Regent - the epitome of chic accommodation in the city. Enjoy a stay in one of the 47 beautifully designed rooms, catering for the solo traveller through to families.



DINE

At the hip and stylish Regent Room Restaurant & Bar and indulge in a range of contemporary New Zealand cuisine. Offering breakfast, lunch, high tea, dinner; including a degustation menu and a plant-focused option, sharing plates and tapas to enjoy poolside or fireside.



UNWIND

In the thermally heated swimming pool, soak away any worries in our indoor mineral pool drawn from deep underground, relax after a day mountain biking and use our bike cleaning and secure storage areas.

1191 Pukaki Street, Rotorua
0508 734 368

info@regentrotorua.co.nz
regentrotorua.co.nz





JETPARK HOTEL ROTORUA

Nestled in the heart of Rotorua, JetPark Hotel offers the perfect base to retreat after a day of adventure. Immerse yourself in genuine Kiwi hospitality, while you explore everything this magnificent region of New Zealand has to offer.



REST

Unwind and recharge in JetPark's modern, spacious, and fully refurbished guest rooms during your stay. Offering family suites and pet-friendly accommodation, each room is equipped with free WiFi, Chromecast, a walk-in shower, all your essential amenities, and more.



RELAX

Kick back by the outdoor tepid pool, fire up the BBQ, horse around in the kids play area, or decompress in the spa. Whether for business or pleasure, slow down and relish your stay. JetPark has everything you need to make your time away truly unforgettable.



ENJOY

Fuel up for the day with a delicious continental breakfast and selection of coffees, teas, and fresh juices served every morning before you start your adventure.

📍 237 Fenton Street, Rotorua
☎ (07) 350 2211

✉ reservations@jetpark.co.nz
🌐 jetparkrotorua.co.nz



AURA ACCOMMODATION

Centrally located accommodation setting the benchmark in friendly personalised service and sustainable practices.



Located within a block of the newly redeveloped lakefront, Eat Street and Government Gardens, Aura has become the hub for those seeking to make the most of their time in Rotorua. Whether that be taking the local team's advice and exploring a wide range of sights or enjoying the extensive facilities at Aura.



Relax and laze about the property with the geothermally heated pool (30-38°C), private geothermal pools, free scooters, BBQ and steambox cooking facilities, Sky TV, and Netflix.



Come and experience this unique place putting people and the environment at the forefront with locally sourced condiments, on-site recycling, compost, and EV charging station.

Proud winners of the 2023 Tripadvisor Travellers Choice Award and Qualmark 4 Star Silver Award.

📍 1078 Whakaue Street, Rotorua
☎ 0800 333 799

✉ info@aurarotorua.co.nz
🌐 aurarotorua.co.nz





ROTORUA THERMAL HOLIDAY PARK

With more than 150km of purpose built mountain biking trails just a 5 to 10 minute bike ride from our park, you won't find a better location for your forest adventure.



Enjoy FREE hot pools, on-site bike wash and storage. Stay in our tent, campervan or caravan sites, dorm rooms, studios, authentic log cabins, ensuite log cabins, fully self-contained flats, or luxurious fully equipped and spacious motel units.



Our guests have access to our well maintained communal kitchen facilities, gas BBQs, bathrooms, laundry, TV rooms, swimming pool (seasonal), kids play area and kids mountain bike track. A visit to Rotorua is not complete without soaking in our free hot pools which are accessible to all guests.



All this surrounded by mature trees and gardens. Rotorua has become a mecca for mountain bikers, travelers and visitors from around the world.

📍 463 Old Taupō Road, Rotorua
☎ (07) 346 3140

✉ info@rotoruathermal.co.nz
🌐 rotoruathermal.co.nz



QUEST ROTORUA CENTRAL

Your home away from home - where comfort meets convenience in the heart of the city.

Located in the heart of Rotorua's CBD, Quest Rotorua Central blends comfort and convenience. Explore the city's rich history with a leisurely walk to the iconic Government Gardens, while the renowned Polynesian Spa and Rotorua's newest spa attraction, Wai Ariki, provide moments of relaxation and natural beauty. The proximity to the Events Centre and The Sir Howard Morrison Performing Arts Centre adds cultural flair within easy reach.

Catering to both the corporate traveller or leisure seeker, our studios and one-bedroom apartments offer comfortable living spaces, fully equipped kitchenettes, and laundries. Enjoy complimentary Wi-Fi and 43-inch televisions offering nearly 200 on-demand movies.

For an elevated experience, our executive apartments (adults only) feature a balcony

and a private outdoor hot tub.

Indulge in the local culinary scene, including the all-weather al fresco dining precinct, Eat Street. If you fancy a night in, ask about our shopping pantry service that delivers groceries straight to your door, allowing you to prepare a home-cooked meal in the comfort of your own apartment, with no fuss.



📍 1192 Hinemoa Street, Rotorua
☎ (07) 929 9808

✉ host@questrotoruacentral.co.nz
🌐 questrotoruacentral.co.nz





NEWINA ROTORUA

Executive accommodation and conference facilities.



Rotorua's newest accommodation complex opened in 2023.

Centrally located on the main arterial route from Auckland. A handy 5 minute walk to the famous Skyline gondola and luge park, and 3 minute drive to the city centre.

- ❖ 40 accommodation units ranging from executive king and twin queen rooms.



- ❖ Premium king and twin queen rooms with own private pool.
- ❖ Premium king and twin queen rooms with own private pool.
- ❖ Executive 1-bedroom and premium 1-bedroom suites with own private pool.



- ❖ Executive 2-bedroom family units and premium 2-bedroom suites with own private pool.
- ❖ Outdoor heated pool, gym, sauna, conference and restaurant. Free unlimited Wi-Fi.

3 Bidois Road, Rotorua
(07) 348 9276

admin@newina.co.nz
newina.co.nz



ROTORUA BLUE LAKE TOP 10 HOLIDAY PARK

The perfect destination for an escape, boasting stunning views of Lake Tikitapu.

We offer different accommodation styles to suit any sized group or budget from lake-view motels, to standard cabins and powered sites. In the perfect location to take advantage of Rotorua's 15 beautiful lakes. Just across the road from Lake Tikitapu and a short 5-minute drive to Lakes Ōkareka

and Tarawera. Close proximity to the city and attractions, come and enjoy water activities galore, Redwoods' walking and mountain bike trails, and explore surrounding native bush and walks around the lake.

723 Tarawera Road, Rotorua
0800 808 292
info@bluelaketop10.co.nz
rotorubluelaketop10.co.nz



VR ROTORUA LAKE RESORT

Set on 6 acres on the shores of the beautiful Lake Rotoiti.

Located just 15 minutes drive from central Rotorua, VR Rotorua Lake Resort features an outdoor pool, sauna, and tennis courts. Guests enjoy free unlimited Wi-Fi.

All rooms feature a private balcony or patio offering either stunning views over Okawa Bay

or the surrounding gardens. Each includes satellite TV, tea/coffee making facilities. The Grill Restaurant is open for breakfast, lunch and dinner and serves modern New Zealand cuisine.

For more information please visit vrrotorua.co.nz.

366 State Highway 33, Mourea, Rotorua
(07) 362 4599
rotorua.reservations@vrhotels.co.nz
vrrotorua.co.nz





PIG & WHISTLE HISTORIC PUB

Join us for Classic Pub Meals | 15 New Zealand Craft Beer & Ciders on Tap | Cocktail Menu
Happy Hour | Live Music - Saturdays | Function Room | Winter Quiz Nights - Thursdays



The Pig & Whistle Historic Pub provides a warm welcome in a landmark Rotorua building. Once serving as the Rotorua Police Station from the 1940s, it's steeped in local history and provides plenty of talking points for regulars and visitors.

Relax in one of our cosy booths or enjoy the open fire in the Garden Bar over the cooler



months, while enjoying your meal from our winter menu. New Zealand Lamb Shanks, Buttermilk Chicken Burger, Pork Spare Ribs, Slow Cooked Brisket, Harissa Chicken Salad, and our Pig Tail Fries are all customer favourites. The menu also offers a vast selection of vegetarian, gluten-free and vegan offerings to meet your nutritional needs.



Our drinks menu boasts 15 craft beer and ciders on tap, along with an extensive collection of New Zealand artisan gin, wine and cocktails.

Bookings via our website and walk-ins are welcome.

Open 11.30am till late, 7 days.

📍 1182 Tutanekai Street, Rotorua
☎ (07) 347 3025

✉ hello@pigandwhistle.co.nz
🌐 pigandwhistle.co.nz



CAPERS CAFÉ + STORE

Voted Rotorua's Best Eggs Benedict 2024

All Day Breakfast Menu | Lunch + Dinner Menu | Kids Menu | Salad Cabinet | Coffee + Cake | Daily Happy Hour



Capers Café + Store has been part of the Rotorua café scene for over 22 years, delivering delicious seasonal dishes made with fresh ingredients from local suppliers, reflecting our commitment to our community.

Choose from our All Day Breakfast Menu, featuring our award-winning Eggs Benedict made with local Otaika Valley free range eggs.



Cabinets filled with a selection of sandwiches, wraps, salads + sweet treats perfect to enjoy in the café or takeaway. While our Lunch + Dinner Menu is available daily from 10.30am till close with gluten free, vegetarian and vegan options available.



Our Organico New Zealand blend of Fairtrade organic coffee is served with your choice of plant-based milk or organic A2 milk from Volcanic Creamery. Join us for Happy Hour on selected beer, wine + Rotorua Distillery Gin, 4.00pm - 6.00pm, 7 days.

Open 7 days, 7.00am - 7.00pm.

📍 1181 Eruera Street, Rotorua
☎ (07) 348 8818

✉ hello@capers.co.nz
🌐 capers.co.nz





GOOD EASTERN TAPHOUSE

With a love of great food, great beer and a passion for the outdoors, the Good Eastern Taphouse was born. In the mountain biking mecca of NZ and just a short drive from some of the best lakes in the area.

Craving fresh, local flavours and good company? Head east to The Good Eastern Taphouse! We're your one-stop shop for delicious food, refreshing drinks, and good times.

Whether you're looking to refuel after conquering the Whakarewarewa Redwoods Forest (just a 5-minute walk away!), unwind with a cheeky wine night with friends, or enjoy a relaxed family meal, we've got you covered. Our menu boasts mouthwatering, made-from-scratch dishes and we proudly support local Rotorua businesses with our fresh ingredients.

Can't stay for a sit-down meal? No problem! We offer a wide selection of Good George beers, ciders, and cocktails on tap, along with bottles you can take away.

So come on down, bring your furry friend (our dog-friendly courtyard awaits!), and let the good times roll at The Good Eastern Taphouse!

good beer + good food + good friends

Book online at goodeastern.nz



📍 279 Te Ngae Road, Lynmore, Rotorua
☎ (07) 345 4476

✉ admin@goodeastern.nz
🌐 goodeastern.nz

GOOD EASTERN
TAPHOUSE

SOBAR & CAFÉ

Serving up delicious gourmet pub and street-style food with specials on a rotational basis, Sobar also boasts an extensive range of New Zealand wines and craft beers, as well as live music on Thursdays.

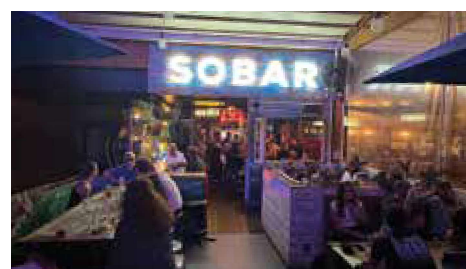
Experience the beating heart of Rotorua's nightlife at Sobar, nestled in the vibrant centre of Eat Street. A beloved community hub, Sobar is the ultimate weekend haven, adored by locals and recognised as the city's premier destination. Our dedicated team guarantees unforgettable experiences with every visit.

Delight in our delectable pub fare featuring mouthwatering burgers, gourmet hotdogs, and tempting tapas, perfect for satisfying every palate. Quench your thirst with our diverse selection of beers, available on tap, in stubbies, and cans, ensuring there's a drink for everyone.

Immerse yourself in live music every Thursday, creating the ideal atmosphere for relaxation and enjoyment. Dive into the weekend with our dynamic DJ nights on Fridays and Saturdays, igniting the dance floor and

keeping the festivities alive until dawn.

Whether you're craving delicious food, refreshing drinks, or vibrant entertainment, Sobar promises to elevate your Rotorua experience. Join us where every moment is a celebration, seven days a week.



📍 1104 Tutanekai Street, Rotorua
☎ (022) 327 7071

🌐 sobarrotorua.business.site
🌐 sobarrotorua

SOBAR



ATTICUS FINCH

Experience a fusion of elegance and creativity. Let our team transform your dining experience into an unforgettable occasion, where lively conversations, playful plates, and innovative libations converge to create cherished memories.

Step into the literary-inspired world of Atticus Finch, where contemporary New Zealand cuisine reigns supreme. Whether you're indulging in a casual café-style lunch or savouring shared plates for dinner, every moment promises an exquisite experience crafted to tantalise your taste buds.

Our ambiance seamlessly merges the charm of a speakeasy with the sophistication of a cosmopolitan bistro, offering a dining atmosphere unlike any other.

Each dish is a work of art, meticulously prepared from scratch with a dash of innovative flair, ensuring freshness and flavour in every bite. Embracing dietary diversity, our menu features a plethora of vegetarian, gluten-free, and dairy-free options to cater to every guest.

Sip on artisanal craft beers, relish wines by the glass, or indulge in handcrafted cocktails infused with our signature syrups and garden-fresh herbs.

Join us at Rotorua's premier dining destination, honoured with multiple awards including Best Ambience, Supremo, and Best Barista titles.



📍 1106 Tutanekai Street, Rotorua
☎ (07) 460 0400

✉ info@atticusfinch.co.nz
🌐 atticusfinch.co.nz

Atticus Finch
DRINK • DINE • SHARE



Rotorua's own winery

Enjoy a taste of Rotorua during your stay and beyond with Volcanic Hills Winery.

Made locally in Rotorua, using grapes from the best wine growing regions across New Zealand, ask for Volcanic Hills in restaurants and hotels around town, or you can buy online to enjoy at home.

Wine tasting and sales available at the Tasting Room at the top of the gondola at Skyline Rotorua.

VH
VOLCANIC HILLS WINERY

www.volcanichills.co.nz



RESTAURANT & BAR

STRATOSFARE

SKYLINE ROTORUA

Stratosfare Restaurant at Skyline Rotorua

Rotorua's Premium Dining Experience. Bookings essential.
Phone 07 347 0027 Email rotorua@skyline.co.nz



skyline.co.nz

WHITE TIGER
RESTAURANT & BAR

ALL YOU CAN EAT

1129 TUTANEKAI STREET, ROTORUA
WWW.THEWHITETIGER.CO.NZ

**Trust Rotorua isite
Visitor Information
Centres for all your
travel advice and
bookings**



i The best prices
for activities and
accommodation

i Quality
assurance on all
accommodation
we book

i Caring and
knowledgeable
local staff

i Three locations
to serve you

**See us for free, reliable, friendly and
expert advice and booking services
for all your activity, accommodation
and transport needs in Rotorua and
all of New Zealand.**



07 348 5179 | info@rotoruaNZ.com | rotoruanz.com
1167 Fenton Street | Redwoods Forest | Waipa MTB Hub



ROTORUA
rotoruanz.com



New Zealand Māori
Arts & Crafts Institute